

SMG200

**MOTOR
GRADER**

45,768 LBS OPERATING WEIGHT
253 HP NET HORSEPOWER
14 FT STANDARD MOLDBOARD LENGTH

SANY



POWER MEETS
**PERFECT
GRADE**

EASY TO OWN, OPERATE, & SERVICE

**INDUSTRY'S
STRONGEST
STANDARD
WARRANTY** | **3-YEAR***
3,000 HOURS

*Warranty applies to 2026 Crane, Telehandler, Grader and Roller models only.



MADE FOR AMERICAN OPERATORS

Across the United States, local townships, counties, and state municipalities rely on the SMG200 to maintain roads and ditches and keep their communities moving. Engineered for reliability and affordability, this motor grader combines premium components with a cost-effective design to deliver an exceptional return on investment. Every major system is selected for durability and job-ready performance, ensuring dependable operation when it matters most. Simple, user-friendly controls make the SMG200 easy to operate for users of all experience levels, reducing training time and maximizing productivity.



JOYSTICK CONTROL WITH STEERING WHEEL

The SMG200 features easy-to-use electronic hydraulic joysticks that place all primary machine functions at the operator's fingertips. A traditional steering wheel is also provided, ensuring operator comfort and confidence during high-speed applications.



LOW MAINTENANCE CIRCLE BEARING

The SMG200 comes standard with SANY's industry-leading low-maintenance circle bearing, designed to keep critical components tight with little to no maintenance required. This durable design enhances overall efficiency, maximizes uptime, and improves operator control throughout the life of the machine.



COMPONENTS YOU TRUST

All SANY motor graders are built with components by brands you know and trust. From Cummins to Kawasaki to Parker, you're getting a machine made with familiar, proven, reliable systems that offer ample support. It's an ecosystem of dependable components that make ownership easier.



FORCES TO BE RECKONED WITH

As one of the largest machines in its class, the SMG200 delivers industry-leading downforce and drawbar power to overcome hard-packed road surfaces with ease. Its substantial weight and robust powertrain work together to provide superior cutting performance, allowing operators to tackle demanding conditions and stubborn obstacles with confidence.



FACTORY INSTALLED STANDARD ATTACHMENTS

The SMG200 comes standard with factory-installed features including a rear scarifier, push block, work lights, heated mirrors, and front auxiliary hydraulics—ensuring the machine is fully equipped and job-ready without added expense to the customer.

ADDITIONAL OPERATIONAL SELECTION FEATURES

Operator can select speed of blade lift and steering circuit.



A MACHINE THAT'S EASY TO OWN

The SMG200 is trusted by townships, counties, and state municipalities across the U.S. to keep roads and ditches in top condition. Engineered for reliability and value, it combines premium components with a cost-effective design for exceptional return on investment. As one of the largest machines in its class, the SMG200 delivers industry-leading downforce and drawbar power, with the weight and strength to tackle hard-packed surfaces and tough obstacles with ease. Factory-installed features—including a rear scarifier, push block, work lights, heated mirrors, and front auxiliary hydraulics—make it job-ready right from the start. Low-maintenance SANY circle bearings keep critical components tight, maximizing uptime, efficiency, and operator control. With intuitive electronic hydraulic joysticks and a traditional steering wheel, operators enjoy comfort, precision, and full control, even during high-speed operations. The SMG200 is built to perform, day in and day out.

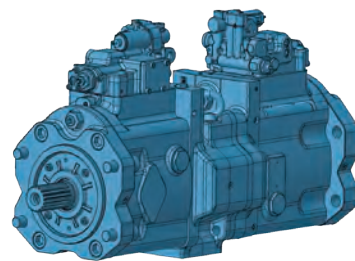
RELIABLE FROM THE INSIDE OUT

Working long hours, protecting your crew and keeping revenue flowing, the SMG200 is built to be truly reliable—engineered to withstand thousands of hours in the toughest conditions. Its structural design handles the stress of constant blading and ditch work, while the hydraulic system delivers consistent power, force and pressure. The powertrain runs at thousands of RPM all day long to keep the hydraulic pumps working without a break. Every design choice is made to minimize downtime and maximize productivity. That's why it's backed by a 3-year / 3,000-hour standard warranty—delivering reliability that doesn't compromise your schedule.



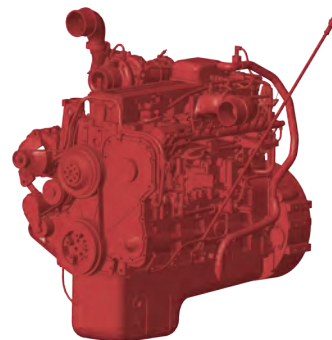
STRUCTURAL INTEGRITY

SANY machines don't cut corners on steel. We build each machine with the material it needs to deliver strength, stability and durability. Reinforced frames and Drawbar with large cross sectional stiffness are built to take a beating on the toughest terrain. In our state-of-the-art factories, robotic welding and CNC cutting ensure every part fits properly and is welded to last. Strict quality control then confirms the structural integrity meets our standards before it ever reaches your jobsite.



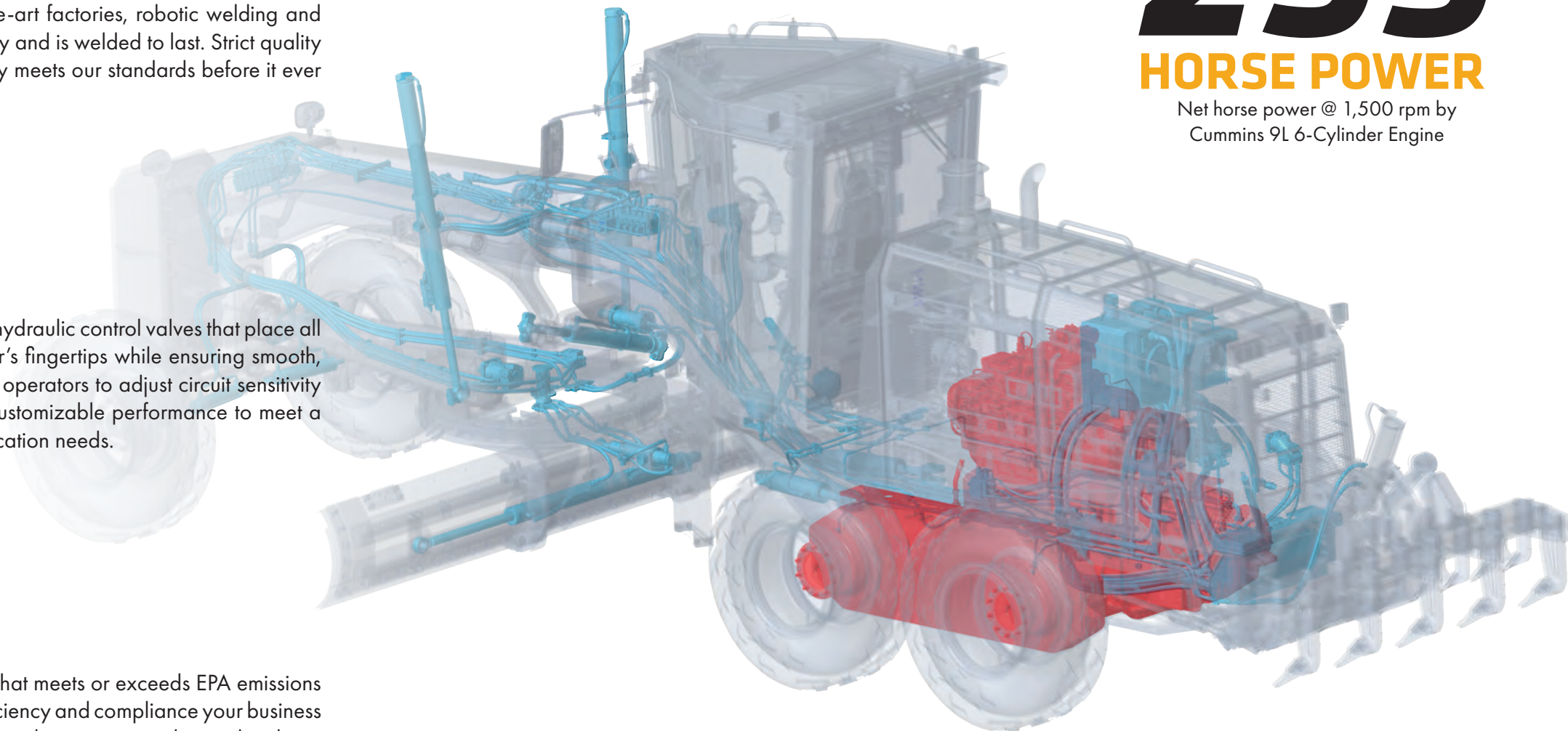
HYDRAULIC SYSTEM

The SMG200 is equipped with electronic hydraulic control valves that place all primary machine functions at the operator's fingertips while ensuring smooth, precise operation. The system also allows operators to adjust circuit sensitivity directly from the cab display, providing customizable performance to meet a variety of operator preferences and application needs.



POWERTRAIN BY CUMMINS

Powered by a Cummins 9L diesel engine that meets or exceeds EPA emissions regulations, the SMG200 provides the efficiency and compliance your business needs. With 253 hp, it delivers the power and torque to run day and night on the most demanding jobsites. It's a powertrain you already know and trust—backed by a major support network—where parts, service and expertise are always within reach. That means more uptime, less worry and a machine that works as hard as you do.



253

HORSE POWER

Net horse power @ 1,500 rpm by
Cummins 9L 6-Cylinder Engine



17+
FEATURES
specifically designed for operator
and jobsite safety.

SMG200

MOTOR GRADER **45,768 LBS** OPERATING WEIGHT
253 HP NET HORSEPOWER
14 FT STANDARD MOLDBOARD LENGTH



TECHNICAL SPECIFICATIONS

ENGINE

Engine Model	Cummins QSL9
Engine Net Power	253 hp
Displacement	8.9 L
Turbo Charged with Intercooler	Yes

OPERATING

Frame Type	Articulated
Moldboard	14'
Moldboard-Cutting Depth	28.15"
Moldboard Height	24.41"
Moldboard-Lift Above Ground	18.9"
Moldboard-Pitch	40° forward and 5° rear
Side Shift Left	86"
SidShift Right	90"
Frame Articulation	22°
Front Wheel Lean	17°
Axle Oscillation	16°
Turning Radius-Minimum	295.28"
Transport Width	107.28"
Fuel Tank	89.82 gal
Telematics Available	Yes



SAFETY PRIORITIZED

We design for safety first. Operators get secure handrails, steps, and antislip on top, OEM FOPS cab guarding, and a ROPS-verified cab with multiple exit points. A three-inch seatbelt, emergency shut-off and fire extinguisher add protection inside, while cameras, alarms, and 360° lighting enhance awareness for a safer jobsite.

SANY America Inc. reserves the right to change these specifications at any time without prior notification. ©2026 SANY America Inc. HEXPS26SMG200GEN2001

SMG200

MOTOR GRADER **45,768 LBS** OPERATING WEIGHT
253 HP NET HORSEPOWER
14 FT STANDARD MOLDBOARD LENGTH

STANDARD FEATURES

ENGINE

QSL 9 Cummins
 U.S. EPA Teir 4 Final/EU Stang V emission standards
 Dual-element, dry air filter with pre-cleaner
 Batteries 24 volt (2-12 volt)
 Air-to-air after cooler (ATAAC)
 Belt, serpentine, with tensioner
 Coolant expansion tank
 Electronic engine control
 Enclosed fan guard
 Engine coolant to -37 deg. C (-34 deg. F)
 Diesel exhaust fluid tank 18.92 L (5 gal)
 Fuel tank, 330 L, (89 gal) ground level fill and sediment drain
 Fuel filter with water separator
 Remote engine oil drain with ecology drain
 Full-flow oil filter
 Fuel priming pump
 Turbocharger
 Engine air precleaner
 Sever-duty fuel filter

POWERTRAIN

SANY Power shift transmission
 Manual differential lock
 Spring-applied, hydraulically reeased parking brake
 Wet-multiple disc brakes
 8 forward gears -6 reverse gears
 Tires size 17.5 R25
 Secondary steering
 Rear Axle Modular
 Sealed and lubricated tandem chains

OTHER STANDARD EQUIPMENT ITEMS

14' Moldboard
 5 ripper shanks
 9 scarifier shanks
 Endbits
 Overload protection (Brakaway)- moldboard
 Front push block
 Articulation frame lock bar
 Drawbar-low maintance circle
 Cooling package, cleanout access, cleanout screens
 Compartmetn doors (2), engine, locking
 Adjustable independent- control positions (Levers-to-seate, seat-to-pedals)
 ROPS/FOPS cab
 AM/FM radio with USB charging and Bluetooth connectivity
 Auto climate control/air conditioner and heat
 Built-in operator's manual storage compartment and manual

12 and 24V outlets 60 watt 5 amp
 Deluxe heated air suspension cloth seats
 Front windshield wiper with varible speeds
 Left and right side doors with wipers
 Rear window with wiper
 Illuminated gauge: diesel exhaust fluid, engine coolant, and fuel levels
 Electric over hydraulic controls for 8 functions
 Acclerator pedal
 Inching pedal
 Horn, Electric
 Hour meter, Electric
 Hydraulic lock out switch, all controls
 Operator presents Hyd lock out
 Operator steering wheel & Joystick steering controls
 Interior light
 Joystick gear selection
 Auto articulation (Return to center)
 Rearview mirror
 Left and right side rearview mirrors
 Large cup holder
 Escape tool (Emergency exit)
 Left and right side cab ladders
 Multifuction color LCD monitor with : Diagnostic capability/ Multiple-lan-
 guages/maintenance tracking/clock
 System monitoring with alarm features: engine air cleaner restriction
 indicator light, engine check, engine coolant temperature indicator light with
 audible alarm, engine oil pressure indicator light with audible alarm, low-al-
 terna - tor-charge indicator light, low-fuel indicator light, low DEF indication
 with audible alarm, fault code alert indicator, fuel-rate display, wiper-mode
 indicator, work-lights-on indicator, and work-mode indicator
 Retractable seat belt (2 in)
 Hydraulic oil filter restriction indicator light
 Electronic throttle control

ELECTRICAL

24V Electrical system
 120-amp alternator
 Heavy duty, maintenance free btteries, (1100 CCA)
 Ground level electrical disconnect (lockout tag out)
 Blade-type multi-fused circuits
 Electrical starter
 Positive-terminal battery covers
 Back up alarm
 Rearview camera
 Work lights: high-power LED--2 mounted on frame, 2 mounted on top of cab,
 2 mounted on bottom of cab, 2 mounted on back of cab, 2 mounted on rear
 of machine
 2 Halegon lights on front of machine

OTHER SPECIFICATIONS

WEIGHT

Operation Weight	45,768 lbs
Operating Weight--Maximum	45,768 lbs
Loading--Rear Axle / Tandem	33,808 lbs
Blade Down Pressure	18,925 lbf

HYDRAULIC SYSTEM

Output Flow of Working Pump (at rate speed)	65 gal/min
Max Working Pressure of Implement System	1.45 psi
Transmission Control Pressure	3.19-4.35 psi

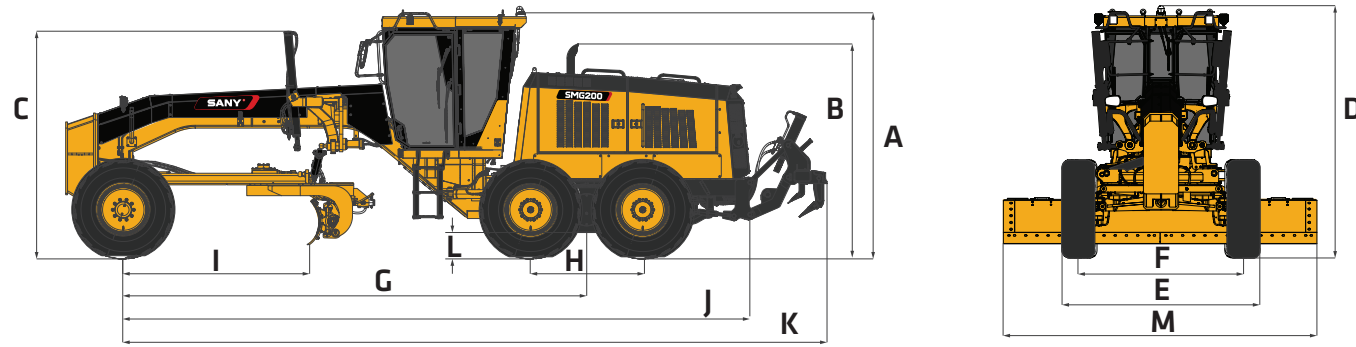
POWERTRAIN

Drive Configuration	6 x 4
Traction Aid	Manual Differential Lock
Service Brake Type	Wet Multiple-Disc
Number of Axles	1
Tire Size--Standard	17.5-25

SERVICE REFILL CAPACITIES

Hydraulic Oil Tank	29 gal
Fuel Tank	89 gal
DEF Tank	5 gal
Differential Axle Capacity	12 gal
Coolant Capacity	14.5 gal
Batter Cold Cranking Amps	1,100 CCA
Alternator	120 Amps
Transmission	14.5 gal

CONNECTED, INFORMED, IN CONTROL TECHNOLOGY



DIMENSIONS

A	Height to Top of Cab	11' 6"
B	Height of Exhaust Pipe	9' 7"
C	Height of Top Cylinders	10' 2"
D	Height Over ROPS	11' 6"
E	Width Over STD Tires	8' 11"
F	Width to Tire Center	7' 2"
G	Wheelbase	20' 8"
H	Rear Wheelbase	5'
I	Front Axle to Blade	8' 3"
J	Length (F/R)	30' 2"
K	Overall Length	34' 8"
L	Ground Clearance	15"
M	Width-Moldboard	14'

CONNECTED EVI TELEMATICS

EVI is SANY's proprietary telematics platform and is available through your local dealer on all SMG200 motor graders. This dashboard lets you track and geofence the machine, view reports on consumption and run time, monitor error codes and manage your SANY fleet—all with more features continually being launched to keep you connected and in control.

GRADE CONTROL COMPATIBLE

The SANY SMG200 motor grader is compatible with most major 3D indicate grade control systems, delivering superior accuracy and quicker results. This compatibility minimizes rework, boosts efficiency, and maintains steady production, so your machine provides greater value on every grading job.

INFORMATION AT YOUR FINGERTIPS

The SANY SMG200 motor grader features a multifunction color LCD monitor as the operator's central hub, displaying essential machine data including fuel levels, DEF levels, engine coolant temperature, hydraulic oil status, and more. It provides diagnostic capabilities, fault code alerts with audible warnings, maintenance tracking, clock, multiple language support, and system monitoring indicators for air cleaner restriction, oil pressure, low fuel, low DEF, and more, all integrated into one intuitive, easy-to-read display for enhanced control and efficiency.



In the interest of continual equipment development, SANY America Inc. reserves the right to change these specifications at any time without prior notification.
©2026 SANY America Inc. HEXPS265SMG200GEN2001



*Warranty applies to 2026 Crane, Telehandler, Grader and Roller models only.

SANY America Inc. 318 SANY Way
Peachtree City, Georgia 30269
470.552.SANY sanyamerica.com



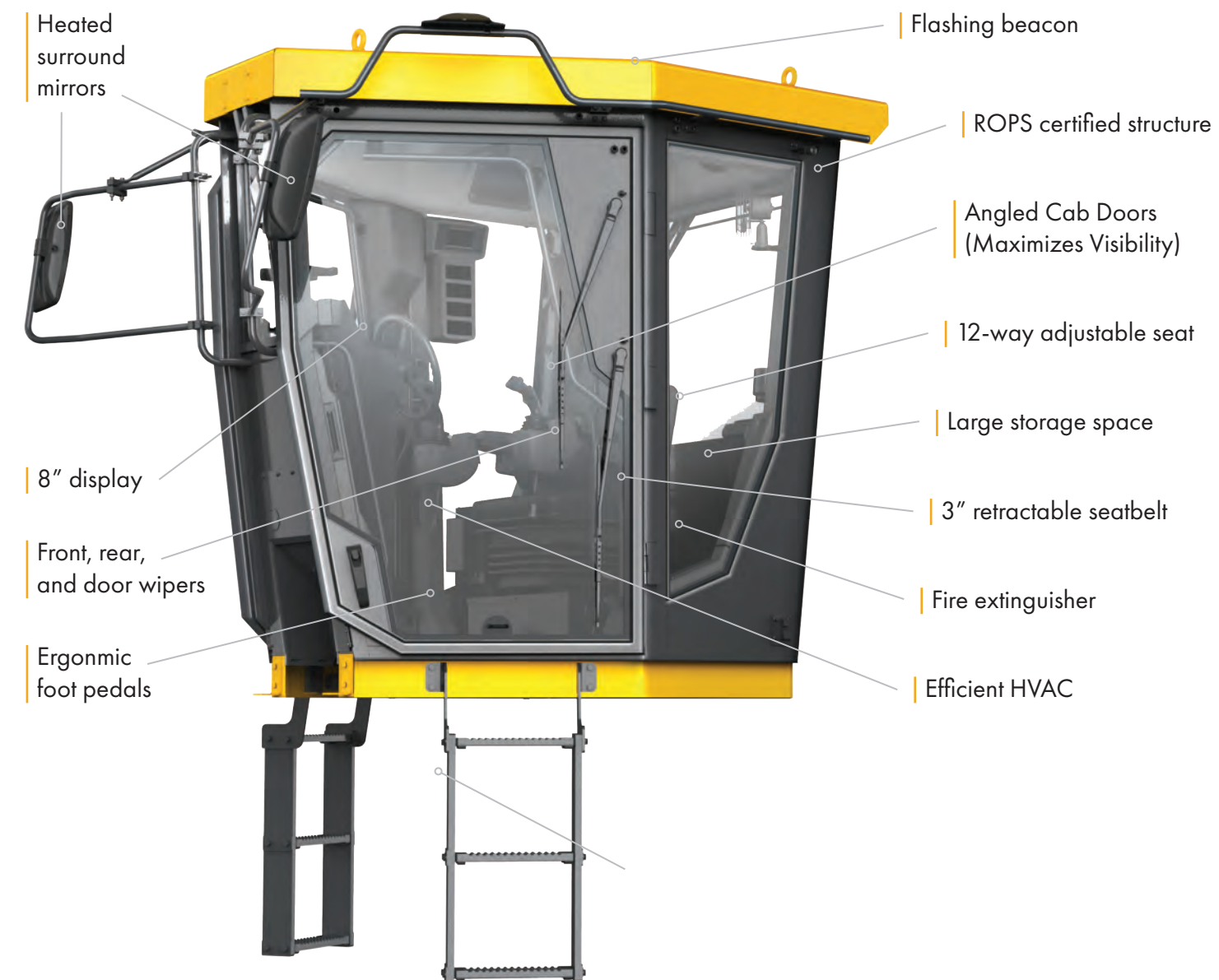
12 POINTS

of heated seat adjustability.

DESIGNED FOR COMFORT ALL SHIFT LONG

This spacious cab is built for comfort and intuitiveness with safety and ergonomics at the core. The seat offers 12 adjustment points to achieve the ideal position and flip up joystick control for ease of egress. SANY's E-panel places common functions within easy reach and the display serves as the control hub. Upgraded HVAC keeps the cab comfortable in any weather, while Bluetooth connectivity and improved noise isolation allow clear hands-free calls. Large glass panels maximize visibility of the work area, helping operators stay comfortable and productive throughout the shift.

BUILT AROUND THE OPERATOR



CUSTOM OPERATOR ERGONOMICS

The 12-way adjustable air-ride seat gives operators complete control over their seating position—height, distance, and angle—so they can align perfectly with the joysticks and foot pedals. This precise adjustability supports better control and a more comfortable working posture all day long.

OPTIMAL JOBSITE AWARENESS

Large glass panels, angled door design, and integrated backup and blind-side cameras give operators a clear view of their surroundings and worktools. With added surround-view mirrors, they can confidently and safely control the machine on the jobsite.

INTENTIONALLY ENGINEERED FOR SERVICE

UPTIME IS OUR PRIORITY

With fast diagnostics, streamlined repairs and software tools for remote support it's easy to keep your SANY excavator running strong. Our local dealer network, stretching across North America, provides quick response and maximizes your productivity.

DEDICATED TO SUPPORT

We're expanding our U.S. footprint with local engineering, quality assurance and service teams—backed by a multi-year investment in support, training, and parts.

PARTS ON THE SHELF READY TO SHIP

We continually expand parts inventory across our major North American distribution centers and improve forecasting to keep high-demand components in stock. This longterm strategy ensures critical parts are ready to ship when they're needed most.

EASE OF ACCESS

Its spacious compartments offer ample room for tools, filters, and components, ensuring efficient inspections and replacements that minimize downtime on the job site.

FAST DAILY PRE-CHECKS

Machines are designed so operators can safely and easily inspect critical systems—mostly from the ground—for quick visual and manual checks.



WE'VE GOT YOUR BACK

At SANY, we see every customer as a relationship whose success is directly tied to ours. We focus on keeping you productive, because when your machines are running, your business is winning. Our warranty support, faster claim approvals, not just our equipment. Your feedback fuels continuous improvement—real updates to software, hydraulics, and performance through close collaboration with key suppliers. With expanding U.S. support, trained technicians, ongoing investments, and stronger parts availability, we stay by your side so your business can keep moving forward.

CUSTOMERS FIRST ALWAYS

At SANY America, everything begins with you. We design machines that make your work safer, more efficient, and more profitable—and we stand behind them with U.S.-based support you can count on. From ergonomic cabs and superior visibility to quick daily checks and dependable uptime, every feature is engineered around real operator needs and real jobsite demands. Your feedback directly drives our product improvements, accelerating software updates, hydraulic refinements, and long-term durability enhancements. With expanding American facilities, local engineering and service teams, certified technicians, and three parts distribution centers nationwide, we operate as your committed business partner—focused on your success today and every day ahead.

FINANCING THAT WORKS AS HARD AS YOU DO

Smart financing that makes owning SANY equipment faster, easier, and affordable.

- **Quick approvals – many customers approved in under 5 minutes**
- **Simple mobile app for secure document signing and easy payment management**
- **Flexible terms and competitive promotions, including 0% for 60 months**
- **Faster approvals for repeat customers to keep your fleet growing**
- **Top-rated experience with a 4.95 out of 5 Trustpilot score**

Financing with SANY is built to support your business growth every step of the way.

INDUSTRY'S **STRONGEST** STANDARD WARRANTY

SANY America delivers the most comprehensive standard warranty in the industry—protecting your investment from day one.

- **3 years/3,000 hour of full machine coverage with every motor grader**
- **Lower total operating risk and fewer unexpected costs over machine life**
- **Confidence in long-term durability backed by factory engineering and testing**
- **Stronger coverage than leading OEM competitors – standard, not add-on**

Choosing SANY means choosing equipment built to work—and a partner committed to standing behind your success.

TOTAL COST OF OWNERSHIP

SANY machines are engineered to deliver a stronger return on investment by lowering the true cost of ownership over the life of your equipment.

- **Fuel-efficient performance reduces operating costs every hour the machine runs**
- **Extended service intervals minimize downtime and maintenance expense**
- **Parts cost management keeps replacement and wear items affordable**
- **High resale value helps protect your investment over time**
- **More standard features from the factory reduce the need for costly add-ons**

Every detail is designed to help you earn more, spend less, and get maximum value from every machine you own.



SANY

**INDUSTRY'S
STRONGEST
STANDARD
WARRANTY** | **3-YEAR
3,000 HOURS**

*Warranty applies to 2026 Crane, Telehandler,
Grader and Roller models only.

SANY America Inc.

318 SANY Way

Peachtree City | GA 30269

T | 470-552-SANY

HEXPS26SMG200GEN2001

sanyamerica.com

In the interest of continual equipment development,
SANY America Inc. reserves the right to change these
specifications at any time without prior notification.

© 2026 SANY America Inc.

