

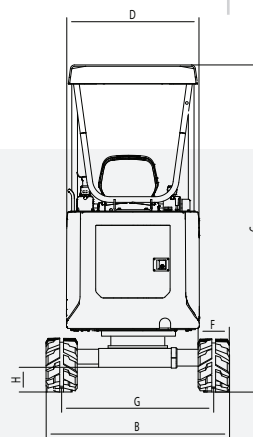
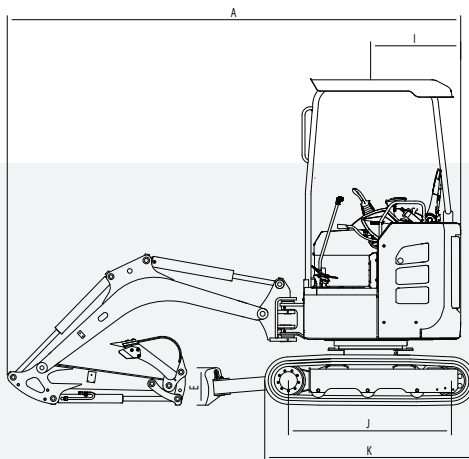
# EXCAVATOR

# SY18U

## STANDARD FEATURES

- ➔ Swing boom functionality
- ➔ Zero tail swing
- ➔ 1-way and 2-way primary auxiliary
- ➔ Retractable tracks
- ➔ Powerful Yanmar Engine

**18.2 hp**  
Net Power  
**8' 6"**  
Dig Depth  
**4,244 lbs**  
Operating Weight  
**3,732 lbf**  
Bucket Breakout



## TECHNICAL SPECIFICATIONS

### TECHNICAL SPECIFICATIONS

Operating Weight	4,244 lbs	1925 kg
Ground Pressure	4.4 psi	30 kPa
<b>Engine</b>	Yanmar 3TNV80F	
Displacement	77.5 in <sup>3</sup>	1.27 L
Gross Power	19.6 HP	14.6 kW
Net Power	18.2 HP	13.6 kW
<b>Hydraulics</b>	Load Sensing with Pilot Control	
Main Hydraulic Pump	Axial Piston - Variable Displacement	
Operating Flow (maximum)	17 gal/min	66.0 L/min
Operating Pressure (maximum)	3,553 psi	24.5 MPa
Auxiliary Flow (maximum)*	11 gal/min	40 L/min
Auxiliary Pressure (maximum)	2,321 psi	16 MPa
<b>Travel Motor</b>	Axial Piston	
Travel Pressure (maximum)	3,553 psi	24.5 MPa
Travel Speeds (maximum)	1.9 / 2.5 mph	3.0 / 4.0 km/hr
Travel Effort (maximum)	3,507 lbf	15.6 kN
Grade Capability (maximum)	30°	
<b>Swing Motor</b>	Axial Piston	
Swing Pressure (maximum)	2,350 psi	16.2 MPa
Swing Speed (maximum)	10 RPM	
<b>Undercarriage</b> (standard)	Belted Rubber Track	
Track Shoe Width (standard)	9"	230 mm
Track Rollers (per side)	3	
Carrier Rollers (per side)	-	

## DIMENSIONS

### DIMENSIONS

Boom Length	5' 10"	1770 mm
Stick Length	3' 10"	1160 mm
A Transport Length	11' 6"	3 515 mm
B Transport Width	3' 3" / 4' 5"	980 / 1 350 mm
C Transport Height	7' 9"	2 370 mm
D Upper Structure Width	3' 3"	980 mm
E Blade Height	11"	270 mm
F Track Width (standard shoe)	9"	230 mm
G Track Gauge	2' 6" / 3' 8"	750 / 1 120 mm
H Ground Clearance (minimum)	6"	160 mm
I Tail Swing Radius	2' 3"	675 mm
J Track Length on Ground	4' 0"	1 220 mm
K Track Length	5' 2"	1 585 mm

### SERVICE REFILL CAPACITIES

Fuel Tank Capacity	5.5 gal	21.0 L
Hydraulic Tank Capacity	5.5 gal	21.0 L
Engine Oil Capacity	0.9 gal	3.4 L
Cooling System Capacity	1.4 gal	5.4 L

SANY America Inc. reserves the right to change these specifications at any time without prior notification. ©2025 SANY America Inc. HEXPS255Y18U001

\*Based on theoretical calculation at max flow with no load. Subject to alterations. In the interest of continual equipment development,



STANDARD AND OPTIONAL EQUIPMENT

s = standard / o = optional

SY18U	ENGINE
s	Yanmar 3TNV80F
s	Tier 4F / EU Stage V Ready
s	Auto - idle
s	Dual-element dry air filter
s	Engine air precleaner
s	Coolant Expansion tank
s	EGR Valve
s	Fan guard
s	Engine coolant to -37 deg. C (-34 deg. F)
s	Full-flow oil filter
s	High flow cooling fan
s	500-hour engine-oil-change interval
s	Fuel filter and water separator
HYDRAULIC SYSTEM	
s	Spring-applied, hydraulically released automatic swing brake
s	Load sensing hydraulic system
s	Control pattern change valve
s	Primary auxiliary hydraulic circuit with 1 and 2-way combination piping
s	Adjustable auxiliary pressure relief
s	Quick coupler plumbing
s	Continuous flow
s	Topside boom cylinder
UNDERCARRIAGE	
s	Expandable and retractable tracks
s	Planetary drive with axial piston motors
s	Propel motor shields
s	Spring-applied, hydraulically released automatic propel brake
s	Track guides, front idler and 2 per side
s	2-speed travel selection through display and on dozer lever
s	3 lower track rollers each side
s	1 upper carrier roller each side
s	Dozer blade and cylinder guarding
s	Flip out dozer blade extensions
s	Tie downs on track frame and dozer blade
s	230mm (9") wide rubber tracks
o	230mm (9") wide steel tracks
s	Undercarriage frame opening guard
UPPERSTRUCTURE	
s	Right-hand, left-hand, and counterweight mirrors
s	Lockable cab, hood, and service doors

In the interest of continual equipment development, SANY America Inc. reserves the right to change these specifications at any time without prior notification.  
 ©2025 SANY America Inc. HEXPS25SY18U001



\*Warranty applies to 2025 Excavator and Wheel Loader models



STANDARD AND OPTIONAL EQUIPMENT

s = standard / o = optional

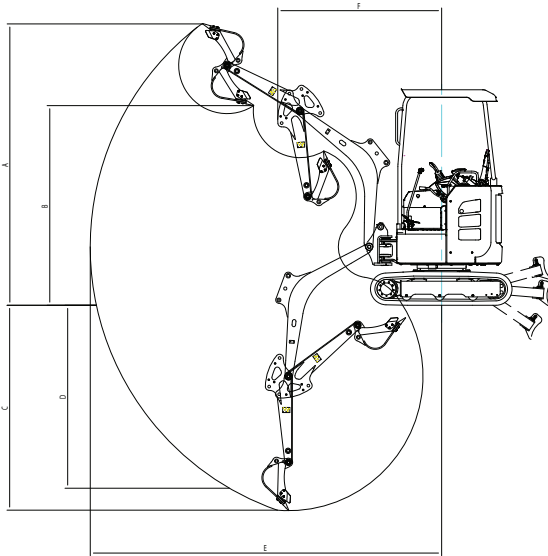
SY18U	UPPERSTRUCTURE (Continued)
s	Remote-mounted engine oil and fuel filters
s	Daily fluid level inspection visible from ground
s	Rear reflectors
ATTACHMENTS	
s	Convenient grease points
s	Dirt seals on all bucket pins
s	Thumb bracket
s	Oil-impregnated bushings
s	Reinforced thrust plates
OPERATOR'S STATION	
s	Hydraulic pilot controls for boom, stick, swing, and travel operations
s	Proportional auxiliary switches on joystick
s	Travel levers with foot pedals
s	Weight adjustable suspension vinyl seat with fore/aft adjustment
s	2" retractable seat belt
s	Emergency stop switch
s	Monitor with engine coolant gauge, high temp warning, low oil pressure indicator, glow plug indicator, battery indicator, engine hour meter, fuel level, multiple attachment mode, continuous flow, QC setting
s	Operation and maintenance manual storage
s	Heavy duty removeable rubber floor mat
s	Cup holder
s	Storage bin
s	Horn, electric
s	Hour meter, electric
s	Hydraulic shutoff lever, all controls
s	Travel alarm with cancel switch
ELECTRICAL	
s	12V electrical system
s	Maintenance free battery
s	Ground level battery disconnect
s	Easy access fuse panel
s	Terminal battery covers
s	55-amp alternator
s	12V power outlet
LIGHTS	
s	Work lights: 2 mounted on top of canopy, 1 mounted on boom, magnetic beacon

In the interest of continual equipment development, SANY America Inc. reserves the right to change these specifications at any time without prior notification.  
 ©2025 SANY America Inc. HEXPS25SY18U001



# PRODUCT SPECIFICATIONS EXCAVATOR III SY18U

## WORKING RANGE



### WORKING RANGE

Boom Length	5' 10"	1770 mm
Stick Length	3' 10"	1160 mm
A Maximum Digging Height	11' 8"	3 550 mm
B Maximum Dumping Height	8' 1"	2 475 mm
C Maximum Digging Depth	8' 6"	2 585 mm
D Maximum Vertical Wall Digging Depth	7' 3"	2 205 mm
E Maximum Reach at Ground Level	13' 7"	4 135 mm
F Minimum Swing Radius	5' 8"	1 715 mm

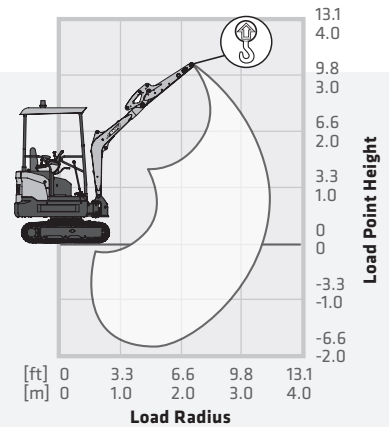
### DIGGING PERFORMANCE

Boom Length	5' 10"	1770 mm
Stick Length	3' 10"	1160 mm
Bucket Breakout Force (ISO)	3,732 lbf	16.6 kN
Stick Digging Force (ISO)	1,866 lbf	8.3 kN

## LIFTING PERFORMANCE

- Standard 5'10" (1 770 mm) Boom
- Standard 3'10" (1 160 mm) Stick
- Standard 9" (230 mm) Track Shoes
- Maximum 3'8" (1 120 mm) Track Gauge
- No Bucket

Ratings are based on ISO 10567:2007. Lift capacity does not exceed 75% of tipping load with the machine on firm, level ground or 87% of hydraulic lifting capacity.



	LOAD RADIUS	4.9 ft 1.5 m		6.6 ft 2.0 m		8.2 ft 2.5 m		9.8 ft 3.0 m		MAX REACH	
		Front	Side	Front	Side	Front	Side	Front	Side	Front	Side
BLADE DOWN	9.8 ft 3.0 m									584 lb* 265 kg*	584 lb* 265 kg*
	6.6 ft 2.0 m							644 lb* 292 kg*	580 lb* 263 kg*	562 lb* 255 kg*	496 lb* 225 kg*
	3.3 ft 1.0 m			1140 lb* 517 kg*	1016 lb* 461 kg*	915 lb* 415 kg*	733 lb* 333 kg*	807 lb* 366 kg*	562 lb* 255 kg*	564 lb* 256 kg*	425 lb* 193 kg*
	0 ft 0 m	1459 lb* 662 kg*	1435 lb* 651 kg*	1706 lb* 774 kg*	937 lb* 425 kg*	1193 lb* 541 kg*	690 lb* 313 kg*	913 lb* 414 kg*	540 lb* 245 kg*	657 lb* 298 kg*	425 lb* 193 kg*
	-3.3 ft -1.0 m	2202 lb* 999 kg*	1455 lb* 660 kg*	1433 lb* 650 kg*	930 lb* 422 kg*	1032 lb* 468 kg*	682 lb* 309 kg*	754 lb* 342 kg*	536 lb* 243 kg*	688 lb* 312 kg*	511 lb* 232 kg*
BLADE UP	9.8 ft 3.0 m									584 lb* 265 kg*	584 lb* 265 kg*
	6.6 ft 2.0 m							573 lb* 260 kg*	580 lb* 263 kg*	489 lb* 222 kg*	496 lb* 225 kg*
	3.3 ft 1.0 m			1019 lb* 462 kg*	1016 lb* 461 kg*	730 lb* 331 kg*	733 lb* 333 kg*	558 lb* 253 kg*	562 lb* 255 kg*	419 lb* 190 kg*	425 lb* 193 kg*
	0 ft 0 m	1457 lb* 661 kg*	1435 lb* 651 kg*	937 lb* 425 kg*	937 lb* 425 kg*	686 lb* 311 kg*	690 lb* 313 kg*	534 lb* 242 kg*	540 lb* 245 kg*	419 lb* 190 kg*	425 lb* 193 kg*
	-3.3 ft -1.0 m	1479 lb* 671 kg*	1455 lb* 660 kg*	933 lb* 423 kg*	930 lb* 422 kg*	677 lb* 307 kg*	682 lb* 309 kg*	529 lb* 240 kg*	536 lb* 243 kg*	505 lb* 229 kg*	511 lb* 232 kg*

\* Indicates load limited by hydraulic lifting capacity.

