

# EXCAVATOR

# SY335C LC

## STANDARD FEATURES

- ➔ Heavy-duty, long undercarriage
- ➔ 1-way and 2-way primary auxiliary and 2-way secondary auxiliary circuits with dedicated auxiliary rotate pump
- ➔ 10.4" touchscreen display
- ➔ Heated air ride seat with adjustable control panels
- ➔ Blind side and rear view cameras
- ➔ Powerful Cummins Engine

**280 hp**

Gross Power

**22' 4"**

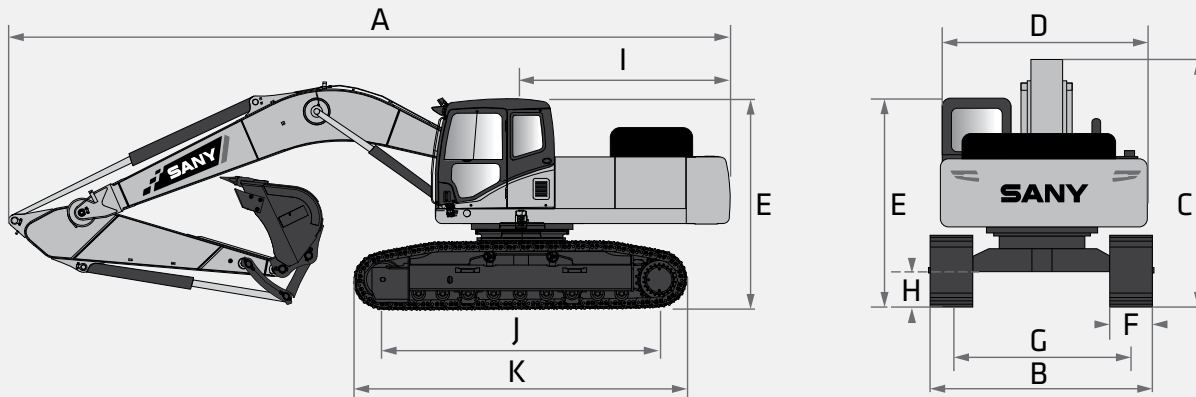
Dig Depth

**74,075 lbs**

Operating Weight

**45,861 lbs**

Bucket Breakout



## TECHNICAL SPECIFICATIONS

### TECHNICAL SPECIFICATIONS

|                                 |                                      |                 |
|---------------------------------|--------------------------------------|-----------------|
| Operating Weight                | 74,075 lbs                           | 33 600 kg       |
| Ground Pressure                 | 8.8 psi                              | 60.3 kPa        |
| <b>Engine</b>                   | Cummins L9 Stage V                   |                 |
| Displacement                    | 598.0 in <sup>3</sup>                | 9.8 L           |
| Engine Power (at rated speed)   | 280.3 HP                             | 209 kW          |
| <b>Hydraulics</b>               | Positive Flow System                 |                 |
| Main Hydraulic Pump             | Axial Piston Variable Displacement   |                 |
| Operating Flow (maximum)        | 147 gal/min                          | 560 L/min       |
| Operating Pressure (maximum)    | 4,975 psi                            | 34.3 MPa        |
| Power Boost Pressure (maximum)  | 5,410 psi                            | 37.3 MPa        |
| <b>Travel Motor</b>             | 2*Axial Piston Motor w/Parking Brake |                 |
| Travel Pressure (maximum)       | 4,975 psi                            | 34.3 MPa        |
| Travel Speeds (low / high)      | 2.1 / 3.2 mph                        | 3.4 / 5.2 km/hr |
| Travel Force (maximum)          | 55,078 lbf                           | 245.0 kN        |
| Grade Capability (maximum)      | 35°                                  |                 |
| <b>Swing Motor</b>              | Axial Piston Motor w/Swing Brake     |                 |
| Swing Pressure (maximum)        | 3,989 psi                            | 27.5 MPa        |
| Swing Speed (maximum)           | 9.0 RPM                              |                 |
| <b>Undercarriage (standard)</b> | Steel Track                          |                 |
| Track Shoe Width (standard)     | 31"                                  | 800 mm          |
| Track Rollers (per side)        | 9                                    |                 |
| Carrier Rollers (per side)      | 2                                    |                 |

## DIMENSIONS

### DIMENSIONS

|                               |         |           |
|-------------------------------|---------|-----------|
| Boom Length                   | 20' 2"  | 6 150 mm  |
| Stick (Arm) Length            | 10' 6"  | 3 200 mm  |
| A Transport Length            | 35'     | 10 667 mm |
| B Transport Width             | 11' 2"  | 3 396 mm  |
| C Transport Height            | 11' 5"  | 3 470 mm  |
| D Upper Structure Width       | 10' 4"  | 3 147 mm  |
| E Blade Height                | -       | -         |
| F Track Width (standard shoe) | 31"     | 800 mm    |
| G Track Gauge                 | 8' 6"   | 2 590 mm  |
| H Minimum Ground Clearance    | 2'      | 550 mm    |
| I Tail Swing Radius           | 10' 11" | 3 315 mm  |
| J Center Distance of Tumblers | 13' 7"  | 4 140 mm  |
| K Track Length                | 16' 7"  | 5 055 mm  |

### SERVICE REFILL CAPACITIES

|                         |          |         |
|-------------------------|----------|---------|
| Fuel Tank Capacity      | 143 gal  | 540.0 L |
| Engine Coolant          | 13.5 gal | 51.0 L  |
| Engine Oil              | 7.9 gal  | 30.0 L  |
| Swing Drive             | 2.8 gal  | 10.5 L  |
| Final Drive (each side) | 2.3 gal  | 8.5 L   |
| Hydraulic Oil Tank      | 79.3 gal | 300.0 L |

STANDARD AND OPTIONAL EQUIPMENT

s = standard / o = optional

| SY335C LC        | ENGINE  |
|------------------|---|
| s                | 8.9l Cummins (Cummins QSL9 Stage V)   |
| s                | Auto-idle   |
| s                | Dual-element dry air filter   |
| s                | Batteries 24V (2 - 12V)   |
| s                | Coolant Expansion tank  |
| s                | Electronic engine control   |
| s                | Enclosed fan guard  |
| s                | Engine coolant to -37 deg. C (-34 deg. F)   |
| s                | Fuel filter with water separator  |
| s                | Full-flow oil filter  |
| s                | Turbocharger with charge air cooler   |
| s                | High flow electric clutch actuated fan  |
| s                | 500-hour engine-oil-change interval   |
| s                | 70% (35 deg.) off-level capability  |
| s                | Engine air precleaner   |
| s                | Severe-duty fuel filter   |
| HYDRAULIC SYSTEM |   |
| s                | Spring-applied, hydraulically released automatic swing brake                      |
| s                | Auxiliary hydraulic-flow adjustments through monitor                              |
| s                | Control pattern change valve  |
| s                | Auxiliary hydraulics with 1 and 2-way combination piping for high flow            |
| s                | Auxiliary hydraulics with 2- way rotation piping and controls with dedicated pump |
| s                | Auxiliary pilot and electric controls   |
| s                | Auto power boost for higher dig performance                                       |
| s                | Quick coupler plumbing and control  |
| UNDERCARRIAGE    |   |
| s                | Planetary drive with axial piston motors  |
| s                | Propel motor shields  |
| s                | Spring-applied, hydraulically released automatic propel brake                     |
| s                | Track guides, front idler and 2 additional per side                               |
| s                | 2-speed travel selection  |
| s                | Upper carrier rollers (2) , bottom rollers (9)                                    |
| s                | Sealed and lubricated track chain   |
| s                | Triple semi-grouser shoes, 800 mm (32")   |
| s                | Undercarriage frame opening guard   |
| BOOM & STICK     |   |
| s                | Boom 6.15 m (20' 2")  |
| s                | Stick, 3.2 m (10' 5")   |
| UPPERSTRUCTURE   |   |
| s                | Right-hand, left-hand, and counterweight mirrors                                  |
| s                | Vandal lockwith ignition key: Cab door /Service door/ Toolbox/Cab Filter          |
| s                | Debris screen in side panel   |
| s                | Remote-mounted engine oil and fuel filters  |
| s                | Daily fluid level inspection visible from ground                                  |
| s                | Heavy duty triangle channel frame guard   |
| ATTACHMENTS      |   |
| s                | Convenient grease points  |
| o                | Centralized lubrication system  |
| s                | Dirt seals on all bucket pins   |



STANDARD AND OPTIONAL EQUIPMENT

s = standard / o = optional

| SY335C LC          | ATTACHMENTS CONTINUED   |
|--------------------|---|
| s                  | Oil-impregnated bushings  |
| s                  | Reinforced resin thrust plates  |
| o                  | Quick coupler   |
| o                  | Buckets: Heavy duty / Heavy-duty high capacity / Side cutterand teeth   |
| OPERATOR'S STATION |   |
| s                  | ROPS certified cab (ISO 12117-2)  |
| s                  | Adjustable independent-control positions (levers-to-seat, seat-to-pedals)   |
| s                  | AM/FM radio with USB charging and Bluetooth® connectivity   |
| s                  | High performance auto climate control/air conditioner/heater/pressurizer  |
| s                  | Built-in Operator' Manual storage compartment and manual  |
| s                  | 12V/24V outlets   |
| s                  | Deluxe heated air suspension cloth seat with adjustable armrests  |
| s                  | Heavy duty rubber floor mat   |
| s                  | Front windshield wiper with intermittent speeds and auto shut off when front window is open   |
| s                  | Illuminated gauge: diesel exhaust fluid, engine coolant, and fuel levels  |
| s                  | Horn, electric  |
| s                  | Hour meter, electric  |
| s                  | Hydraulic shutoff lever, all controls   |
| s                  | Interior light  |
| s                  | Large cup holder  |
| s                  | Digital power mode selection: 3 power modes- low, standard, and high  |
| s                  | Digital tool selection: bucket, shear, hammer, etc. saving up to 10 tools each in display   |
| s                  | Fully adjustable auxiliary flow circuits and pressure from display  |
| s                  | Multifunction color LCD monitor with: Diagnostic capability / Multiple-language / Maintenance tracking / Clock  |
| s                  | System monitoring with alarm features: Auto-idle indicator, engine air cleaner restriction indicator light, engine check, engine coolant temperature indicator light with audible alarm, engine oil pressure indicator light with audible alarm, low-alternator-charge indicator light, low-fuel indicator light, low DEF indication with audible alarm, fault code alert indicator, fuel-rate display, wiper-mode indicator, work-lights-on indicator, and work-mode indicator |
| s                  | Motion alarm with cancel switch (conforms to SAE J994)  |
| s                  | Overload alarm and adjustable lift pressure threshold adjustment  |
| s                  | Proportional auxiliary switches on joystick   |
| s                  | Seat belt, 2", Retractable  |
| s                  | Transparent overhead hatch  |
| s                  | Heated or cooled food/beverage storage  |
| s                  | USB charging port   |
| o                  | Protection screens for cab front, rear, and side  |
| ELECTRICAL         |   |
| s                  | 60-amp alternator   |
| s                  | Ground level electrical disconnect (lockout tag out)  |
| s                  | Blade-type multi-fused circuits   |
| s                  | Positive-terminal battery covers  |
| s                  | Rearview camera & Right sideview camera   |
| s                  | One touch machine start   |
| LIGHTS             |   |
| s                  | Work lights: 8 High power LED - 2 mounted on boom, 2 mounted on top of Cab, 1 mounted under step on right side of machine, 1 side of machine, and 1 facing rear.  |

In the interest of continual equipment development, SANY America Inc. reserves the right to change these specifications at any time without prior notification.  
©2023 SANY America Inc. HEXP523SY335CLC001



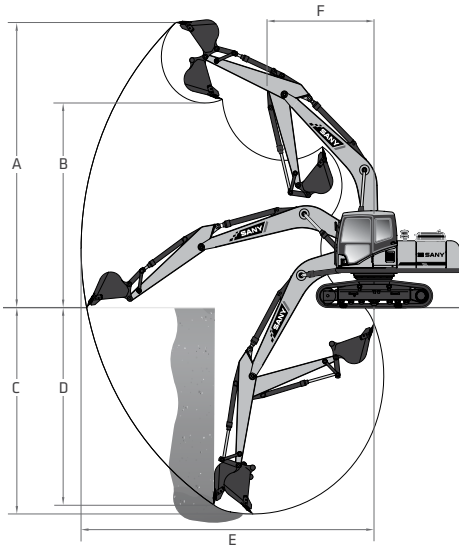
\*Warranty applies to 2023 Excavator and Wheel Loader models only.

sanyamerica.com



# PRODUCT SPECIFICATIONS LARGE EXCAVATOR || SY335C LC

## WORKING RANGE



### WORKING RANGE

|                                  |        |           |
|----------------------------------|--------|-----------|
| Boom Length                      | 20' 2" | 6 150 mm  |
| Stick (Arm) Length               | 10' 6" | 3 200 mm  |
| A Maximum Digging Height         | 34' 5" | 10 497 mm |
| B Maximum Dumping Height         | 24' 2" | 7 359 mm  |
| C Maximum Digging Depth          | 22' 4" | 6 815 mm  |
| D Maximum Vertical Digging Depth | 19'    | 5 800 mm  |
| E Maximum Digging Reach          | 35' 8" | 10 870 mm |
| F Minimum Swing Radius           | 13' 1" | 4 000 mm  |

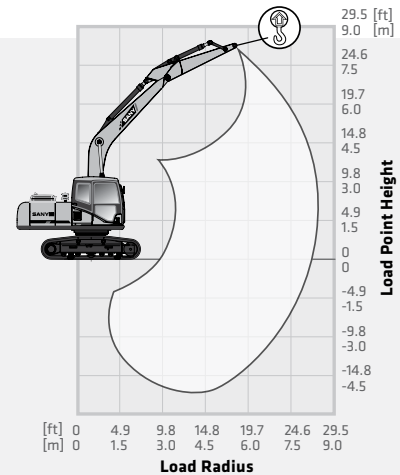
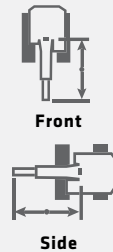
### DIGGING PERFORMANCE

|                                 |            |          |
|---------------------------------|------------|----------|
| Boom Length                     | 20' 2"     | 6 150 mm |
| Stick (Arm) Length              | 10' 6"     | 3 200 mm |
| Bucket Breakout Force (ISO)     | 45,861 lbf | 204.0 kN |
| Stick (Arm) Digging Force (ISO) | 34,396 lbf | 153.0 kN |

## LIFTING PERFORMANCE

**Standard 20' 2" (6 150 mm) Boom**  
**Standard 10' 6" (3 200 mm) Stick**  
**Standard 32" (800 mm) Track Shoes**  
**No Bucket**

Ratings are based on ISO 10567:2007. Lift capacity does not exceed 75% of tipping load with the machine on firm, level ground or 87% of hydraulic lifting capacity.



| LOAD RADIUS        | 4.9 FT<br>1.5 M | 9.8 FT<br>3.0 M           | 14.8 FT<br>4.5 M          | 19.7 FT<br>6.0 M          | 24.6 FT<br>7.5 M          | MAXIMUM                   | ft<br>mm               |                        |                       |                     |
|--------------------|-----------------|---------------------------|---------------------------|---------------------------|---------------------------|---------------------------|------------------------|------------------------|-----------------------|---------------------|
| LOAD POINT HEIGHT  |                 |                           |                           |                           |                           |                           |                        |                        |                       |                     |
| 24.6 ft<br>7.5 m   |                 |                           |                           |                           |                           | 6,929 lbs<br>3 143 kg     | 20.6 ft<br>6 275 mm    |                        |                       |                     |
| 19.7 ft<br>6.0 m   |                 |                           |                           |                           |                           | 6,929 lbs<br>3 143 kg     | 24.2 ft<br>7 360 mm    |                        |                       |                     |
| 14.8 ft<br>4.5 m   |                 |                           |                           | 19,350 lbs*<br>8 777 kg*  | 19,350 lbs*<br>8 777 kg*  | 6,832 lbs<br>3 099 kg     | 26.3 ft<br>8 025 mm    |                        |                       |                     |
| 9.8 ft<br>3.0 m    |                 |                           | 29,324 lbs*<br>13 301 kg* | 23,839 lbs<br>10 813 kg   | 22,218 lbs*<br>10 078 kg* | 7,015 lbs<br>3 182 kg     | 27.5 ft<br>8 370 mm    |                        |                       |                     |
| 4.9 ft<br>1.5 m    |                 |                           | 34,158 lbs*<br>15 494 kg* | 22,280 lbs<br>10 106 kg   | 24,842 lbs*<br>11 268 kg* | 7,454 lbs<br>3 381 kg     | 27.7 ft<br>8 435 mm    |                        |                       |                     |
| 0 ft<br>0 m        |                 |                           | 36,085 lbs*<br>16 368 kg* | 21,533 lbs<br>9 767 kg    | 26,431 lbs*<br>11 989 kg* | 8,195 lbs<br>3 717 kg     | 27.0 ft<br>8 230 mm    |                        |                       |                     |
| -4.9 ft<br>-1.5 m  |                 | 28,526 lbs*<br>12 939 kg* | 28,526 lbs*<br>12 939 kg* | 35,523 lbs*<br>16 113 kg* | 21,358 lbs<br>9 688 kg    | 22,622 lbs<br>10 261 kg   | 14,361 lbs<br>6 514 kg | 9,063 lbs<br>4 111 kg  | 5,959 lbs<br>2 703 kg | 25.4 ft<br>7 730 mm |
| -11.5 ft<br>-3.5 m |                 | 44,924 lbs*<br>20 377 kg* | 44,924 lbs*<br>20 377 kg* | 32,769 lbs*<br>14 864 kg* | 21,555 lbs<br>9 777 kg    | 24,908 lbs*<br>11 298 kg* | 14,434 lbs<br>6 547 kg | 11,014 lbs<br>4 996 kg | 7,266 lbs<br>3 296 kg | 22.5 ft<br>6 870 mm |
| -14.8 ft<br>-4.5 m |                 | 35,929 lbs*<br>16 297 kg* | 35,929 lbs*<br>16 297 kg* | 27,022 lbs*<br>12 257 kg* | 22,117 lbs<br>10 032 kg   | 20,016 lbs*<br>9 079 kg*  | 14,877 lbs<br>6 748 kg | 15,342 lbs<br>6 959 kg | 9,872 lbs<br>4 478 kg | 18.0 ft<br>5 485 mm |

\* Indicates load limited by hydraulic lifting capacity.

In the interest of continual equipment development, SANY America Inc. reserves the right to change these specifications at any time without prior notification.  
 ©2023 SANY America Inc. HEXPS23SY335CLC001

SANY America Inc. 318 SANY Way  
 Peachtree City, Georgia 30269  
 470.552.SANY sanyamerica.com

