

# STH634A



**TELEHANDLER**

15,873 LBS OPERATING WEIGHT  
74 HP GROSS HORSEPOWER  
34' 1" MAX LIFT HEIGHT



WHERE **POWER MEETS**  
**PRECISION**

EASY TO OWN, OPERATE, & SERVICE

INDUSTRY'S  
STRONGEST  
STANDARD  
WARRANTY

3-YEAR  
3,000 HOURS

\*Warranty applies to 2026 Telehandlers.

# MADE FOR AMERICAN OPERATORS

In the heart of the country, a professional builder relies on the SANY STH634A telehandler to support daily construction operations—from site preparation to precise material placement. Designed for demanding jobsite conditions, the STH634A is powered by a proven Deutz diesel engine and equipped with pilot-operated hydraulic controls that provide smooth, predictable response for accurate load handling. A 3-year / 3,000-hour standard warranty reduces ownership risk and protects long-term uptime. Supported by a local SANY dealer network and the SANY America service team, the STH634A delivers dependable performance when schedules are tight and productivity matters. For builders who demand efficiency, durability, and control, SANY provides equipment engineered to perform.



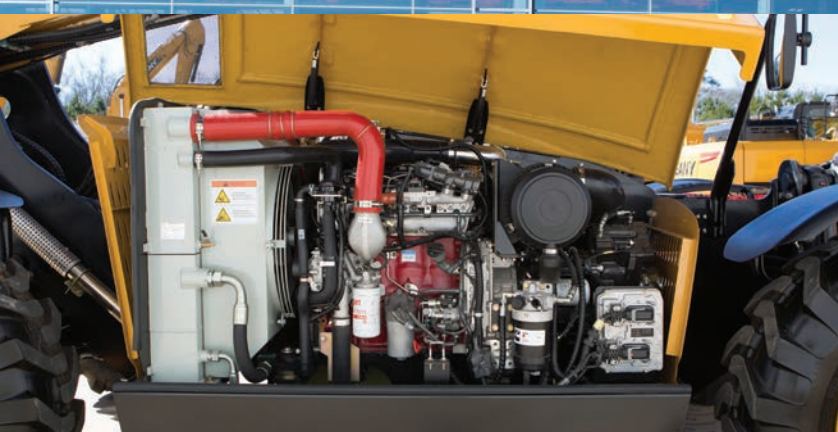
## CAB/CANOPY

The operator's station delivers protection, outstanding visibility, and intuitive access to machine controls—available as an enclosed cab for all-weather performance or an open canopy for maximum ventilation and accessibility.



## QUICK-ATTACH COUPLER

Quick Attach is a coupler system at the end of the boom that allows operators to quickly switch between attachments—such as forks or man baskets—for increased jobsite versatility.



## COMPONENTS YOU TRUST

Built with the best in the business, SANY telehandlers feature trusted components from Deutz, Kawasaki, Parker, and beyond. The result is a reliable, well-supported ecosystem that simplifies ownership and keeps you working with confidence.



## TELESCOPIC BOOM

At the heart of the SANY STH634A is a telescopic boom engineered to deliver exceptional reach, strength, and accuracy on the jobsite. Built for demanding material-handling applications, this boom combines robust construction with smooth, responsive operation to help operators work faster and safer.



## AUXILIARY HYDRAULICS

Equipped with powerful auxiliary hydraulics delivering up to 16 gallons per minute (GPM) of flow, providing the performance needed to run a wide range of hydraulic attachments with confidence. From grapples and buckets to specialty tools, this system expands the machine's versatility across multiple applications.



# A MACHINE THAT'S EASY TO OWN

This 6,000lb class telehandler is built for true versatility, giving you one machine that can handle a wide range of jobs—whether lifting drywall or moving palletized materials—while remaining easy to transport without permitting requirements. A quick-attach coupler allows for fast, simple attachment changes, adding flexibility without unnecessary hassle. Built with components from trusted, well-supported brands, the STH634A delivers confidence in long-term reliability. Its rugged frame is engineered to withstand the daily demands of a construction site while maintaining a stable footprint. The STH634A works hard and makes ownership a pleasure, day after day.

# RELIABLE FROM THE INSIDE OUT

Working long hours while protecting your crew and keeping revenue flowing, the STH634A is built for productivity and reliability. Engineered to withstand thousands of hours in the toughest conditions, its robust structural design handles the stress of constant material movement with ease. Auxiliary hydraulics deliver the pressure and flow needed to power a wide range of hydraulic attachments, ensuring consistent performance across demanding applications. The powertrain is engineered to perform at peak efficiency, keeping production at 100% throughout the workday. Every design choice is made to minimize downtime and maximize productivity—all backed by a 3-year/3,000-hour standard warranty. The result is dependable performance without compromising productivity.

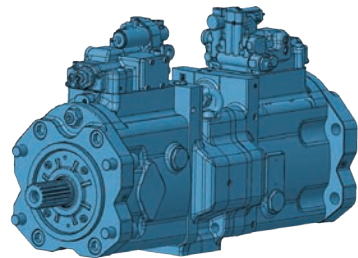
## STRUCTURAL INTEGRITY

SANY doesn't cut corners on steel. It's a philosophy built into every machine we produce. Each telehandler is engineered with the right material in the right places to deliver the strength, stability, and durability today's jobs demand. Heavy-duty frame and boom sections are purpose-built to handle the toughest applications with confidence. Built in SANY's state-of-the-art manufacturing facilities, robotic welding and CNC cutting ensure consistent precision and structural integrity across every machine. Rigorous quality control inspections verify each unit meets SANY's global standards before it ever reaches your jobsite—delivering the reliability you expect from one of the world's leading equipment manufacturers.



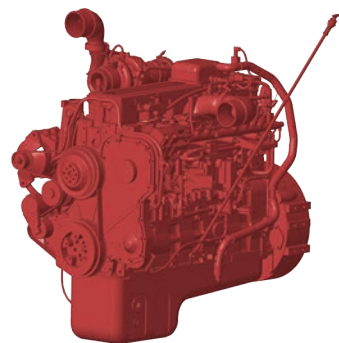
## HYDRAULIC SYSTEM

The STH634A features a pilot-controlled hydraulic system that delivers smooth, predictable control, reducing operator fatigue and increasing confidence during long workdays. Load-sensing hydraulics provide fast cycle times and powerful, efficient lifting performance, allowing operators to place loads accurately and work more productively. Integrated auxiliary hydraulics support a wide range of attachments, expanding the machine's capabilities without sacrificing performance. Combined with intuitive controls and responsive system feedback, the STH634A helps operators stay comfortable, precise, and efficient—keeping productivity high and jobsite operations moving safely.



## POWERED BY DEUTZ

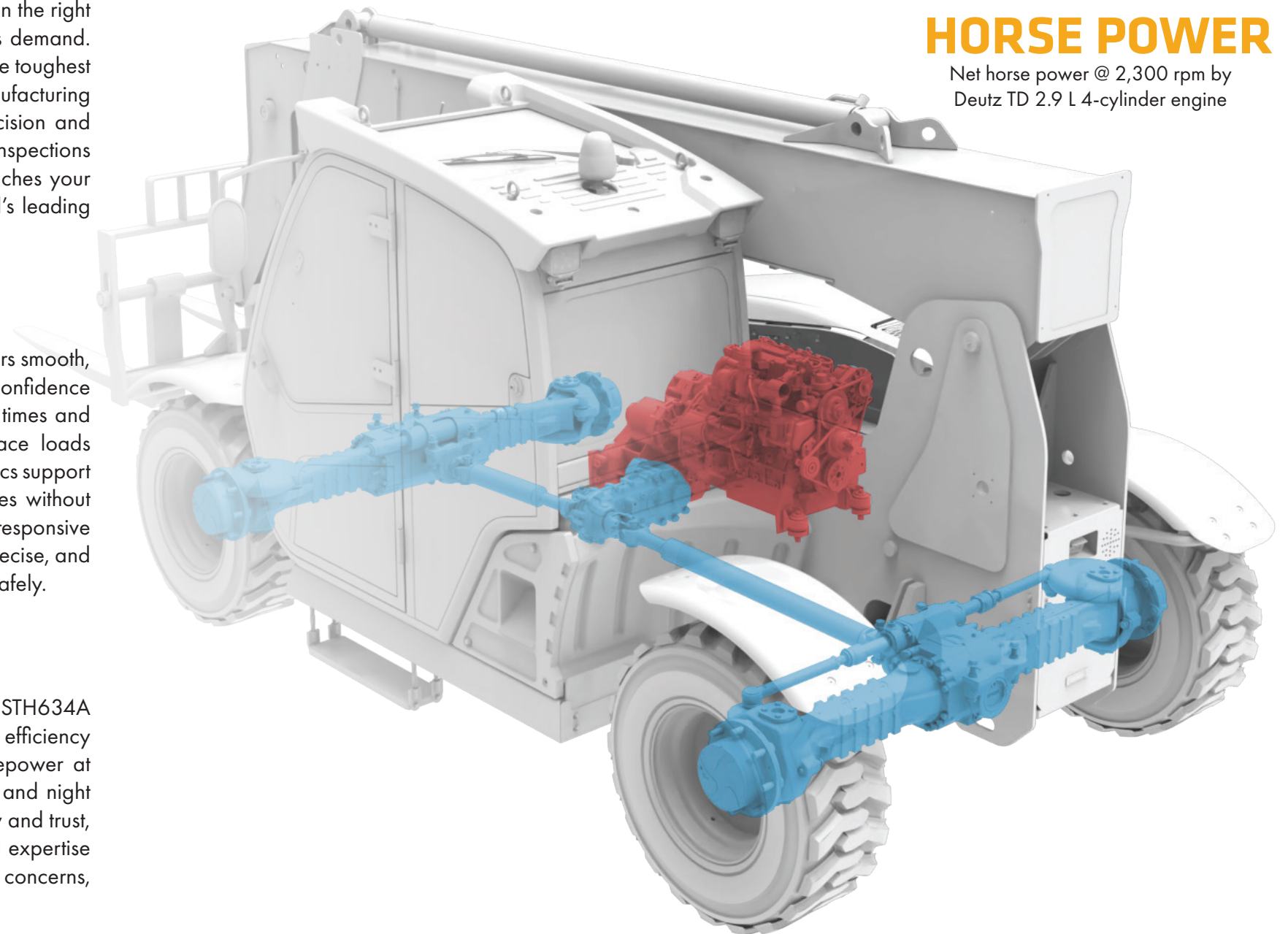
Powered by a Deutz TD 2.9L, 74 hp Tier 4 Final diesel engine, the STH634A meets or exceeds EPA emissions requirements while delivering the efficiency and performance your business depends on. Producing 74 horsepower at 2,300 rpm, it provides the power and torque needed to run day and night on the most demanding jobsites. This is an engine you already know and trust, backed by a global support network that keeps parts, service, and expertise within easy reach. The result is increased uptime, reduced operating concerns, and a machine that works as hard as you do.



# 74

## HORSE POWER

Net horse power @ 2,300 rpm by  
Deutz TD 2.9 L 4-cylinder engine





# 17+ FEATURES

specifically designed for operator  
and jobsite safety.

# STH634A



**TELEHANDLER** 15,873 LBS OPERATING WEIGHT  
74 HP GROSS HORSEPOWER  
34' 1" MAX LIFT HEIGHT

## TECHNICAL SPECIFICATIONS

### MACHINE DATA

Operating Weight	15,873
Hydraulic Flow	16 GPM
Travel Speed	17 MPH
Tire Size	15.00-19.5 PR
Turning Radius	14'0"

### ENGINE DATA

Manufacturer	Deutz
Model	TD2.9
Rated Engine Speed	2,300 RPM
Rated Power	74 HP
Maximum output torque	192 ft lbs
Maximum torque speed	1800 RPM

### ELECTRICAL SYSTEM

Battery	24v
---------	-----

### LIFTING PERFORMANCE

Maximum lift height	34'1"
Maximum forward reach	23'0"
Maximum lift capacity	10,000 lbs
Lift capacity at maximum reach	300 lbs
Lift capacity at maximum lift	3,501 lbs

### BOOM CYCLE TIMES

Raise	11 seconds
Lower	09 seconds
Extend	14 seconds
Retract	14 seconds

# SAFETY PRIORITIZED

We design for safety first. Operators get secure handrails, steps, and anti-slip on surfaces, OEM ROPS/FOPS certified cab with multiple exit points. A three-inch seatbelt, emergency shut-off and fire extinguisher add protection inside, while a review camera, alarms, and 360° lighting enhance awareness for a safer jobsite.

\*Operating weight is for the STH634A with no attachments, and standard stick.  
SANY America Inc. reserves the right to change these specifications at any time  
without prior notification. ©2026 SANY America Inc. HEXPS265TH634A001

# TELEHANDLER STH634A

**15,873 LBS** OPERATING WEIGHT  
**74 HP** GROSS HORSEPOWER  
**34' 1"** MAX LIFT HEIGHT

## STANDARD FEATURES

### ENGINE

Exhaust after-treatment (DPF only, NO DEF)

### POWERTRAIN

Powershift transmission

Planetary limited slip axles

Full-time 4 wheel drive

Gear selector lever (Steering-column)

Manual shift

Service brake, 4-wheel, wet-disc

Parking brake, spring applied - hydraulic release

Cushioned solid tires

### HYDRAULIC

Full variable load-sensing system

Single electric over hydraulic joystick control

Axial piston pump

Hydraulic quick coupler lines for auxiliary hydraulics

Self-leveling forks

Three driver-selectable steering modes (2W, 4W, 4W-Crab)

### CABIN

ISO certified ROPS/FOPS Canopy

Emergency hammer (closed cabin only)

### CABIN (CONTINUED)

Rubber isolated cab mounts

Digital instrument display

Mechanical suspension seat

Seat belt, 3" retractable

Dual armrests

2-speed fan

Dedicated display for rear-view camera

### ELECTRICAL

24v electrical system

2-12 volt batteries

### PRODUCTIVITY

Back up camera

Reverse sensing system

Full 4-wheel fender package

LED work lights on cab and boom

Flashing beacon

Lifting hook

Frame leveling 10 degrees side to side

## PERFORMANCE SPECIFICATIONS

### PERFORMANCE

Maximum Lift Capacity 6,000 lbs

Lift Capacity at Maximum Height 4,000 lbs

Lift Capacity at Maximum Reach 1,000 lbs

Boom (Raise / Lower) 11 / 9 seconds

Boom (Extend / Retract) 14 / 14 seconds

Frame Leveling +/- 10 degrees

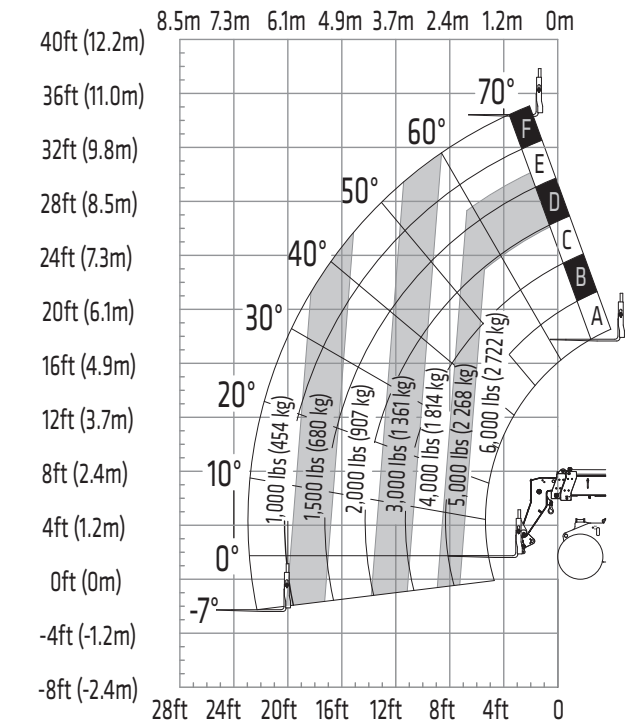
Maximum Drive Speed 17 mph

Outside Turning Radius (4WS) 13' 9"

Auxiliary Hydraulic Flow 16 gpm

Auxiliary Hydraulic Pressure 2,466 psi

Standard Tire Size 15.00 / 19.5



### CAPACITIES

Gross Power 74 hp

Torque 192 lbf-ft

Electrical System 24 volt

Hydraulic Tank Capacity 18 gal

Hydraulic System Capacity (with Tank) 34 gal

Fuel Tank Capacity 36 gal

### COMPONENTS

Transmission Dana VDT12000

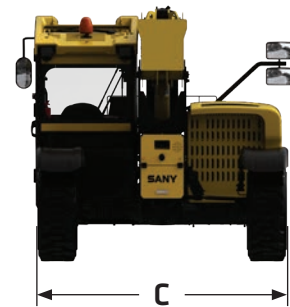
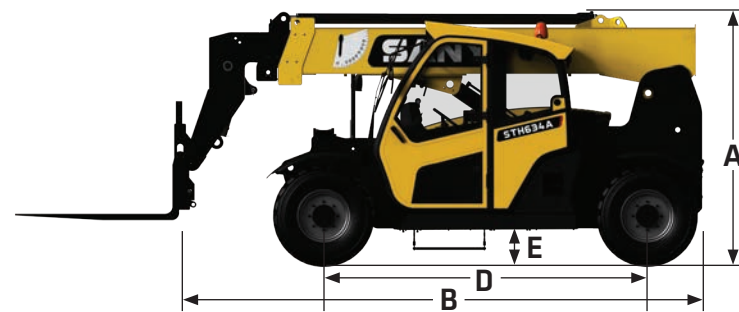
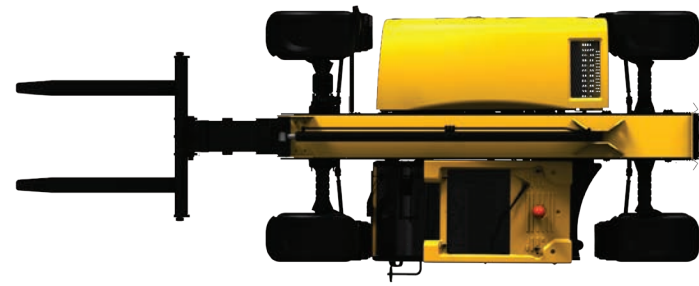
Axles F / R Dana 212 / 212

Hydraulic Pump Casappa Load Sense Piston Pump

Hydraulic Manifold Parker

In the interest of continual equipment development, SANY America Inc. reserves the right to change these specifications at any time without prior notification.  
 ©2026 SANY America Inc. HEXPS26STH634A001

In the interest of continual equipment development, SANY America Inc. reserves the right to change these specifications at any time without prior notification.  
 ©2026 SANY America Inc. HEXPS26STH634A001



# CONNECTED, INFORMED, IN CONTROL TECHNOLOGY

## CONNECTED EVI TELEMATICS

EVI is SANY's proprietary telematics platform and is available through your local dealer on excavators. This dashboard lets you track and geofence the machine, view reports on consumption and run time, monitor error codes and manage your SANY fleet—all with more features continually being launched to keep you connected and in control.

### DIMENSIONS

Maximum Lift Height	34' 1"
Maximum Forward Reach	23'
A Height, Stowed	7' 11"
B Length, Stowed (without Forks)	17' 1"
C Width	7' 11"
D Wheelbase	10' 4"
E Ground Clearance (Center)	1' 2"
Ground Clearance (Axle)	1'
Weight	15,873 lbs

In the interest of continual equipment development, SANY America Inc. reserves the right to change these specifications at any time without prior notification.  
©2026 SANY America Inc. HEXP5265TH634A001



\*Warranty applies to 2026 Crane, Telehandler, Grader and Roller models only.

SANY America Inc. 318 SANY Way  
Peachtree City, Georgia 30269  
470.552.SANY sanyamerica.com



sanyamerica.com ||| STH634A



# DO EVERYTHING

Perform hundreds of tasks and view important data all through one display.

sanyamerica.com ||| STH634A 13

# BUILT AROUND THE OPERATOR

**12**  
**POINTS**

of seat adjustability plus heated and cooled functions.

## DESIGNED FOR COMFORT ALL SHIFT LONG

This spacious cab is built for comfort and intuitiveness with safety and ergonomics at the core. The seat offers 12 adjustment points to achieve the ideal position plus heated and cooled functions for all-day comfort. SANY's E-panel places common functions within easy reach and the touchscreen display serves as the control hub. Upgraded HVAC keeps the cab comfortable in any weather, while Bluetooth connectivity and improved noise isolation allow clear hands-free calls. Large glass panels maximize visibility of the work area, helping operators stay comfortable and productive throughout the shift.



### CUSTOM OPERATOR ERGONOMICS

The mechanically adjustable seat puts the operator in command, allowing quick alignment with the joystick and foot pedals. The result is confident control and a comfortable, natural working position that keeps operators productive and focused all day long.

### OPTIMAL JOBSITE AWARENESS

On cab models, large glass panels, expansive side windows, and an integrated backup camera provide a clear, commanding view of the surroundings. Combined with side-view mirrors, operators can maneuver confidently and safely across the jobsite.

# INTENTIONALLY ENGINEERED FOR SERVICE

## UPTIME IS OUR PRIORITY

With fast diagnostics, streamlined repairs and software tools for remote support it's easy to keep your SANY excavator running strong. Our local dealer network, stretching across North America, provides quick response and maximizes your productivity.

## DEDICATED TO SUPPORT

We're expanding our U.S. footprint with local engineering, quality assurance and service teams—backed by a multi-year investment in support, training, and parts.

## PARTS ON THE SHELF READY TO SHIP

We continually expand parts inventory across our major North American distribution centers and improve forecasting to keep high-demand components in stock. This longterm strategy ensures critical parts are ready to ship when they're needed most.

## EASE OF ACCESS

Its spacious compartments offer ample room for tools, filters, and components, ensuring efficient inspections and replacements that minimize downtime on the job site.

## FAST DAILY PRE-CHECKS

Machines are designed so operators can safely and easily inspect critical systems—mostly from the ground—for quick visual and manual checks.



# WE'VE GOT YOUR BACK

At SANY, we see every customer as a relationship whose success is directly tied to ours. We focus on keeping you productive, because when your machines are running, your business is winning. Our warranty support, faster claim approvals, not just our equipment. Your feedback fuels continuous improvement—real updates to software, hydraulics, and performance through close collaboration with key suppliers. With expanding U.S. support, trained technicians, ongoing investments, and stronger parts availability, we stay by your side so your business can keep moving forward.

# CUSTOMERS FIRST ALWAYS

At SANY America, everything begins with you. We design machines that make your work safer, more efficient, and more profitable—and we stand behind them with U.S.-based support you can count on. From ergonomic cabs and superior visibility to quick daily checks and dependable uptime, every feature is engineered around real operator needs and real jobsite demands. Your feedback directly drives our product improvements, accelerating software updates, hydraulic refinements, and long-term durability enhancements. With expanding American facilities, local engineering and service teams, certified technicians, and three parts distribution centers nationwide, we operate as your committed business partner—focused on your success today and every day ahead.

## FINANCING THAT WORKS AS HARD AS YOU DO

Smart financing that makes owning SANY equipment faster, easier, and affordable.

- **Quick approvals – many customers approved in under 5 minutes**
- **Simple mobile app for secure document signing and easy payment management**
- **Flexible terms and competitive promotions, including 0% for 60 months**
- **Faster approvals for repeat customers to keep your fleet growing**
- **Top-rated experience with a 4.95 out of 5 Trustpilot score**

Financing with SANY is built to support your business growth every step of the way.

## INDUSTRY'S **STRONGEST** STANDARD WARRANTY

SANY America delivers the most comprehensive standard warranty in the industry—protecting your investment from day one.

- **5 years / 5,000 hours of full machine coverage included with every telehandler**
- **Lower total operating risk and fewer unexpected costs over machine life**
- **Confidence in long-term durability backed by factory engineering and testing**
- **Stronger coverage than leading OEM competitors – standard, not add-on**

Choosing SANY means choosing equipment built to work—and a partner committed to standing behind your success.

## TOTAL COST OF OWNERSHIP

SANY machines are engineered to deliver a stronger return on investment by lowering the true cost of ownership over the life of your equipment.

- **Fuel-efficient performance reduces operating costs every hour the machine runs**
- **Extended service intervals minimize downtime and maintenance expense**
- **Parts cost management keeps replacement and wear items affordable**
- **High resale value helps protect your investment over time**
- **More standard features from the factory reduce the need for costly add-ons**

Every detail is designed to help you earn more, spend less, and get maximum value from every machine you own.



# SANY

**INDUSTRY'S  
STRONGEST  
STANDARD  
WARRANTY** | **3-YEAR  
3,000 HOURS**

\*Warranty applies to 2026 Crane, Telehandler,  
Grader and Roller models only.

**SANY America Inc.**

**318 SANY Way**

**Peachtree City | GA 30269**

**T | 470-552-SANY**

**BRHEX265TH634A001**

**sanyamerica.com**

In the interest of continual equipment development,  
SANY America Inc. reserves the right to change these  
specifications at any time without prior notification.

© 2026 SANY America Inc.

