



**SANY**

**FORKLIFT TRUCKS**

**FULLY LOADED  
IS THE NEW  
STANDARD**

**Easy to Operate,  
Easy to Service**

**Designed for Safety  
and Reliability**

**Backed by a Standard  
3-Year/6,000-Hour  
Warranty**





## WHY SANY FORKLIFT TRUCKS?

# DURABLE. RELIABLE. PRODUCTIVE.

When you want agile, strong machines to move materials safely and efficiently, SANY's forklift family gets the job done. Our forklift trucks are offered in a variety of sizes and load capabilities ready to tackle any challenges thrown at them. Operators love our forklifts' easy-to-manage controls, comfortable cabins and reverse cameras. And as always, standard components like Cummins, Dana, Kessler and Parker keep SANY's forklifts going strong.

**INDUSTRY'S  
STRONGEST  
STANDARD  
WARRANTY** | **3-YEAR  
6,000 HOURS**





## PROUDLY MADE FOR AMERICA

Since 2006, SANY America has been investing in and growing across the U.S. From our 272-acre facility in Georgia, where we employ over 300 American employees, to our growing dealer network that stretches from Maine to Washington, SANY America is dedicated to building business across America.

SANY forklifts are made for the U.S. with components from brands you trust like Cummins, Dana, Kessler and Parker. Our industry-leading warranty is proof of SANY's durability. With our service network and use of American-made components, SANY proudly shows continuous support to our machines and the people who operate them. SANY America is dedicated to helping American-owned businesses thrive with our commitment to value, performance and service.

### Small 24" Trucks

SCP100A | SCP130A

SCP140A-6 | SCP160A-6

### Mid-Size 48" Trucks

SCP160V4 | SCP250H4

### Large 48" Trucks

SCP300H4 | SCP320H4





SCP100A, SCP130A, SCP140A-6, SCP160A-6,  
SCP160V4, SCP250H4, SCP300H4, SCP320H4

# BECAUSE **SAFETY** IS NOT AN OPTION

When moving heavy loads is your job, safety, strength and performance are musts. That's what makes SANY's fully loaded forklifts the go-to transporters of any fleet. With lifting capacities between 22,000 lbs and 70,400 lbs and high quality components, our productivity is unmatched.

**WE'VE GOT  
YOUR  
BACK**

To provide peace of mind and ensure maximum uptime, SANY backs all its equipment with robust standard warranties. That's our commitment to keeping your fleet running at peak performance. Our network of local dealers will partner with you for routine maintenance and be there for warranty repairs. You can trust SANY to keep you moving, year-round.

**INDUSTRY'S  
STRONGEST  
STANDARD  
WARRANTY** | **3-YEAR  
6,000 HOURS**

## KEY FEATURES ||| FORKLIFT TRUCKS

### SAFETY

LED work light package standard? SANY's got it. On-board fire-suppression system? Also got it. Reverse camera and radar detection sensors? You bet. SANY's forklifts are fully loaded with top-of-the-line safety features.

### EASE OF SERVICE

Ground-level access, central grease points and on-board diagnostics from the cabin display ensures that if your machine needs service, your technician will be in and out in a flash.

### EASE OF OPERATION

With a spacious cab, intuitive controls (joystick or lever) and clearly delineated lines of sight, operators will enjoy a comfortable and safe working environment in SANY's forklifts, ensuring productivity.

### RELIABILITY

We're committed to keeping SANY operators productive, and that starts with protecting critical parts at the design stage. With hydraulic coolers extending the life of SANY forklifts' components, the result is supercharged performance from an ultra-reliable machine.

### ENERGY EFFICIENCY

With load-sensing hydraulics in the SCP160V4, SCP250H4, SCP300H4, and SCP320H4, power is drawn from the engine as efficiently as possible.

### ROBUST WARRANTY

To provide peace of mind and ensure maximum uptime, SANY forklifts are backed by a 3-year/6,000-hour industry-leading standard warranty.

### COMPONENT BRANDS

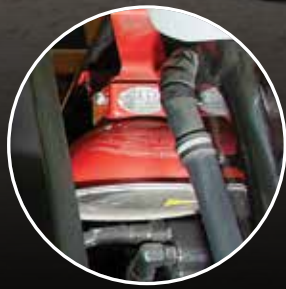




# FULLY LOADED IS THE NEW STANDARD



**1. REVERSE CAMERA  
AND RADAR DETECTION  
SENSORS**



**2. DRY CHEMICAL FIRE  
SUPPRESSION SYSTEM**



**3. POWER TILTING CAB**



**4. CENTRALIZED  
GREASING POINTS  
FOR THE MAST AND  
STEERING PIVOT PIN**



STANDARD FEATURES ||| SCP100A, SCP130A, SCP140A-6, SCP160A-6

4



**5. PRESSURE TRANSDUCER TO DISPLAY LOAD BEING PICKED UP**



**6. COOLDOWN PERIOD TO ALLOW TURBO TO COOL BEFORE SHUTTING DOWN**



**7. ON-BOARD DIAGNOSTICS**



**8. LIFT OVERRIDE PROTECTION**



# FULLY LOADED IS THE NEW STANDARD



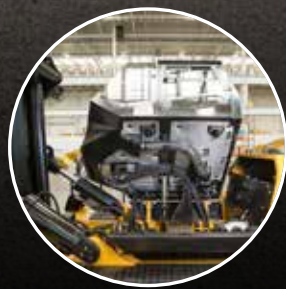
**1. REVERSE CAMERA  
AND RADAR DETECTION  
SENSORS**



**2. LED WORK LIGHT  
PACKAGE**



**3. DRY CHEMICAL FIRE  
SUPPRESSION SYSTEM**



**4. POWER TILTING CAB**





6

4

5

8



**5. LOAD SENSING HYDRAULICS**



**6. PRESSURE TRANSDUCER TO DISPLAY LOAD BEING PICKED UP**



**7. COOLDOWN PERIOD TO ALLOW TURBO TO COOL BEFORE SHUTTING DOWN**



**8. DUAL HYDRAULIC TANKS**



# FULLY LOADED IS THE NEW STANDARD



**1. REVERSE CAMERA AND RADAR DETECTION SENSORS**



**2. DRY CHEMICAL FIRE SUPPRESSION SYSTEM**



**3. POWER SLIDING CAB (SLIDES TO THE RIGHT)**



**4. LOAD SENSING HYDRAULICS**





4

5



**5. PRESSURE TRANSDUCER TO DISPLAY LOAD BEING PICKED UP**



**6. COOLDOWN PERIOD TO ALLOW TURBO TO COOL BEFORE SHUT DOWN**

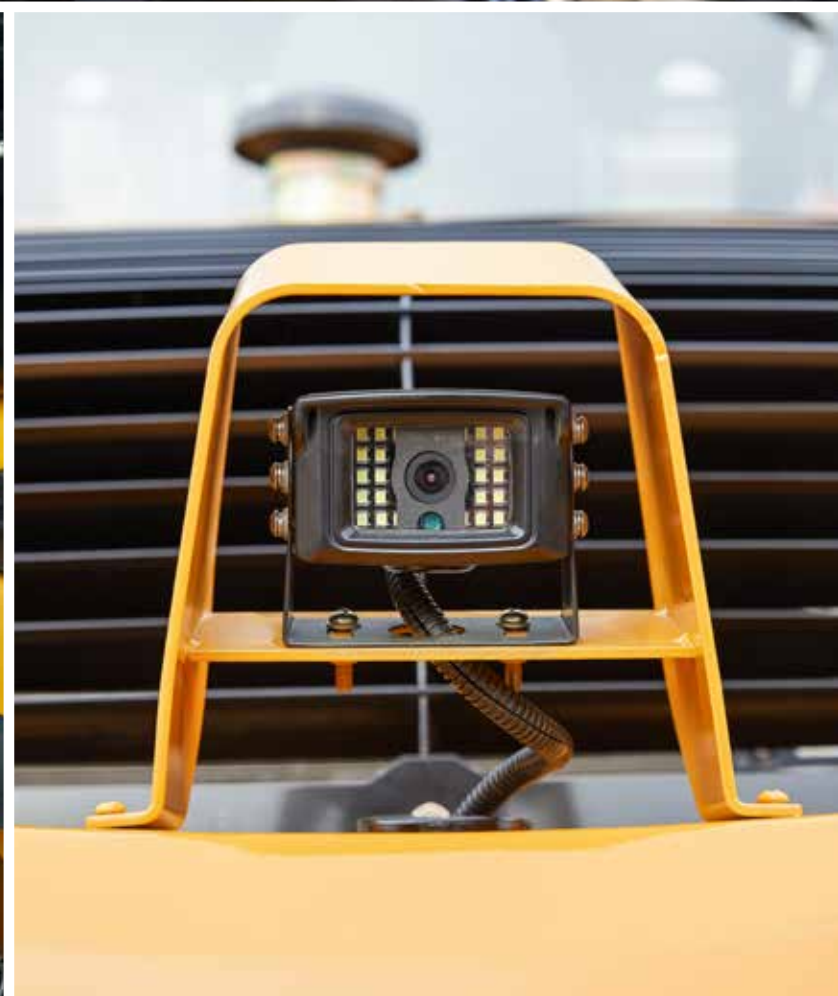


**7. LED WORK LIGHT PACKAGE**



**8. DUAL HYDRAULIC TANKS**







# A SAFE, PRODUCTIVE SPACE FOR OPERATORS

Ensuring a safe, comfortable environment that keeps operators alert is our goal. We've met that challenge with spacious, climate controlled cabs, cloth suspension seats and intuitive controls. From there, operators can fully maximize the day's work by achieving optimal productivity with SANY's outstanding lifting performance.

## SAFETY COMES STANDARD

Features like rear view cameras, object detection systems, on-board fire-suppression systems, lift override and bright LED work light packages are part of what we mean when we say, "safety comes standard." Safety isn't something you should have to pay extra to achieve. It's part of the value we deliver. Operators can rest easy knowing SANY has their back.

## DESIGN TO PERFORM

Delivering pure power through the Cummins engine, Dana transmission, and a heavy-duty, robust drive axle means operators receive best in class drawbar performance day in and out. Power without precision is meaningless though, so SANY designed the joysticks and hydraulic valves on all forklift trucks for the smoothest response which provides the utmost refinement and precision to gently maneuver even the heaviest load. These trucks are also designed so that each operator can fine tune the calibration of the joysticks and inching pedal to their liking for customized traction and hydraulic control.

MODEL	SCP100A	SCP130A	SCP140A-6	SCP160A-6	SCP160V4	SCP250H4	SCP300H4	SCP320H4
LOAD CENTER 24"	•	•	•	•				
LOAD CENTER 48"					•	•	•	•
CUMMINS QSB 4.5	•	•						
CUMMINS QSB 6.7			•	•	•	•	•	•
DANA TE 10	•	•	•	•				
DANA TE 17					•	•	•	•
POWER TILTING CAB	•	•	•	•	•	•		
POWER SLIDING CAB							•	•



**FORKLIFT TRUCKS**

# **SERVICE, VALUE & SIMPLE OPERATION**

## **EASE OF SERVICE**

When we say that SANY machines are built to endure, we're really talking about service. SANY equipment is intentionally designed to be easily and efficiently serviced with features such as wide compartment doors and ground-level access to make maintenance more efficient. Ease of service means back in service.

## **EVERYTHING YOU NEED**

SANY machines are the total package, and our forklifts are no exception. We go beyond safety, strength and performance to give you agile, fully loaded machines that give their all every day on the job, just like you. Whether it's lifting lumber or 20' storage containers, SANY forklifts are workhorses.

## **JOBS DONE WELL, DONE QUICK, DONE SAFE**

Machines and operators work hand in hand to get the job done. That's why SANY machines are designed with operators in mind. With efficiency, comfort, and safety built into the cabin and the machine itself from the design level on down, the SANY forklift family will be just what your outfit needs.

## **VALUE DELIVERED**

Simply put, these machines are the MVP of any lumber, steel, pre-cast warehouse or yard. You'll get stellar performance and value out of your SANY forklift trucks. It's important to us to deliver the highest value to you, so we back all of our machines with the industry's strongest standard warranties, load them with standard features and make them affordable so you don't have to compromise. Our machines are easy to operate, easy to maintain and built to be durable and reliable.

**SANY**

**FULLY LOADED IS THE  
NEW STANDARD**

**SANYAMERICA.COM**







A photograph of three stacked SANY shipping containers. The top container is light blue with 'SANY' written in red. The middle container is white. The bottom container is dark blue with 'SANY' and 'P&' written in red. A forklift is partially visible on the right side of the containers.

# SANY

**INDUSTRY'S  
STRONGEST  
STANDARD  
WARRANTY** **3-YEAR  
6,000 HOURS**

\*Warranty applies to 2023 Forklift,  
Container Handler and Reach Stacker models only.

**SANY America Inc.**  
318 SANY Way  
Peachtree City | GA 30269  
| T | 470-552-SANY

PORTBRFLY22FLT001

**sanyamerica.com**

In the interest of continual equipment development,  
SANY America Inc. reserves the right to change these  
specifications at any time without prior notification.

© 2022 SANY AMERICA INC.

