



SANY

DRILL RIG

**FULLY LOADED
IS THE NEW
STANDARD**

**Great Productivity,
Durability & Reliability**

Simple to Operate

Powerful Rotary Heads

**Backed by a Standard
2-Year/2,000-Hour
Warranty**



**WHY SANY
DRILL RIGS?**

POWERFUL. PRODUCTIVE. RELIABLE.

Maximized uptime is a top priority for you and for us. With common, trusted, high performing components like Cummins engines, Rexroth and Kawasaki motors and Kawasaki pumps will keep you running. With our powerful crowd cylinder or winch, you can easily drill through hard material to make the most of the day's work. Operators appreciate the easy to navigate and intuitive 10.4 inch touchscreen display and technicians like the ability to self diagnose issues with on-board diagnostics. Designed to perform and built to endure, SANY backs all our drill rigs with the Industry's Strongest Standard Warranty of 2 years or 2,000 hours.

**INDUSTRY'S
STRONGEST
STANDARD
WARRANTY** | **2-YEAR**
2,000 HOURS



PROUDLY MADE FOR AMERICA

Since 2006, SANY America has been investing in and growing across the U.S. From our 272-acre facility in Georgia, where we employ over 300 American employees, to our growing dealer network that stretches from Maine to Washington, SANY America is dedicated to building business across America.

We protect your investment by featuring top-shelf components by brands you trust like Cummins and Kawasaki. Our industry-leading warranty is proof of SANY's durability. With our service network and use of American-made components, SANY proudly shows continuous support to our machines and the people who operate them.

SANY America is dedicated to helping American-owned businesses thrive with our commitment to value, performance and service.

MODEL SR125MV

MAX. DRILLING
DIAMETER
4' 11"

MAX. DRILLING
DEPTH
134' 6"

RATED OUTPUT
TORQUE
95,883 lbf·ft

ENGINE POWER
**200 hp /
2,200 rpm**

MODEL SR285MV

MAX. DRILLING
DIAMETER
7' 3"

MAX. DRILLING
DEPTH
308'

RATED OUTPUT
TORQUE
210,205 lbf·ft

ENGINE POWER
**450 hp /
1,800 rpm**



SR125MV, SR285MV

DESIGNED TO **DOMINATE** THE JOBSITE

Fast winch speeds, high speed spinoff (SR285MV) and auto return to center get you back on the hole faster so that you can optimize productivity throughout the day. Top that off with the safety features that abound like the winch camera (SR285MV), blind side and backup cameras, cab protection screens, high visibility cab and counterweight and swing alert lights.

Easy to transport so you can get the most out of the daylight, the SR125MV moves on a single truck and is ready to go to work when it arrives on site. The SR285MV is transported on three trucks and typically assembles in under a day.

**WE'VE GOT
YOUR
BACK**

To provide peace of mind and ensure maximum uptime, SANY backs all its equipment with robust standard warranties. That's our commitment to keeping your fleet running at peak performance. We support you for routine maintenance and will be there for warranty repairs. You can trust SANY to keep you moving, year-round.

**INDUSTRY'S
STRONGEST
STANDARD
WARRANTY** | **2-YEAR***
2,000 HOURS

*Warranty applies to 2023 Drill Rig models only.



QUALITY

SANY drill rigs are made for America with trusted and time-tested Cummins engines and a well integrated design to deliver power, performance and reliability. Each American model has undergone 500 hours of testing with over 25 different tests for things like durability and stability.

VERSATILITY

Multiple removable mast sections allow operators to switch from long mast to shorter mast configurations. They can also convert from Kelly drilling to CFA mode for augercast, displacement pile or soil mixing.

COMFORT

The spacious, temperature-controlled cabs with air suspension, cloth seats and intuitive controls are designed to keep operators comfortable, alert and engaged.

POWER

Reaching depths of 134 feet for the SR125MV and 308 feet for the SR285MV, our drill rigs are productive and powerful.

AUTOMATIC FEATURES

To ensure accuracy, our drill rig models can automatically return to center, swing back, spin off and shake debris (SR125MV only), lift/lower mast, and sense and prevent slack in the winch rope. There's also drill cruise functionality through the joystick to reduce operator wrist fatigue.

INDUSTRY-LEADING WARRANTIES

To provide peace of mind and ensure maximum uptime, SANY's drill rigs are backed by a 2-year/2,000-hour industry-leading standard warranty.

SUPPORT

SANY offers domestic OEM direct service on all drill rigs with fast response times and readily available technicians.

FULLY LOADED IS THE NEW STANDARD



5

7

2

3



1. ELECTRICALLY CONTROLLED, POSITIVE FLOW HYDRAULIC SYSTEM



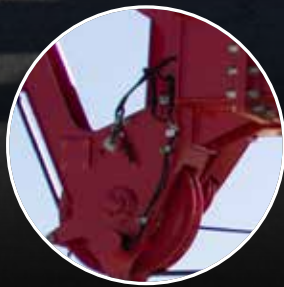
2. POWERFUL CUMMINS ENGINE



3. SECTIONAL MAST ON THE SR285MV



4. 10.4" TOUCHSCREEN HD DISPLAY



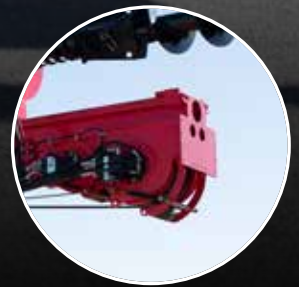
5. CENTRALIZED LUBRICATION SYSTEM



6. AUTOMATIC DRILLING, DUMPING AND SHAKING THROUGH JOYSTICK



7. BACKUP AND RIGHT SIDE SAFETY CAMERA AND SR285MV HAS AN ADDITIONAL MAIN WINCH CAMERA



8. FAST WINCH SPEEDS



THE SMOOTH, PRECISE CONTROL COMES STANDARD

SANY drill rigs have intelligent proportional controls that provide smooth, consistent operation. This provides operators tactile engagement with the soil conditions, allowing for more precise and efficient movements and faster cycle time.

In-display diagnostics provide immediate failure response, allowing technicians to quickly fix issues. Avoiding time-consuming mistakes creates long-term increases in uptime and productivity.

WELCOME TO THE COMFORT ZONE

With one of the most spacious cabs in the industry, operators find they have room to move. And moving is easy thanks to SANY's well-designed cab layout. Every control an operator needs is right there in front of them, including the push button start. Ergonomic joysticks and easy-to-reach pedals make smooth operation a breeze. From their temperature-controlled cab and elevated, air suspension cloth seat, operators can maintain comfort, high visibility and productivity throughout the work day. With on-board diagnostics, technicians can quickly assess and address issues. Nothing is over-engineered or complicated, either. Every SANY drill rig is simple to operate. Part of lowering the learning curve is increased familiarity across the drill rig family.

SAFETY

Safety is our top priority, so we've added driving alarms to alert workers before drill rig movement. Rear view and blind side cameras give the operator enhanced visibility of the surrounding area. The bright LED work light package, including a light on the mast and winch of the SR285MV, on the exterior of the drill rigs provide visibility in low-light conditions. A ground-accessible emergency cutoff switch on the SR285MV completely shuts down the machine in case of emergency. Protective screens guard the cab from falling debris. Included with the working platforms is a safety railing to prevent falls during maintenance. Similar railings are included on top of the machine as well.

| MODEL | SR125MV | SR285MV |
|---|---------|---------|
| CYLINDER FEED | • | |
| WINCH FEED | | • |
| CUMMINS ENGINE | • | • |
| CFA / DISPLACEMENT PILE | • | • |
| HIGH SPEED SPINOFF ROTARY HEAD (OPTIONAL) | | • |
| 10.4" HD TOUCHSCREEN DISPLAY | • | • |
| SECTIONAL MAST FOR SHORTER OR LONGER CONFIGURATIONS | • | • |
| INTERLOCKING KELLY BAR | • | • |
| CASING CONNECTION | • | • |
| WINCH CAMERA | | • |

SERVICE, VALUE & SIMPLE OPERATION

EASE OF SERVICE

When we say that SANY machines are built to endure, we're really talking about service. SANY equipment is intentionally designed to be easily and efficiently serviced with features such as wide compartment doors and ground-level access to make maintenance more efficient. Because ease of service means back in service.

OPERATOR PREFERRED

With productivity, ease of operation, and safety at the forefront of our design, these are the ultimate drill rigs. They allow operators a higher level of performance and reliability. The learning curve is low because these machines are intuitive allowing new operators to get straight to work with confidence. They have a comfortable cab to always keep them engaged and high visibility of the jobsite.

BUILT TO ENDURE

These drill rigs are more than ready to withstand the pressures of the job. That's why all SANY drill rigs are backed by the industry's strongest standard warranty at 2 years/2,000 hours.

LOW-COST FINANCING

With SANY Capital, you can take advantage of a network of lenders offering different types of financing programs to meet your requirements when purchasing SANY equipment. It's a more flexible way to get heavy equipment for your business with customized financing solutions. So, go ahead, pick out the SANY equipment you need to tackle your next big project. And rest easy knowing that SANY Capital is standing by to make sure your financing process is always fast, simple, and convenient. SANY Capital and its lender partners stand behind you with 100% financing options covering your entire equipment purchase, including attachments, delivery, and taxes.

The SANY logo consists of the word "SANY" in a bold, white, sans-serif font, centered within a red rectangular background.

**FULLY LOADED IS THE
NEW STANDARD**

SANYAMERICA.COM



SANY

**INDUSTRY'S
STRONGEST
STANDARD
WARRANTY** | **2-YEAR***
2,000 HOURS

*Warranty applies to 2023 Drill Rig models only.

SANY America Inc.
318 SANY Way
Peachtree City | GA 30269
| T | 470-552-SANY

BRFLY23DRILLRIG001

sanyamerica.com

In the interest of continual equipment development, SANY America Inc. reserves the right to change these specifications at any time without prior notification.

© 2023 SANY AMERICA INC.

