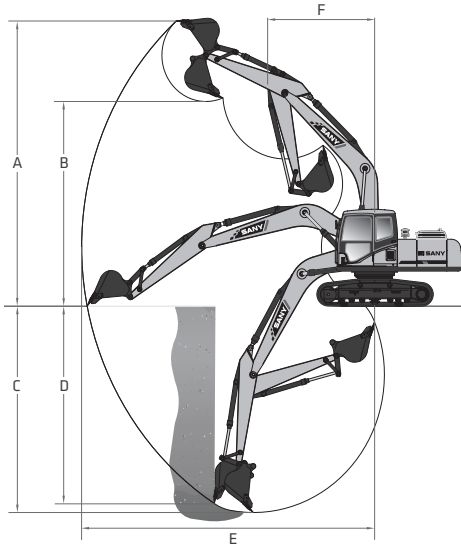


PRODUCT SPECIFICATIONS MEDIUM EXCAVATOR || SY335C LC

WORKING RANGE



WORKING RANGE

Boom Length	20' 2"	6 150 mm
Stick (Arm) Length	10' 6"	3 200 mm
A Maximum Digging Height	34' 5"	10 497 mm
B Maximum Dumping Height	24' 2"	7 359 mm
C Maximum Digging Depth	22' 4"	6 815 mm
D Maximum Vertical Digging Depth	19'	5 800 mm
E Maximum Digging Reach	35' 8"	10 870 mm
F Minimum Swing Radius	13' 1"	4 000 mm

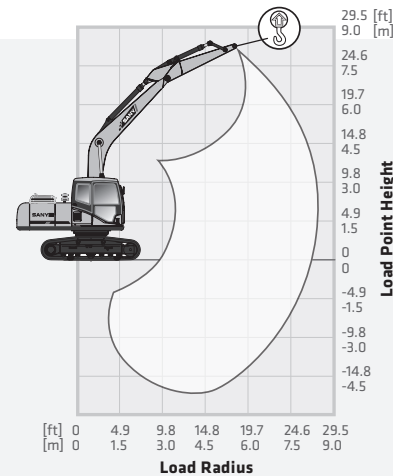
DIGGING PERFORMANCE

Boom Length	20' 2"	6 150 mm
Stick (Arm) Length	10' 6"	3 200 mm
Bucket Breakout Force (ISO)	45,861 lbf	204.0 kN
Stick (Arm) Digging Force (ISO)	34,396 lbf	153.0 kN

LIFTING PERFORMANCE

Standard 20' 2" (6 150 mm) Boom
Standard 10' 6" (3 200 mm) Stick
Standard 2' 8" (800 mm) Track Shoes
No Bucket

Ratings are based on ISO 10567:2007. Lift capacity does not exceed 75% of tipping load with the machine on firm, level ground or 87% of hydraulic lifting capacity.



LOAD RADIUS	4.9 FT 1.5 M		9.8 FT 3.0 M		14.8 FT 4.5 M		19.7 FT 6.0 M		24.6 FT 7.5 M		MAXIMUM		ft mm
LOAD POINT HEIGHT													
24.6 ft 7.5 m											6,929 lbs 3 143 kg	6,929 lbs 3 143 kg	20.6 ft 6 275 mm
19.7 ft 6.0 m											6,929 lbs 3 143 kg	6,929 lbs 3 143 kg	24.2 ft 7 360 mm
14.8 ft 4.5 m							19,350 lbs* 8 777 kg*	19,350 lbs* 8 777 kg*			6,832 lbs 3 099 kg	6,136 lbs 2 783 kg	26.3 ft 8 025 mm
9.8 ft 3.0 m					29,324 lbs* 13 301 kg*	23,839 lbs 10 813 kg	22,218 lbs* 10 078 kg*	15,898 lbs 7 211 kg			7,015 lbs 3 182 kg	5,600 lbs 2 540 kg	27.5 ft 8 370 mm
4.9 ft 1.5 m					34,158 lbs* 15 494 kg*	22,280 lbs 10 106 kg	24,842 lbs* 11 268 kg*	15,108 lbs 6 853 kg			7,454 lbs 3 381 kg	5,404 lbs 2 451 kg	27.7 ft 8 435 mm
0 ft 0 m					36,085 lbs* 16 368 kg*	21,533 lbs 9 767 kg	26,431 lbs* 11 989 kg*	14,584 lbs 6 615 kg			8,195 lbs 3 717 kg	5,498 lbs 2 494 kg	27.0 ft 8 230 mm
-4.9 ft -1.5 m			28,526 lbs* 12 939 kg*	28,526 lbs* 12 939 kg*	35,523 lbs* 16 113 kg*	21,358 lbs 9 688 kg	22,622 lbs 10 261 kg	14,361 lbs 6 514 kg			9,063 lbs 4 111 kg	5,959 lbs 2 703 kg	25.4 ft 7 730 mm
-11.5 ft -3.5 m			44,924 lbs* 20 377 kg*	44,924 lbs* 20 377 kg*	32,769 lbs* 14 864 kg*	21,555 lbs 9 777 kg	24,908 lbs* 11 298 kg*	14,434 lbs 6 547 kg			11,014 lbs 4 996 kg	7,266 lbs 3 296 kg	22.5 ft 6 870 mm
-14.8 ft -4.5 m			35,929 lbs* 16 297 kg*	35,929 lbs* 16 297 kg*	27,022 lbs* 12 257 kg*	22,117 lbs 10 032 kg	20,016 lbs* 9 079 kg*	14,877 lbs 6 748 kg			15,342 lbs 6 959 kg	9,872 lbs 4 478 kg	18.0 ft 5 485 mm

* Indicates load limited by hydraulic lifting capacity.

In the interest of continual equipment development, SANY America Inc. reserves the right to change these specifications at any time without prior notification.
©2023 SANY America Inc. HEXPS235Y335CLC001

SANY America Inc. 318 SANY Way
Peachtree City, Georgia 30269
470.552.SANY sanyamerica.com



PRODUCT SPECIFICATIONS



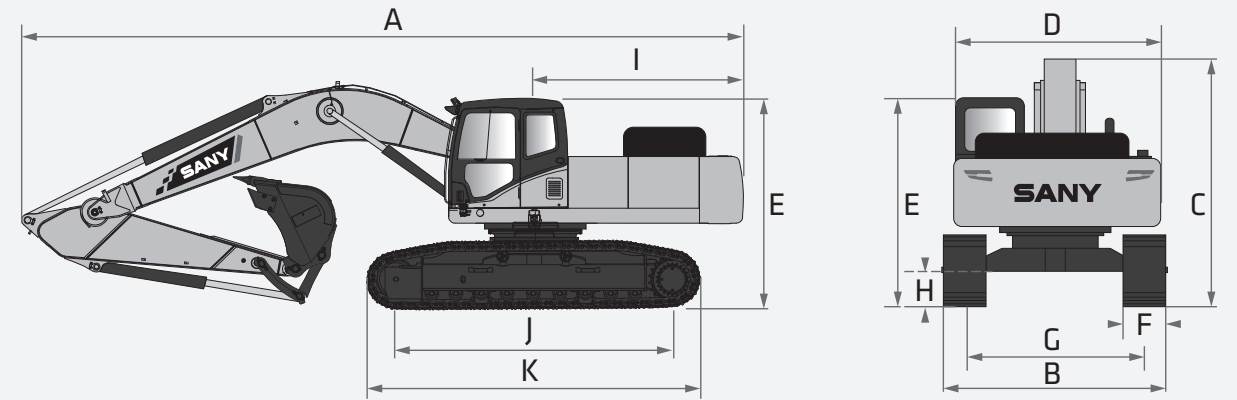
EXCAVATOR

SY335C LC

STANDARD FEATURES

- ➔ Heavy-duty, long undercarriage
- ➔ 1-way and 2-way primary auxiliary and 2-way secondary auxiliary circuits with dedicated auxiliary rotate pump
- ➔ 10.4" touchscreen display
- ➔ Heated air ride seat with adjustable control panels
- ➔ Blind side and rear view cameras
- ➔ Powerful Cummins Engine

280 hp
Gross Power
22' 4"
Dig Depth
74,075 lbs
Operating Weight
45,861 lbs
Bucket Breakout



TECHNICAL SPECIFICATIONS

TECHNICAL SPECIFICATIONS

Operating Weight	74,075 lbs	33 600 kg
Ground Pressure	8.8 psi	60.3 kPa
Engine	Cummins L9 Stage V	
Displacement	598.0 in ³	9.8 L
Engine Power (at rated speed)	280.3 HP	209 kW
Hydraulics	Positive Flow System	
Main Hydraulic Pump	Axial Piston Variable Displacement	
Operating Flow (maximum)	147 gal/min	560 L/min
Operating Pressure (maximum)	4,975 psi	34.3 MPa
Power Boost Pressure (maximum)	5,410 psi	37.3 MPa
Travel Motor	2*Axial Piston Motor w/Parking Brake	
Travel Pressure (maximum)	4,975 psi	34.3 MPa
Travel Speeds (low / high)	2.1 / 3.2 mph	3.4 / 5.2 km/hr
Travel Force (maximum)	55,078 lbf	245.0 kN
Grade Capability (maximum)	35°	
Swing Motor	Axial Piston Motor w/Swing Brake	
Swing Pressure (maximum)	3,989 psi	27.5 MPa
Swing Speed (maximum)	9.0 RPM	
Undercarriage (standard)	Steel Track	
Track Shoe Width (standard)	31"	800 mm
Track Rollers (per side)	9	
Carrier Rollers (per side)	2	

DIMENSIONS

DIMENSIONS

Boom Length	20' 2"	6 150 mm
Stick (Arm) Length	10' 6"	3 200 mm
A Transport Length	35'	10 667 mm
B Transport Width	11' 2"	3 396 mm
C Transport Height	11' 5"	3 470 mm
D Upper Structure Width	10' 4"	3 147 mm
E Blade Height	-	-
F Track Width (standard shoe)	31"	800 mm
G Track Gauge	8' 6"	2 590 mm
H Minimum Ground Clearance	2'	550 mm
I Tail Swing Radius	10' 11"	3 315 mm
J Center Distance of Tumblers	13' 7"	4 140 mm
K Track Length	16' 7"	5 055 mm

SERVICE REFILL CAPACITIES

Fuel Tank Capacity	143 gal	540.0 L
Engine Coolant	13.5 gal	51.0 L
Engine Oil	7.9 gal	30.0 L
Swing Drive	2.8 gal	10.5 L
Final Drive (each side)	2.3 gal	8.5 L
Hydraulic Oil Tank	79.3 gal	300.0 L

*Based on theoretical calculation at max flow with no load. Subject to alterations. In the interest of continual equipment development

SANY America Inc. reserves the right to change these specifications at any time without prior notification. ©2023 SANY America Inc. HEXPS235Y335CLC001

STANDARD AND OPTIONAL EQUIPMENT

s = standard / o = optional

SY335C LC	ENGINE
s	8.9l Cummins (Cummins QSL9 Stage V)
s	Auto-idle
s	Dual-element dry air filter
s	Batteries 24V (2 - 12V)
s	Coolant Expansion tank
s	Electronic engine control
s	Enclosed fan guard
s	Engine coolant to -37 deg. C (-34 deg. F)
s	Fuel filter with water separator
s	Full-flow oil filter
s	Turbocharger with charge air cooler
s	High flow electric clutch actuated fan
s	500-hour engine-oil-change interval
s	70% (35 deg.) off-level capability
s	Engine air precleaner
s	Severe-duty fuel filter
HYDRAULIC SYSTEM	
s	Spring-applied, hydraulically released automatic swing brake
s	Auxiliary hydraulic-flow adjustments through monitor
s	Control pattern change valve
s	Auxiliary hydraulics with 1 and 2-way combination piping for high flow
s	Auxiliary hydraulics with 2- way rotation piping and controls with dedicated pump
s	Auxiliary pilot and electric controls
s	Auto power boost for higher dig performance
s	Quick coupler plumbing and control
UNDERCARRIAGE	
s	Planetary drive with axial piston motors
s	Propel motor shields
s	Spring-applied, hydraulically released automatic propel brake
s	Track guides, front idler and 2 additional per side
s	2-speed travel selection
s	Upper carrier rollers (2) , bottom rollers (9)
s	Sealed and lubricated track chain
s	Triple semi-grouser shoes, 800 mm (32")
s	Undercarriage frame opening guard
BOOM & STICK	
s	Boom 6.15 m (20' 2")
s	Stick, 3.2 m (10' 5")
UPPERSTRUCTURE	
s	Right-hand, left-hand, and counterweight mirrors
s	Vandal lockwith ignition key: Cab door /Service door/ Toolbox/Cab Filter
s	Debris screen in side panel
s	Remote-mounted engine oil and fuel filters
s	Daily fluid level inspection visible from ground
s	Heavy duty triangle channel frame guard
ATTACHMENTS	
s	Convenient grease points
o	Centralized lubrication system
s	Dirt seals on all bucket pins

In the interest of continual equipment development, SANY America Inc. reserves the right to change these specifications at any time without prior notification.
©2023 SANY America Inc. HEXP523SY335CLC001

STANDARD AND OPTIONAL EQUIPMENT

s = standard / o = optional

SY335C LC	ATTACHMENTS CONTINUED
s	Oil-impregnated bushings
s	Reinforced resin thrust plates
o	Quick coupler
o	Buckets: Heavy duty / Heavy-duty high capacity / Side cutterand teeth
OPERATOR'S STATION	
s	ROPS certified cab (ISO 12117-2)
s	Adjustable independent-control positions (levers-to-seat, seat-to-pedals)
s	AM/FM radio with USB charging and Bluetooth® connectivity
s	High performance auto climate control/air conditioner/heater/pressurizer
s	Built-in Operator Manual storage compartment and manual
s	12V/24V outlets
s	Deluxe heated air suspension cloth seat with adjustable armrests
s	Heavy duty rubber floor mat
s	Front windshield wiper with intermittent speeds and auto shut off when front window is open
s	Illuminated gauge: diesel exhaust fluid, engine coolant, and fuel levels
s	Horn, electric
s	Hour meter, electric
s	Hydraulic shutoff lever, all controls
s	Interior light
s	Large cup holder
s	Digital power mode selection: 3 power modes- low, standard, and high
s	Digital tool selection: bucket, shear, hammer, etc. saving up to 10 tools each in display
s	Fully adjustable auxiliary flow circuits and pressure from display
s	Multifunction color LCD monitor with: Diagnostic capability / Multiple-language / Maintenance tracking / Clock
s	System monitoring with alarm features: Auto-idle indicator, engine air cleaner restriction indicator light, engine check, engine coolant temperature indicator light with audible alarm, engine oil pressure indicator light with audible alarm, low-alternator-charge indicator light, low-fuel indicator light, low DEF indication with audible alarm, fault code alert indicator, fuel-rate display, wiper-mode indicator, work-lights-on indicator, and work-mode indicator
s	Motion alarm with cancel switch (conforms to SAE J994)
s	Overload alarm and adjustable lift pressure threshold adjustment
s	Proportional auxiliary switches on joystick
s	Seat belt, 2", Retractable
s	Transparent overhead hatch
s	Heated or cooled food/beverage storage
s	USB charging port
o	Protection screens for cab front, rear, and side
ELECTRICAL	
s	60-amp alternator
s	Ground level electrical disconnect (lockout tag out)
s	Blade-type multi-fused circuits
s	Positive-terminal battery covers
s	Rearview camera & Right sideview camera
s	One touch machine start
LIGHTS	
s	Work lights: 8 High power LED - 2 mounted on boom, 2 mounted on top of Cab, 1 mounted under step on right side of machine, 1 side of machine, and 1 facing rear.



*Warranty applies to 2023 Excavator and Wheel Loader models only.

sanyamerica.com



In the interest of continual equipment development, SANY America Inc. reserves the right to change these specifications at any time without prior notification.
©2023 SANY America Inc. HEXP523SY335CLC001