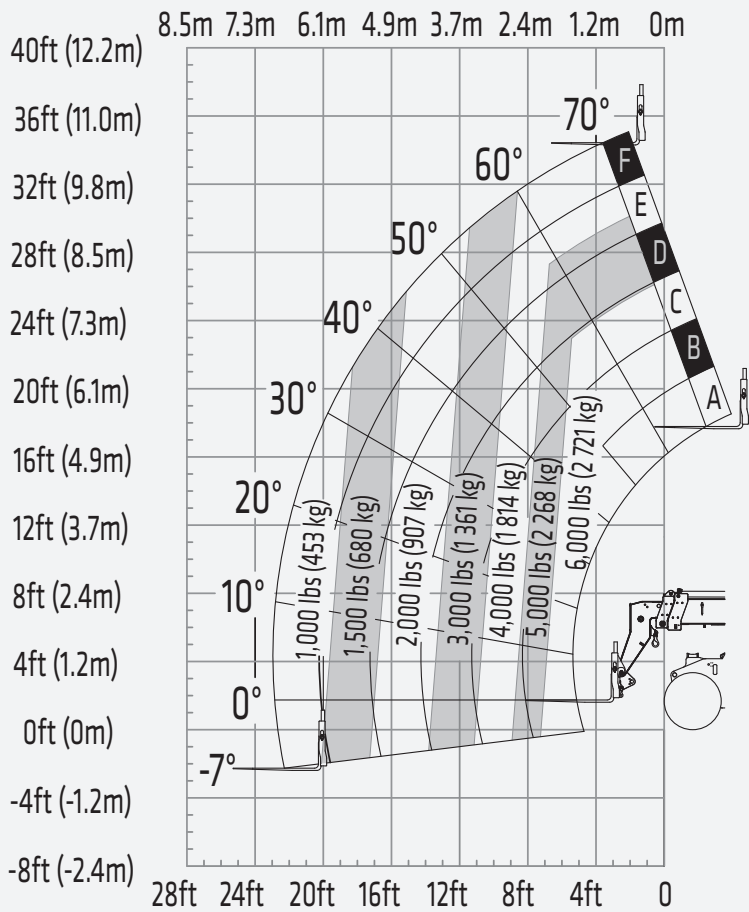


PRODUCT SPECIFICATIONS TELEHANDLER ||| STH634A

PERFORMANCE

PERFORMANCE		
Maximum Lift Capacity	6,000 lbs	2,721 kg
Lift Capacity at Maximum Height	4,000 lbs	1,814 kg
Lift Capacity at Maximum Reach	1,000 lbs	453 kg
Boom (Raise/Lower)	11/9 seconds	
Boom (Extend/Retract)	14/14 seconds	
Frame Leveling	+/- 10 degrees	
Maximum Drive Speed	17 mph	28 kph
Outside Turning Radius (4WS)	13' 9"	4.20 m
Auxiliary Hydraulic Flow	16 gpm	60 L/min
Auxiliary Hydraulic Pressure	2,466 psi	17 MPa
Standard Tire Size	15.00/19.5	



PRODUCT SPECIFICATIONS



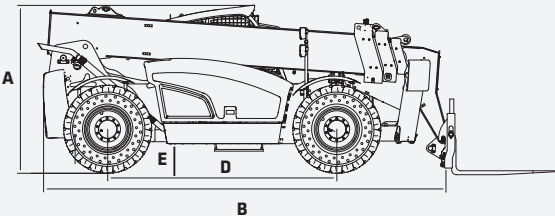
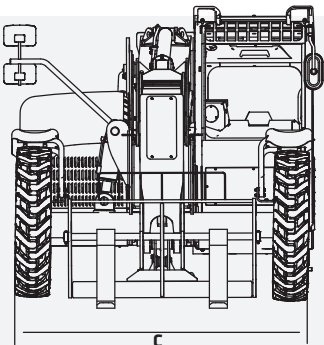
TELEHANDLER

||| STH634A

STANDARD FEATURES

- ➔ Can transport on gooseneck trailer
- ➔ Wide angle rear view camera
- ➔ Reverse object detection
- ➔ Bright LED work light package
- ➔ Powerful Deutz engine

**74 hp**  
Gross Power  
**34' 1"**  
Max Lift Height  
**6,000 lbs**  
Max Lift Capacity  
**15,370 lbs**  
Operating Weight



DIMENSIONS

DIMENSIONS		
Maximum Lift Height	34' 1"	10.40 m
Maximum Forward Reach	23'	7.00 m
A Height, Stowed	7' 11"	2.42 m
B Length, Stowed (without Forks)	7' 1"	5.20 m
C Width	7' 11"	2.42 m
D Wheelbase	10' 4"	3.14 m
E Ground Clearance (Center)	1' 2"	0.35 m
Ground Clearance (Axle)	1'	0.32 m
Weight	15,370 lbs	6,972 kg

TECHNICAL SPECIFICATIONS

CAPACITIES		
Gross Power	74 hp	55 kW
Torque	192 lbf-ft	260 Nm
Electrical System	24 volt	
Hydraulic Tank Capacity	18 gal	70 L
Hydraulic System Capacity (with Tank)	34 gal	130 L
Fuel Tank Capacity	36 gal	135 L
COMPONENTS		
Engine	Deutz TD 2.9	
Transmission	Dana VDT12000	
Axles F/R	Dana 212 / 212	
Hydraulic Pump	Casappa Load Sense Piston Pump	
Hydraulic Manifold	Parker	

\* Indicates load limited by hydraulic lifting capacity.  
In the interest of continual equipment development, SANY America Inc. reserves the right to change these specifications at any time without prior notification.  
©2023 SANY America Inc. HEXPS235TH634A001

SANY America Inc. 318 SANY Way  
Peachtree City, Georgia 30269  
470.552.SANY sanyamerica.com



\*Based on theoretical calculation at max flow with no load. Subject to alterations. In the interest of continual equipment development, SANY America Inc. reserves the right to change these specifications at any time without prior notification.  
©2023 SANY America Inc. HEXPS235TH634A001

PRODUCT SPECIFICATIONS TELEHANDLER ||| STH634A



STANDARD AND OPTIONAL EQUIPMENT

s = standard / o = optional

STH634A	ENGINE
s	Exhaust aftertreatment (DPF only, NO DEF)
	POWERTRAIN
s	Powershift transmission
s	Planetary limited slip axles
s	Full-time 4 wheel drive
s	Gear selector lever (steering-column)
s	Manual shift
s	Service brake, 4-wheel, wet-disc, spring applied, hydraulic release
s	Parking brake, same as service brake
s	Cushioned solid tires
	HYDRAULIC
s	Full variable load-sensing system
s	Single Electric Over Hydraulic Joystick Control
s	Axial piston pump
s	Hydraulic quick coupler lines for auxiliary hydraulics
s	Self-leveling forks
s	Three driver-selectable steering modes (2W, 4W, 4W-Crab)
	CABIN
s	ISO certified ROPS/FOPS Canopy
s	Emergency hammer (closed cabin only)
s	Rubber isolated cab mounts

In the interest of continual equipment development, SANY America Inc. reserves the right to change these specifications at any time without prior notification.  
©2023 SANY America Inc. HEXPS23STH634A001



\*Warranty applies to 2023 Crane, Telehandler, Grader and Roller models only.

PRODUCT SPECIFICATIONS TELEHANDLER ||| STH634A



STANDARD AND OPTIONAL EQUIPMENT

s = standard / o = optional

STH634A	CABIN (CONTINUED)
o	Fully enclosed cab with automatic heat and air conditioning
s	Digital instrument display
s	Mechanical suspension seat
s	Seat belt, 3" retractable
s	Dual armrests
s	2-speed fan
s	Dedicated display for rear-view camera
	ELECTRICAL
s	24V electrical system
s	2-12V batteries
	PRODUCTIVITY
s	Back up camera
s	Reverse sensing system
s	Full 4-wheel fender package
s	LED work lights on cab and boom
s	Flashing beacon
s	Lifting hook
s	Frame leveling 10 degrees side to side

In the interest of continual equipment development, SANY America Inc. reserves the right to change these specifications at any time without prior notification.  
©2023 SANY America Inc. HEXPS23STH634A001



sanyamerica.com