

SY80U

MINI HYDRAULIC EXCAVATOR **19,400 LBS** OPERATING WEIGHT
71.5 HP GROSS HORSEPOWER
14' 11" MAX DIGGING DEPTH

TECHNICAL SPECIFICATIONS

DIMENSIONS STANDARD STICK

Boom Length	11' 6"
Stick (Arm) Length	6' 9"
A Transport Length	23'
B Transport Height	8' 4"
C Upper Structure Width	7' 3"
D Cab Height	8' 4"
E Blade Height	1' 6"
F Track Gauge	5' 9"
G Ground Clearance	1' 2"
H Tail Swing Radius	4' 10"
I Track Length on Ground	7' 7"
J Track Length	9' 7"
K Track Width	7' 3"

MACHINE DATA STANDARD STICK

Operating Weight*	19,400 lbs
Bolt-on Counterweight	573 lbs
Ground Pressure	5.5 psi
Engine Model	4TNV98CT
Displacement	202.5 in ³
Net Power	67.9 HP @2,100 rpm
Gross Power	71.5 HP @2,100 rpm
Hydraulics	Load Sensing with Pilot Control
Main Hydraulic Pump	Axial Piston - Variable Displacement, EPC
Operating Flow (Max)	50.2 gpm
Operating Pressure (Max)	4,061 psi
Auxiliary Flow	26.4 gpm
Auxiliary Pressure	3,626 psi
Travel Motor	Axial Piston with Park Brake
Travel Pressure (Max)	4,061 psi
Travel Speeds (Max)	2.8 / 1.6 mph
Travel Effort (Max)	15,733 lbf
Gradability	30°
Swing Motor	Axial Piston with Swing Brake
Swing Pressure (Max)	4,718 lbf
Swing Speed (Max)	10.2 rpm
Undercarriage	Belted Rubber Track
Track Shoe Width	18"
Track Rollers	5 Per Side
Carrier Rollers	1 Per Side

SERVICE REFILL CAPACITIES

Fuel Tank Capacity	22.45 gal
Hydraulic Tank Capacity	27.74 gal
Engine Oil Capacity	2.25 gal
Cooling System Capacity	2.75 gal

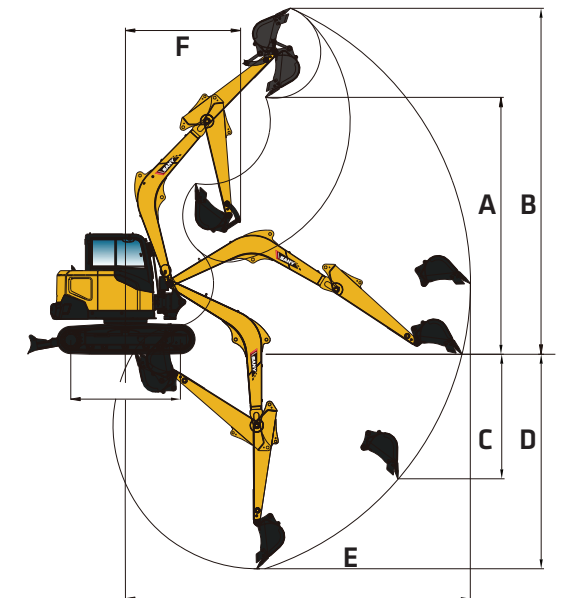
WORKING SPECIFICATIONS

WORKING RANGE STANDARD STICK

Boom Length	11' 6"
Stick (Arm) Length	6' 9"
A Maximum Digging Height	24'
B Maximum Dumping Height	17' 10"
C Maximum Digging Depth	14' 11"
D Maximum Vertical Wall Digging Depth	8' 2"
E Maximum Reach at Ground Level	23' 4"
F Minimum Swing Radius	8'

DIGGING PERFORMANCE STANDARD STICK

Boom Length	11' 6"
Stick (Arm) Length	6' 9"
Bucket Breakout Force (ISO)	14,000 lbf
Stick (Arm) Digging Force (ISO)	9,107 lbf



In the interest of continual equipment development, SANY America Inc. reserves the right to change these specifications at any time without prior notification.
 ©2026 SANY America Inc. HEXPS26SY80U001



*Warranty applies to 2026 Excavator and Wheel Loader models

SANY America Inc. 318 SANY Way
 Peachtree City, Georgia 30269
 470.552.SANY sanyamerica.com



sanyamerica.com ||| SY80U

*Operating weight is for the SY80U with no attachments, and standard stick.
 SANY America Inc. reserves the right to change these specifications at any time without prior notification. ©2026 SANY America Inc. HEXPS26SY80U001

sanyamerica.com ||| SY80U

MINI HYDRAULIC EXCAVATOR SY80U

STANDARD FEATURES

ENGINE

- Yanmar 4TNV98CT
- Tier 4F / EU Stage V Ready
- Auto-idle and shutoff
- Dual-element dry air filter
- Engine air precleaner
- Coolant Expansion tank
- Electronic engine control
- Fan guard
- Engine coolant to -37 deg. C (-34 deg. F)
- Full-flow oil filter
- Turbocharger
- High flow cooling fan
- 500-hour engine-oil-change interval
- No scheduled DPF maintenance for 6000 hours
- Fuel filter and water separator

HYDRAULIC SYSTEM

- Spring-applied, hydraulically released automatic swing brake
- Load sensing hydraulic system
- Control pattern change valve
- Primary auxiliary hydraulic circuit with 1 and 2-way combination piping
- Secondary auxiliary hydraulics circuit
- Auxiliary hydraulic-flow adjustments through monitor
- Adjustable auxiliary pressure relief
- Quick coupler plumbing

UNDERCARRIAGE

- Planetary drive with axial piston motors
- Propel motor shields
- Spring-applied, hydraulically released automatic propel brake
- Track guides, front idler and 2 per side
- 2-speed travel selection through display and on dozer lever
- 5 lower track rollers each side
- 1 upper carrier roller each side
- Dozer blade with cylinder guarding
- Tie downs on track frame and dozer blade
- 450mm (18") wide rubber tracks
- Undercarriage frame opening guard

UPPERSTRUCTURE

- Right-hand, left-hand, and counterweight mirrors
- Lockable cab, hood, and service doors
- Debris screen in side panel
- Remote-mounted engine oil and fuel filters
- Daily fluid level inspection visible from ground
- Rear reflectors

ATTACHMENTS

- Convenient grease points
- Dirt seals on all bucket pins

ATTACHMENTS

- Thumb bracket
- Oil-impregnated bushings
- Reinforced thrust plates

OPERATOR'S STATION

- Hydraulic pilot controls for boom, stick, swing, and travel operations
- Proportional auxiliary switches on joystick
- Travel levers with foot pedals
- AM/FM radio with bluetooth
- Cell phone tray
- Weight adjustable suspension cloth seat with adjustable armrests
- Retractable seatbelt
- Emergency stop switch
- Sliding front window
- Removable lower front window
- Window breaker
- ECO mode switch
- 8 tool selection modes
- Fully adjustable auxiliary flow circuits from display
- Multifunction LCD monitor with: Auto-shutoff indicator and setup, Radio with Bluetooth, HVAC control, operator and owner master passwords and diagnostic capability / multiple-language
- System monitoring features: auto-idle indicator, 2-speed indicator, work-mode indicator, preheat icon, time and date, battery charge icon, throttle position, engine oil pressure alarm, DPF regeneration inhibit indicator, fuel level gauge, maintenance needed icon, failure code, standard/eco work mode icon, engine coolant temperature, coolant temp alarm, severe failure alarm, work tool mode icon, operating hours
- High performance heating, ventilation, and air conditioning system
- Operation and maintenance manual storage
- Heavy duty removeable rubber floor mat
- Front windshield wiper with high and low speed
- Horn, electric
- Hour meter, electric
- Hydraulic shutoff lever, all controls
- Interior light and cup holder
- Operator E-anel
- Travel alarm with cancel switch
- Transparent overhead hatch with retractable sun shade

ELECTRICAL

- 12V electrical system
- Maintenance free battery
- Ground level battery disconnect
- Easy access fuse panel
- Terminal battery covers
- 80-amp alternator
- 12V power outlet

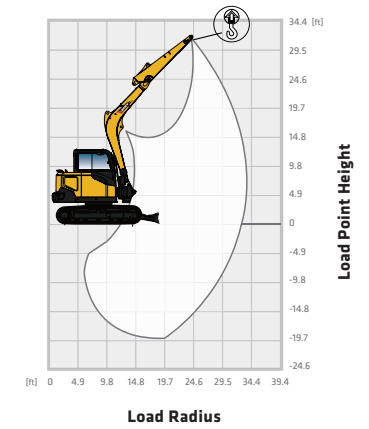
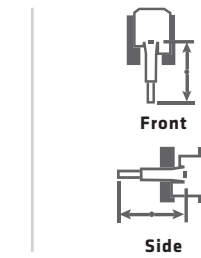
LIGHTS

- Work lights: 3 mounted on top of cab, 1 mounted on boom, magnetic beacon

LIFTING PERFORMANCE

- Standard 11' 6" Boom
- Standard 6' 9" Stick
- Standard 18" Track Shoes
- No Bucket

Ratings are based on ISO 10567:2007. Lift capacity does not exceed 75% of tipping load with the machine on firm, level ground or 87% of hydraulic lifting capacity.



Blade Up

B (HEIGHT)	9.8 FT		13.1 FT		16.4 FT		MAX	
LOAD POINT HEIGHT								
16.4 ft			*4,321 lbs	*4,321 lbs	*3,968 lbs	2,950 lbs	3,770 lbs	2,921 lbs
13.1 ft			*4,586 lbs	*4,586 lbs	*4,597 lbs	2,965 lbs	*2,701 lbs	2,326 lbs
9.8 ft	*6,834 lbs	*6,834 lbs	*5,600 lbs	4,134 lbs	3,902 lbs	2,899 lbs	2,833 lbs	2,050 lbs
6.6 ft	*8,488 lbs	5,897 lbs	5,346 lbs	3,880 lbs	3,781 lbs	2,778 lbs	2,612 lbs	1,907 lbs
3.3 ft	7,926 lbs	5,401 lbs	5,082 lbs	3,638 lbs	3,649 lbs	2,657 lbs	2,579 lbs	1,885 lbs
0.0 ft	7,771 lbs	5,269 lbs	4,938 lbs	3,505 lbs	3,560 lbs	2,579 lbs	2,679 lbs	1,951 lbs
-3.3 ft	7,694 lbs	5,203 lbs	4,839 lbs	3,417 lbs	3,494 lbs	2,513 lbs	2,998 lbs	2,194 lbs
-6.6 ft	7,738 lbs	5,236 lbs	4,839 lbs	3,417 lbs	3,527 lbs	2,535 lbs	3,593 lbs	2,612 lbs
-9.8 ft	*7,463 lbs	5,401 lbs					*5,049 lbs	3,825 lbs

Blade Down

B (HEIGHT)	9.8 FT		13.1 FT		16.4 FT		MAX	
LOAD POINT HEIGHT								
16.4 ft			*4,321 lbs	*4,321 lbs	*3,968 lbs	2,950 lbs	3,770 lbs	2,921 lbs
13.1 ft			*4,586 lbs	*4,586 lbs	*4,597 lbs	2,965 lbs	*2,701 lbs	2,326 lbs
9.8 ft	*6,834 lbs	*6,834 lbs	*5,600 lbs	4,134 lbs	*5,015 lbs	2,899 lbs	*3,494 lbs	2,050 lbs
6.6 ft	*10,461 lbs	5,897 lbs	*7,011 lbs	3,880 lbs	*5,666 lbs	2,778 lbs	*3,593 lbs	1,907 lbs
3.3 ft	*9,535 lbs	5,401 lbs	*8,256 lbs	3,638 lbs	*6,272 lbs	2,657 lbs	*3,858 lbs	1,885 lbs
0.0 ft	*10,692 lbs	5,269 lbs	*8,862 lbs	3,505 lbs	*6,603 lbs	2,579 lbs	*4,332 lbs	1,951 lbs
-3.3 ft	*12,500 lbs	5,203 lbs	*8,708 lbs	3,417 lbs	*6,471 lbs	2,513 lbs	*5,225 lbs	2,194 lbs
-6.6 ft	*10,836 lbs	5,236 lbs	*7,694 lbs	3,417 lbs	*5,390 lbs	2,535 lbs	*5,291 lbs	2,612 lbs
-9.8 ft	*7,463 lbs	5,401 lbs					*5,049 lbs	3,825 lbs

In the interest of continual equipment development, SANY America Inc. reserves the right to change these specifications at any time without prior notification. ©2026 SANY America Inc. HEXPS26SY80U001

In the interest of continual equipment development, SANY America Inc. reserves the right to change these specifications at any time without prior notification. ©2026 SANY America Inc. HEXPS26SY80U001