

# SY80U

**SANY**

**MINI HYDRAULIC  
EXCAVATOR**

**19,400 LBS** OPERATING WEIGHT  
**71.5 HP** GROSS HORSEPOWER  
**14.9 FT** MAX DIGGING DEPTH



**BUILT FOR TIGHT  
VERSATILITY**

EASY TO OWN, OPERATE, & SERVICE



**INDUSTRY'S  
STRONGEST  
STANDARD  
WARRANTY** | **5-YEAR\*  
5,000 HOURS**

\*Warranty applies to 2026 Excavator and Wheel Loader models

# MADE FOR AMERICAN OPERATORS

In the fields of Texas, a dedicated rancher relies on his SY80U to trench irrigation lines and clear brush for expanded pasture. Every task counts, and his compact excavator is engineered to tackle them reliably. The dependable Yanmar engine and load-sensing hydraulics deliver the strength and finesse he requires, while the 5-year/5,000-hour warranty safeguards his investment through countless demanding hours. Backed by his nearby dealer and the SANY America crew, he trusts his equipment will stand ready whenever the work calls. For ranchers like him, SANY delivers reliable machines he counts on to complete the hardest jobs.



## U | REDUCED RADIUS TAIL DESIGN (U)

The SY80U features a reduced radius tail design that blends powerful digging and lifting performance with compact machine dimensions for confined jobsites. It allows operators to work safely around buildings, traffic, other equipment, and tight jobsites where space is limited.



## 🔒 | QUICK COUPLER COMPATIBLE

The SY80U comes standard with factory quick-coupler plumbing and cab controls, with OEM couplers available through your local SANY dealer. This makes adding a coupler less expensive, easy, and fully integrated. Couplers improve jobsite efficiency, simplify transport, and increase versatility, giving you more capability from the same machine.



## 🔧 | COMPONENTS YOU TRUST

The SY80U is built with components by brands you know and trust. From Yanmar to Hengli, you're getting a machine made with familiar, proven, reliable systems that offer ample support. It's an ecosystem of dependable components that make ownership easier.



## 🔧 | BACKFILL BLADE STANDARD

The SY80U comes standard with a heavy-duty backfill blade for pushing spoil piles, backfilling trenches, and rough grading. Blade float allows the blade to follow ground contours for smoother results, while the blade itself provides a more stable working platform when digging and lifting, improving control and confidence.



## 🔧 | AUXILLARY HYDRAULICS

The SY80U Includes factory-installed auxiliary hydraulics: a high-flow primary circuit, a circuit, and a case drain. The primary circuit supports one-way flow, two-way flow and continuous flow. All auxiliary flow settings are easily adjustable from the cab display.

# 14,000+ FOOT POUNDS

Bucket breakout force.



# A MACHINE THAT'S EASY TO OWN

This compact SY80U is designed for versatility, offering operators a strong, nimble machine that supports construction tasks with a reduced tail radius and a standard backfill blade. Easy to move behind heavy-duty pickup trucks and trailers, it remains a true powerhouse for small contractors and landscapers needing capability without complexity. Factory quick-coupler plumbing and auxiliary hydraulic lines speed attachment changes, delivering flexibility without unnecessary hassle added. Built with trusted, proven components that are fully supported, the SY80U delivers long-term reliability. A durable chassis engineered for stability and safety in tight spaces helps it work hard, adapt easily, and make ownership simple day after day.

# RELIABLE FROM THE INSIDE OUT

Extended workdays, operator safety, and consistent revenue all rely on equipment you can depend on, and the SY80U is built with that responsibility in mind—engineered to deliver thousands of productive hours in demanding, tight working environments. Its robust structure is designed to handle continuous digging and lifting forces, while the hydraulic system delivers steady, predictable power and pressure. The powertrain is built to run all day, keeping hydraulic pumps operating without interruption. Every aspect of the machine is focused on reducing downtime and maximizing output. That's why the SY80U is backed by a 5-year / 5,000-hour standard warranty, providing proven reliability that keeps your work on schedule.

# 71.5

## HORSE POWER

Gross horse power @ 2,100 rpm by  
Yanmar 4TNV98CT

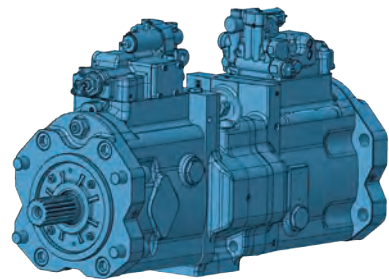
### STRUCTURAL INTEGRITY

SANY machines don't cut corners on steel. We build each machine with the material it needs to deliver strength, stability and durability. Reinforced booms and sticks with internal ribbing add stiffness and rigidity, while the reinforced X-frame undercarriage is built to take a beating on the toughest terrain. In our state-of-the-art factories, robotic welding and CNC cutting ensure every part fits properly and is welded to last. Strict quality control then confirms the structural integrity meets our standards before it ever reaches your jobsite.



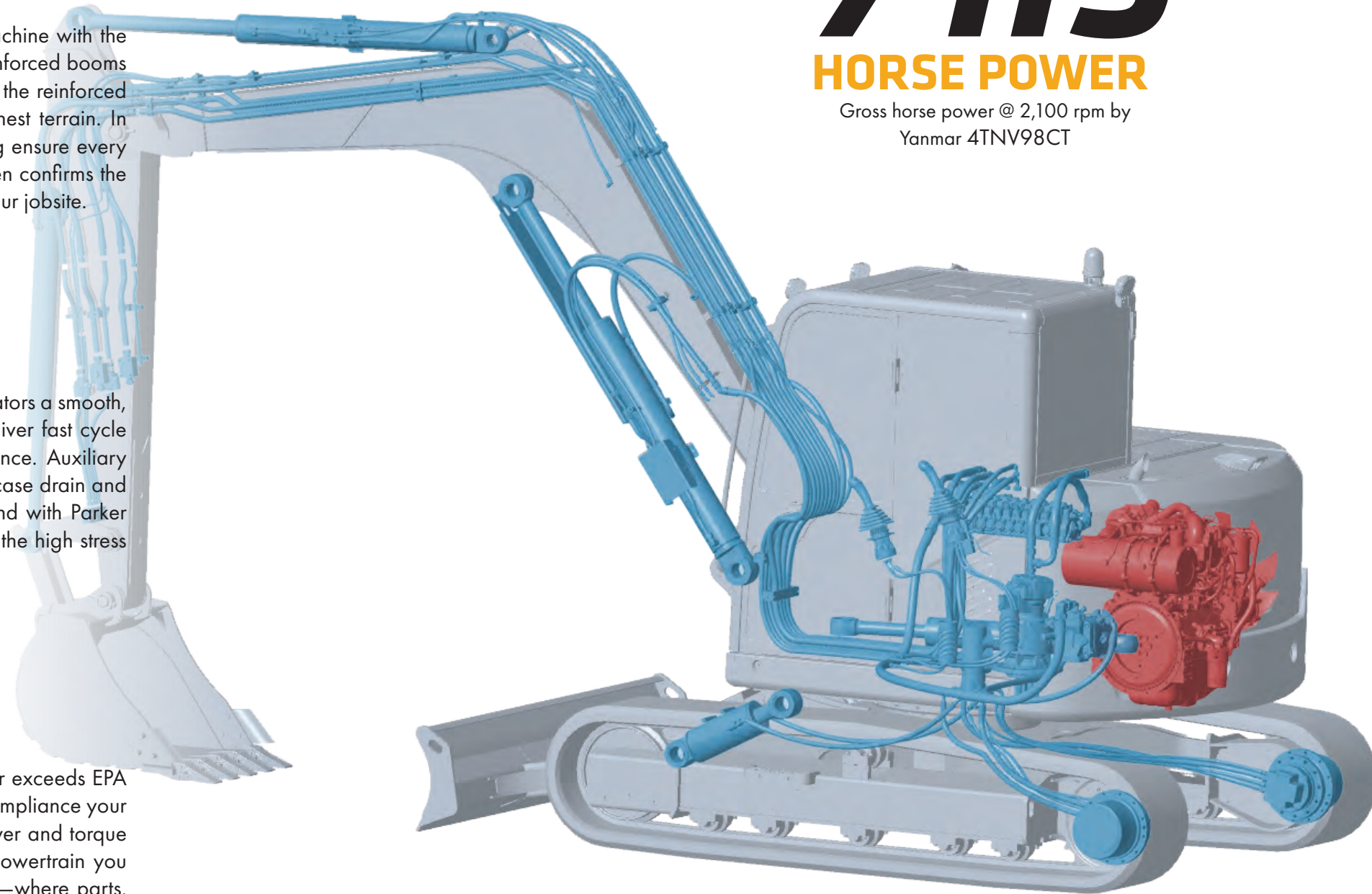
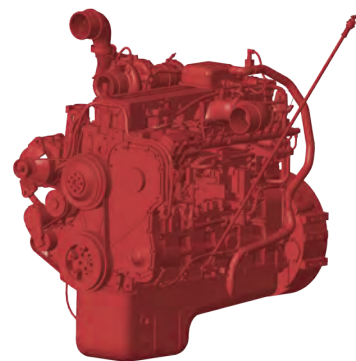
### HYDRAULIC SYSTEM

The SY80U uses a pilot-controlled hydraulic system giving operators a smooth, predictable feel at the controls. Its load-sensing hydraulics deliver fast cycle speeds, strong breakout forces and excellent lifting performance. Auxiliary hydraulic flow is easily adjustable from the cab display with a case drain and dedicated rotate circuit included standard from the factory. And with Parker hydraulic components throughout, the system is built to handle the high stress and demanding work your projects require.



### POWERTRAIN BY YANMAR

Powered by an Yanmar 4TNV98CT diesel engine that meets or exceeds EPA emissions regulations, the SY80U provides the efficiency and compliance your business needs. With 71.5 hp at 2,100 rpm, it delivers the power and torque to run day and night on the most demanding jobsites. It's a powertrain you already know and trust—backed by a major support network—where parts, service and expertise are always within reach. That means more uptime, less worry and a machine that works as hard as you do.



# 16+ FEATURES

specifically designed for operator  
and jobsite safety.



# SAFETY PRIORITIZED

We design for safety first. Operators get secure handrails, OEM FOPS cab guarding, and a ROPS-verified cab with multiple exit points. A retractable seatbelt and emergency shut-off add protection inside, while cameras, alarms, and 360° lighting enhance awareness for a safer jobsite.

# SY80U

**MINI HYDRAULIC EXCAVATOR** **19,400 LBS** OPERATING WEIGHT  
**71.5 HP** GROSS HORSEPOWER  
**14' 11"** MAX DIGGING DEPTH



## TECHNICAL SPECIFICATIONS

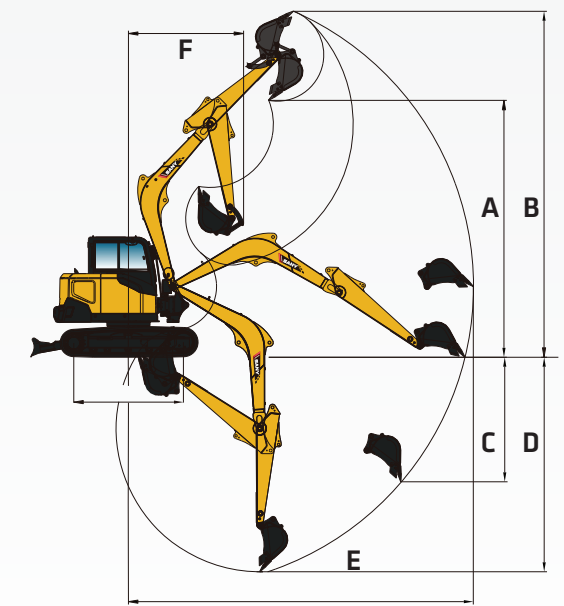
MACHINE DATA	STANDARD STICK
Operating Weight*	19,400 lbs
Bolt-on Counterweight	573 lbs
Ground Pressure	5.5 psi
<b>Engine Model</b>	4TNV98CT
Displacement	202.5 in <sup>3</sup>
Net Power	67.9 HP @2,100 rpm
Gross Power	71.5 HP @2,100 rpm
<b>Hydraulics</b>	Load Sensing with Pilot Control
Main Hydraulic Pump	Axial Piston - Variable Displacement, EPC
Operating Flow (Max)	50.2 gpm
Operating Pressure (Max)	4,061 psi
Auxiliary Flow	26.4 gpm
Auxiliary Pressure	3,626 psi
<b>Travel Motor</b>	Axial Piston with Park Brake
Travel Pressure (Max)	4,061 psi
Travel Speeds (Max)	2.8 / 1.6 mph
Travel Effort (Max)	15,733 lbf
Gradability	30°
<b>Swing Motor</b>	Axial Piston with Swing Brake
Swing Pressure (Max)	4,718 lbf
Swing Speed (Max)	10.2 rpm
<b>Undercarriage</b>	Belted Rubber Track
Track Shoe Width	18"
Track Rollers	5 Per Side
Carrier Rollers	1 Per Side

## WORKING SPECIFICATIONS

WORKING RANGE	STANDARD STICK
Boom Length	11' 6"
Stick (Arm) Length	6' 9"
A Maximum Digging Height	24'
B Maximum Dumping Height	17' 10"
C Maximum Digging Depth	14' 11"
D Maximum Vertical Wall Digging Depth	8' 2"
E Maximum Reach at Ground Level	23' 4"
F Minimum Swing Radius	8'

DIGGING PERFORMANCE	STANDARD STICK
Boom Length	11' 6"
Stick (Arm) Length	6' 9"
Bucket Breakout Force (ISO)	14,000 lbf
Stick (Arm) Digging Force (ISO)	9,107 lbf



\*Operating weight is for the SY80U with no attachments, and standard stick.  
SANY America Inc. reserves the right to change these specifications at any time without prior notification. ©2026 SANY America Inc. HEXPS26SY80U001

# MINI HYDRAULIC EXCAVATOR SY80U

## STANDARD FEATURES

### ENGINE

- Yanmar 4TNV98CT
- Tier 4F / EU Stage V Ready
- Auto-idle and shutoff
- Dual-element dry air filter
- Engine air precleaner
- Coolant Expansion tank
- Electronic engine control
- Fan guard
- Engine coolant to -37 deg. C (-34 deg. F)
- Full-flow oil filter
- Turbocharger
- High flow cooling fan
- 500-hour engine-oil-change interval
- No scheduled DPF maintenance for 6000 hours
- Fuel filter and water separator

### HYDRAULIC SYSTEM

- Spring-applied, hydraulically released automatic swing brake
- Load sensing hydraulic system
- Control pattern change valve
- Primary auxiliary hydraulic circuit with 1 and 2-way combination piping
- Secondary auxiliary hydraulics circuit
- Auxiliary hydraulic-flow adjustments through monitor
- Adjustable auxiliary pressure relief
- Quick coupler plumbing

### UNDERCARRIAGE

- Planetary drive with axial piston motors
- Propel motor shields
- Spring-applied, hydraulically released automatic propel brake
- Track guides, front idler and 2 per side
- 2-speed travel selection through display and on dozer lever
- 5 lower track rollers each side
- 1 upper carrier roller each side
- Dozer blade with cylinder guarding
- Tie downs on track frame and dozer blade
- 450mm (18") wide rubber tracks
- Undercarriage frame opening guard

### UPPERSTRUCTURE

- Right-hand, left-hand, and counterweight mirrors
- Lockable cab, hood, and service doors
- Debris screen in side panel
- Remote-mounted engine oil and fuel filters
- Daily fluid level inspection visible from ground
- Rear reflectors

### ATTACHMENTS

- Convenient grease points
- Dirt seals on all bucket pins

### ATTACHMENTS

- Thumb bracket
- Oil-impregnated bushings
- Reinforced thrust plates

### OPERATOR'S STATION

- Hydraulic pilot controls for boom, stick, swing, and travel operations
- Proportional auxiliary switches on joystick
- Travel levers with foot pedals
- AM/FM radio with bluetooth
- Cell phone tray
- Weight adjustable suspension cloth seat with adjustable armrests
- Retractable seatbelt
- Emergency stop switch
- Sliding front window
- Removable lower front window
- Window breaker
- ECO mode switch
- 8 tool selection modes
- Fully adjustable auxiliary flow circuits from display
- Multifunction LCD monitor with: Auto-shutoff indicator and setup, Radio with Bluetooth, HVAC control, operator and owner master passwords and diagnostic capability / multiple-language
- System monitoring features: auto-idle indicator, 2-speed indicator, work-mode indicator, preheat icon, time and date, battery charge icon, throttle position, engine oil pressure alarm, DPF regeneration inhibit indicator, fuel level gauge, maintenance needed icon, failure code, standard/eco work mode icon, engine coolant temperature, coolant temp alarm, severe failure alarm, work tool mode icon, operating hours
- High performance heating, ventilation, and air conditioning system
- Operation and maintenance manual storage
- Heavy duty removeable rubber floor mat
- Front windshield wiper with high and low speed
- Horn, electric
- Hour meter, electric
- Hydraulic shutoff lever, all controls
- Interior light and cup holder
- Operator E-anel
- Travel alarm with cancel switch
- Transparent overhead hatch with retractable sun shade

### ELECTRICAL

- 12V electrical system
- Maintenance free battery
- Ground level battery disconnect
- Easy access fuse panel
- Terminal battery covers
- 80-amp alternator
- 12V power outlet

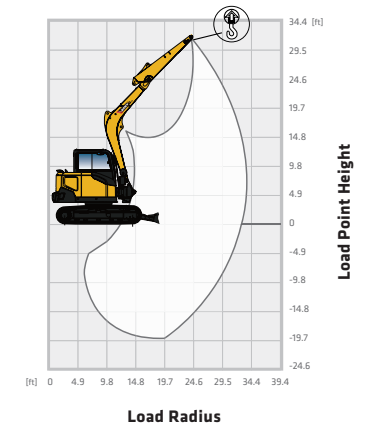
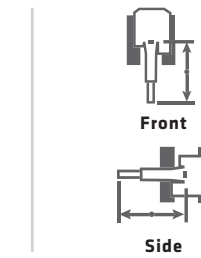
### LIGHTS

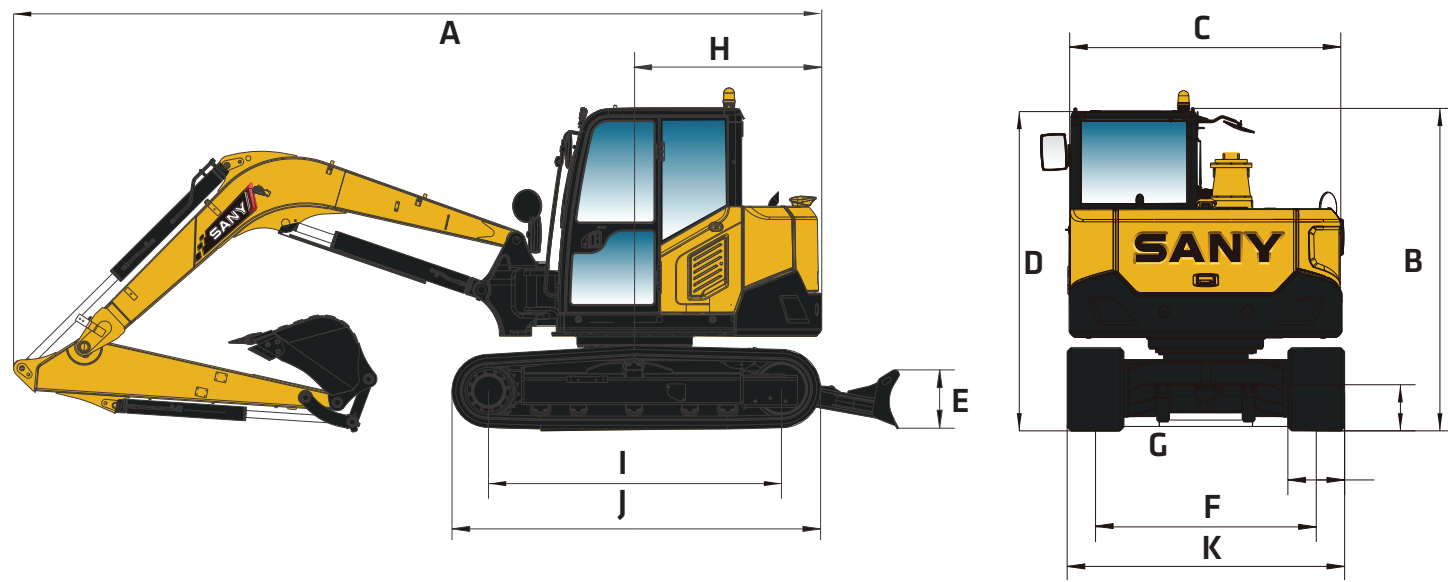
- Work lights: 3 mounted on top of cab, 1 mounted on boom, magnetic beacon

## LIFTING PERFORMANCE

- Standard 11' 6" Boom
- Standard 6' 9" Stick
- Standard 18" Track Shoes
- No Bucket

Ratings are based on ISO 10567:2007. Lift capacity does not exceed 75% of tipping load with the machine on firm, level ground or 87% of hydraulic lifting capacity.





# CONNECTED, INFORMED, IN CONTROL TECHNOLOGY

## CONNECTED EVI TELEMATICS

EVI is SANY's proprietary telematics platform and is available through your local dealer on excavators. This dashboard lets you track and geofence the machine, view reports on consumption and run time, monitor error codes and manage your SANY fleet—all with more features continually being launched to keep you connected and in control.

## ATTACHMENT CONTROL

The SY80U's in-cab display includes preset attachment profiles and allows selection of one-way or two-way flow, continuous flow, and flow adjustments. Operators can fine-tune settings on the fly to maintain control and maximize performance.

## INFORMATION AT YOUR FINGERTIPS

The touchscreen display is the operator's hub, showing key machine metrics like fuel, engine and hydraulic temperatures, service codes and more. It also displays the back up camera, allows quick adjustment of HVAC, and radio while also supporting Bluetooth hands-free calling, and operator presets—all in one easy-to-use central command center.

DIMENSIONS	STANDARD STICK
Boom Length	11' 6"
Stick (Arm) Length	6' 9"
A Transport Length	23'
B Transport Height	8' 4"
C Upper Structure Width	7' 3"
D Cab Height	8' 4"
E Blade Height	1' 6"
F Track Gauge	5' 9"
G Ground Clearance	1' 2"
H Tail Swing Radius	4' 10"
I Track Length on Ground	7' 7"
J Track Length	9' 7"
K Track Width	7' 3"

SERVICE REFILL CAPACITIES	
Fuel Tank Capacity	22.45 gal
Hydraulic Tank Capacity	27.74 gal
Engine Oil Capacity	2.25 gal
Cooling System Capacity	2.75 gal

In the interest of continual equipment development, SANY America Inc. reserves the right to change these specifications at any time without prior notification.  
©2026 SANY America Inc. HEXPS26SY80U001



\*Warranty applies to 2026 Excavator and Wheel Loader models

SANY America Inc. 318 SANY Way  
Peachtree City, Georgia 30269  
470.552.SANY sanyamerica.com



sanyamerica.com ||| SY80U



# DO EVERYTHING

Perform tasks and view important data all through one display.

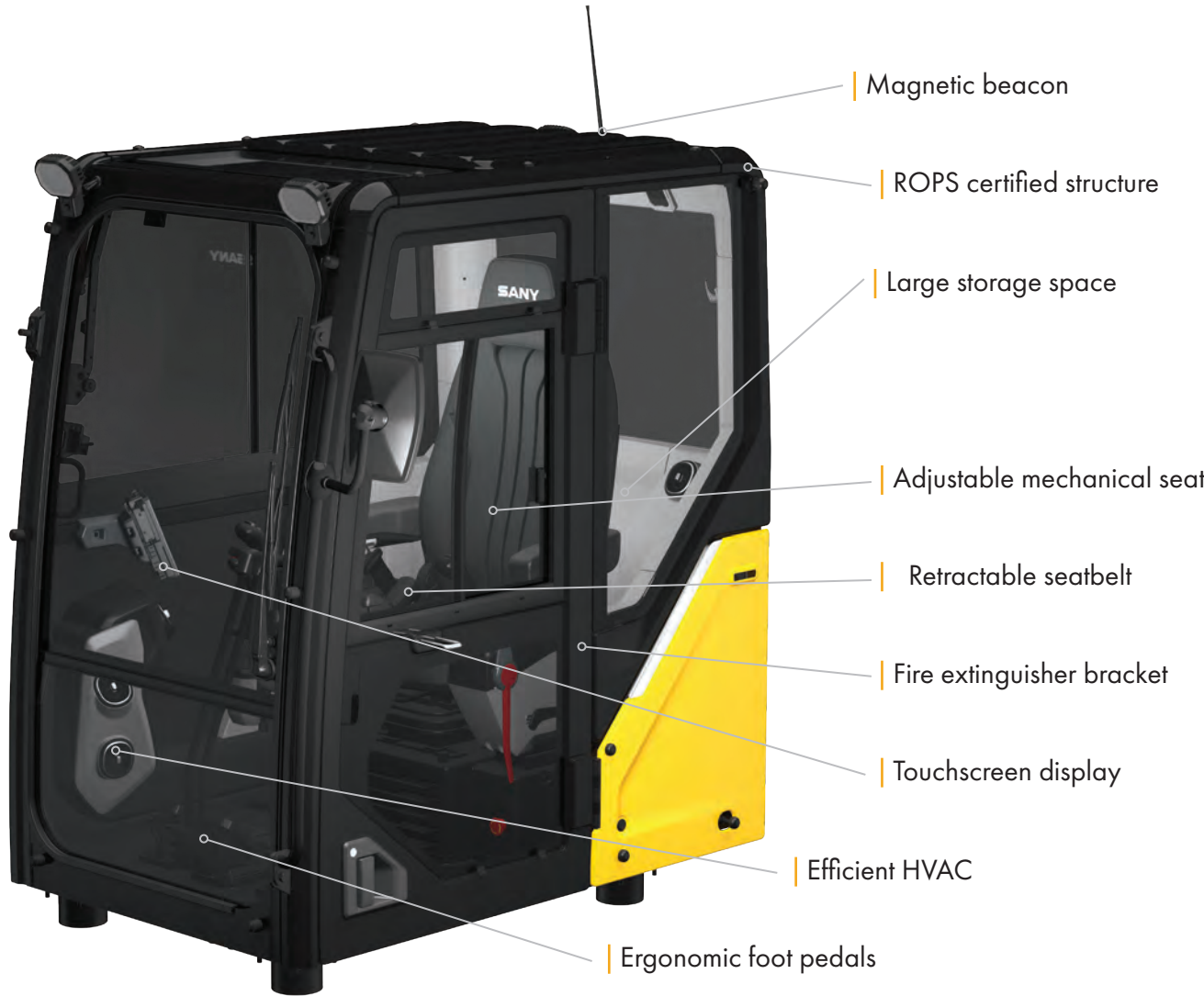
sanyamerica.com ||| SY80U 9

# BUILT AROUND THE OPERATOR

**5**  
**POINTS**  
of seat adjustability.

## DESIGNED FOR COMFORT ALL SHIFT LONG

This spacious cab is built for comfort and intuitiveness with safety and ergonomics at the core. The seat offers 5 adjustment points to achieve the ideal position for all-day comfort. SANY's E-panel places common functions within easy reach and the touchscreen display serves as the control hub. Upgraded HVAC keeps the cab comfortable in any weather, while Bluetooth connectivity and improved noise isolation allow clear hands-free calls. Large glass panels maximize visibility of the work area, helping operators stay comfortable and productive throughout the shift.



### CUSTOM OPERATOR ERGONOMICS

The adjustable mechanical seat gives operators complete control over their seating position—height, and distance—so they can align perfectly with the joysticks and foot pedals. This precise adjustability supports better control and a more comfortable working posture all day long.

### OPTIMAL JOBSITE AWARENESS

Large glass panels, sliding side windows, and integrated backup and blind-side cameras give operators a clear view of their surroundings. With added surround-view mirrors, they can confidently and safely control the machine on the jobsite.

# INTENTIONALLY ENGINEERED FOR SERVICE

## UPTIME IS OUR PRIORITY

With fast diagnostics, streamlined repairs and software tools for remote support it's easy to keep your SANY excavator running strong. Our local dealer network, stretching across North America, provides quick response and maximizes your productivity.

## DEDICATED TO SUPPORT

We're expanding our U.S. footprint with local engineering, quality assurance and service teams—backed by a multi-year investment in support, training, and parts.

## PARTS ON THE SHELF READY TO SHIP

We continually expand parts inventory across our major North American distribution centers and improve forecasting to keep high-demand components in stock. This longterm strategy ensures critical parts are ready to ship when they're needed most.

## EASE OF ACCESS

Its spacious compartments offer ample room for tools, filters, and components, ensuring efficient inspections and replacements that minimize downtime on the job site.

## FAST DAILY PRE-CHECKS

Machines are designed so operators can safely and easily inspect critical systems—mostly from the ground—for quick visual and manual checks.

# 15% MORE

engine compartment space than previous generation machines.



# WE'VE GOT YOUR BACK

At SANY, we see every customer as a relationship whose success is directly tied to ours. We focus on keeping you productive, because when your machines are running, your business is winning. Our warranty support, faster claim approvals are built to protect your operations not just your equipment. Your feedback fuels continuous improvement—real updates to software, hydraulics, and performance through close collaboration with key suppliers. With expanding U.S. support, trained technicians, ongoing investments, and stronger parts availability, we stay by your side so your business can keep moving forward.

# CUSTOMERS FIRST ALWAYS

At SANY America, everything begins with you. We design machines that make your work safer, more efficient, and more profitable—and we stand behind them with U.S.-based support you can count on. From ergonomic cabs and superior visibility to quick daily checks and dependable uptime, every feature is engineered around real operator needs and real jobsite demands. Your feedback directly drives our product improvements, accelerating software updates, hydraulic refinements, and long-term durability enhancements. With expanding American facilities, local engineering and service teams, certified technicians, and three parts distribution centers nationwide, we operate as your committed business partner—focused on your success today and every day ahead.

## FINANCING THAT WORKS AS HARD AS YOU DO

Smart financing that makes owning SANY equipment faster, easier, and affordable.

- **Quick approvals – many customers approved in under 5 minutes**
- **Simple mobile app for secure document signing and easy payment management**
- **Flexible terms and competitive promotions, including 0% for 60 months**
- **Faster approvals for repeat customers to keep your fleet growing**
- **Top-rated experience with a 4.95 out of 5 Trustpilot score**

Financing with SANY is built to support your business growth every step of the way.

## INDUSTRY'S **STRONGEST** STANDARD WARRANTY

SANY America delivers the most comprehensive standard warranty in the industry—protecting your investment from day one.

- **5 years / 5,000 hours of full machine coverage included with every excavator**
- **Lower total operating risk and fewer unexpected costs over machine life**
- **Confidence in long-term durability backed by factory engineering and testing**
- **Stronger coverage than leading OEM competitors – standard, not add-on**

Choosing SANY means choosing equipment built to work—and a partner committed to standing behind your success.

## TOTAL COST OF OWNERSHIP

SANY machines are engineered to deliver a stronger return on investment by lowering the true cost of ownership over the life of your equipment.

- **Fuel-efficient performance reduces operating costs every hour the machine runs**
- **Extended service intervals minimize downtime and maintenance expense**
- **Parts cost management keeps replacement and wear items affordable**
- **High resale value helps protect your investment over time**
- **More standard features from the factory reduce the need for costly add-ons**

Every detail is designed to help you earn more, spend less, and get maximum value from every machine you own.



# SANY

**INDUSTRY'S  
STRONGEST  
STANDARD  
WARRANTY** | **5-YEAR  
5,000 HOURS**

\*Warranty applies to 2026 Excavator and Wheel Loader models.



**SANY America Inc.**  
**318 SANY Way**  
**Peachtree City | GA 30269**  
**T | 470-552-SANY**  
**BRCE26SY80U001**

**sanyamerica.com**

In the interest of continual equipment development, SANY America Inc. reserves the right to change these specifications at any time without prior notification.

© 2026 SANY America Inc.