



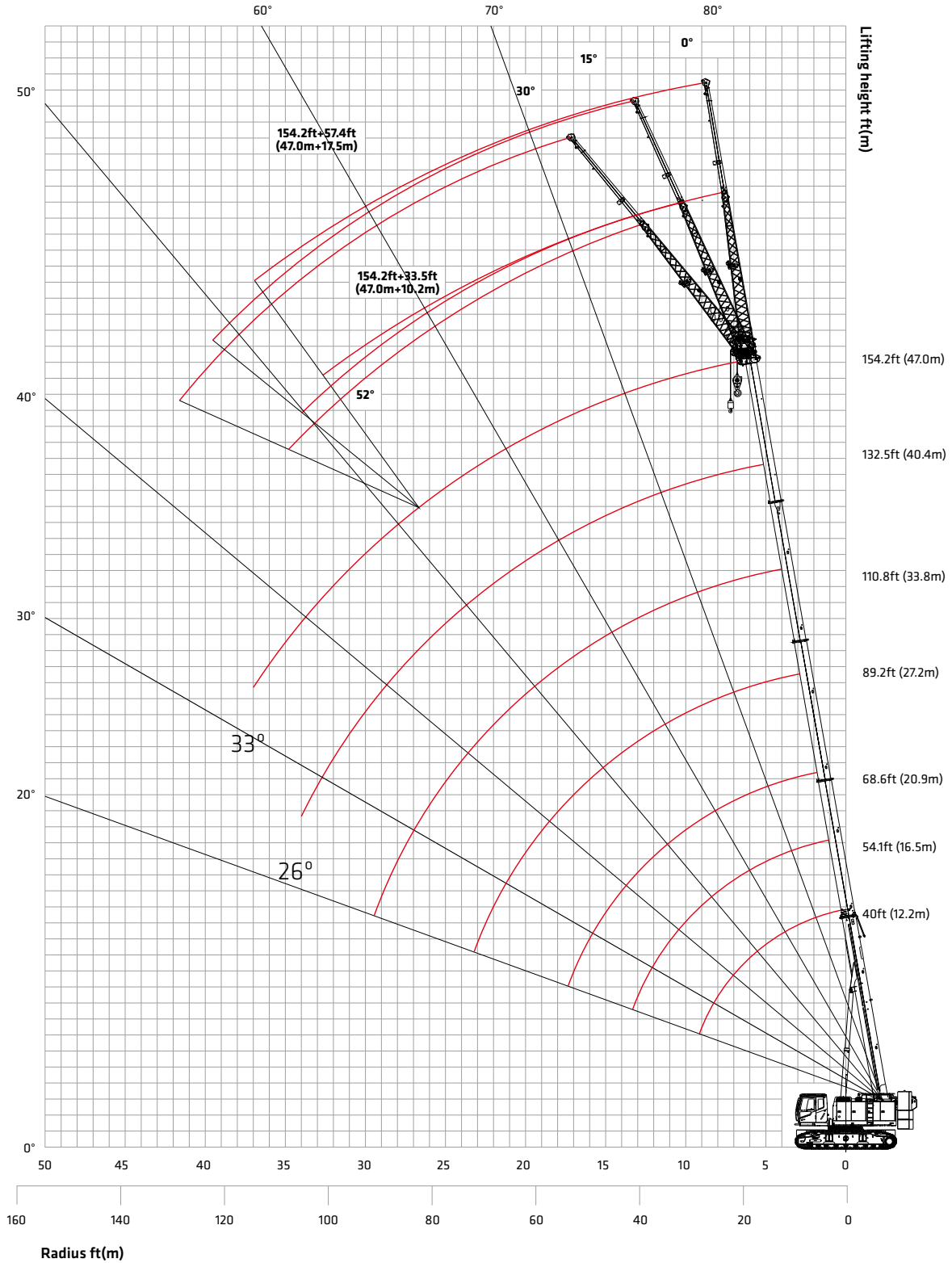
**SCA900TB**  
**TELESCOPIC BOOM CRAWLER CRANE**  
**90 UST (81.6 mt) LIFTING CAPACITY**

MADE FOR AMERICA

## Configurations

- Page 14 Working range of H
- Page 15 Load Chart of H
- Page 17 Load Chart of FJ

## Working range of H



**Load Chart of H**

H Configuration load chart								
Radius(ft)	Rear Counterweight 57.3Klb, Carbody Counterweight 13.2Klb						Radius(ft)	
	40	54.1	68.6	89.2	110.9	132.5		154.2
10	180	141	-	-	-	-	-	10
12	158.2	132.9	-	-	-	-	-	12
15	141	130.2	93.3	-	-	-	-	15
20	109.1	102	85.3	65.1	52.1	43.4	-	20
25	80.7	80.3	67.3	58.2	45.6	38	-	25
30	58.2	57.7	57.1	52.7	44.5	34.7	25.8	30
35	-	42.3	40.8	42.5	35.7	30	23.6	35
40	-	36.2	33.8	38	32.5	27.1	23	40
45	-	-	25.6	29.3	27.6	25.8	22.5	45
50	-	-	19.4	22.5	23.4	22	21.4	50
55	-	-	-	19.1	20	19.9	18.7	55
60	-	-	-	17.4	18.2	19.3	17.6	60
65	-	-	-	14.1	15.2	16.1	16	65
70	-	-	-	11.5	12.6	13.4	13.7	70
75	-	-	-	-	10.1	11	11.9	75
80	-	-	-	-	8.9	9.6	10.6	80
85	-	-	-	-	8.4	9	10.1	85
90	-	-	-	-	6.8	7.5	8.6	90
95	-	-	-	-	-	6.5	7.7	95
100	-	-	-	-	-	6.1	7.4	100
105	-	-	-	-	-	5.1	6.2	105
110	-	-	-	-	-	-	5.3	110
120	-	-	-	-	-	-	3.9	120
Parts of line	12	10	8	6	5	4	3	Parts of line
Min. Angle	-	-	-	-	-	26°	33°	Min. Angle
Telescoping Status (%)								
Section 2	0	50	100	100	100	100	100	Section 2
Section 3	0	0	0	25	50	75	100	Section 3
Section 4	0	0	0	25	50	75	100	Section 4
Section 5	0	0	0	25	50	75	100	Section 5



**Load Chart of FJ**

FJ Configuration load chart (Imperial)							
Boom operation angle	Rear Counterweight is 57.3Klb, Carbody Counterweight 13.2Klb						Boom operation angle
	154.2+33.5 jib			154.2+57.4 jib			
	0°	15°	30°	0°	15°	30°	
80°	12.1	8.4	7.3	7.3	4.4	3.3	80°
78°	11.5	8.4	7.1	6.6	4.2	2.9	78°
76°	10.8	8.2	6.4	6.0	4.0	2.9	76°
74°	9.3	7.7	6.0	5.1	3.7	2.6	74°
72°	7.9	7.3	5.7	4.6	3.5	2.6	72°
70°	8.6	6.8	5.3	4.2	3.3	2.4	70°
68°	7.7	6.4	5.1	4.0	3.1	2.4	68°
66°	6.8	6.0	4.8	3.7	2.9	2.2	66°
64°	6.0	5.5	4.6	3.5	2.6	2.2	64°
62°	5.1	5.1	4.4	3.3	2.4	2.2	62°
60°	4.4	4.4	4.0	3.1	2.2	2.0	60°
58°	4.0	3.7	3.1	2.6	2.0	2.0	58°
56°	3.5	3.1	2.6	2.4	2.0	1.8	56°
54°	2.6	2.4	2.2	2.0			54°
52°	2.0						52°
Min. angle	50°						Min. angle

Note: rated capacity of crane

- The rated load in the load chart is calculated complying with ASME B30.5.
- All ratings in the table are calculated when the machine is sitting on firm and level ground with less than 1% gradient, and the load lifting is slowly and steadily.
- All ratings in the table are calculated with wind speed under 22mph and tipping load of 75%.
- All ratings in the table are valid for 360° swing.
- The rated load is no more than 18Klb (8.2mt) when using auxiliary boom sheave. If the jib is extended, the boom rated load shall reduce 5.1Klb (2.3mt).
- The ratings in the table include the weight of hook block and riggings (main hook block of 2.3Klb (1.05t), aux. hook block of 0.8Klb (0.35t)). The weight of hook, riggings and wire ropes shall be deducted from the ratings to get the actual load capacity.

