

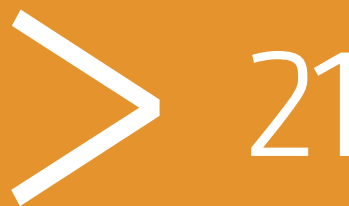


**SCA2600A**  
**LATTICE BOOM CRAWLER CRANE**  
**300 UST (272 mt) LIFTING CAPACITY**

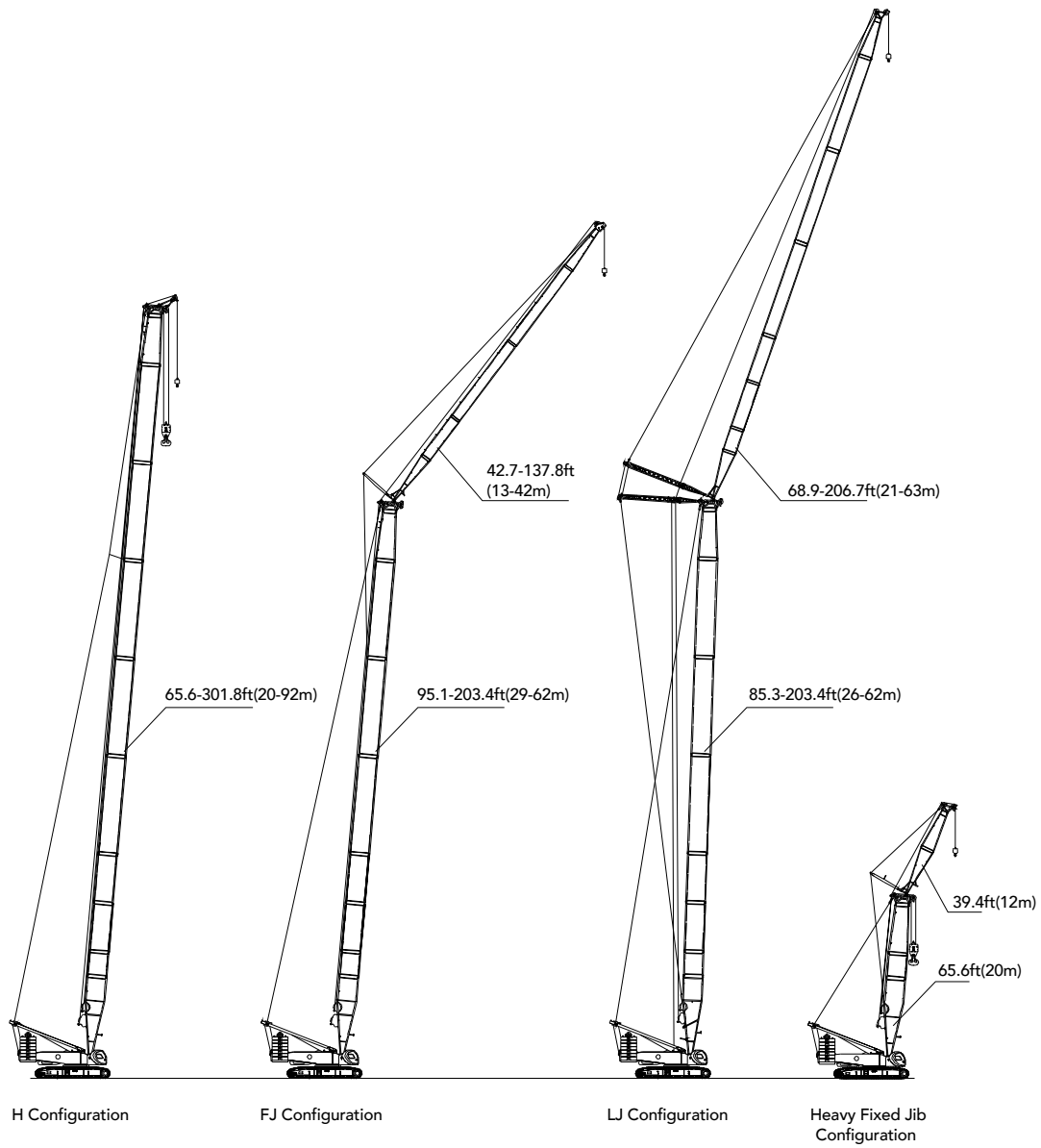
MADE FOR AMERICA

## Configurations

- Page 22 Boom Combinations
- Page 23 H Configuration
- Page 24 H Working Radius
- Page 25 H Load Chart
- Page 27 H Load Chart
- Page 28 FJ Working Radius
- Page 29 FJ Load Chart
- Page 35 LJ Configuration
- Page 36 LJ Working Radius
- Page 37 LJ Load Chart
- Page 72 Heavy Fixed Jib Configuration



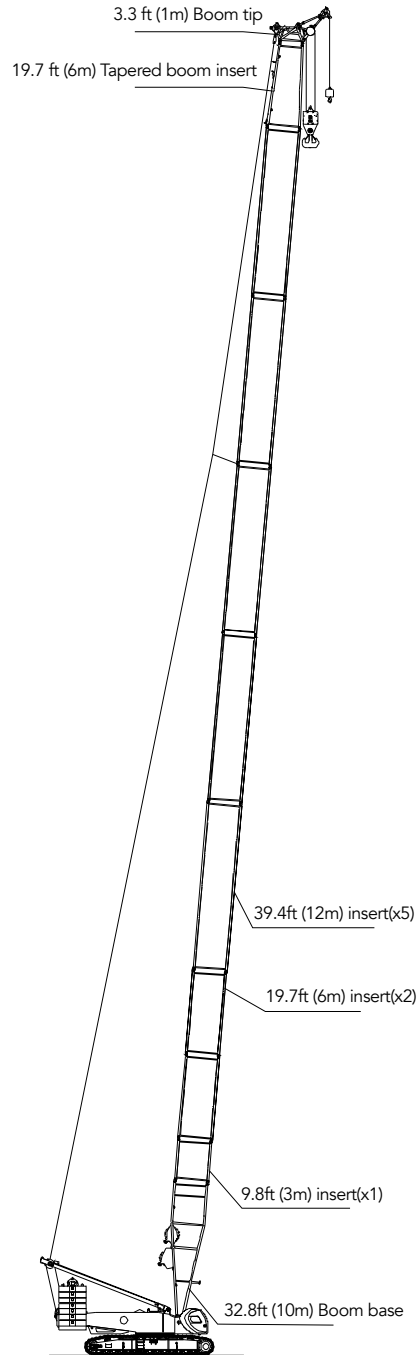
## Boom Combinations



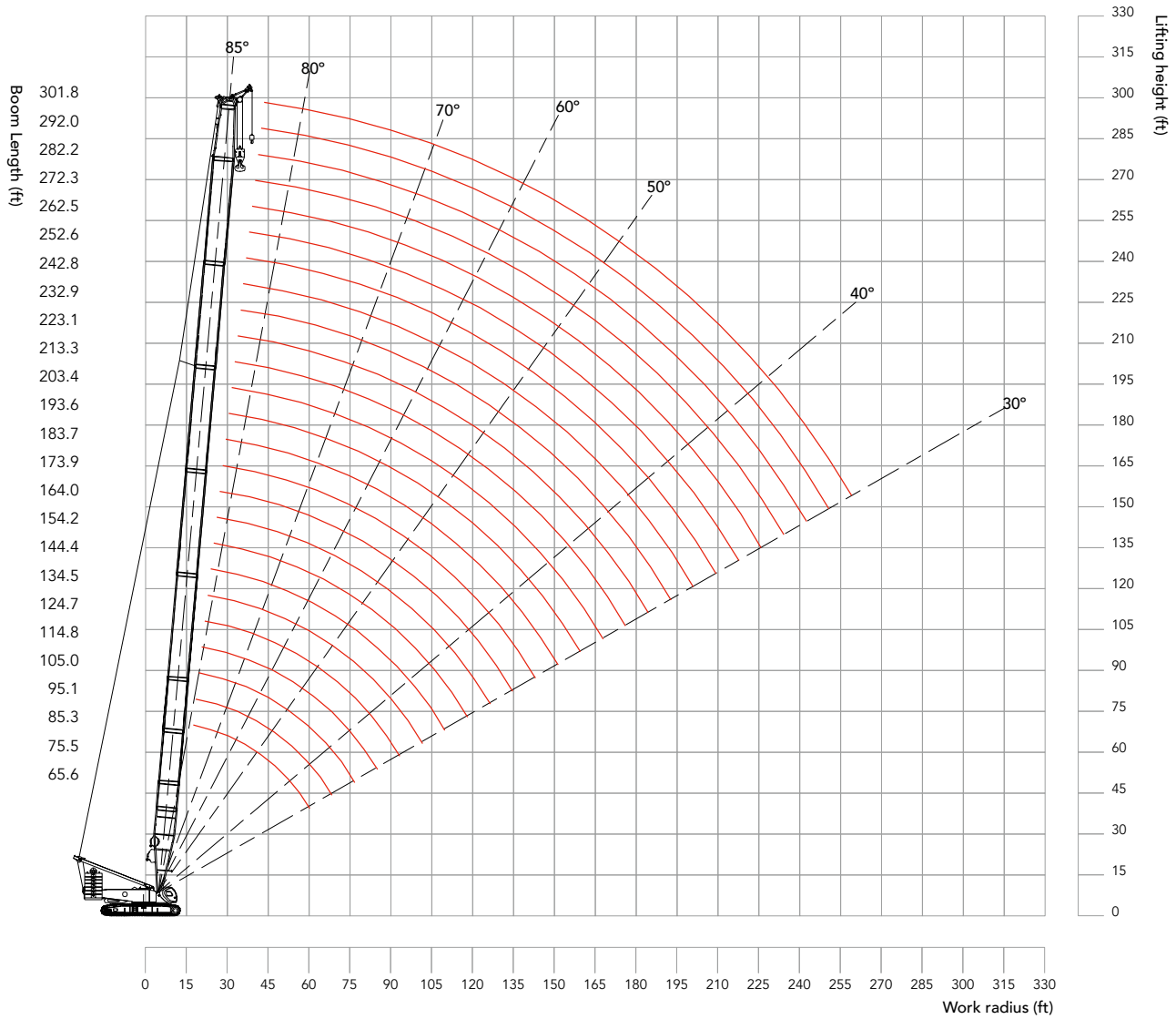
## H Configuration

H Configuration			
Boom length (m)	Insert		
	9.8ft (3m)	19.7ft (6m)	39.4ft (12m)
65.6 (20)	1	-	-
75.5 (23)	-	1	-
85.3 (26)	1	1	-
95.1 (29)	-	-	1
105 (32)	1	-	1
114.8 (35)	-	1	1
124.7 (38)	1	1	1
134.5 (41)	-	-	2
144.4 (44)	1	-	2
154.2 (47)	-	1	2
164 (50)	1	1	2
173.9 (53)	-	-	3
183.7 (56)	1	-	3
193.6 (59)	-	1	3
203.4 (62)	1	1	3
213.3 (65)	-	-	4
223.1 (68)	1	-	4
232.9 (71)	-	1	4
242.8 (74)	1	1	4
252.6 (77)	-	-	5
262.5 (80)	1	-	5
272.3 (83)	-	1	5
282.2 (86)	1	1	5
292 (89)	-	2	5
301.8 (92)	1	2	5

Note: 65.6ft (20m) basic boom consists of 32.8ft (10m) boom section, 9.8ft (3m) boom insert, 19.7ft (6m) transition section and 1m boom head.



## H Working Radius



## H Load Chart

SCA2600A Crawler Crane -H														
Boom length 65.6-301.8 ft; Rear Counterweight 220.5Klb; Carbody Counterweight 88.2Klb														
Radius (ft) \ Boom length (ft)	65.6	75.5	85.3	95.1	105	114.8	124.7	134.5	144.4	154.2	164	173.9	183.7	Boom length (ft) \ Radius (ft)
16.4	600.0													16.4
20	519.4	492.3	488.7	447.7	423.8									20
25	425.1	417.3	407.4	393.4	373.4	357.4	352.0	325.9						25
30	339.2	333.1	324.8	316.1	310.3	310.0	307.1	285.5	266.9	258.6	250.9	246.4	244.0	30
35	288.5	282.0	278.6	273.2	269.9	269.1	265.6	260.1	245.0	243.2	229.3	224.5	202.1	35
40	238.5	234.5	233.5	232.8	232.1	233.2	228.7	222.5	222.3	217.3	212.5	208.2	198.1	40
45	203.8	201.7	200.2	199.3	198.2	198.4	197.3	196.1	194.3	190.4	186.4	182.9	178.0	45
50	177.0	175.7	174.6	173.8	172.4	172.2	173.7	171.6	170.8	169.3	165.8	162.7	159.3	50
55	155.5	154.4	153.5	152.7	151.8	151.7	152.9	151.1	150.6	150.4	148.5	145.9	142.9	55
60		137.1	135.8	135.2	135.2	135.6	134.3	134.9	133.6	133.4	133.6	131.6	128.9	60
65		123.2	122.2	121.6	121.5	122.0	121.6	121.2	120.9	120.7	120.3	119.4	116.9	65
70		113.2	111.9	111.1	110.8	111.0	110.8	110.5	110.1	109.9	109.4	109.2	107.0	70
75			102.9	102.0	101.5	101.4	101.1	100.9	100.4	100.2	99.7	100.2	98.2	75
80				94.1	93.3	93.2	92.7	92.5	91.9	91.9	91.4	92.1	90.4	80
85				86.7	86.4	86.6	86.2	86.2	84.3	84.8	84.6	84.5	83.3	85
90					79.7	79.9	79.5	79.3	78.3	78.5	77.9	77.6	76.8	90
95					73.4	73.7	73.2	73.0	72.5	72.4	71.7	71.3	70.6	95
100						68.1	67.6	67.4	67.0	66.7	66.1	65.6	65.0	100
105						63.1	62.6	62.4	61.9	61.7	61.1	60.6	60.0	105
110							58.2	58.0	57.5	57.3	56.6	56.2	55.5	110
115								54.0	53.8	53.3	52.6	52.3	51.5	115
120									50.5	50.2	49.0	48.7	47.9	120
125									47.6	48.4	45.8	45.3	44.7	125
130									44.8	45.3	43.5	42.9	42.4	130
135										41.4	40.7	40.3	40.0	135
140											38.3	38.0	37.6	140
145												36.1	35.5	145
150												33.9	33.5	150
155													30.9	155
160													28.8	160
165														165
170														170
175														175
180														180
185														185
190														190
195														195
200														200
205														205
210														210
215														215
220														220

- Note: 1. The rated load in the load chart is calculated complying with ASME B30.5;  
 2. The working radius is the horizontal distance from the load center to the swing center;  
 3. The actual lifting capacity must subtract the weight of hooks and other riggings from the rated capacity in the load chart.  
 4. The load value is calculated when the object is hung freely, without considering the influence of wind on the load, ground conditions and slope, operation speed and the influence of any other negative factors over safe operation. Therefore, the operator bears the responsibility of making a judgement and decreasing the load and lowering speed.  
 5. All ratings are calculated when the machine is parking on firm and level ground with less than 1% gradient.

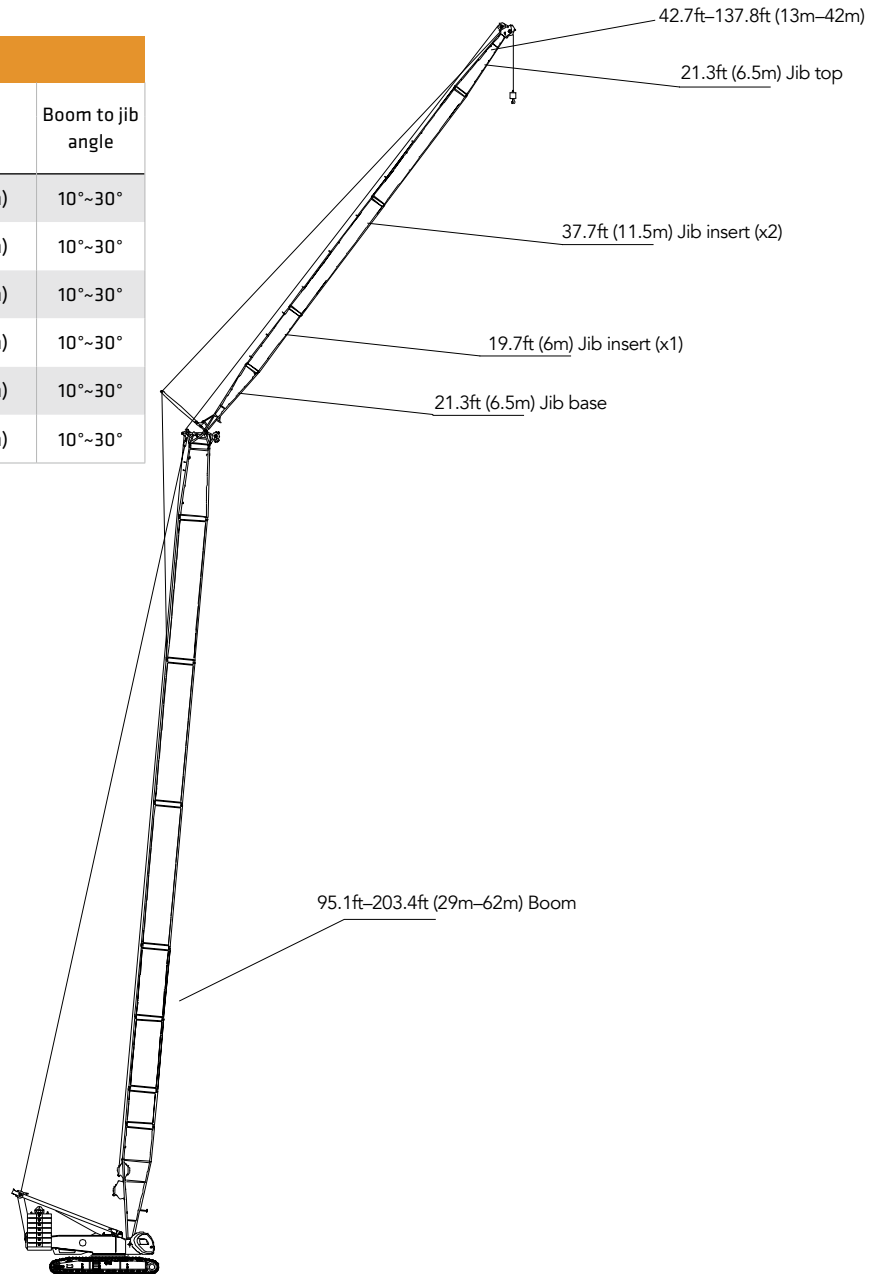
**H Load Chart**

SCA2600A Crawler Crane -H													
Boom length 65.6-301.8 ft; Rear Counterweight 220.5Klb; Carbody Counterweight 88.2Klb													
Radius (ft) \ Boom length (ft)	193.6	203.4	213.3	223.1	232.9	242.8	252.6	262.5	272.3	282.2	292	301.8	Boom length (ft) \ Radius (ft)
16.4													16.4
20													20
25													25
30	243.3	215.0	215.0										30
35	196.3	195.2	188.3	184.3	171.6	169.2	166.8						35
40	190.2	186.5	167.6	160.2	147.3	139.8	132.0	130.6	128.5	128.3	126.3	119.5	40
45	174.2	168.4	162.2	158.6	144.2	133.9	122.7	116.8	115.3	113.0	112.7	104.2	45
50	156.6	152.4	149.3	146.2	139.3	125.3	117.2	109.3	107.8	104.7	99.3	93.2	50
55	140.6	137.7	135.1	132.3	130.2	119.3	111.0	103.9	102.5	95.6	87.2	81.8	55
60	126.9	124.2	121.9	119.5	117.5	114.9	104.0	99.4	97.3	85.0	77.0	70.3	60
65	115.2	112.7	110.6	108.4	106.7	104.5	101.5	95.2	87.9	79.7	69.5	64.2	65
70	105.4	103.1	101.2	99.2	97.6	95.4	93.7	90.0	82.7	73.5	62.7	58.0	70
75	96.6	94.5	92.8	90.8	89.4	87.3	85.7	83.7	79.1	69.8	59.0	54.2	75
80	88.9	86.9	85.4	83.4	82.1	80.2	78.6	76.9	75.6	67.5	57.6	52.2	80
85	82.2	80.2	78.9	76.9	75.8	74.0	72.5	70.7	69.6	63.5	55.9	50.1	85
90	76.3	74.5	73.0	71.3	70.2	68.5	67.0	65.3	64.2	61.2	54.1	48.6	90
95	70.4	69.2	67.7	66.1	65.0	63.3	61.9	60.3	59.2	57.6	52.2	47.3	95
100	64.8	64.1	62.9	61.2	60.3	58.7	57.3	55.8	54.7	53.2	50.1	46.0	100
105	59.7	59.1	58.4	56.9	56.0	54.5	53.1	51.6	50.7	49.2	47.8	44.3	105
110	55.3	54.7	54.2	53.0	52.1	50.6	49.4	47.8	47.0	45.4	44.3	42.3	110
115	51.3	50.7	50.2	49.3	48.6	47.1	46.0	44.4	43.5	42.1	41.0	39.5	115
120	47.6	47.0	46.5	45.7	45.2	43.8	42.7	41.2	40.3	39.0	37.9	36.4	120
125	44.3	43.5	43.0	42.3	41.9	40.8	39.7	38.2	37.5	36.0	34.9	33.5	125
130	41.3	40.8	39.9	39.2	38.8	38.0	37.0	35.5	34.8	33.3	32.3	30.8	130
135	38.9	38.5	37.3	36.6	36.1	35.2	34.5	32.9	32.3	30.8	29.8	28.4	135
140	36.8	36.3	34.9	34.3	33.7	32.6	32.1	30.6	29.9	28.6	27.5	26.2	140
145	34.8	33.9	32.6	32.1	31.7	30.1	29.7	28.5	27.8	26.4	25.4	24.1	145
150	32.4	31.4	30.6	29.9	29.5	28.0	27.5	26.4	25.8	24.2	23.3	22.0	150
155	30.6	29.7	28.7	28.3	27.9	25.9	25.5	24.4	23.7	22.3	21.4	20.1	155
160	29.0	28.0	27.0	26.8	26.2	24.0	23.5	22.6	21.9	20.6	19.7	18.4	160
165	27.3	26.2	25.4	25.0	24.3	22.2	21.5	20.8	20.2	18.9	18.0	16.7	165
170	25.6	24.5	23.3	22.9	22.2	20.5	19.8	18.9	18.5	17.2	16.3	15.0	170
175		23.1	22.4	21.5	20.0	18.8	18.3	17.4	17.0	15.7	14.8	13.5	175
180			21.1	20.3	19.1	17.2	16.8	15.9	15.6	14.2	13.3	12.0	180
185				19.0	18.8	15.7	15.3	14.4	14.2	12.9	12.0	10.7	185
190				17.5	17.3	14.4	14.0	13.1	12.9	11.6	10.7	9.4	190
195				16.0	15.9	13.2	12.6	11.7	11.5	10.3	9.4	8.1	195
200					14.3	11.9	11.4	10.5	10.3	9.2	8.3	7.0	200
205						10.7	10.2	9.4	9.1	8.0	7.1	5.9	205
210						9.7	9.0	8.4	7.9	6.8	6.0	4.9	210
215							8.0	7.2	6.9	5.8	4.9	-	215
220							7.0	6.1	5.9				220

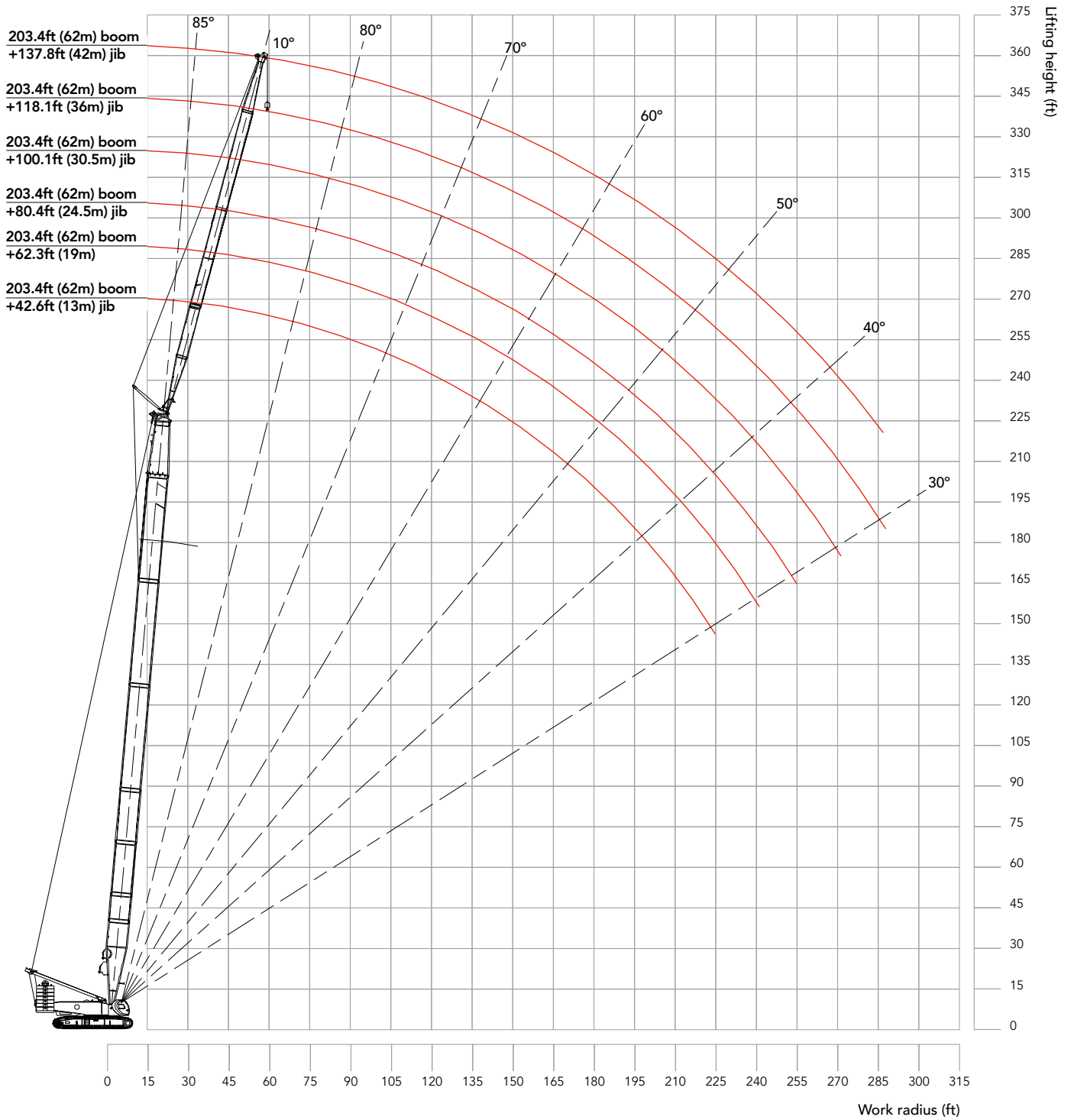
- Note: 1. The rated load in the load chart is calculated complying with ASME B30.5;  
 2. The working radius is the horizontal distance from the load center to the swing center;  
 3. The actual lifting capacity must subtract the weight of hooks and other riggings from the rated capacity in the load chart.  
 4. The load value is calculated when the object is hung freely, without considering the influence of wind on the load, ground conditions and slope, operation speed and the influence of any other negative factors over safe operation. Therefore, the operator bears the responsibility of making a judgement and decreasing the load and lowering speed.  
 5. All ratings are calculated when the machine is parking on firm and level ground with less than 1% gradient.

## FJ Configuration

Fixed Jib				
Jib Length ft (m)	Insert		Boom Length ft (m)	Boom to jib angle
	16.7ft (6m)	37.7ft (11.5m)		
42.7 (13)	-	-	95.1ft (29m)~203.4ft (62m)	10°~30°
62.3 (19)	1	-	95.1ft (29m)~203.4ft (62m)	10°~30°
80.4 (24.5)	-	1	95.1ft (29m)~203.4ft (62m)	10°~30°
100.1 (30.5)	1	1	95.1ft (29m)~203.4ft (62m)	10°~30°
118.1 (36)	-	2	95.1ft (29m)~203.4ft (62m)	10°~30°
137.8 (42)	1	2	95.1ft (29m)~203.4ft (62m)	10°~30°



**FJ Working Radius**





**FJ Load Chart**

SCA2600A Fixed Jib (without boom tip sheave block)														
Fixed jib 42.7 ft														
Boom length Radius Ft.	95.1ft		105ft		114.8ft		124.7ft		134.5ft		144.4ft		Boom length Radius Ft.	
	10°	30°	10°	30°	10°	30°	10°	30°	10°	30°	10°	30°		
30	141.5	-	-	-	-	-	-	-	-	-	-	-	30	
35	138.2	-	139.3	-	140.7	-	140.5	-	-	-	-	-	35	
40	129.5	-	133.5	-	137.0	-	135.5	-	138.4	-	141.3	-	40	
45	119.0	-	122.9	-	126.6	-	125.1	-	128.1	-	131.6	-	45	
50	110.0	59.1	113.9	59.7	117.6	60.6	116.7	60.0	119.8	-	120.5	-	50	
55	102.1	56.6	106.0	57.2	109.7	58.1	109.4	57.8	110.7	58.3	109.3	59.0	55	
60	95.1	54.1	99.1	54.9	102.4	55.8	102.1	55.6	100.6	56.4	98.6	57.0	60	
65	89.2	51.9	93.0	52.9	94.7	53.8	93.0	53.6	91.4	54.4	89.6	55.1	65	
70	84.0	50.0	87.2	51.1	87.1	51.9	85.2	51.9	83.7	52.7	82.1	53.4	70	
75	79.0	48.3	80.4	49.4	79.8	50.3	78.3	50.3	76.9	51.1	75.3	51.8	75	
80	73.6	46.6	74.0	47.7	74.7	48.8	74.7	48.8	70.9	49.7	70.1	50.3	80	
85	67.5	45.3	71.3	46.4	75.3	47.3	78.8	47.5	65.4	48.4	68.2	49.0	85	
90	65.2	43.9	68.8	45.0	69.7	46.1	73.2	46.1	66.1	47.0	66.2	47.8	90	
95	63.1	42.7	64.6	43.8	66.1	44.9	67.5	44.9	63.3	45.8	64.1	46.7	95	
100	61.1	41.6	60.5	42.7	63.0	43.8	63.2	43.8	60.0	44.7	61.2	45.6	100	
105	59.3	40.6	58.7	41.7	58.5	42.8	60.9	42.8	60.5	43.7	56.7	44.5	105	
110	55.2	39.8	56.0	40.9	55.7	41.7	56.7	42.0	56.2	42.8	54.8	43.7	110	
115		39.0	52.7	40.0	53.0	40.8	52.8	41.1	52.4	41.9	53.0	42.8	115	
120			49.2	39.2	50.0	40.1	49.4	40.3	49.5	41.1	50.7	42.0	120	
125					46.7	39.5	46.6	39.7	47.9	40.3	47.2	41.2	125	
130					43.6	38.9	43.5	39.0	44.8	39.6	44.0	40.5	130	
135						38.4	41.6	38.4	41.9	39.1	41.2	39.8	135	
140								37.9	39.2	38.6	38.6	38.8	140	
145										37.8	36.1	37.2	145	
150										35.3	33.7	34.8	150	
155												32.5	155	
160													160	
165													165	
170													170	
175													175	
180													180	
185													185	
190													190	
195													195	
200													200	

**FJ Load Chart**

SCA2600A Fixed Jib (without boom tip sheave block)														
Fixed jib 42.7 ft														
Boom length Radius Ft.	154.2ft		164ft		173.9ft		183.7ft		193.6ft		203.4ft		Boom length Boom to jib angle Radius Ft.	
	10°	30°	10°	30°	10°	30°	10°	30°	10°	30°	10°	30°		
30													30	
35													35	
40	140.4		140.6		129.2		129.0						40	
45	132.1		129.8		125.9		123.8						45	
50	119.4		116.9		114.7		112.5		110.4		108.2		50	
55	107.2	60.5	105.1	60.9	103.1	61.5	101.1	61.9	99.3		97.3		55	
60	96.8	58.6	95.0	59.0	93.2	59.7	91.3	60.1	89.8	60.5	87.9	60.8	60	
65	88.1	56.6	86.3	57.3	84.7	58.0	83.0	58.4	81.5	58.8	79.9	59.3	65	
70	80.7	55.1	79.0	55.8	77.5	56.3	79.2	56.9	77.8	57.3	79.3	57.8	70	
75	76.0	53.6	74.4	54.2	73.1	54.8	74.3	55.3	73.0	55.9	75.9	56.3	75	
80	73.5	52.1	71.9	52.8	69.9	53.4	69.1	53.9	68.3	54.5	70.5	55.0	80	
85	71.1	50.8	69.6	51.5	64.5	52.1	66.6	52.8	67.7	53.2	67.9	53.9	85	
90	69.1	49.4	66.4	50.3	62.9	50.9	64.5	51.6	66.5	52.2	67.8	52.7	90	
95	65.2	48.3	63.0	49.1	60.9	49.7	62.4	50.4	64.6	51.1	64.8	51.6	95	
100	61.3	47.2	59.2	48.0	59.5	48.6	60.3	49.3	61.7	50.0	60.1	50.6	100	
105	59.5	46.1	55.2	47.0	60.0	47.6	58.4	48.3	57.3	48.9	55.8	49.6	105	
110	55.1	45.3	55.8	45.9	55.9	46.6	54.3	47.5	53.4	47.9	51.9	48.6	110	
115	51.3	44.4	53.3	45.0	52.2	45.7	50.7	46.5	49.8	47.0	48.3	47.7	115	
120	48.4	43.6	49.6	44.2	48.7	44.9	47.3	45.6	46.4	46.2	44.9	46.5	120	
125	46.8	42.7	46.1	43.4	45.4	44.1	44.3	44.9	43.2	45.2	41.9	44.6	125	
130	43.7	41.9	42.9	42.7	42.4	43.4	41.3	43.4	40.4	42.7	39.1	41.5	130	
135	40.8	41.2	40.1	41.1	39.5	41.2	38.7	40.7	37.8	40.1	36.5	38.8	135	
140	38.1	39.6	37.5	38.9	36.8	38.5	36.2	37.8	35.4	37.5	34.1	36.2	140	
145	35.6	37.0	35.0	36.3	34.3	35.9	33.7	35.2	33.0	35.0	31.7	33.7	145	
150	33.5	34.6	32.6	33.9	32.1	33.5	31.3	32.8	30.8	32.6	29.5	31.5	150	
155	31.3	32.4	30.5	31.7	30.0	31.3	29.1	30.6	28.8	30.4	27.5	29.3	155	
160		30.2	28.5	29.6	28.0	29.2	27.1	28.5	26.8	28.3	25.5	27.2	160	
165			26.5	27.6	26.1	27.2	25.2	26.5	24.8	26.3	23.7	25.3	165	
170			24.7	25.6	24.2	25.3	23.3	24.7	23.1	24.2	22.0	23.6	170	
175					22.5	23.5	21.8	22.8	21.4	22.5	20.5	21.9	175	
180							20.3	21.2	19.8	20.9	19.0	20.3	180	
185								19.7	18.4	19.4	17.5	18.6	185	
190								18.0	17.1	18.0	16.2	17.1	190	
195										16.5	14.8	15.7	195	
200												14.3	200	

## Fj Load Chart

SCA2600A Fixed Jib (without boom tip sheave block)														
Fixed jib 100.1ft														
Boom length Radius Ft.	95.1ft		105ft		114.8ft		124.7ft		134.5ft		144.4ft		Boom length Radius Ft.	
	10°	30°	10°	30°	10°	30°	10°	30°	10°	30°	10°	30°		
50	72.6												50	
55	67.2		68.9		69.8		67.2		66.6		68.5		55	
60	61.0		63.0		64.9		64.6		64.9		66.9		60	
65	55.7		57.6		59.6		60.9		61.7		63.7		65	
70	51.8		53.2		55.3		56.7		57.7		59.8		70	
75	47.9		49.4		51.4		52.6		54.0		55.9		75	
80	44.4	30.3	46.2	30.6	47.9	30.8	48.9		50.6		52.4		80	
85	41.5	29.2	43.2	29.4	44.5	29.9	46.2		47.5		49.1		85	
90	39.0	28.2	40.7	28.4	42.1	28.8	43.5	28.3	45.0	28.5	46.2	28.7	90	
95	36.7	27.2	38.3	27.5	39.8	27.8	41.1	27.4	42.3	27.7	43.8	27.9	95	
100	34.6	26.2	36.1	26.6	37.5	26.8	38.8	26.5	39.9	26.8	41.6	27.1	100	
105	32.9	25.4	34.2	25.6	35.4	26.0	36.7	25.8	37.9	26.0	39.5	26.5	105	
110	31.1	24.6	32.4	24.9	33.7	25.3	34.8	25.0	36.1	25.3	37.7	25.7	110	
115	29.6	23.7	30.8	24.2	32.2	24.5	33.1	24.1	34.5	24.7	36.0	24.9	115	
120	28.2	22.9	29.3	23.5	30.7	23.8	31.6	23.3	33.0	24.0	34.3	24.2	120	
125	26.7	22.5	28.0	22.9	29.2	23.4	30.2	22.5	31.5	23.1	32.8	23.5	125	
130	25.6	21.8	26.9	22.2	28.1	22.7	29.1	21.8	30.2	22.4	31.6	22.7	130	
135	25.1	21.2	25.7	21.7	26.9	22.1	27.8	21.1	29.0	21.7	30.2	22.0	135	
140	24.5	20.7	24.9	21.2	25.8	21.6	26.6	20.4	27.9	20.9	28.9	21.3	140	
145	23.6	20.2	24.7	20.6	24.7	21.1	25.5	19.7	26.7	20.2	27.8	20.6	145	
150	22.8	19.7	23.9	20.2	23.7	20.6	24.7	19.1	25.7	19.7	26.8	19.9	150	
155	22.0	19.2	23.2	19.7	22.9	20.1	23.8	18.7	24.8	19.0	25.9	19.6	155	
160	21.4	18.8	22.5	19.2	22.0	19.6	22.9	18.2	23.9	18.5	24.8	19.1	160	
165		18.4	21.7	18.9	21.2	19.3	22.1	17.5	23.1	18.2	23.5	18.6	165	
170		18.1	20.9	18.5	20.6	19.0	21.3	17.2	22.4	17.7	22.2	18.2	170	
175		17.8		18.2	19.8	18.7	20.7	17.1	22.4	17.3	21.8	17.8	175	
180				17.9		18.3	20.0	16.8	21.7	17.1	21.6	17.4	180	
185						18.1	19.1	16.5	20.5	16.9	21.1	17.1	185	
190						17.9	18.5	16.3	19.3	16.5	20.0	16.8	190	
195								16.2	19.0	16.4	18.8	16.6	195	
200										16.2	17.7	16.4	200	
205												16.3	205	
210												16.1	210	
215												16.1	215	
220													220	
225													225	
230													230	
235													235	
240													240	
245													245	
250													250	
255													255	

**FJ Load Chart**

SCA2600A Fixed Jib (without boom tip sheave block)														
Fixed jib 100.1ft														
Boom length Radius Ft.	154.2ft		164ft		173.9ft		183.7ft		193.6ft		203.4ft		Boom length Radius Ft.	
	10°	30°	10°	30°	10°	30°	10°	30°	10°	30°	10°	30°		
50													50	
55	67.1		65.7										55	
60	66.1		64.8		63.3		61.7		60.1		58.6		60	
65	64.9		63.8		62.4		60.9		59.5		58.0		65	
70	61.3		61.7		61.6		60.2		58.7		57.2		70	
75	57.3		58.5		59.4		59.3		58.0		56.6		75	
80	53.6		54.9		56.2		57.6		57.0		55.9		80	
85	50.5		52.0		53.3		54.3		55.7		55.1		85	
90	48.0	29.7	49.2	29.9	50.4	30.1	51.4		53.0		52.5		90	
95	45.5	28.8	46.4	29.1	47.8	29.4	48.9	29.6	50.0	29.8	49.2	30.0	95	
100	43.1	28.0	44.0	28.4	45.4	28.6	46.6	28.8	47.0	29.0	45.8	29.2	100	
105	40.8	27.3	42.0	27.6	43.2	27.8	44.5	28.0	43.8	28.2	42.8	28.4	105	
110	39.0	26.7	40.1	26.9	41.3	27.1	41.8	27.3	41.0	27.7	40.0	27.9	110	
115	37.2	26.0	38.4	26.2	39.4	26.4	39.3	26.8	38.5	27.1	37.5	27.3	115	
120	35.5	25.3	36.7	25.6	37.5	25.8	36.8	26.2	36.0	26.4	35.0	26.7	120	
125	34.1	24.7	35.0	25.1	35.6	25.4	34.5	25.6	33.8	25.8	32.8	26.2	125	
130	32.5	24.1	33.6	24.4	33.4	24.8	32.4	25.0	31.8	25.2	30.8	25.5	130	
135	31.2	23.7	32.1	23.9	31.5	24.3	30.5	24.6	29.9	24.8	28.9	25.0	135	
140	30.1	23.2	30.5	23.4	29.6	23.8	28.6	24.1	28.0	24.3	27.0	24.6	140	
145	28.9	22.6	28.7	22.8	27.9	23.3	26.9	23.5	26.3	23.8	25.5	24.2	145	
150	27.6	22.1	27.1	22.4	26.3	22.8	25.4	23.0	24.8	23.5	25.1	23.7	150	
155	26.1	21.6	25.6	22.0	24.8	22.3	23.9	22.7	24.2	23.0	24.6	23.2	155	
160	24.5	21.2	24.0	21.6	23.4	21.8	23.0	22.2	23.8	22.5	24.0	22.7	160	
165	23.1	20.8	22.5	21.1	22.3	21.5	22.7	21.7	23.3	22.2	23.1	22.4	165	
170	21.8	20.5	21.2	20.7	22.0	21.2	22.3	21.4	22.9	21.8	22.4	22.0	170	
175	21.4	20.2	19.9	20.4	21.7	20.9	21.2	21.1	22.1	21.4	22.3	21.7	175	
180	21.2	19.9	18.7	20.1	21.2	20.5	20.6	20.7	21.6	21.0	21.4	21.4	180	
185	20.7	19.5	17.6	19.7	20.5	20.2	20.7	20.4	21.0	20.7	19.9	21.1	185	
190	19.4	19.2	16.6	19.4	19.9	19.8	20.5	20.1	19.7	20.5	18.6	20.7	190	
195	18.4	18.8	15.6	19.3	19.7	19.5	19.2	19.7	18.5	20.2	17.3	20.0	195	
200	17.8	18.6	15.1	19.0	18.9	19.2	18.0	19.5	17.2	19.7	16.0	19.0	200	
205	17.3	18.4	14.7	18.7	17.7	18.9	16.8	19.0	16.0	18.8	14.8	17.7	205	
210	16.8	18.1	13.8	18.5	16.5	18.5	15.7	17.9	15.0	17.4	13.7	16.5	210	
215		17.9	12.8	17.5	15.3	17.3	14.6	16.7	13.8	16.2	12.6	15.2	215	
220		17.1		16.4	14.3	16.2	13.6	15.5	12.7	15.1	11.6	14.1	220	
225				15.3		15.0	12.6	14.3	11.7	13.9	10.6	13.0	225	
230						13.8		13.1	10.7	12.7	9.6	11.8	230	
235						12.8		12.1	9.9	11.7	8.8	10.8	235	
240								11.2	9.1	10.7	8.0	9.9	240	
245										9.7	7.1	8.8	245	
250												7.8	250	
255												7.0	255	

## FJ Load Chart

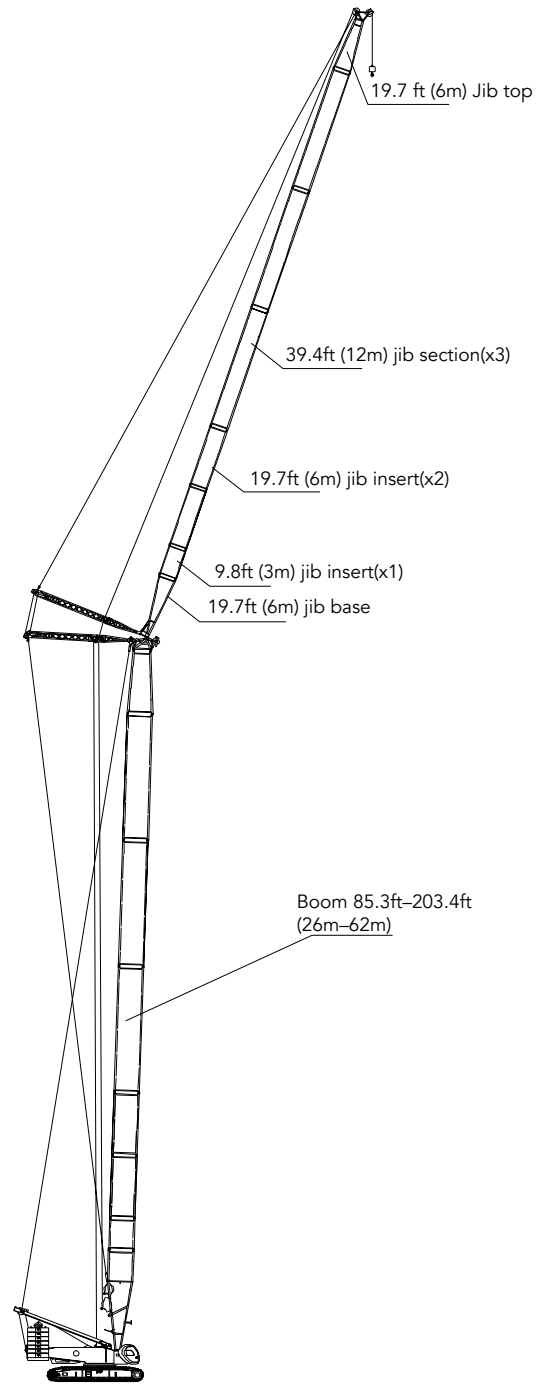
SCA2600A Fixed Jib (without boom tip sheave block)														
Fixed jib 137.8 ft														
Boom length Radius Ft.	95.1ft		105ft		114.8ft		124.7ft		134.5ft		144.4ft		Boom length Radius Ft.	
	10°	30°	10°	30°	10°	30°	10°	30°	10°	30°	10°	30°		
60	38.2		38.3		37.7		36.3						60	
65	37.1		37.3		36.8		35.5						65	
70	36.1		36.3		35.9		34.6			35.8		34.4	70	
75	35.2		35.4		35.0		33.7			35.0		33.7	75	
80	34.0		34.3		34.2		32.9			34.2		32.9	80	
85	31.8		32.8		33.4		32.1			33.4		32.1	85	
90	29.8		30.6		31.5		31.4			32.6		31.4	90	
95	28.0		28.8		29.8		30.1			31.8		30.7	95	
100	26.3		27.3		28.0		28.6			30.8		29.9	100	
105	24.8	22.0	25.6	22.5	26.3	22.7	27.1	21.8	29.1	22.0	28.6	22.3	105	
110	23.5	21.2	24.2	21.7	24.9	21.9	25.9	21.1	27.7	21.4	27.4	21.6	110	
115	22.3	20.5	23.0	20.9	23.7	21.1	24.6	20.6	26.3	20.8	26.1	20.9	115	
120	21.4	19.8	22.2	20.2	22.6	20.4	23.3	20.0	25.0	20.2	24.8	20.3	120	
125	21.2	19.2	21.9	19.6	21.6	19.8	22.1	19.4	23.6	19.6	23.5	19.8	125	
130	20.3	18.6	20.9	19.1	20.6	19.3	21.1	18.8	22.7	19.1	22.5	19.3	130	
135	19.9	18.2	20.0	18.6	20.0	18.8	20.2	18.4	21.8	18.6	21.7	18.8	135	
140	19.4	17.7	19.2	18.1	19.4	18.3	19.4	17.9	20.8	18.1	20.7	18.3	140	
145	18.6	17.1	18.4	17.5	18.6	17.8	18.6	17.3	19.8	17.6	19.7	17.9	145	
150	17.8	16.6	17.6	17.1	17.8	17.3	17.8	16.9	19.2	17.3	19.1	17.5	150	
155	17.2	16.1	16.9	16.6	17.2	17.0	17.1	16.5	18.5	16.8	18.4	17.0	155	
160	16.4	15.6	16.2	16.1	16.5	16.5	16.3	16.1	17.7	16.3	17.6	16.6	160	
165	15.6	15.1	15.4	15.6	15.7	16.0	15.6	15.8	16.9	16.0	16.9	16.2	165	
170	15.1	14.7	14.7	15.1	15.1	15.5	15.1	15.4	16.3	15.7	16.3	15.9	170	
175	14.5	14.3	14.1	14.7	14.5	15.1	14.5	15.1	15.7	15.4	15.7	15.6	175	
180	13.9	13.9	13.7	14.4	14.0	14.7	13.9	14.7	15.2	15.0	15.1	15.2	180	
185	13.4	13.6	13.3	14.0	13.5	14.2	13.5	14.3	14.7	14.7	14.6	15.0	185	
190	12.9	13.0	12.7	13.4	13.1	13.9	12.9	14.1	14.1	14.3	14.1	14.8	190	
195	12.4	12.7	12.3	13.1	12.6	13.4	12.5	13.6	13.6	14.0	13.7	14.4	195	
200		12.4	11.9	12.8	12.2	13.1	12.2	13.2	13.2	13.7	13.3	14.1	200	
205		12.0		12.5	11.8	12.9	11.7	13.0	12.7	13.3	12.7	13.8	205	
210		11.7		12.1	11.3	12.6	11.2	12.8	12.2	13.0	12.2	13.4	210	
215				11.9		12.2	11.0	12.4	11.8	12.8	12.0	13.1	215	
220				11.7		12.0		12.1	11.5	12.5	11.6	12.9	220	
225						11.8		11.8	11.2	12.2	11.3	12.7	225	
230								11.7		11.9	10.9	12.3	230	
235								11.3		11.7	10.5	12.0	235	
240										11.6		11.8	240	
245												11.6	245	
250													250	
255													255	
260													260	
265													265	
270													270	
275													275	
280													280	
285													285	

**FJ Load Chart**

SCA2600A Fixed Jib (without boom tip sheave block)														
Fixed jib 137.8 ft														
Boom length Radius Ft.	154.2ft		164ft		173.9ft		183.7ft		193.6ft		203.4ft		Boom length Boom to jib angle Radius Ft.	
	10°	30°	10°	30°	10°	30°	10°	30°	10°	30°	10°	30°		
60													60	
65													65	
70	35.2		35.0		34.7		36.6						70	
75	34.6		34.4		34.1		36.0		33.4		33.1		75	
80	33.9		33.7		33.4		35.3		32.9		32.6		80	
85	33.1	-	32.9		32.7		34.7		32.2		32.1		85	
90	32.5		32.3		32.1		34.1		31.8		31.5		90	
95	31.8		31.7		31.6		33.6		31.3		31.1		95	
100	31.0		31.1		31.1		33.0		30.8		30.6		100	
105	29.8	22.9	30.4		30.4		32.3		30.4		30.1		105	
110	28.1	22.2	29.0		29.6		31.8		29.8		29.6		110	
115	26.9	21.7	27.8	21.9	28.3	22.0	30.9	22.1	29.2	22.3	29.1	22.3	115	
120	25.8	21.2	26.5	21.3	27.0	21.4	29.7	21.6	28.4	21.8	28.6	21.8	120	
125	24.5	20.7	25.2	20.7	26.0	20.9	28.3	21.2	27.2	21.4	27.8	21.4	125	
130	23.4	20.0	24.1	20.2	24.8	20.4	27.1	20.6	26.1	20.8	26.6	20.8	130	
135	22.4	19.5	23.1	19.7	23.8	19.9	26.0	20.1	25.1	20.4	25.6	20.5	135	
140	21.4	19.0	22.1	19.3	22.9	19.5	25.0	19.6	24.1	19.9	24.6	20.1	140	
145	20.6	18.6	21.2	18.9	22.1	19.1	24.1	19.2	23.0	19.4	23.5	19.6	145	
150	19.8	18.2	20.4	18.4	21.2	18.6	23.3	18.8	22.2	19.1	22.8	19.3	150	
155	19.1	17.8	19.6	18.1	20.4	18.3	22.4	18.5	21.4	18.7	22.0	18.8	155	
160	18.3	17.4	18.9	17.6	19.5	17.8	21.5	18.0	20.7	18.3	21.0	18.3	160	
165	17.6	16.9	18.3	17.1	18.7	17.3	20.6	17.5	20.2	17.8	20.1	18.0	165	
170	17.1	16.5	17.6	16.8	18.1	17.0	19.9	17.2	20.5	17.4	18.8	17.6	170	
175	16.5	16.2	17.0	16.5	17.6	16.7	19.3	16.9	19.6	17.1	17.7	17.3	175	
180	15.9	15.9	16.4	16.1	17.0	16.3	18.7	16.6	18.5	16.8	16.6	17.0	180	
185	15.3	15.6	15.9	15.9	16.4	16.1	17.9	16.3	17.3	16.5	15.4	16.7	185	
190	14.9	15.2	15.4	15.7	15.9	15.9	17.0	16.1	16.3	16.3	14.5	16.5	190	
195	14.3	15.1	14.8	15.2	15.4	15.5	16.0	15.8	15.3	16.0	13.5	16.2	195	
200	13.9	14.7	14.4	14.8	14.8	15.2	15.0	15.5	14.4	15.7	12.7	15.9	200	
205	13.5	14.2	14.0	14.5	14.1	14.9	14.0	15.2	13.5	15.3	11.8	15.6	205	
210	13.1	13.9	13.6	14.1	13.2	14.6	13.2	15.0	12.5	15.0	10.9	15.2	210	
215	12.6	13.7	12.9	13.9	12.4	14.2	12.3	14.7	11.7	14.7	10.1	15.0	215	
220	12.1	13.4	12.2	13.6	11.7	13.9	11.4	14.2	10.9	14.4	9.4	14.8	220	
225	11.7	13.1	11.4	13.3	10.9	13.6	10.7	13.8	10.1	14.2	8.6	14.5	225	
230	11.2	12.8	10.7	13.2	10.3	13.2	10.0	13.7	9.3	13.9	7.9	14.0	230	
235	10.5	12.6	10.0	12.9	9.5	13.0	9.2	13.3	8.6	13.7	7.2	13.0	235	
240	9.9	12.3	9.3	12.7	8.8	12.9	8.5	13.0	8.0	12.9	6.6	12.1	240	
245		12.0	8.6	12.4	8.1	12.6	7.8	12.4	7.3	11.9	6.0	11.0	245	
250		11.7		12.0	7.5	12.2	7.1	11.6	6.6	10.9	5.4	10.0	250	
255		11.7		11.6	7.0	11.2	6.6	10.6	5.9	10.1	4.7	9.2	255	
260				10.8		10.3	5.9	9.7	5.4	9.1	4.2	8.2	260	
265				10.0			9.5	8.9	4.8	8.2	3.7	7.3	265	
270							8.6	8.0	4.3	7.3	3.2	6.4	270	
275							7.8	7.2	3.8	6.5	2.7	5.6	275	
280								6.4		5.8		4.9	280	
285										5.0		4.1	285	

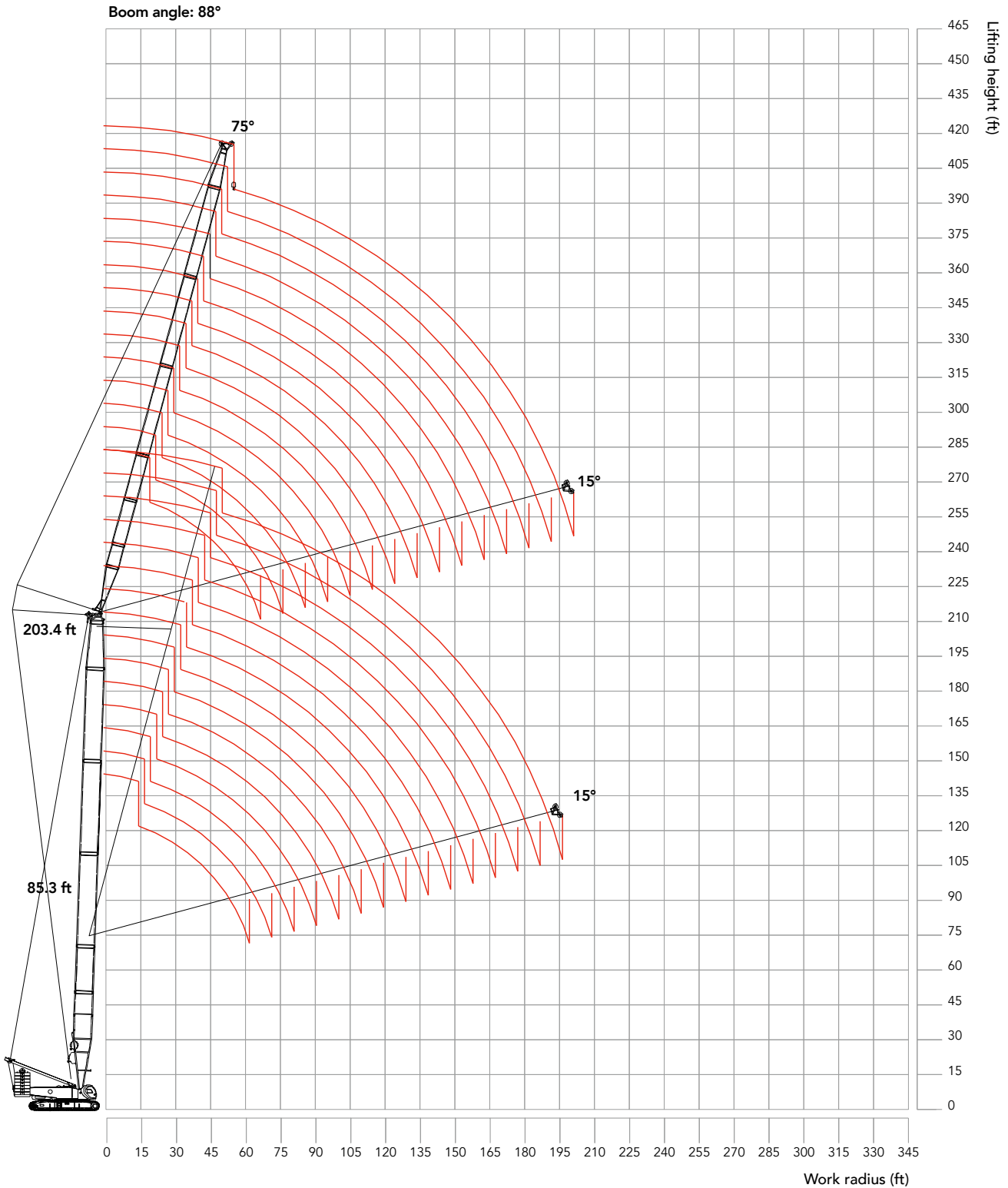
## LJ Configuration

LJ Configuration					
Jib length ft (m)	Insert			Boom Length ft (m)	Boom Angle
	9.8ft (3m)	19.7ft (6m)	39.4ft (12m)		
68.9 (21)	1	1	-	85.3ft (26m)~203.4ft (62m)	65°~88°
78.7 (24)	-	2	-	85.3ft (26m)~203.4ft (62m)	65°~88°
88.6 (27)	1	2	-	85.3ft (26m)~203.4ft (62m)	65°~88°
98.4 (30)	-	1	1	85.3ft (26m)~203.4ft (62m)	65°~88°
108.3 (33)	1	1	1	85.3ft (26m)~203.4ft (62m)	65°~88°
118.1 (36)	-	2	1	85.3ft (26m)~203.4ft (62m)	65°~88°
128 (39)	1	2	1	85.3ft (26m)~203.4ft (62m)	65°~88°
137.8 (42)	-	1	2	85.3ft (26m)~203.4ft (62m)	65°~88°
147.6 (45)	1	1	2	85.3ft (26m)~203.4ft (62m)	65°~88°
157.5 (48)	-	2	2	85.3ft (26m)~203.4ft (62m)	65°~88°
167.3 (51)	1	2	2	85.3ft (26m)~203.4ft (62m)	65°~88°
177.2 (54)	-	1	3	85.3ft (26m)~203.4ft (62m)	65°~88°
187 (57)	1	1	3	85.3ft (26m)~203.4ft (62m)	65°~88°
196.9 (60)	-	2	3	85.3ft (26m)~203.4ft (62m)	65°~88°
206.7 (63)	1	2	3	85.3ft (26m)~203.4ft (62m)	65°~88°



Luffing jib combination

### LJ Working Radius





**LJ Load Chart**

SCA2600A Luffing Jib (without boom tip sheave block)															
Boom 85.3 ft-203.4ft; Jib 68.9ft-206.6ft; Rear counterweight 220.5Klb; Carbody counterweight 88.2Klb															
Boom length (ft)		85.3												Boom length (ft)	
Jib length (ft)		68.9						78.7						Jib length (ft)	
Radius(ft)	Boom Angle(°)	88	85	80	75	70	65	88	85	80	75	70	65	Radius(ft)	Boom Angle(°)
33		198.2												33	
35		196.6						193.3						35	
40		190.9	196.9					184.8						40	
45		172.9	187.5					166.2						45	
50		156	169.5					150.2	166.8					50	
55		141.3	151.6	151.8				135.9	150.2					55	
60		127.8	136.2	138.7				123.6	136.0	136.3				60	
65		111.5	122.3	127.8				114.0	123.3	125.5				65	
70		92.6	107.1	118.2	114.4			103.5	113.5	116.6				70	
75			89.6	108.9	105.5			91.3	103.2	108.1	104.5			75	
80				100.2	97.1	94.2			91.7	100.0	96.8			80	
85				92.9	90	87.1			78.8	92.7	89.8			85	
90					83.9	81.3				86.5	83.7	80.9		90	
95						76	73.5			80.8	78.2	75.7		95	
100							69				73.2	71	68.6	100	
105							64.8				68.7	66.6	64.4	105	
110												62.8	60.8	110	
115													57.4	115	
120														120	
125														125	
130														130	
135														135	

**LJ Load Chart**

SCA2600A Luffing Jib (without boom tip sheave block)															
Boom 85.3 ft-203.4ft; Jib 68.9ft-206.6ft; Rear counterweight 220.5Klb; Carbody counterweight 88.2Klb															
Boom length (ft)		85.3												Boom length (ft)	
Jib length (ft)		88.6						98.4						Jib length (ft)	
Radius(ft)	Boom Angle(°)	88	85	80	75	70	65	88	85	80	75	70	65	Radius(ft)	Boom Angle(°)
33														33	
35														35	
40		182.7						172.9						40	
45		165.2						163.6						45	
50		149.5	164.8					148.4						50	
55		135.3	149.2					134.4	147.5					55	
60		123.0	135.4	133.8				123.0	135.0					60	
65		113.4	123.5	123.3				112.6	123.1					65	
70		104.9	113.7	114.5				104.9	113.2	111.8				70	
75		96.8	105.3	106.7				97.7	104.9	104.2				75	
80		88.2	97.9	99.4	94.9			90.9	97.8	97.4	93.3			80	
85		77.2	90.4	92.3	88.2			84.8	91.1	91.1	87.5			85	
90		65.5	78.9	86.1	82.3			74.7	85.2	85.1	81.7			90	
95			66.7	80.5	76.9	74.4		64.8	77.4	79.5	76.4			95	
100				75.4	72.0	69.7			67.8	74.5	71.6	68.7		100	
105				70.7	67.7	65.5	63.8		57.0	70.0	67.2	64.6		105	
110					63.9	61.7	60.3			66.1	63.4	60.9		110	
115						58.4	57				60.0	57.6	56.1	115	
120							53.9				56.8	54.6	53.1	120	
125												51.8	50.4	125	
130												49.2	47.9	130	
135													45.6	135	

**LJ Load Chart**

SCA2600A Luffing Jib (without boom tip sheave block)															
Boom 85.3 ft-203.4ft; Jib 68.9ft-206.6ft; Rear counterweight 220.5Klb; Carbody counterweight 88.2Klb															
Boom length (ft)		85.3												Boom length (ft)	
Jib length (ft)		108.3						118.1						Jib length (ft)	
Radius(ft)	Boom Angle(°)	88	85	80	75	70	65	88	85	80	75	70	65	Radius(ft)	Boom Angle(°)
50		147.2						144.8						50	
55		133.1	145.0					132.7						55	
60		121.2	132.8					121.1	130.6					60	
65		112.0	122.5					111.3	120.5					65	
70		103.9	112.8					103.4	112.0					70	
75		96.7	104.1	103.3				96.3	103.8	100.7				75	
80		90.5	96.6	96.7				89.8	96.1	94.2				80	
85		84.9	90.5	90.8				84.0	89.8	88.4				85	
90		76.6	85.0	85.1	79.5			79.3	84.5	83.4				90	
95		68.2	78.2	79.8	74.5			72.9	79.4	78.4	73.9			95	
100		60.0	70.4	74.8	69.9	67.4		65.7	74.2	73.6	69.5			100	
105		52.1	62.3	70.3	65.7	63.3		59.0	68.1	69.2	65.3	62.9		105	
110		44.0	53.8	66.4	61.9	59.6		51.4	60.8	65.3	61.6	59.2		110	
115				61.1	58.5	56.4		44.6	53.2	61.7	58.2	56.0		115	
120				54.0	55.4	53.5	52.5		45.9	58.4	55.1	53.1		120	
125					52.6	50.7	50.0			55.4	52.2	50.3	48.3	125	
130					49.9	48.2	47.5			52.6	49.6	47.8	46.0	130	
135						45.9	45.1				47.3	45.5	43.7	135	
140							42.9					43.4	41.6	140	
145												41.5	39.7	145	
150												39.5	38.0	150	
155													36.3	155	
160														160	
165														165	
170														170	
175														175	

**LJ Load Chart**

SCA2600A Luffing Jib (without boom tip sheave block)															
Boom 85.3 ft-203.4ft; Jib 68.9ft-206.6ft; Rear counterweight 220.5Klb; Carbody counterweight 88.2Klb															
Boom length (ft)		85.3												Boom length (ft)	
Jib length (ft)		128						137.8						Jib length (ft)	
Radius(ft)	Boom Angle(°)	88	85	80	75	70	65	88	85	80	75	70	65	Radius(ft)	Boom Angle(°)
50		137.1													50
55		131.1						118.7							55
60		120.2	128.4					116.3							60
65		110.1	118.6					107.6							65
70		101.9	110.3					99.8	108.7						70
75		94.7	102.9					92.7	101.4						75
80		88.4	96.2	92.6				86.5	94.7	89.3					80
85		83.0	90.0	86.9				80.9	88.8	83.8					85
90		78.4	84.3	82.0				76.6	83.5	79.2					90
95		73.9	79.0	77.5	72.8			72.3	78.6	74.8					95
100		69.0	74.5	73.2	68.7			68.2	74.3	70.8	67.4				100
105		63.3	70.6	68.8	64.7			64.5	70.6	67.1	63.8				105
110		57.0	65.4	64.9	61.0			59.9	66.7	63.1	60.2				110
115		51.4	59.5	61.3	57.7	55.4		54.6	62.6	59.6	56.8				115
120		45.4	52.8	58.0	54.7	52.5		49.4	57.8	56.4	53.6	51.6			120
125		38.2	45.6	55.0	51.8	49.7	47.7	44.4	52.2	53.6	50.9	49.0			125
130		32.6	39.6	52.2	49.2	47.2	45.4	37.5	47.4	50.9	48.5	46.5			130
135				49.8	46.9	45.0	43.2	32.5	40.8	48.5	46.1	44.2	42.4		135
140				47.5	44.7	42.9	41.2		34.5	44.8	43.9	42.1	40.4		140
145					42.7	40.9	39.3			39.2	42.0	40.2	38.5		145
150					40.7	39.0	37.4			33.7	40.0	38.4	36.8		150
155						37.3	35.7				38.3	36.7	35.1		155
160							34.2					35.1	33.6		160
165													32.1		165
170													30.8		170
175													29.5		175

**LJ Load Chart**

SCA2600A Luffing Jib (without boom tip sheave block)															
Boom 85.3 ft-203.4ft; Jib 68.9ft-206.6ft; Rear counterweight 220.5Klb; Carbody counterweight 88.2Klb															
Boom length (ft)		85.3												Boom length (ft)	
Jib length (ft)		147.6						157.5						Jib length (ft)	
Radius(ft)	Boom Angle(°)	88	85	80	75	70	65	88	85	80	75	70	65	Radius(ft)	Boom Angle(°)
55		105.9													55
60		105.0						94.0							60
65		103.9						93.0							65
70		98.7	101.8					92.1	91.5						70
75		92.6	97.6					89.6	90.6						75
80		86.5	91.4					85.5	88.8						80
85		81.1	85.8					79.9	84.4						85
90		76.0	81.0	77.8				75.5	79.8						90
95		71.6	76.5	73.4				71.3	75.4	72.3					95
100		67.8	72.4	69.5				67.3	71.4	68.5					100
105		64.1	68.7	66.1	63.3			63.5	67.7	64.9					105
110		60.9	64.9	62.6	60.1			60.6	64.3	61.8					110
115		57.0	61.4	59.2	56.9			57.7	61.1	58.7	56.2				115
120		52.7	58.2	56.0	53.9			54.7	57.9	55.6	53.4				120
125		48.1	55.1	53.2	51.0	50.5		51.3	54.8	52.8	50.6	48.5			125
130		43.9	49.9	50.5	48.4	48.0		46.5	52.1	50.1	48.0	46.0			130
135		37.9	45.5	48.0	46.1	45.7		42.8	48.4	47.6	45.7	43.7			135
140		32.4	40.2	45.7	43.9	43.5	40.3	39.3	44.5	45.3	43.5	41.6			140
145		28.1	33.4	43.3	41.9	41.4	38.5	35.3	40.3	43.3	41.5	39.7	37.9		145
150		23.6	29.0	39.1	40.0	39.5	36.6	28.3	33.5	41.4	39.6	37.8	36.2		150
155				34.1	38.2	37.8	35.1	23.9	29.0	39.6	37.9	36.1	34.5		155
160					36.5	36.1	33.5		24.8	37.9	36.3	34.5	33.0		160
165					35.0	34.6	32.0			36.2	34.6	33.0	31.6		165
170					33.5	33.2	30.8			34.7	33.3	31.7	30.4		170
175						31.8	29.5				31.9	30.5	29.1		175
180							28.3					29.3	27.9		180
185													26.7		185
190													25.7		190
195															195
200															200
205															205
210															210

**LJ Load Chart**

SCA2600A Luffing jib (without boom tip sheave block) (3-2/20)															
Boom 85.3 ft-203.4ft; jib 68.9ft-206.6ft; Rear counterweight 220.5Klb; Carbody counterweight 88.2Klb															
Boom length (ft)		85.3												Boom length (ft)	
jib length (ft)		167.3						177.2						jib length (ft)	
Radius(ft)	Boom Angle(°)	88	85	80	75	70	65	88	85	80	75	70	65	Radius(ft)	Boom Angle(°)
55														55	
60		84.5						70.1						60	
65		83.6						69.5						65	
70		82.7						68.8						70	
75		81.8	81.4					68.1	67.7					75	
80		80.8	80.6					67.3	66.9					80	
85		79.5	79.7					66.5	66.3					85	
90		75.0	77.6					65.9	65.6					90	
95		70.8	74.2	71.2				65.2	64.9					95	
100		66.9	70.3	67.4				64.2	64.4	62.7				100	
105		63.3	66.7	63.9				62.5	63.9	62.1				105	
110		60.2	63.3	60.7				59.1	62.1	59.6				110	
115		57.3	60.3	57.8	55.4			55.0	59.5	57.0				115	
120		54.6	57.4	55.1	52.8			50.8	56.5	54.4	52.1			120	
125		52.0	54.4	52.2	50.0			47.0	53.3	51.8	49.7			125	
130		48.9	51.7	49.6	47.4			43.4	49.0	49.2	47.2			130	
135		45.1	49.2	47.2	45.1	43.2		40.1	45.3	46.9	44.9			135	
140		41.4	46.5	44.9	43.0	41.2		37.0	41.8	44.7	42.8	40.8		140	
145		38.1	43.4	42.9	41.1	39.1		34.2	38.5	42.7	40.7	38.9		145	
150		34.9	39.8	40.9	39.1	37.4		31.7	35.6	40.7	38.8	37.0		150	
155		28.8	36.2	39.1	37.3	35.7	34.1	29.1	32.9	38.8	37.1	35.3		155	
160		23.7	31.0	37.5	35.7	34.1	32.5	26.7	30.4	36.7	35.5	33.7	32.2	160	
165			24.7	35.0	34.2	32.6	31.0	23.7	28.1	34.4	33.8	32.2	30.8	165	
170			21.2	29.5	32.7	31.4	29.8	16.9	25.7	31.6	32.5	31.0	29.5	170	
175				25.3	31.4	30.0	28.5	13.2	19.3	29.2	31.2	29.7	28.2	175	
180					30.1	28.7	27.3		14.5	24.1	29.9	28.5	27.0	180	
185					28.9	27.5	26.1			18.0	27.5	27.3	25.9	185	
190					27.7	26.5	25.1			15.3	21.6	26.3	24.9	190	
195						25.4	24.1				18.5	25.2	23.8	195	
200							23.2						24.1	22.8	200
205														21.9	205
210														21.0	210

**LJ Load Chart**

SCA2600A Luffing Jib (without boom tip sheave block)																					
Boom 85.3 ft-203.4ft; Jib 68.9ft-206.6ft; Rear counterweight 220.5Klb; Carbody counterweight 88.2Klb																					
Boom length (ft)		85.3																		Boom length (ft)	
Jib length (ft)		187						196.9						206.7						Jib length (ft)	
Radius(ft)	Boom Angle(°)	88	85	80	75	70	65	88	85	80	75	70	65	88	85	80	75	70	65	Radius(ft)	Boom Angle(°)
70		67.6						61.4													70
75		66.9						60.7						55.5							75
80		66.1	65.7					59.9	59.7					54.8							80
85		65.2	64.9					59.3	58.9					54.2							85
90		64.4	64.2					58.7	58.5					53.5	53.3						90
95		63.8	63.4					58.0	57.8					52.8	52.6						95
100		63.2	62.8	61.6				57.3	57.1					52.2	52.0						100
105		62.3	62.3	61.1				56.5	56.5	55.6				51.4	51.4						105
110		59.4	60.9	58.6				56.0	55.8	54.8				50.8	50.8						110
115		56.6	58.5	56.0				55.0	55.2	54.0				50.2	50.2	49.4					115
120		54.0	55.8	53.4				53.2	54.2	52.5				49.6	49.6	48.8					120
125		51.3	53.3	50.9	48.7			50.7	52.5	50.1	47.7			48.9	49.0	48.1					125
130		48.8	51.0	48.7	46.4			48.5	50.2	47.8	45.5			47.9	48.3	46.6					130
135		46.5	48.6	46.4	44.2			46.4	48.0	45.7	43.6			46.0	46.8	44.8	42.7				135
140		44.4	46.2	44.1	42.2			44.4	45.8	43.7	41.6			44.0	45.0	42.9	40.9				140
145		42.3	44.0	42.1	40.3	38.3		42.5	43.6	41.7	39.7			42.3	43.3	41.1	39.1				145
150		39.1	42.0	40.2	38.3	36.4		40.6	41.6	39.7	37.8			40.3	41.3	39.2	37.4				150
155		36.1	40.2	38.4	36.5	34.7		37.9	39.8	37.9	36.1	34.3		38.8	39.4	37.4	35.6				155
160		33.4	37.8	36.7	34.9	33.2		35.0	38.1	36.3	34.5	32.7		36.6	37.7	35.7	33.9	32.2			160
165		30.0	34.8	35.0	33.4	31.8	30.3	32.2	36.2	34.6	33.0	31.2		33.8	36.0	34.2	32.4	30.9			165
170		23.2	32.2	33.5	31.9	30.6	29.0	29.9	33.8	33.1	31.5	30.0		31.5	34.3	32.7	31.2	29.6			170
175		19.9	25.6	32.1	30.7	29.2	27.7	27.6	31.4	31.8	30.3	28.7	27.1	29.3	32.6	31.4	29.8	28.2			175
180		17.1	20.8	30.9	29.5	27.9	26.5	22.5	26.2	30.5	29.1	27.5	26.0	27.1	30.6	30.1	28.5	27.0	25.5		180
185			18.0	29.7	28.3	26.7	25.3	16.5	20.0	29.3	27.9	26.3	24.9	23.5	28.2	28.9	27.3	25.9	24.3		185
190			15.1	28.5	27.1	25.7	24.3	14.0	17.6	28.1	26.7	25.3	23.9	16.3	26.1	27.7	26.3	24.7	23.3		190
195				27.4	26.0	24.6	23.3	11.6	15.0	21.8	25.6	24.2	22.9	13.7	18.8	26.6	25.2	23.7	22.3		195
200				26.3	24.9	23.6	22.4			18.0	24.6	23.2	22.0	11.4	14.6	21.7	24.1	22.7	21.4		200
205					23.9	22.7	21.5			15.6	23.7	22.3	21.1		12.3	16.5	23.1	21.8	20.5		205
210					23.0	21.8	20.6			12.7	22.6	21.4	20.2		9.9	15.3	22.2	21.0	19.6		210
215						20.9	19.8				21.7	20.5	19.4			12.7	21.3	20.1	18.9		215
220							19.0					19.7	18.7				20.5	19.3	18.2		220
225													18.0				19.7	18.5	17.4		225
230																		17.9	16.7		230
235																			17.1	16.0	235
240																				15.3	240

**LJ Load Chart**

SCA2600A Luffing Jib (without boom tip sheave block)															
Boom 85.3 ft-203.4ft; Jib 68.9ft-206.6ft; Rear counterweight 220.5Klb; Carbody counterweight 88.2Klb															
Boom length (ft)		114.8												Boom length (ft)	
Jib length (ft)		68.9						78.7						Jib length (ft)	
Radius(ft)	Boom Angle(°)	88	85	80	75	70	65	88	85	80	75	70	65	Radius(ft)	Boom Angle(°)
33		198.1													33
35		196.6													35
40		191.7						181.9							40
45		178.1						173.9							45
50		162.4	157.6					159.5	154.9						50
55		148.1	143.6					145.4	141.2						55
60		135.4	131.7	125.4				133.5	129.6						60
65		122.9	121.6	115.7				123.4	119.7						65
70		97.6	113.3	107.6				114.9	111.4	105.8					70
75			105.9	100.4	95.4			102.5	104.1	98.7					75
80				93.9	89.3			86.8	97.5	92.5	87.9				80
85				88.2	83.8			71	91.8	87	82.4				85
90				82.3	78.4				85.7	81.8	77.9				90
95					73.3	70				76.7	73.1	69.6			95
100						65.6					68.5	65.2			100
105						61.7	58.7				64.5	61.3			105
110						58	55.4				60.7	57.8			110
115							52.4					54.6	52		115
120													49.2		120
125													46.7		125
130													44.3		130
135															135
140															140
145															145
150															150



**LJ Load Chart**

SCA2600A Luffing Jib (without boom tip sheave block)															
Boom 85.3 ft-203.4ft; Jib 68.9ft-206.6ft; Rear counterweight 220.5Klb; Carbody counterweight 88.2Klb															
Boom length (ft)		114.8												Boom length (ft)	
Jib length (ft)		88.6						98.4						Jib length (ft)	
Radius(ft)	Boom Angle(°)	88	85	80	75	70	65	88	85	80	75	70	65	Radius(ft)	Boom Angle(°)
33														33	
35														35	
40		180.9						170.2						40	
45		170.9						164.9						45	
50		156.5						153.2						50	
55		142.8	138.6					140.7	136.5					55	
60		131.1	127.2					129.2	125.3					60	
65		121.2	117.5					119.5	115.8					65	
70		112.9	109.4	103.9				111.2	107.8					70	
75		105.5	102.2	97				104	100.7	95.6				75	
80		98.1	95.7	90.9				97.5	94.4	89.5				80	
85		89.4	90	85.4				91.8	88.8	84.2				85	
90		75	85	80.8	76.5			86.8	83.9	79.6				90	
95			79.9	76	72.2			76.2	79.3	75.2	71.4			95	
100				71.5	68.1	64.6			74.8	71.1	67.5			100	
105				67.3	63.9	60.7			70.4	67.1	63.7	60.5		105	
110				63.3	60.4	57.4			66.3	63.3	60.2	57		110	
115					57	54.3				59.8	56.9	54		115	
120						51.4	48.6				53.9	51.2		120	
125						48.7	46.1				51	48.5	45.9	125	
130						46.2	43.8				48.4	46	43.6	130	
135							41.7					43.8	41.5	135	
140													39.5	140	
145													37.7	145	
150													36	150	

**LJ Load Chart**

SCA2600A Luffing Jib (without boom tip sheave block)															
Boom 85.3 ft-203.4ft; Jib 68.9ft-206.6ft; Rear counterweight 220.5Klb; Carbody counterweight 88.2Klb															
Boom length (ft)		114.8												Boom length (ft)	
Jib length (ft)		108.3						118.1						Jib length (ft)	
Radius(ft)	Boom Angle(°)	88	85	80	75	70	65	88	85	80	75	70	65	Radius(ft)	Boom Angle(°)
50		148.2						137						50	
55		138.3						132.8						55	
60		127.1	123.1					124.9	121.2					60	
65		117.5	113.8					115.6	112					65	
70		109.4	106					107.8	104.3					70	
75		102.2	98.9	93.9				100.6	97.4					75	
80		95.7	92.6	87.9				94.2	91.3	86.5				80	
85		90	87.2	82.6				88.6	85.8	81.3				85	
90		85.1	82.4	78.1				83.7	81.2	76.9				90	
95		79	78	73.8	69.9			79.4	76.8	72.6				95	
100		70.6	73.9	69.9	66.2			75	72.8	68.8	65			100	
105		59.5	70	66.5	62.9			70.2	69.2	65.5	61.7			105	
110		50.5	66.1	62.8	59.5			59.6	65.6	62.3	58.8			110	
115			62.5	59.4	56.3	53.4		51.2	62.1	59	55.8			115	
120				56.2	53.4	50.6			58.8	55.8	53	50		120	
125				53.4	50.6	47.9	45.3		55.8	53	50.2	47.5		125	
130				50.7	48	45.4	43		53.1	50.4	47.6	45		130	
135					45.7	43.2	40.9			48	45.4	42.8	40.4	135	
140						41.2	38.9				43.3	40.9	38.5	140	
145						39.3	37.1				41.3	39.1	36.7	145	
150						37.6	35.4				39.4	37.2	35	150	
155							33.9					35.5	33.5	155	
160													32	160	
165													30.7	165	
170													29.4	170	
175														175	
180														180	

**LJ Load Chart**

SCA2600A Luffing Jib (without boom tip sheave block)															
Boom 85.3 ft-203.4ft; Jib 68.9ft-206.6ft; Rear counterweight 220.5Klb; Carbody counterweight 88.2Klb															
Boom length (ft)		114.8												Boom length (ft)	
Jib length (ft)		128						137.8						Jib length (ft)	
Radius(ft)	Boom Angle(°)	88	85	80	75	70	65	88	85	80	75	70	65	Radius(ft)	Boom Angle(°)
50														50	
55		121.2						108.5						55	
60		119.5	118.5					107.8						60	
65		113.2	110.1					107						65	
70		105.9	102.6					103.1	100.8					70	
75		99	95.8					97.6	94.5					75	
80		92.8	89.7					91.5	88.5					80	
85		87.2	84.4					86	83.2					85	
90		82.6	79.8	75.5				81.4	78.7	74.5				90	
95		78.1	75.4	71.4				77	74.4	70.4				95	
100		74	71.5	67.6				73	70.5	66.6				100	
105		70.4	68.1	64.1	60.5			69.4	67.1	63.3	59.7			105	
110		66.9	64.9	61	57.6			66.1	63.9	60.2	56.9			110	
115		61.3	61.6	58.2	55			63	60.9	57.4	54.2			115	
120		53.6	58.4	55.4	52.4			59.3	58	54.8	51.7			120	
125		44.2	55.2	52.6	49.7	46.9		54.2	55.2	52.2	49.3	46.3		125	
130		37.5	47.8	50	47.2	44.4		44.9	52.5	49.6	46.8	44.2		130	
135			41	47.6	44.9	42.2		38.3	50	47.3	44.6	42.1		135	
140				45.3	42.8	40.3	37.9		47.6	45.1	42.6	40		140	
145				43.3	40.9	38.5	36.1		45.3	43.1	40.7	38.1	35.7	145	
150				41.3	39	36.6	34.4		43.1	41.1	38.8	36.4	34.2	150	
155					37.3	35.1	32.9			39.3	37.1	34.9	32.7	155	
160						33.5	31.4				35.5	33.3	31.2	160	
165						32	30.2				33.8	31.8	29.9	165	
170						30.8	28.9				32.5	30.6	28.6	170	
175							27.7					29.3	27.5	175	
180													26.3	180	

**LJ Load Chart**

SCA2600A Luffing Jib (without boom tip sheave block)															
Boom 85.3 ft-203.4ft; Jib 68.9ft-206.6ft; Rear counterweight 220.5Klb; Carbody counterweight 88.2Klb															
Boom length (ft)		114.8												Boom length (ft)	
Jib length (ft)		147.6						157.5						Jib length (ft)	
Radius(ft)	Boom Angle(°)	88	85	80	75	70	65	88	85	80	75	70	65	Radius(ft)	Boom Angle(°)
55		97.6													55
60		96.8						87.2							60
65		95.9						86.4							65
70		95.1	94.7					85.6							70
75		93.4	91.9					84.9	84.5						75
80		90.1	87.1					84.1	83.2						80
85		84.6	81.8					83.2	80.6						85
90		80.1	77.3					78.9	76.3						90
95		75.8	73.1	69.1				74.6	72.1	68					95
100		71.9	69.3	65.4				70.7	68.3	64.4					100
105		68.3	65.9	62.1				67.3	64.9	61.1					105
110		65.1	62.7	59				64.1	61.7	58					110
115		62.1	59.8	56.4	53			61.1	58.8	55.4					115
120		59.3	57.2	53.9	50.5			58.4	56.2	52.9	49.5				120
125		56.5	54.6	51.5	48.3			55.8	53.9	50.5	47.3				125
130		52.9	52	49.2	46.1			53.2	51.6	48.3	45.3				130
135		45.4	49.6	46.9	44	41.4		50.8	49.2	46.3	43.5				135
140		38.4	47.2	44.7	42	39.4		47.5	46.9	44.3	41.6	38.9			140
145		33.5	45	42.7	40.1	37.5		42.8	44.8	42.3	39.7	37.1			145
150		28.5	43	40.7	38.2	35.8		34.1	42.8	40.3	37.8	35.4			150
155			41.2	38.9	36.5	34.3	32	29	36.8	38.5	36.1	33.9			155
160				37.3	34.9	32.7	30.6		31.2	36.9	34.5	32.4	30.1		160
165					33.4	31.3	29.3			35.2	33	30.9	28.8		165
170					32.1	30.1	28			33.7	31.7	29.6	27.5		170
175					30.8	28.8	26.9			32.3	30.4	28.3	26.3		175
180						27.6	25.8				29.1	27.2	25.2		180
185							24.7					26.1	24.2		185
190							23.7					25.1	23.3		190
195							22.7					24	22.3		195
200													21.4		200
205															205
210															210
215															215
220															220

**LJ Load Chart**

SCA2600A Luffing Jib (without boom tip sheave block)															
Boom 85.3 ft-203.4ft; Jib 68.9ft-206.6ft; Rear counterweight 220.5Klb; Carbody counterweight 88.2Klb															
Boom length (ft)		114.8												Boom length (ft)	
Jib length (ft)		167.3						177.2						Jib length (ft)	
Radius(ft)	Boom Angle(°)	88	85	80	75	70	65	88	85	80	75	70	65	Radius(ft)	Boom Angle(°)
55														55	
60		78.9												60	
65		78.3												65	
70		77.5						64.6						70	
75		76.8	76.4					64						75	
80		76	75.6					63.3	63.1					80	
85		75.2	74.8					62.7	62.5					85	
90		74.5	73.7					62.1	61.9					90	
95		72.5	70.9					61.7	61.5					95	
100		69.5	67.2	63.2				61.4	61.1					100	
105		66.1	63.7	59.9				60.9	60.5	58.3				105	
110		62.9	60.6	57.1				60.3	59.3	56.1				110	
115		60	57.8	54.4				58.6	57	53.6				115	
120		57.4	55.3	51.9	48.5			56.4	54.5	51.1				120	
125		54.9	52.9	49.5	46.3			54.1	52.1	48.7	45.5			125	
130		52.6	50.6	47.3	44.3			51.8	49.8	46.5	43.6			130	
135		50.3	48.4	45.3	42.5			48.7	47.7	44.7	41.7			135	
140		48	46.3	43.4	40.7			45.2	45.8	42.9	40			140	
145		45.6	44.4	41.7	38.9	36.3		41.5	44	41.1	38.3			145	
150		42.5	42.3	39.8	37.2	34.8		38.1	42	39.4	36.8			150	
155		34.3	40.4	38	35.5	33.3		35.1	40.2	37.7	35.3	32.8		155	
160		28.1	38.7	36.3	33.9	31.8		32.4	37.8	36.1	33.7	31.4		160	
165		25	37	34.8	32.4	30.4	28.2	29.7	34.8	34.4	32.2	30.1		165	
170		20.9	35.5	33.3	31.2	29.1	26.9	27.3	32	33.1	31	28.8		170	
175			34.1	31.9	29.9	27.9	25.9	22.3	29.4	31.8	29.6	27.5	25.5	175	
180				30.7	28.7	26.7	24.8		25.1	30.5	28.4	26.4	24.4	180	
185					27.5	25.5	23.7			29.3	27.3	25.3	23.3	185	
190					26.5	24.5	22.7			28.1	26.1	24.3	22.3	190	
195					25.4	23.5	21.7			27	25.1	23.2	21.3	195	
200						22.6	20.8				24.1	22.2	20.5	200	
205							20					21.4	19.7	205	
210							19.2					20.6	18.8	210	
215							18.5					19.7	18.1	215	
220													17.5	220	

**LJ Load Chart**

SCA2600A Luffing Jib (without boom tip sheave block)																												
Boom 85.3 ft-203.4ft; Jib 68.9ft-206.6ft; Rear counterweight 220.5Klb; Carbody counterweight 88.2Klb																												
Boom length (ft)		114.8																		Boom length (ft)								
Jib length (ft)		187						196.9						206.7						Jib length (ft)								
Radius(ft)	Boom Angle(°)	88	85	80	75	70	65	88	85	80	75	70	65	88	85	80	75	70	65	Radius(ft)	Boom Angle(°)							
70		63.8						58.2													70							
75		63.2						57.5						52.9							75							
80		62.5	62.1					56.8						52.2							80							
85		61.7	61.5					56.5						51.6							85							
90		61.3	60.8					56	55.8					51	50.8						90							
95		60.7	60.3					55.4	55.2					50.4	50.2						95							
100		60.1	59.9					54.8	54.6					49.8	49.7						100							
105		59.5	59.3	57.7				54.2	54					49.2	49.2						105							
110		58.9	58.2	55				53.6	53.4					48.7	48.6						110							
115		57.5	56	52.5				53	52.8	50.8				48.2	48	46.9					115							
120		55.5	53.5	50.1				52.4	51.8	49.1				47.6	47.4	46.4					120							
125		53.1	51.1	47.7				51.9	50.1	46.9				47.2	47	45.9					125							
130		50.8	48.8	45.7				49.9	47.9	44.7				46.7	46.5	43.8					130							
135		48.6	46.7	43.8	40.7			47.8	45.9	42.9				46.1	44.9	41.9					135							
140		46.6	44.8	41.9	39			45.8	44	41.1	38.2			45	43	40.2	37.2				140							
145		44.8	43.1	40.1	37.3			44	42.3	39.3	36.5			43.3	41.3	38.5	35.7				145							
150		43	41.4	38.6	35.8			42.4	40.6	37.8	35			41.4	39.8	36.8	34.2				150							
155		41.2	39.7	37.1	34.4	31.9		40.7	39.1	36.3	33.6			39.9	38.3	35.4	32.8				155							
160		39.5	38.1	35.5	33	30.6		39.1	37.5	34.8	32.3	30		38.3	36.7	34	31.4				160							
165		37.5	36.4	34	31.6	29.4		37.4	36	33.4	31.1	28.8		36.8	35.3	32.7	30.2	27.8			165							
170		34.5	34.9	32.5	30.4	28.1		35.7	34.5	32.1	29.9	27.5		35.3	34	31.4	28.9	26.7			170							
175		25.4	33.4	31.3	29.1	26.9		33.9	33.1	30.9	28.7	26.5		33.9	32.6	30.3	27.9	25.7			175							
180		20.1	27.7	30	27.9	25.8	23.8	26.7	31.8	29.6	27.5	25.4		32.5	31.3	29.1	26.8	24.6			180							
185		18.2	20.9	28.7	26.7	24.7	22.7	18	30.5	28.3	26.3	24.3	22.2	28.4	30.1	27.9	25.7	23.6			185							
190		15.1	19.7	27.7	25.7	23.7	21.7	17	29.3	27.3	25.3	23.3	21.3	16.6	28.9	26.7	24.7	22.7			190							
195				26.6	24.6	22.7	20.9	15	28	26.2	24.2	22.2	20.3	14.9	27.6	25.6	23.6	21.7	19.7		195							
200				25.5	23.6	21.8	20		26.9	25.1	23.2	21.3	19.5	13.8	26.5	24.6	22.6	20.8	19		200							
205					22.7	20.9	19.2			24.1	22.3	20.5	18.7		25.5	23.7	21.7	19.9	18.2		205							
210					21.8	20	18.5			23.2	21.4	19.6	17.9		24.6	22.8	20.8	19	17.3		210							
215					20.9	19.2	17.7			22.3	20.5	18.9	17.1		23.1	21.9	20	18.3	16.7		215							
220						18.5	17				19.7	18.2	16.5			21	19.3	17.6	16		220							
225							16.3						17.4	15.8				18.5	16.9	15.3		225						
230														16.7	15.1				17.9	16.3	14.7		230					
235														16	14.4					17.1	15.5	13.9		235				
240															13.8							14.8	13.4		240			
245																								12.8		245		
250																									12.2		250	
255																										11.6		255

**LJ Load Chart**

SCA2600A Luffing Jib (without boom tip sheave block)															
Boom 85.3 ft-203.4ft; Jib 68.9ft-206.6ft; Rear counterweight 220.5Klb; Carbody counterweight 88.2Klb															
Boom length (ft)		144.4												Boom length (ft)	
Jib length (ft)		68.9						78.7						Jib length (ft)	
Radius(ft)	Boom Angle(°)	88	85	80	75	70	65	88	85	80	75	70	65	Radius(ft)	Boom Angle(°)
33		188.5													33
35		188.5													35
40		186.5						180.4							40
45		169.4						165.9							45
50		154.2	148.1					151.4							50
55		141	135.5					138.5	133						55
60		129.8	124.5					127.5	122.4						60
65		120.2	115.2					118.2	113.2						65
70		96.7	107.5	100.2				110.3	105.6	98.5					70
75			100.6	93.6				103.2	98.8	92					75
80			94.4	87.8				96.9	92.6	86.2					80
85			89.2	82.6				91.2	87.4	81.3					85
90				78.2	72.6				82.9	76.9	71.4				90
95				74.2	68.8					72.8	67.6				95
100					65.2	60.5				69.2	64.1				100
105					61.9	57.5				65.9	60.9	56.4			105
110					58.2	54.5					58	53.6			110
115						51.6					54.9	51			115
120							50.4					48.4			120
125								47.7				45.9	47.3		125
130								45.4				43.6	44.9		130
135													42.6		135
140													40.6		140
145															145
150															150
155															155
160															160

**LJ Load Chart**

SCA2600A Luffing Jib (without boom tip sheave block)															
Boom 85.3 ft-203.4ft; Jib 68.9ft-206.6ft; Rear counterweight 220.5Klb; Carbody counterweight 88.2Klb															
Boom length (ft)		144.4												Boom length (ft)	
Jib length (ft)		88.6						98.4						Jib length (ft)	
Radius(ft)	Boom Angle(°)	88	85	80	75	70	65	88	85	80	75	70	65	Radius(ft)	Boom Angle(°)
33														33	
35														35	
40	158.7													40	
45	158.7													45	
50	148.1							142.1						50	
55	136.1	133.6						134	128.6					55	
60	125.3	122.9						123.4	118.4					60	
65	116	113.7						114.4	109.7					65	
70	108.3	106.1						106.7	102.4					70	
75	101.3	99.2	92.3					99.8	95.7					75	
80	95	93.1	86.5					93.6	89.8	83.5				80	
85	89.6	87.7	81.4					88.4	84.6	78.7				85	
90	84.9	82.9	76.9					83.7	80.1	74.3				90	
95	77.4	78.6	72.8	67.7				79.4	75.9	70.4				95	
100		74.8	69.1	64.1				74.8	72.1	66.8	61.7			100	
105		71.4	65.7	60.8				69	68.7	63.5	58.7			105	
110			62.8	58					65.6	60.6	56			110	
115			59.6	55.3	51.1					57.8	53.4			115	
120				52.7	48.8					55.1	50.9	48.6		120	
125					46.3						48.7	46.4		125	
130					44						46.2	44.2		130	
135					41.9	42					44	42.1	41.7	135	
140						40						40.2	39.8	140	
145						38.2						38.3	37.9	145	
150						36.5						36.6	36.2	150	
155													34.5	155	
160													32.9	160	



**LJ Load Chart**

SCA2600A Luffing Jib (without boom tip sheave block)															
Boom 85.3 ft-203.4ft; Jib 68.9ft-206.6ft; Rear counterweight 220.5Klb; Carbody counterweight 88.2Klb															
Boom length (ft)		144.4												Boom length (ft)	
Jib length (ft)		108.3						118.1						Jib length (ft)	
Radius(ft)	Boom Angle(°)	88	85	80	75	70	65	88	85	80	75	70	65	Radius(ft)	Boom Angle(°)
50		131.2						118.7						50	
55		127.6						117.8						55	
60		121.2	116.3					115.9	114.6					60	
65		112.4	107.7					110.2	106					65	
70		104.8	100.5					103.2	98.9					70	
75		98.1	94					96.6	92.5					75	
80		92.1	88.2	81.9				90.7	86.8					80	
85		86.8	83	77.1				85.4	81.7					85	
90		82.2	78.5	72.8				80.9	77.3	71.6				90	
95		77.8	74.3	69				76.6	73.2	67.8				95	
100		73.9	70.6	65.4	60.5			72.7	69.5	64.3				100	
105		70.4	67.3	62.1	57.3			69.2	66.1	61.1	56.4			105	
110		64.9	64.2	59.2	54.6			66	63	58.2	53.6			110	
115			61.4	56.6	52.1			62.3	60.2	55.6	51.2			115	
120			58.6	54.1	49.8	45.8		57.7	57.6	53.1	48.9			120	
125				51.8	47.7	43.7			55.2	50.9	46.7	43.9		125	
130				49.2	45.7	41.9			52.6	48.7	44.7	42		130	
135					43.5	40.1				46.6	42.9	40.2		135	
140					41.5	38.3	39.1			44.5	41.1	38.4		140	
145						36.5	37.3				39.3	36.9	36.6	145	
150						34.8	35.6				37.4	35.2	34.9	150	
155						33.3	33.9				35.7	33.7	33.4	155	
160							32.4					32.2	31.9	160	
165							31					30.7	30.6	165	
170							29.7					29.4	29.3	170	
175													28.1	175	
180														180	
185														185	
190														190	
195														195	

**LJ Load Chart**

SCA2600A Luffing Jib (without boom tip sheave block)															
Boom 85.3 ft-203.4ft; Jib 68.9ft-206.6ft; Rear counterweight 220.5Klb; Carbody counterweight 88.2Klb															
Boom length (ft)		144.4												Boom length (ft)	
Jib length (ft)		128						137.8						Jib length (ft)	
Radius(ft)	Boom Angle(°)	88	85	80	75	70	65	88	85	80	75	70	65	Radius(ft)	Boom Angle(°)
50														50	
55	106.5							96.5						55	
60	105.7							95.9						60	
65	104.9							95.1						65	
70	100.5	97.2						94.3	93.6					70	
75	95	90.9						92	89.7					75	
80	89.2	85.2						88	84.2					80	
85	84	80.3						82.8	79.3					85	
90	79.5	75.9	70.4					78.4	74.9					90	
95	75.3	71.8	66.6					74.3	70.9	65.6				95	
100	71.5	68.2	63.1					70.5	67.2	62.1				100	
105	68.1	64.9	59.9					67.1	63.9	59.1				105	
110	64.9	61.8	57.1					63.9	61	56.3				110	
115	62	59	54.4	51.2				61	58.2	53.6	49.3			115	
120	59.2	56.4	51.9	48.9				58.4	55.6	51.2	47			120	
125	56.2	54.1	49.7	46.8				56.1	53.3	49.1	44.9			125	
130	51.4	51.9	47.7	44.7				53.8	51.1	46.9	43			130	
135		49.7	45.7	42.8	38.2			50.1	49.1	45	41.2			135	
140			43.8	41.1	36.6			45.9	47.1	43.3	39.6	36.8		140	
145			42.1	39.6	35.1				45	41.7	37.9	35.3		145	
150			40.1	37.8	33.7				43	39.8	36.5	33.9		150	
155				36.1	32.3	32.6				38.1	35.1	32.6		155	
160				34.5	30.8	31.2				36.5	33.5	31.3	30.7	160	
165					29.6	29.8					32	30	29.5	165	
170					28.3	28.5					30.8	28.7	28.2	170	
175					27.1	27.4					29.5	27.5	27	175	
180						26.3						26.4	25.9	180	
185						25.1						25.3	24.8	185	
190						24.1						24.2	23.9	190	
195													22.9	195	

**LJ Load Chart**

SCA2600A Luffing Jib (without boom tip sheave block)															
Boom 85.3 ft-203.4ft; Jib 68.9ft-206.6ft; Rear counterweight 220.5Klb; Carbody counterweight 88.2Klb															
Boom length (ft)		144.4												Boom length (ft)	
Jib length (ft)		147.6						157.5						Jib length (ft)	
Radius(ft)	Boom Angle(°)	88	85	80	75	70	65	88	85	80	75	70	65	Radius(ft)	Boom Angle(°)
60		87						79.1						60	
65		86.4						78.5						65	
70		85.6						77.9						70	
75		85	84.7					77.3	77.1					75	
80		83.9	82.7					76.6	76.4					80	
85		81.4	77.9					76	75.8					85	
90		77.1	73.6					74.7	72.2					90	
95		73	69.7					71.8	68.6					95	
100		69.3	66.1	60.9				68.2	65	59.9				100	
105		65.9	62.9	57.9				64.9	61.7	56.9				105	
110		62.8	59.8	55.1				61.8	58.8	54.1				110	
115		60	57.2	52.5				59	56.2	51.5				115	
120		57.4	54.7	50.1	47.4			56.4	53.7	49.2				120	
125		54.9	52.3	47.9	45.4			54.1	51.3	47.1	43.9			125	
130		52.7	50.1	45.9	43.4			51.8	49.1	44.9	42			130	
135		50.6	48.1	44.1	41.6			49.7	47.1	43.1	40.2			135	
140		48.1	46.2	42.4	39.8			47.7	45.2	41.4	38.4			140	
145		44.9	44.4	40.7	38.1	35.4		45.7	43.5	39.7	36.9			145	
150		41.2	42.6	39	36.7	34		43.5	42	38.2	35.5			150	
155			40.8	37.6	35.4	32.6		40.4	40.3	36.8	34.2	30.8		155	
160				36.1	34	31.4		36.9	38.7	35.4	32.8	29.6		160	
165				34.4	32.6	30.2	28.5		37	34	31.6	28.4		165	
170				33.1	31.3	29	27.4		35.5	32.7	30.3	27.3		170	
175					29.9	27.8	26.3			31.4	29.1	26.4	25.6	175	
180					28.7	26.6	25.2			30.1	28	25.4	24.5	180	
185						25.5	24.2				26.9	24.2	23.5	185	
190						24.6	23.2				25.9	23.2	22.6	190	
195						23.4	22.2				24.7	22.2	21.7	195	
200							21.3					21.4	20.8	200	
205							20.4						19.8	205	
210							19.4						19	210	
215													18.3	215	
220														220	
225														225	
230														230	
235														235	

**LJ Load Chart**

SCA2600A Luffing Jib (without boom tip sheave block)															
Boom 85.3 ft-203.4ft; Jib 68.9ft-206.6ft; Rear counterweight 220.5Klb; Carbody counterweight 88.2Klb															
Boom length (ft)		144.4												Boom length (ft)	
Jib length (ft)		167.3						177.2						Jib length (ft)	
Radius(ft)	Boom Angle(°)	88	85	80	75	70	65	88	85	80	75	70	65	Radius(ft)	Boom Angle(°)
60		71.9												60	
65		71.3												65	
70		70.8						59.5						70	
75		70.3						59						75	
80		69.6	69.3					58.6	58.4					80	
85		69	68.9					58.3	57.9					85	
90		68.5	68.3					57.9	57.5					90	
95		67.9	66.6					57.4	57					95	
100		66.6	63.9					57	56.6					100	
105		63.7	60.7	55.8				56.5	56.4	54				105	
110		60.6	57.8	53				56.1	55.9	52				110	
115		58	55.2	50.5				55.7	54.2	49.7				115	
120		55.5	52.7	48.2				54.5	51.9	47.4				120	
125		53.1	50.3	46.1				52.3	49.5	45.3				125	
130		50.8	48.1	44				50	47.3	43.4				130	
135		48.7	46.1	42.2	40.5			47.9	45.4	41.5	38.9			135	
140		46.8	44.3	40.6	38.7			46	43.6	39.8	37.2			140	
145		45	42.7	38.9	37.1			44.2	41.9	38.1	35.7			145	
150		43.4	41	37.4	35.7			42.6	40.4	36.6	34.3			150	
155		41.5	39.5	35.9	34.2	29.2		40.6	38.9	35.2	32.9			155	
160		39.1	38	34.5	32.8	28		37.8	37.4	33.9	31.5	28.9		160	
165		36.3	36.6	33.3	31.6	26.8		34.5	36	32.7	30.3	27.7		165	
170		33.3	35.1	32	30.5	25.9		31.6	34.7	31.4	29.2	26.7		170	
175			33.7	30.9	29.4	24.9			33.4	30.3	28.2	25.6		175	
180				29.7	28.3	23.9	23.4		32.2	29.2	27.1	24.6		180	
185				28.5	27.1	23	22.5		30.9	28.1	26.2	23.7	22	185	
190				27.3	26.1	22.1	21.7		29.7	27.1	25.3	22.9	21	190	
195					25.1	21.3	20.8			26	24.2	21.9	20.3	195	
200					24.1	20.4	20			24.9	23.2	21.1	19.6	200	
205						19.6	19.2				22.3	20.3	18.8	205	
210						18.8	18.5				21.5	19.5	18.1	210	
215						18.1	17.7				20.6	18.7	17.3	215	
220							16.9					17.9	16.5	220	
225							16.2						15.8	225	
230													15.2	230	
235													14.5	235	

**LJ Load Chart**

SCA2600A Luffing Jib (without boom tip sheave block)																						
Boom 85.3 ft-203.4ft; Jib 68.9ft-206.6ft; Rear counterweight 220.5Klb; Carbody counterweight 88.2Klb																						
Boom length (ft)		144.4																		Boom length (ft)		
Jib length (ft)		187						196.9						206.7						Jib length (ft)		
Radius(ft)	Boom Angle(°)	88	85	80	75	70	65	88	85	80	75	70	65	88	85	80	75	70	65	Radius(ft)	Boom Angle(°)	
70		59						54.4													70	
75		58.4						53.9						49.3							75	
80		58						53.3						48.9							80	
85		57.7						52.8						48.4							85	
90		57.1	56.9					52.2	52					47.8							90	
95		56.7	56.4					51.7	51.5					47.3	47.1						95	
100		56.2	55.9					51.3	51.1					46.9	46.7						100	
105		55.6	55.4					50.8	50.6					46.4	46.2						105	
110		55.1	54.9					50.3	50					45.9	45.7						110	
115		54.7	53.2	48.7				49.9	49.5	47.1				45.5	45.3						115	
120		53.5	50.9	46.4				49.4	48.8	45.4				45	44.8	43.4					120	
125		51.3	48.7	44.3				48.9	47.7	43.4				44.6	44.4	42.6					125	
130		49.1	46.5	42.4				47.9	45.5	41.5				44.1	43.9	40.6					130	
135		47	44.6	40.5				46.1	43.7	39.7				43.7	42.6	38.7					135	
140		45.1	42.8	38.8	35			44.2	42	38				43	41	37					140	
145		43.5	41.1	37.3	33.5			42.5	40.3	36.5	32.7			41.7	39.3	35.5	31.7				145	
150		41.8	39.4	35.8	32.1			41	38.6	35	31.4			40	37.8	34	30.4				150	
155		40.1	37.9	34.4	31			39.3	37.1	33.6	30.2			38.5	36.3	32.6	29.2				155	
160		38.6	36.4	33	29.8			37.8	35.7	32.2	29			37	34.8	31.3	28				160	
165		37.2	35.1	31.7	28.6	25.4		36.5	34.4	31	27.8			35.6	33.5	30.2	26.8				165	
170		35.9	33.8	30.5	27.3	24.3		35.2	33.1	29.9	26.7			34.3	32.2	28.9	25.7				170	
175		34	32.6	29.5	26.4	23.4		34	32	28.7	25.7	23.4		33	31.1	27.9	24.8				175	
180		31.9	31.5	28.4	25.4	22.5		32.6	30.9	27.7	24.7	22.4		31.9	30	26.8	23.8	20.9			180	
185		29.6	30.5	27.4	24.4	21.6		30.8	29.8	26.7	23.8	21.5		30.8	29	25.8	22.8	20			185	
190		27.1	29.3	26.5	23.5	20.7		28.7	28.9	25.7	22.9	20.7		29.5	28.1	24.9	22	19.1			190	
195			28	25.5	22.7	19.9	19.3	26.6	27.8	24.7	21.9	20		27.7	27	23.9	21.1	18.3			195	
200				24.5	21.9	19.2	18.6		26.7	23.9	21.1	19.2	17.8	25.8	26	23.1	20.3	17.7			200	
205				23.5	21.1	18.5	17.9		25.5	23.1	20.4	18.4	17	23.9	25.1	22.4	19.6	17.1	16.1		205	
210				22.6	20.2	17.9	17.2		24	22.2	19.6	17.6	16.3	21.8	24.2	21.6	18.8	16.3	15.4		210	
215					19.4	17.3	16.5			21.3	19	17	15.6		23.3	20.8	18.3	15.7	14.8		215	
220					18.7	16.6	15.8				20.5	18.3	16.4	15			20.1	17.6	15.1	14.1	220	
225						15.8	15.2					17.6	15.8	14.4			19.3	16.9	14.5	13.5	225	
230						15.1	14.6						15.2	13.9				16.3	13.9	13	230	
235						14.4	13.9							14.5	13.2			15.6	13.4	12.3	235	
240							13.3								13.9	12.6			15	12.8	11.8	240
245								12.7								12.1				12.3	11.3	245
250																11.6				11.8	10.7	250
255																11.1				11.2	10.2	255
260																				9.9		260

**LJ Load Chart**

SCA2600A Luffing Jib (without boom tip sheave block)															
Boom 85.3 ft-203.4ft; Jib 68.9ft-206.6ft; Rear counterweight 220.5Klb; Carbody counterweight 88.2Klb															
Boom length (ft)		173.9												Boom length (ft)	
Jib length (ft)		68.9						78.7						Jib length (ft)	
Radius(ft)	Boom Angle(°)	88	85	80	75	70	65	88	85	80	75	70	65	Radius(ft)	Boom Angle(°)
40		158.1						146.2						40	
45		153.3						142.6						45	
50		144.4	138.8					138.7						50	
55		134.2	127.2					131.6	125.2					55	
60		123.8	117.3					121.6	115.4					60	
65		114.8	108.7					112.9	107					65	
70			101.6					105.6	99.9					70	
75			95.2	86.8				99	93.6	85.4				75	
80			89.4	81.5				93.1	88	80.2				80	
85			84.4	76.7				88	82.8	75.5				85	
90				72.6					78.6	71.4				90	
95				68.9	62.4				74.7	67.7	63.3			95	
100					59.2					64.3	60			100	
105					56.4					61.1	57			105	
110					53.8					58.3	54.3			110	
115					51.3	46.1					51.9			115	
120						44.1					49.7	43.1		120	
125						42.2						41.2		125	
130						40.3						39.5		130	
135							38.4					37.9		135	
140							36.8						35.9	140	
145													34.4	145	
150													32.9	150	
155													31.4	155	
160														160	
165														165	
170														170	

**LJ Load Chart**

SCA2600A Luffing Jib (without boom tip sheave block)															
Boom 85.3 ft-203.4ft; Jib 68.9ft-206.6ft; Rear counterweight 220.5Klb; Carbody counterweight 88.2Klb															
Boom length (ft)		173.9												Boom length (ft)	
Jib length (ft)		88.6						98.4						Jib length (ft)	
Radius(ft)	Boom Angle(°)	88	85	80	75	70	65	88	85	80	75	70	65	Radius(ft)	Boom Angle(°)
40		134.4													40
45		131.9													45
50		129						119.5							50
55		125.1	122.8					117.4							55
60		119.5	113.2					114.5	111.6						60
65		110.9	105					109	103.6						65
70		103.7	98					102.2	96.8						70
75		97.2	91.8					95.8	90.6						75
80		91.4	86.3	78.6				90	85.1	77.4					80
85		86.2	81.5	73.9				84.8	80.3	72.9					85
90		81.7	77.1	70				80.4	76	69					90
95		77.3	73.1	66.3				76.4	72	65.3					95
100			69.6	62.9	61.2			72.7	68.4	61.9					100
105			66.3	59.9	58.2			69.4	65.3	58.9	56.1				105
110				57.2	55.4				62.4	56.2	53.4				110
115				54.7	52.8				59.8	53.7	51				115
120					50.5	42.9				51.4	48.8				120
125					48.4	41.1				49.3	46.6	39.4			125
130					46.5	39.2				47.3	44.7	37.7			130
135					44.6	37.5					42.9	36.1			135
140						36.1	34.7				41.2	34.7			140
145						34.7	33.3					33.3	32.6		145
150						33.3	31.9					31.9	31.3		150
155							30.8					30.9	30.1		155
160							29.5						28.9		160
165													27.8		165
170													26.6		170

**LJ Load Chart**

SCA2600A Luffing Jib (without boom tip sheave block)															
Boom 85.3 ft-203.4ft; Jib 68.9ft-206.6ft; Rear counterweight 220.5Klb; Carbody counterweight 88.2Klb															
Boom length (ft)		173.9												Boom length (ft)	
Jib length (ft)		108.3						118.1						Jib length (ft)	
Radius(ft)	Boom Angle(°)	88	85	80	75	70	65	88	85	80	75	70	65	Radius(ft)	Boom Angle(°)
50		110.1													50
55		108.5						100							55
60		106.8	109.3					98.8							60
65		105	101.7					97.4							65
70		99.9	95					96	93.5						70
75		94.1	88.9					92.3	87.6						75
80		88.4	83.5					87	82.3						80
85		83.4	78.9					82	77.5						85
90		79	74.6	67.6				77.8	73.4						90
95		74.9	70.8	64				73.7	69.6	62.8					95
100		71.2	67.2	60.7				70	66.1	59.6					100
105		67.9	63.9	57.7				66.7	62.9	56.7					105
110		64.8	61	55				63.8	60	54					110
115		59.6	58.3	52.5	52.4			61	57.4	51.6	51.3				115
120			55.9	50.2	50.1			57.8	54.9	49.3	49				120
125				48.1	48				52.7	47.1	46.9				125
130				46.1	45.9				50.5	45.2	44.8				130
135				44.4	44	35.1				43.5	42.9				135
140					42.3	33.6				41.8	41.2	32.7			140
145					40.6	32.2				40.3	39.7	31.4			145
150					39.1	31				38.8	38.2	30.2			150
155					37.6	29.8	29				36.7	29			155
160						28.7	27.8				35.3	27.9	27		160
165						27.6	26.7					26.8	25.8		165
170						26.5	25.7					25.9	24.8		170
175							24.9					25	24		175
180							23.8						23.1		180
185													22.3		185
190													21.5		190
195															195
200															200
205															205
210															210



**LJ Load Chart**

SCA2600A Luffing Jib (without boom tip sheave block)															
Boom 85.3 ft-203.4ft; Jib 68.9ft-206.6ft; Rear counterweight 220.5Klb; Carbody counterweight 88.2Klb															
Boom length (ft)		173.9												Boom length (ft)	
Jib length (ft)		128						137.8						Jib length (ft)	
Radius(ft)	Boom Angle(°)	88	85	80	75	70	65	88	85	80	75	70	65	Radius(ft)	Boom Angle(°)
50														50	
55		92						84.3						55	
60		90.9						83.6						60	
65		90						82.8						65	
70		89	89.9					82						70	
75		87.8	86					81.2	82.1					75	
80		85.6	80.7					80.4	79.8					80	
85		80.7	76.1					79.5	75.1					85	
90		76.4	72					75.4	71					90	
95		72.4	68.3	61.6				71.5	67.3					95	
100		68.8	64.9	58.4				67.8	63.9	57.6				100	
105		65.5	61.7	55.6				64.5	60.7	54.8				105	
110		62.4	58.8	52.8				61.6	57.9	52.2				110	
115		59.7	56.2	50.4				58.9	55.4	49.7				115	
120		57.2	53.7	48.2	47.7			56.4	52.9	47.4				120	
125		54.8	51.5	46.1	45.5			54.1	50.7	45.3	43.1			125	
130		52.2	49.3	44.2	43.6			51.9	48.7	43.5	41.1			130	
135			47.4	42.4	41.8			49.9	46.7	41.7	39.4			135	
140			45.7	40.8	40.1			47	44.9	40	37.8			140	
145				39.1	38.3	30.5			43.3	38.5	36.2	31.4		145	
150				37.7	33.9	29.2			41.8	37	34.9	30.1		150	
155				36.4	32	28				35.7	33.5	28.9		155	
160					30.8	26.9				34.4	32.2	27.8		160	
165					29.8	26	24.7			33.1	31.1	26.8		165	
170					28.7	24.9	23.7			32	29.9	25.7		170	
175						24	22.9				29	24.7	22.2	175	
180							23.2	22			28	23.8	21.3	180	
185							22.4	21.2				23	20.5	185	
190							21.5	20.4				22.2	19.8	190	
195								19.6				21.5	19	195	
200								18.9					18.3	200	
205													17.7	205	
210													17	210	

**LJ Load Chart**

SCA2600A Luffing Jib (without boom tip sheave block)															
Boom 85.3 ft-203.4ft; Jib 68.9ft-206.6ft; Rear counterweight 220.5Klb; Carbody counterweight 88.2Klb															
Boom length (ft)		173.9												Boom length (ft)	
Jib length (ft)		147.6						157.5						Jib length (ft)	
Radius(ft)	Boom Angle(°)	88	85	80	75	70	65	88	85	80	75	70	65	Radius(ft)	Boom Angle(°)
60		76.9						70.5						60	
65		76.1						69.9						65	
70		75.5						69.3						70	
75		74.8	70.4					68.7						75	
80		74	69.7					68.2	68.6					80	
85		73.4	68.6					67.7	68.1					85	
90		72.7	67.2					67.4	67.5					90	
95		70.2	64.6					66.9	65.1					95	
100		66.7	61.4	56.4				65.5	61.7					100	
105		63.5	58.4	53.6				62.5	58.5	52.6				105	
110		60.4	55.6	51				59.6	55.8	50				110	
115		57.8	53.1	48.6				56.8	53.3	47.6				115	
120		55.3	50.8	46.4				54.3	50.9	45.5				120	
125		53.1	48.6	44.3	43.8			52.1	48.7	43.6				125	
130		50.8	46.5	42.5	41.7			49.9	46.7	41.6				130	
135		48.8	44.7	40.7	39.9			47.9	44.8	39.8	39			135	
140		47	43	39	38.3			46	43.1	38.2	37.4			140	
145		45.1	41.3	37.5	36.6			44.2	41.5	36.7	35.7			145	
150		42.2	39.9	36	35.3			42.8	39.8	35.2	34.4			150	
155			38.4	34.7	34	26.5		40.8	38.4	33.9	33.1			155	
160			37	33.5	32.6	25.5		38	37	32.7	31.7	24.7		160	
165				32.3	31.3	24.4			35.7	31.5	30.4	23.6		165	
170				31.1	30.1	23.3			34.4	30.3	29.2	22.7		170	
175				30.1	29.1	22.5				29.3	28.2	21.8		175	
180					28.1	21.7	20.3			28.3	27.2	20.9		180	
185					27	20.8	19.6			27.4	26.3	20	18.8	185	
190					26.1	20	18.8			26.5	25.5	19.2	18	190	
195						19.3	18.1				24.4	18.7	17.2	195	
200						18.7	17.4				23.6	18	16.6	200	
205						18.1	16.6					17.3	15.9	205	
210						17.5	16.1					16.7	15.2	210	
215							15.4					16.1	14.5	215	
220							14.9						14	220	
225													13.5	225	
230														230	
235														235	
240														240	
245														245	

**LJ Load Chart**

SCA2600A Luffing Jib (without boom tip sheave block)															
Boom 85.3 ft-203.4ft; Jib 68.9ft-206.6ft; Rear counterweight 220.5Klb; Carbody counterweight 88.2Klb															
Boom length (ft)		173.9												Boom length (ft)	
Jib length (ft)		167.3						177.2						Jib length (ft)	
Radius(ft)	Boom Angle(°)	88	85	80	75	70	65	88	85	80	75	70	65	Radius(ft)	Boom Angle(°)
60		65.2													60
65		64.6													65
70		61.7						54.6							70
75		60						54.1							75
80		59.5	59.7					53.7							80
85		59	59.2					53.2							85
90		58.6	58.8					52.8	52.8						90
95		58.1	58.4					52.3	52.4						95
100		57.6	57.2					51.9	52.1						100
105		57.2	54.3					51.6	51.6						105
110		55	51.8					51.1	51.3						110
115		52.7	49.4	46.6				50.8	50.6	45.8					115
120		50.4	47.2	44.4				50.4	49.2	43.7					120
125		48.2	45.1	42.4				49.9	47.1	41.8					125
130		46.2	43.2	40.5				48	44.9	39.9					130
135		44.3	41.4	38.8				46.2	43.1	38.2					135
140		42.6	39.8	37.2	36.3			44.4	41.4	36.6	35.5				140
145		41	38.2	35.7	34.6			42.7	39.7	35.1	34				145
150		39.5	36.8	34.3	33.3			41	38.2	33.6	32.6				150
155		31.7	35.4	33	32			39.6	36.8	32.3	31.3				155
160		26.4	34.1	31.7	30.7			38.2	35.4	31.1	30				160
165		24.8	33	30.6	29.6	22.6		36.7	34.1	30	28.9				165
170		23.2	31.8	29.5	28.3	21.7		34.9	32.8	28.9	27.7				170
175			30.7	28.5	27.3	20.8		26.1	31.8	27.9	26.7	20.2			175
180			29.7	27.4	26.3	20			30.7	26.8	25.6	19.4			180
185				26.4	25.3	19.2			29.8	25.8	24.6	18.6			185
190				25.6	24.4	18.5			28.9	24.9	23.7	17.9			190
195				24.7	23.4	17.8	16.2			24.1	22.8	17.3			195
200					22.6	17.1	15.5			23.3	22	16.6	15		200
205					21.8	16.5	14.8				21.2	15.9	14.4		205
210					21.2	15.9	14.3				20.5	15.3	13.7		210
215						15.3	13.6				19.8	14.7	13.2		215
220						14.7	13.1				19.1	14.2	12.5		220
225							12.6					13.7	11.9		225
230							12.1					13.1	11.5		230
235							11.6					12.6	10.9		235
240							11.1						10.4		240
245													10		245

**LJ Load Chart**

SCA2600A Luffing Jib (without boom tip sheave block)																					
Boom 85.3 ft-203.4ft; Jib 68.9ft-206.6ft; Rear counterweight 220.5Klb; Carbody counterweight 88.2Klb																					
Boom length (ft)		173.9																		Boom length (ft)	
Jib length (ft)		187						196.9						206.7						Jib length (ft)	
Radius(ft)	Boom Angle(°)	88	85	80	75	70	65	88	85	80	75	70	65	88	85	80	75	70	65	Radius(ft)	Boom Angle(°)
70		54.2																			70
75		53.7						46.4						45.7							75
80		53.3						49.1						45.3							80
85		52.8						48.6						44.8							85
90		52.5	52.4					48.2						44.4							90
95		52.1	52					47.8	42.5					44	39.1						95
100		51.7	51.7					47.5	42.1					43.7	38.7						100
105		51.2	51.2					47	41.8					43.3	38.4						105
110		50.7	50.7					46.5	41.4					42.8	38						110
115		50.4	49.8					46.2	41					42.5	37.6						115
120		50	48.2	42.8				45.8	40.6	41.8				42.1	37.3						120
125		49.3	46.1	40.8				45.4	40.1	39.8				41.7	37	34.5					125
130		47.3	44.2	38.9				45.1	38.3	38.1				41.4	36.8	33					130
135		45.3	42.3	37.2				44.1	36.8	36.4				41.1	35.8	31.5					135
140		43.5	40.6	35.6				42.8	35.3	34.8				40.7	34.5	30.1					140
145		41.9	38.9	34.1	29.7			41.1	33.8	33.3				40.1	33.1	28.8					145
150		40.2	37.4	32.7	28.4			39.4	32.5	31.9				38.6	31.8	27.5					150
155		38.7	36	31.6	27.2			37.9	31.3	30.8	26.4			37.1	30.5	26.4					155
160		37.2	34.6	30.4	26.1			36.4	30.1	29.6	25.3			35.6	29.3	25.4	27.2				160
165		35.9	33.3	29.2	25			35.1	28.9	28.4	24.2			34.3	28.2	24.3	26				165
170		34.6	32	27.9	23.9			33.8	27.8	27.3	23.3			33	27.1	23.4	24.8				170
175		25.2	31	27	23			32.6	26.9	26.3	22.4			31.8	26.1	22.6	23.8				175
180		19.8	30	26	22.2	18.6		26	25.9	25.3	21.5	17.9		30.7	25.2	21.7	22.9				180
185		18.5	28.9	25	21.4	17.9		17.6	25	24.4	20.6	17.1		27.1	24.3	20.8	22	17.9			185
190		17.4	27.9	24.1	20.5	17.1		16.6	24.2	23.5	19.7	16.3		16.2	23.5	20.1	21	17.2			190
195			27.1	23.3	19.7	16.4		15.5	23.4	22.5	18.9	15.7		14.3	22.7	19.3	20.1	16.4			195
200			26.2	22.5	19	15.7			22.6	21.7	18.3	15		13.3	21.9	18.6	19.4	15.7			200
205				21.8	18.3	15.1	13.3		21.8	21	17.7	14.3		12.5	21.1	18	18.7	15			205
210				21	17.7	14.5	12.8		21.2	20.2	16.9	13.7	11.9	11.7	20.5	17.3	17.9	14.3			210
215				20.2	17.1	13.9	12.1			19.6	16.3	13.2	11.4		19.8	16.8	17.2	13.6			215
220					16.5	13.3	11.5			18.9	15.7	12.7	10.8			16.1	16.5	13.1	9.8		220
225					15.9	12.7	11					15.1	12.1	10.2		15.5	15.8	12.5	9.3		225
230						12.3	10.6					14.5	11.7	9.7		15	15.2	11.9	8.8		230
235						11.8	10					14	11	9.4		14.4	14.7	11.3	8.3		235
240						11.4	9.6					13.6	10.6	8.9			14.2	10.9	7.9		240
245							9.1						10.1	8.4			13.6	10.4	7.5		245
250							8.7						9.7	7.9				9.9	7		250
255							8.3						9.4	7.6				9.6	6.7		255
260														7.1				9.1	6.2		260
265															6.6				5.8		265
270																			5.4		270
275																			5.1		275

**LJ Load Chart**

SCA2600A Luffing Jib (without boom tip sheave block)															
Boom 85.3 ft-203.4ft; Jib 68.9ft-206.6ft; Rear counterweight 220.5Klb; Carbody counterweight 88.2Klb															
Boom length (ft)		203.4												Boom length (ft)	
Jib length (ft)		68.9						78.7						Jib length (ft)	
Radius(ft)	Boom Angle(°)	88	85	80	75	70	65	88	85	80	75	70	65	Radius(ft)	Boom Angle(°)
40		126.7						118.5						40	
45		122.4						114.9						45	
50		118.2						111.4						50	
55		114.1	119.3					108	114.7					55	
60		110.3	110.1					104.6	108.3					60	
65		106.8	102.3					101.2	100.5					65	
70		101.9	95.7					98.1	94.1					70	
75		96.5	89.8	79.7				94	88.2					75	
80			84.5	74.9				89	82.9	73.5				80	
85			79.9	70.7				84.2	78.3	69.3				85	
90			75.9	66.9					74.3	65.7				90	
95				63.4					70.7	62.3				95	
100				60.2	58.8					59.2				100	
105				57.3	55.8					56.4	54.7			105	
110					53.3					53.8	52.2			110	
115					50.9					51.4	49.8			115	
120					48.6	37.9					47.5			120	
125						36.2					45.5	35.2		125	
130						34.5					43.6	33.7		130	
135						33.1						32.3		135	
140							29.9						31	140	
145							28.8					29.9	27.9	145	
150							27.5					28.6	26.7	150	
155							26.4						25.6	155	
160													24.6	160	
165														165	
170														170	
175														175	
180														180	

**LJ Load Chart**

SCA2600A Luffing Jib (without boom tip sheave block)															
Boom 85.3 ft-203.4ft; Jib 68.9ft-206.6ft; Rear counterweight 220.5Klb; Carbody counterweight 88.2Klb															
Boom length (ft)		203.4											Boom length (ft)		
Jib length (ft)		88.6					98.4						Jib length (ft)		
Radius(ft)	Boom Angle(°)	88	85	80	75	70	65	88	85	80	75	70	65	Radius(ft)	Boom Angle(°)
40														40	
45														45	
50	104.8							98.3						50	
55	102							96						55	
60	99.1	105.8						93.6	99.5					60	
65	96.2	98.7						91.4	96.7					65	
70	93.3	92.4						89	91.1					70	
75	90.6	86.6						86.5	85.5					75	
80	87.4	81.3						84	80.3					80	
85	82.6	76.9						81.4	75.9					85	
90	78.4	72.8	64.3					77.2	71.8	63.4				90	
95	74.5	69.1	60.9					73.3	68.1	60.1				95	
100		65.7	57.8					69.8	64.9	57				100	
105		62.7	55	53.4				66.7	61.7	54.2				105	
110			52.5	50.8					58.9	51.7				110	
115			50.2	48.4					56.6	49.4	47.7			115	
120			34.8	46.2						47.3	45.6			120	
125				44.2						45.3	43.6			125	
130				42.3						43.5	41.7			130	
135				40.6	31.3					41.8	39.9			135	
140				39	30						38.3	29.5		140	
145					28.7						36.8	28.3		145	
150					27.6						35.5	27		150	
155					26.5	24.5						25.9		155	
160						23.5						24.9	22.9	160	
165						22.5						24	21.8	165	
170						21.7						23.1	21	170	
175						20.9							20.2	175	
180													19.5	180	

**LJ Load Chart**

SCA2600A Luffing Jib (without boom tip sheave block)															
Boom 85.3 ft-203.4ft; Jib 68.9ft-206.6ft; Rear counterweight 220.5Klb; Carbody counterweight 88.2Klb															
Boom length (ft)		203.4												Boom length (ft)	
Jib length (ft)		108.3						118.1						Jib length (ft)	
Radius(ft)	Boom Angle(°)	88	85	80	75	70	65	88	85	80	75	70	65	Radius(ft)	Boom Angle(°)
50	91.8													50	
55	90								84.5					55	
60	88.1								83					60	
65	86.1								81.6					65	
70	84.3	88.2							80.1	84				70	
75	82.4	83.8							78.5	81.4				75	
80	80.6	78.8							76.8	77.5				80	
85	78.9	74.3							75.1	73.1				85	
90	75.5	70.4							73.4	69.3				90	
95	71.9	66.9	58.7						70.7	65.7	57.6			95	
100	68.4	63.5	55.7						67.3	62.3	54.7			100	
105	65.3	60.5	53						64.1	59.3	52			105	
110	62.4	57.7	50.5						61.2	56.8	49.5			110	
115	59.5	55.3	48.2						58.6	54.3	47.3			115	
120		53	46.1	44.2					56.3	52	45.3	43.3		120	
125			44.1	42.2						49.9	43.4	41.3		125	
130			42.3	40.5						47.9	41.5	39.4		130	
135			40.7	38.8						46	39.8	37.8		135	
140			39.2	37.2							38.2	36.4		140	
145				35.7	27.1						36.7	34.9	26.3	145	
150				34.4	26						35.3	33.5	25.2	150	
155				33.1	24.9							32.2	24.1	155	
160				31.8	23.9							30.9	23.1	160	
165					23	20.7						29.8	22.2	165	
170					22.1	19.9						28.8	21.3	170	
175					21.3	19.1							20.5	175	
180						18.4							19.8	180	
185						17.7							19	185	
190						17							18.3	190	
195						16.3								195	
200														200	
205														205	
210														210	
215														215	
220														220	

**LJ Load Chart**

SCA2600A Luffing Jib (without boom tip sheave block)															
Boom 85.3 ft-203.4ft; Jib 68.9ft-206.6ft; Rear counterweight 220.5Klb; Carbody counterweight 88.2Klb															
Boom length (ft)		203.4												Boom length (ft)	
Jib length (ft)		128						137.8						Jib length (ft)	
Radius(ft)	Boom Angle(°)	88	85	80	75	70	65	88	85	80	75	70	65	Radius(ft)	Boom Angle(°)
50														50	
55			78.8					73.1						55	
60			77.6					72.2						60	
65			76.3					71.3						65	
70			75.1					70.4						70	
75			73.9	77.1				69.4	71.6					75	
80			72.6	75.4				68.4	70.8					80	
85			71.3	71.6				67.4	70					85	
90			69.9	67.9				66.3	66.9					90	
95			68.3	64.4				65.2	63.6					95	
100			66.1	61.2	53.5			63.9	60.3					100	
105			62.9	58.3	50.8			62.1	57.3	50				105	
110			60.1	55.6	48.3			59.2	54.8	47.7				110	
115			57.6	53.1	46.1			56.7	52.3	45.5				115	
120			55.1	50.8	44.1			54.3	50	43.5				120	
125			52.9	48.7	42.2	40		52.1	47.9	41.6				125	
130			50.7	46.7	40.5	38.3		49.9	45.9	39.7				130	
135			47.8	44.8	38.8	36.6		44.3	44.2	38.1	36			135	
140				43.2	37.2	35.1		39.2	42.6	36.6	34.5			140	
145					35.7	33.8			40.9	35.1	33.1			145	
150					34.3	32.4			39.4	33.7	31.7			150	
155					33.1	31.1	23.1		38.1	32.5	30.4			155	
160					32	29.9	22.1			31.3	29.3	21.5		160	
165						28.9	21.2			30.2	28.2	20.6		165	
170						27.7	20.5			29.3	27	19.9		170	
175	18.4					26.7	19.6				26.2	19.1		175	
180	17.6					25.7	18.8				25.2	18.4		180	
185	16.8						18.1				24.3	17.7	15.2	185	
190	16.1						17.5				23.5	16.9	14.6	190	
195	15.4						16.9					16.3	13.9	195	
200	14.9											15.7	13.4	200	
205												15.1	12.8	205	
210												14.5	12.1	210	
215													11.6	215	
220													11.1	220	



**LJ Load Chart**

SCA2600A Luffing Jib (without boom tip sheave block)															
Boom 85.3 ft-203.4ft; Jib 68.9ft-206.6ft; Rear counterweight 220.5Klb; Carbody counterweight 88.2Klb															
Boom length (ft)		203.4												Boom length (ft)	
Jib length (ft)		147.6						157.5						Jib length (ft)	
Radius(ft)	Boom Angle(°)	88	85	80	75	70	65	88	85	80	75	70	65	Radius(ft)	Boom Angle(°)
60		67.2						62.4							60
65		66.4						61.8							65
70		65.6						61.2							70
75		64.9						60.5							75
80		64.1	65.7					59.7	60.9						80
85		63.2	65.1					59.1	60.3						85
90		62.4	64.5					58.4	59.9						90
95		61.5	62.3					57.7	59.4						95
100		60.6	59.2					57.1	58.2						100
105		59.7	56.4	48.8				56.4	55.4						105
110		57.9	53.8	46.5				55.6	52.8						110
115		55.6	51.3	44.4				54.2	50.3	43.4					115
120		53.1	49	42.4				52.3	48.1	41.4					120
125		50.9	46.9	40.6				50.1	46.1	39.6					125
130		48.9	44.9	38.7				47.9	44.2	37.9					130
135		47	43.2	37.1				46	42.3	36.3					135
140		42.8	41.6	35.6	33.4			44.3	40.6	34.8	32.5				140
145		36	39.9	34.1	32			41.9	39.1	33.3	31.1				145
150		33.7	38.4	32.7	30.6			33.9	37.6	31.9	29.7				150
155			37	31.6	29.5			30.8	36.2	30.8	28.6				155
160			35.7	30.5	28.3			28.8	34.9	29.7	27.4				160
165				29.4	27.1	19.6			33.7	28.6	26.3				165
170				28.3	26.1	18.9			32.4	27.5	25.2				170
175				27.3	25.1	18.2			31.6	26.6	24.2	17.4			175
180				26.4	24.2	17.5				25.7	23.3	16.7			180
185					23.4	16.7				20.1	22.5	15.9			185
190					22.6	16.1				-	21.7	15.3			190
195					21.7	15.5	13				20.8	14.7			195
200						14.9	12.4				20.1	14.1	11.5		200
205						14.3	11.7				19.4	13.5	10.9		205
210						13.7	11.2				18.7	12.9	10.4		210
215						13.1	10.7					12.4	9.9		215
220							10.2					12	9.3		220
225							9.7					11.5	8.9		225
230							9.3						8.6		230
235							8.9						8		235
240													7.7		240
245															245
250															250
255															255
260															260

**LJ Load Chart**

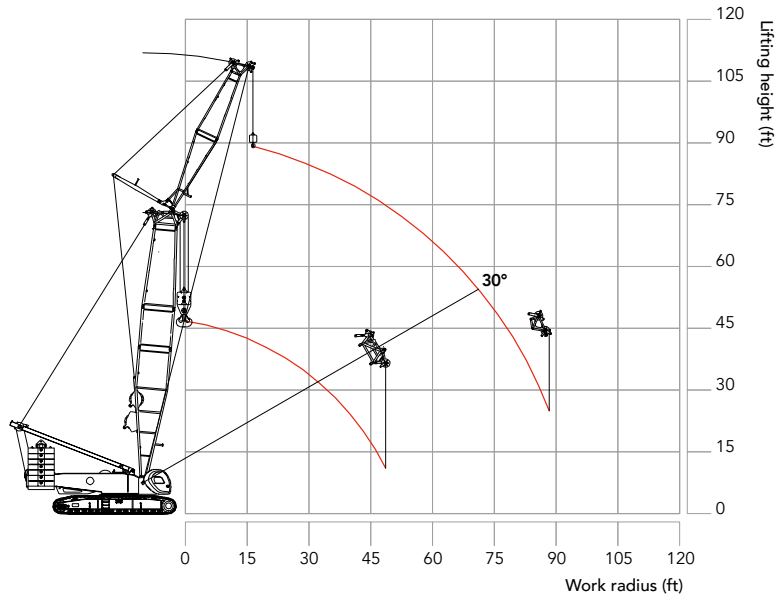
SCA2600A Luffing Jib (without boom tip sheave block)															
Boom 85.3 ft-203.4ft; Jib 68.9ft-206.6ft; Rear counterweight 220.5Klb; Carbody counterweight 88.2Klb															
Boom length (ft)		203.4												Boom length (ft)	
Jib length (ft)		167.3						177.2						Jib length (ft)	
Radius(ft)	Boom Angle(°)	88	85	80	75	70	65	88	85	80	75	70	65	Radius(ft)	Boom Angle(°)
60														60	
65														65	
70		56.8						49						70	
75		56.2						48.5						75	
80		55.7						48.1						80	
85		55.2						47.6						85	
90		54.6	55.6					47.3	47.7					90	
95		54	55.1					46.9	47.3					95	
100		53.5	54.7					46.5	46.9					100	
105		53	54.2					46	46.6					105	
110		52.4	51.6					45.5	46.3					110	
115		51.8	49.2	42.4				45.1	45.9					115	
120		50.8	47.1	40.4				44.7	45.3	39.8				120	
125		49.1	45.1	38.6				44.4	44.3	37.8				125	
130		47.1	43.2	36.9				43.9	42.5	36.1				130	
135		45.1	41.4	35.3				43.5	40.7	34.5				135	
140		43.3	39.8	33.8				42.6	39	33.1				140	
145		41.7	38.1	32.4	30			41.1	37.5	31.8				145	
150		40.2	36.7	31.2	28.6			39.6	36	30.6				150	
155		33	35.4	30	27.5			37.6	34.6	29.4	26.8			155	
160		27.9	34	28.8	26.3			35.6	33.3	28.2	25.7			160	
165		26.1	32.7	27.6	25.2			33.7	32.1	27	24.7			165	
170		24.6	31.6	26.5	24.1			31.9	31.1	26.1	23.7			170	
175			30.6	25.6	23.3	16.4		25.1	30.1	25.1	22.7			175	
180			29.6	24.7	22.3	15.8		20.9	29	24.1	21.8	15.3		180	
185				23.8	21.4	15.1			28	23.2	21	14.5		185	
190				23	20.7	14.5			27.1	22.4	20.2	13.9		190	
195				22.1	19.9	13.9				21.7	19.3	13.3		195	
200				21.4	19.2	13.3				20.9	18.6	12.7		200	
205					18.4	12.7	10			20.2	17.9	12.2		205	
210					17.6	12.1	9.5			19.4	17.2	11.7	8.8	210	
215					17.1	11.6	9				16.5	11.1	8.3	215	
220						11.2	8.5				15.8	10.6	7.9	220	
225						10.7	8.1				15.2	10.1	7.5	225	
230						10.1	7.7					9.7	7.1	230	
235						9.8	7.2					9.2	6.7	235	
240							6.8					8.8	6.3	240	
245							6.4						5.8	245	
250													5.5	250	
255													5.2	255	
260													4.8	260	

## LJ Load Chart

SCA2600A Luffing Jib (without boom tip sheave block)																						
Boom 85.3 ft-203.4ft; Jib 68.9ft-206.6ft; Rear counterweight 220.5Klb; Carbody counterweight 88.2Klb																						
Boom length (ft)		203.4																		Boom length (ft)		
Jib length (ft)		187						196.9						206.7						Jib length (ft)		
Radius(ft)	Boom Angle(°)	88	85	80	75	70	65	88	85	80	75	70	65	88	85	80	75	70	65	Radius(ft)	Boom Angle(°)	
60		49.3																			60	
65		48.9																				65
70		48.4																				70
75		47.9						44.9						41.8								75
80		47.5						44.5						41.4								80
85		47						44.2						41.1								85
90		46.6	47.5					43.8						40.7								90
95		46.2	47.1					43.5	43.7					40.3	40.3							95
100		45.9	46.7					43.2	43.4					40	40							100
105		45.4	46.4					42.7	42.9					39.7	39.7							105
110		44.9	46.1					42.4	42.6					39.2	39.4							110
115		44.6	45.7					42	42.3					38.9	39.1							115
120		44.2	44.9	38.6				41.6	42					38.6	38.8							120
125		43.7	43.4	36.8				41.3	41.6	36				38.3	38.5							125
130		42.7	41.5	35.3				41	40.6	34.3				38	38.2							130
135		41.2	39.8	33.7				40.7	39	32.7				37.7	37.5	31.9						135
140		39.6	38.2	32.3				40.2	37.4	31.3				37.4	36.4	30.6						140
145		38.1	36.5	30.9				39.3	35.7	30.1				37.1	34.9	29.2						145
150		36.7	35.1	29.6				37.8	34.3	28.8				36.8	33.5	27.8						150
155		35.3	33.8	28.4	25.7			36.4	33	27.6				35.6	32.2	26.7						155
160		33.6	32.5	27.3	24.6			35	31.7	26.5	23.8			34.2	30.9	25.7						160
165		30.4	31.3	26.2	23.6			33.6	30.6	25.4	22.7			32.9	29.8	24.6	21.6					165
170		21.6	30.1	25.1	22.6			32.1	29.5	24.3	21.7			31.6	28.5	23.5	20.8					170
175		19.5	29.1	24.2	21.8			30.5	28.5	23.4	20.9			30.2	27.6	22.6	19.8					175
180		18.4	28.1	23.3	20.8			24.8	27.4	22.5	20			28.9	26.6	21.7	18.9					180
185			27.2	22.4	19.9	13.7		17.8	26.4	21.6	19.2			27.6	25.6	20.8	18.1					185
190			26.3	21.6	19.2	12.9		16.6	25.5	20.8	18.4			26.1	24.7	20	17.4					190
195			25.3	20.7	18.4	12.3		15.5	24.5	20.1	17.5	11.7		17.3	23.7	19.3	16.6					195
200			24.5	20	17.7	11.8			23.7	19.3	16.8	11.1		13.4	22.9	18.6	15.9	10.2				200
205				19.4	17	11.3			23	18.6	16.1	10.6		12.6	22.2	17.9	15.2	9.7				205
210				18.7	16.3	10.7			22.2	18.1	15.4	10.1		11.7	21.4	17.3	14.6	9.1				210
215				18.1	15.6	10.2				17.3	14.8	9.5			20.6	16.5	13.9	8.6				215
220				17.5	15	9.8	6.9			16.7	14.2	9			20	15.9	13.3	8.2				220
225					14.4	9.3	6.5			16.1	13.6	8.5	5.8			15.3	12.7	7.7	4.8			225
230					13.9	8.9	6.2				13	8.1	5.3				12.1	7.3	4.4			230
235					13.3	8.4	5.6				12.4	7.8	5				11.6	6.8	4.1			235
240						8	5.3				12	7.4	4.6				11.1	6.5	3.6			240
245						7.6	4.9				11.5	6.9	4.2				10.6	6.1	3.2			245
250						7.2	4.6					6.5	3.7				10.1	5.8	2.8			250
255						6.8	4.3						6.2	3.4			9.8	5.5	2.5			255
260							3.9						6	3.1				5.2	0.9			260
265							3.5							2.7								265

## Heavy Fixed Jib Configuration

### Heavy Fixed Jib Configuration (boom to jib angle 20°)



#### SCA2600A Heavy Fixed Jib Configuration

1) Boom to jib angle 20°; 2) Rear counterweight 220.5 Klb, car-body counterweight 88.2Klb  
Boom length 65.6 ft Jib length 39.4 ft

Radius ft	Boom hook capacity (empty jib hook) Klb	Jib hook (empty boom hook) Klb	Radius ft
16.4	549	-	16.4
17	540.2	-	17
20	493.0	-	20
25	396.8	-	25
30	327.4	-	30
35	283.6	205.7	35
40	228.8	191.1	40
45	188.1	167.4	45
50	158.9	147.8	50
55	134.2	130.6	55
60	113.5	115.5	60
65	-	103.4	65
70	-	93.4	70
75	-	84.7	75
80	-	77.2	80
85	-	70.7	85
90	-	65.2	90
95	-	60.1	95