



SCA1350A
SANY CRAWLER CRANE
150 UST (136 mt) LIFTING CAPACITY
MADE FOR AMERICA

Technical Parameters

- Page 10 Major Performance Specifications
- Page 11 Outline Dimension
- Page 12 Transport Dimension
- Page 17 Transportation Plan

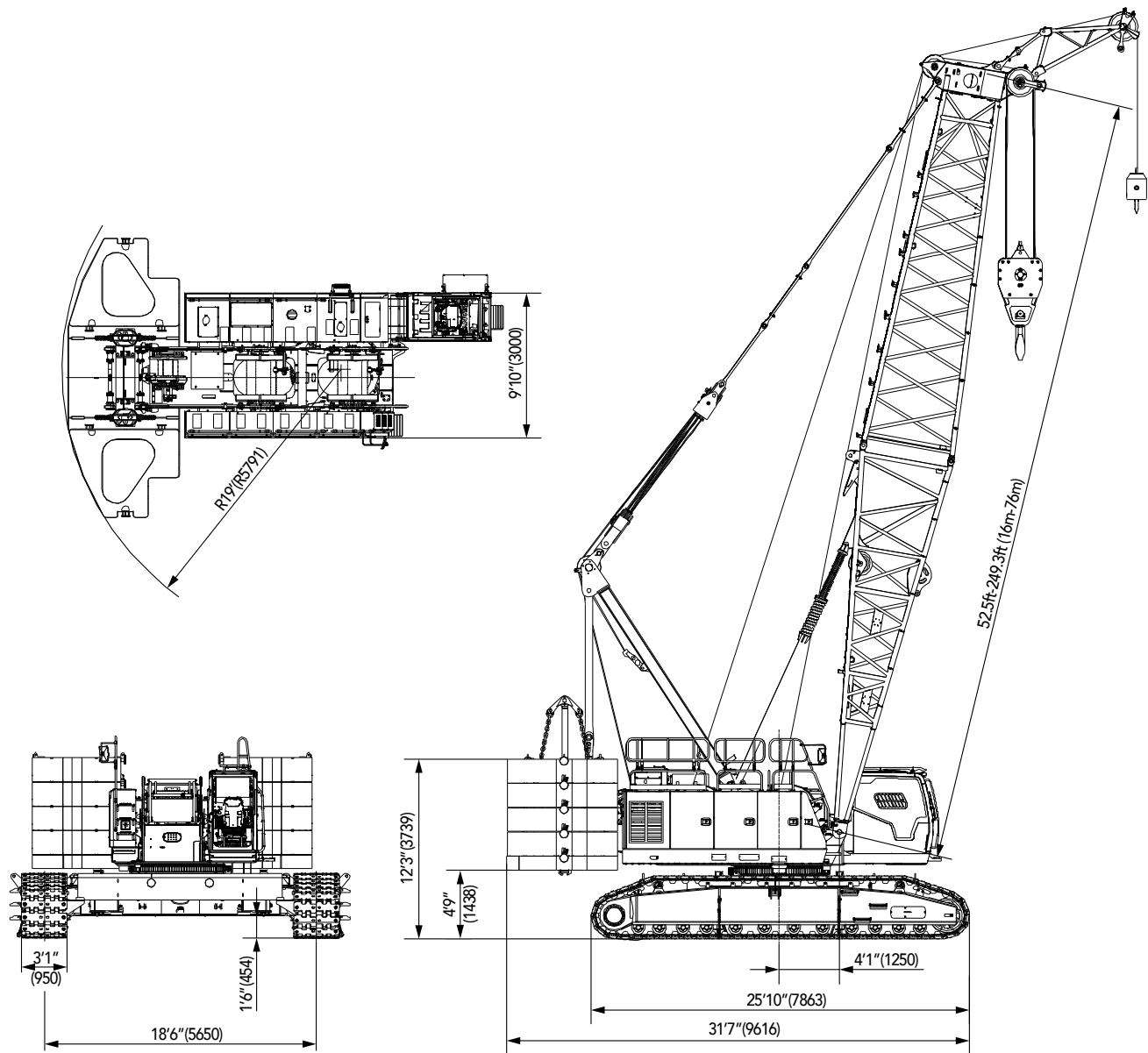


Major Performance Specifications

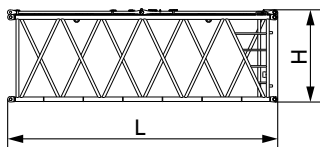
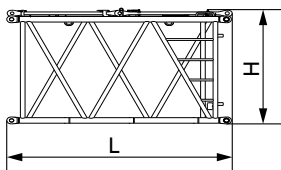
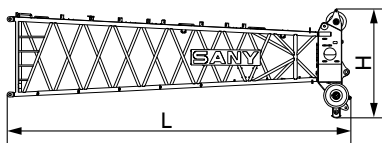
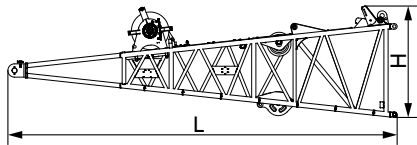
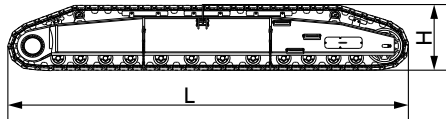
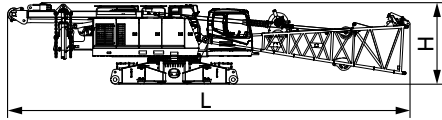
Major Performance & Specifications of SCA1350A			
Performance Indicators		Unit	Parameter
Boom configuration	Maximum rated lifting capacity	Klb (mt)	300 (136)
	Maximum rated lifting moment	Klb*ft (mt*m)	210.3*23 (95.4 * 7)
	Boom length	ft (m)	52.5~249.3 (16~76)
	Boom Angle	°	30~85
Fixed jib configuration	Maximum rated lifting capacity	Klb (mt)	59.5 (27)
	Jib length	ft (m)	42.7~101.7 (13~31)
	Longest main boom + jib	ft (m)	200.1~101.7 (61+31)
	Jib angle offset	°	10, 30
Luffing jib configuration	Maximum rated lifting capacity	Klb (mt)	88.2 (40)
	Jib length	ft (m)	72.2~170.6 (22~52)
	Longest main boom + jib	ft (m)	160.8~170.6 (49+52)
Operation speed	Rope speed of main/aux. hoist (1st layer)	ft/min (m/min)	397.0 121
	Rope speed of boom hoist (1st layer)	ft/min (m/min)	147.6 45
	Swing speed	rpm	2.2
	Travel speed	mile/h (km/h)	0.8 1.3
Engine	Output power	HP	325
	Rated speed	rpm	1800
Transport parameter	Weight of machine with basic boom (including basic boom, extension jib, jib luffing winch, 150 UST hook and 15 UST hook)	Klb (mt)	329.2 (149.34)
	Maximum transport weight of basic machine (including base)	Klb (mt)	88.2 (40)
	Maximum transport dimension of basic machine (L x W x H)	ft (m)	52.7*9.8*10.7 (16.1x3x3.3)
Other parameters	Average ground bearing pressure	PSI	16
	Grade ability	%	30

Unit: ft (mm)

Outline Dimension



Transportation Dimensions



Basic machine (with boom base and jib luffing winch) ×1

Length (L)	52.7ft (16.05m)
Width (W)	9.8ft (3.00m)
Height (H)	10.7ft (3.25m)
Weight	88.2Klb (40mt)

Note: the weight of jib luffing winch and wire rope is 4.14Klb (1.88mt)

Crawler assembly ×2

Length (L)	25.8ft (7.86m)
Width (W)	4.3ft (1.32m)
Height (H)	4.3ft (1.32m)
Weight	33.1Klb (15mt)

Boom base (with jib luffing winch) ×1

Length (L)	26.9ft (8.21m)
Width (W)	6.8ft (2.08m)
Height (H)	7.3ft (2.24m)
Weight	12.7Klb (5.78mt)

Note: the weight of jib luffing winch and wire rope is 4.14Klb (1.88mt)

Boom top ×1

Length (L)	27.6ft (8.42m)
Width (W)	6.4ft (1.96m)
Height (H)	8.7ft (2.66m)
Weight	5.6Klb (2.55mt)

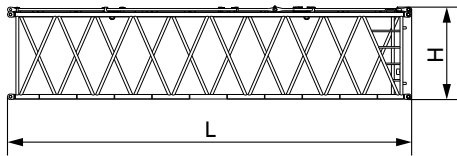
3m insert of main boom ×1

Length (L)	10.3ft (3.15m)
Width (W)	6.8ft (2.06m)
Height (H)	6.9ft (2.09m)
Weight	1.4Klb (0.62mt)

6m insert of main boom ×2

Length (L)	20.1ft (6.14m)
Width (W)	6.8ft (2.06m)
Height (H)	6.8ft (2.08m)
Weight	2.3Klb (1.04mt)

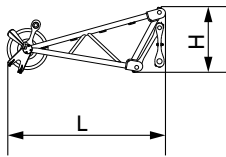
Transportation Dimensions



9m insert of main boom

×5

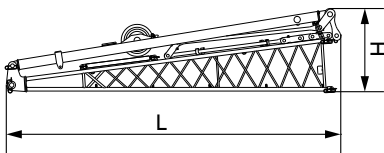
Length (L)	30.0ft (9.14m)
Width (W)	6.8ft (2.06m)
Height (H)	6.8ft (2.08m)
Weight	3.3Klb (1.49mt)



Auxiliary tip extension

×1

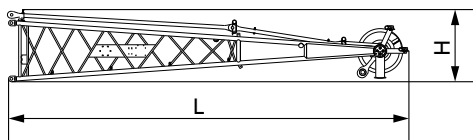
Length (L)	7.7ft (2.36m)
Width (W)	3.4ft (1.04m)
Height (H)	3.2ft (0.98m)
Weight	0.7Klb (0.3mt)



Fixed jib base(including strut)

×1

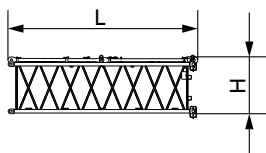
Length (L)	17.2ft (5.25m)
Width (W)	3.9ft (1.19m)
Height (H)	4.3ft (1.30m)
Weight	1.9Klb (0.84mt)



Fixed jib top

×1

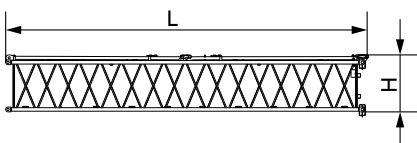
Length (L)	17.8ft (5.43m)
Width (W)	3.3ft (1.01m)
Height (H)	3.2ft (0.99m)
Weight	1.2Klb (0.53mt)



3m insert of fixed jib

×1

Length (L)	10.2ft (3.12m)
Width (W)	3.3ft (1.02m)
Height (H)	3.0ft (0.92m)
Weight	0.4Klb (0.19mt)

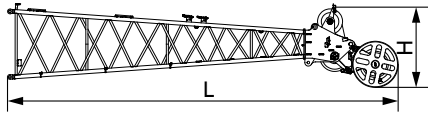


6m insert of fixed jib

×3

Length (L)	20.1ft (6.12m)
Width (W)	3.3ft (1.02m)
Height (H)	3.0ft (0.92m)
Weight	0.7Klb (0.34mt)

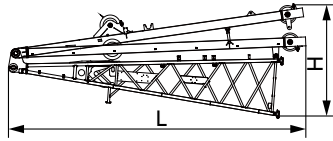
Transportation Dimensions



Luffing jib top

×1

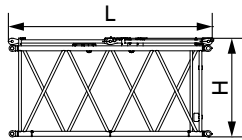
Length (L)	25.6ft (7.81m)
Width (W)	4.5ft (1.38m)
Height (H)	4.8ft (1.45m)
Weight	2.6Klb (1.17mt)



Luffing jib base (with struts)

×1

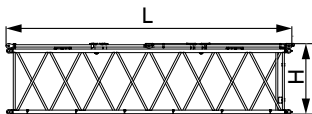
Length (L)	23.8ft (7.26m)
Width (W)	6.1ft (1.87m)
Height (H)	8.9ft (2.7m)
Weight	6.9Klb (3.13mt)



3m luffing jib insert

×2

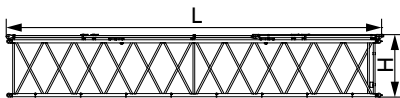
Length (L)	10.2ft (3.1m)
Width (W)	4.6ft (1.4m)
Height (H)	4.9ft (1.5m)
Weight	0.7Klb (0.3mt)



6m luffing jib insert

×1

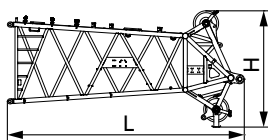
Length (L)	20.0ft (6.1m)
Width (W)	4.6ft (1.4m)
Height (H)	4.9ft (1.5m)
Weight	1.1Klb (0.49mt)



9m luffing jib insert

×3

Length (L)	29.9ft (9.1m)
Width (W)	4.6ft (1.4m)
Height (H)	5.2ft (1.6m)
Weight	1.5Klb (0.7mt)

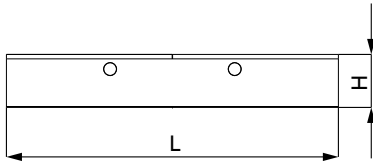


Boom top (special for L)

×1

Length (L)	18.7ft (5.7m)
Width (W)	6.4ft (1.95m)
Height (H)	9.2ft (2.8m)
Weight	4.2Klb (1.9mt)

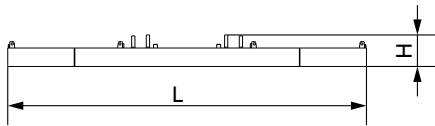
Transportation Dimensions



Carbody counterweight

×2

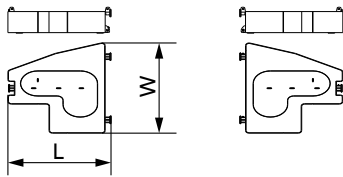
Length (L)	13.9ft (4.25m)
Width (W)	4.9ft (1.5m)
Height (H)	1.8ft (0.55m)
Weight	22.0Klb (10t)



Rear counterweight tray

×1

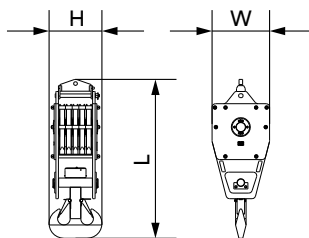
Length (L)	19.0ft (5.8m)
Width (W)	7.6ft (2.31m)
Height (H)	1.6ft (0.5m)
Weight	26.5Klb (12mt)



Rear counterweight

(1+1)×4

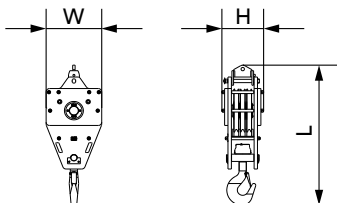
Length (L)	6.3ft (1.93m)
Width (W)	7.5ft (2.28m)
Height (H)	2.0ft (0.6m)
Weight	11.6Klb (5.25mt)



150 UST lifting hook

×1

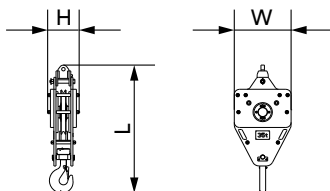
Length (L)	7.5ft (2.28m)
Width (W)	3.0ft (0.91m)
Height (H)	2.3ft (0.69m)
Weight	4.5Klb (2.04mt)



88 UST lifting hook

×1

Length (L)	7.3ft (2.21m)
Width (W)	3.0ft (0.91m)
Height (H)	2.0ft (0.62m)
Weight	4.3Klb (1.94mt)

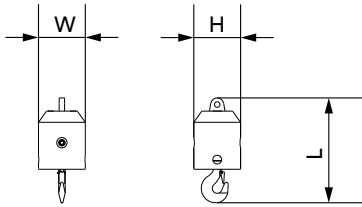


39 UST lifting hook

×1

Length (L)	6.2ft (1.88m)
Width (W)	3.0ft (0.91m)
Height (H)	1.5ft (0.46m)
Weight	2.6Klb (1.2mt)

Transportation Dimensions



15 UST ball hook

×1

Length (L)	3.1ft (0.95m)
Width (W)	1.4ft (0.43m)
Height (H)	1.4ft (0.43m)
Weight	1.0Klb (0.45mt)

Remarks:

1. The transport dimensions for the parts are for reference that do not draw to the scale. The dimensions listed above are designed values excluding packing.
2. Weight is design values. It maybe different due to manufacturing tolerances.