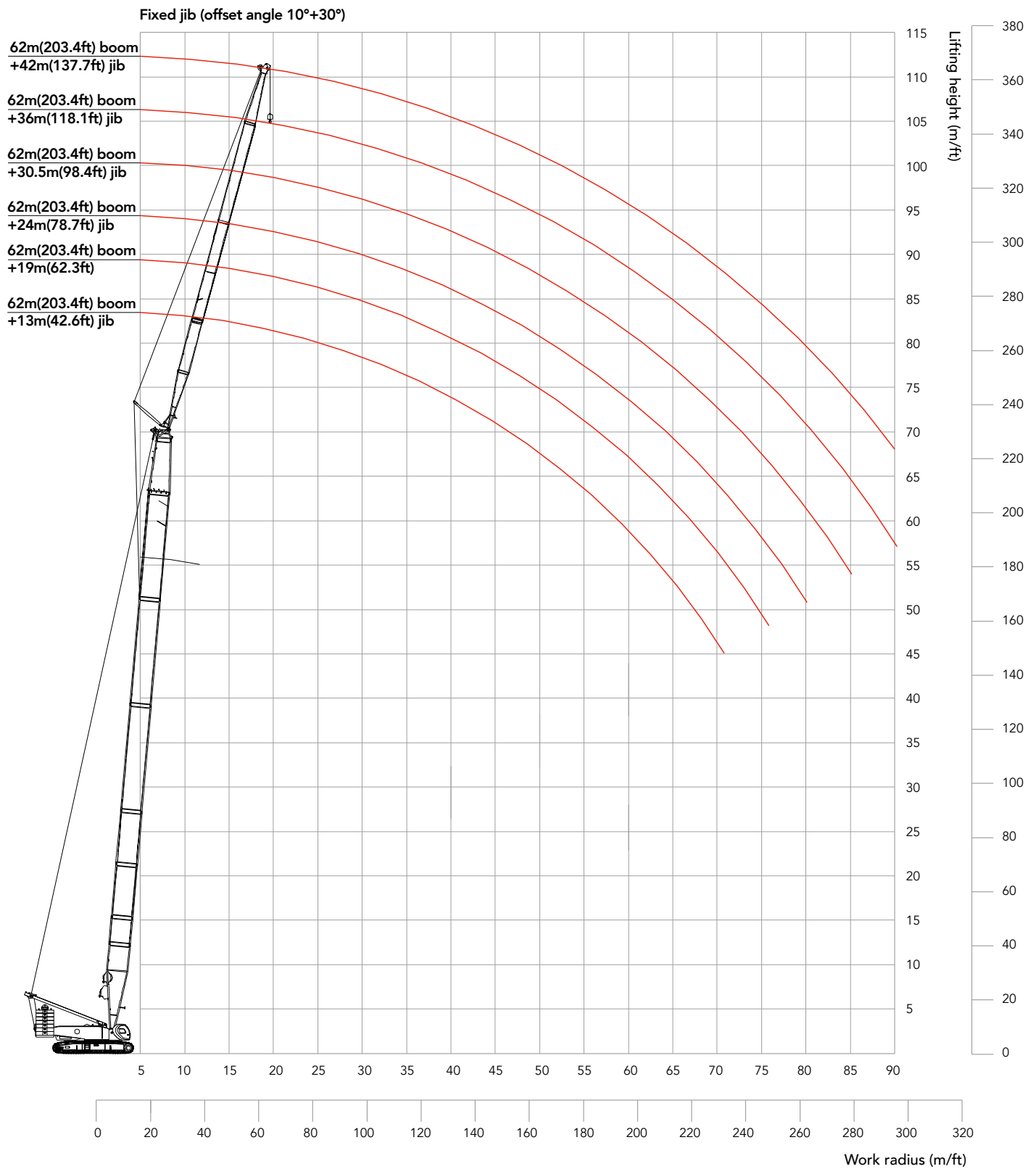


SCA2600A | WORKING RADIUS IN FJ CONFIGURATION



Specifications are subject to change without prior notification.

SCA2600A | LOAD CHART OF FJ CONFIGURATION

Fixed jib 42.7 ft													
Boom length	95.1ft		105ft		114.8ft		124.7ft		134.5ft		144.4ft		Boom length
Boom to jib angle	10°	30°	10°	30°	10°	30°	10°	30°	10°	30°	10°	30°	Boom to jib angle
30	141.5												30
35	138.2		139.3		140.7		140.5						35
40	129.5		133.5		137.0		135.5		138.4		141.3		40
45	119.0		122.9		126.6		125.1		128.1		131.6		45
50	110.0	59.1	113.9	59.7	117.6	60.6	116.7	60.0	119.8		120.5		50
55	102.1	56.6	106.0	57.2	109.7	58.1	109.4	57.8	110.7	58.3	109.3	59.0	55
60	95.1	54.1	99.1	54.9	102.4	55.8	102.1	55.6	100.6	56.4	98.6	57.0	60
65	89.2	51.9	93.0	52.9	94.7	53.8	93.0	53.6	91.4	54.4	89.6	55.1	65
70	84.0	50.0	87.2	51.1	87.1	51.9	85.2	51.9	83.7	52.7	82.1	53.4	70
75	79.0	48.3	80.4	49.4	79.8	50.3	78.3	50.3	76.9	51.1	75.3	51.8	75
80	73.6	46.6	74.0	47.7	74.7	48.8	74.7	48.8	70.9	49.7	70.1	50.3	80
85	67.5	45.3	71.3	46.4	75.3	47.3	78.8	47.5	65.4	48.4	68.2	49.0	85
90	65.2	43.9	68.8	45.0	69.7	46.1	73.2	46.1	66.1	47.0	66.2	47.8	90
95	63.1	42.7	64.6	43.8	66.1	44.9	67.5	44.9	63.3	45.8	64.1	46.7	95
100	61.1	41.6	60.5	42.7	63.0	43.8	63.2	43.8	60.0	44.7	61.2	45.6	100
105	59.3	40.6	58.7	41.7	58.5	42.8	60.9	42.8	60.5	43.7	56.7	44.5	105
110	55.2	39.8	56.0	40.9	55.7	41.7	56.7	42.0	56.2	42.8	54.8	43.7	110
115		39.0	52.7	40.0	53.0	40.8	52.8	41.1	52.4	41.9	53.0	42.8	115
120			49.2	39.2	50.0	40.1	49.4	40.3	49.5	41.1	50.7	42.0	120
125					46.7	39.5	46.6	39.7	47.9	40.3	47.2	41.2	125
130					43.6	38.9	43.5	39.0	44.8	39.6	44.0	40.5	130
135						38.4	41.6	38.4	41.9	39.1	41.2	39.8	135
140								37.9	39.2	38.6	38.6	38.8	140
145										37.8	36.1	37.2	145
150										35.3	33.7	34.8	150
155												32.5	155
160													160
165													165
170													170
175													175
180													180
185													185
190													190
195													195
200													200

Specifications are subject to change without prior notification. Refer to load chart.
Capacities are in Klb.

SCA2600A | LOAD CHART OF FJ CONFIGURATION

Fixed jib 42.7 ft													
Boom length	154.2ft		164ft		173.9ft		183.7ft		193.6ft		203.4ft		Boom length
Boom to jib angle	10°	30°	10°	30°	10°	30°	10°	30°	10°	30°	10°	30°	Boom to jib angle
30													30
35													35
40	140.4		140.6		129.2		129.0						40
45	132.1		129.8		125.9		123.8						45
50	119.4		116.9		114.7		112.5		110.4		108.2		50
55	107.2	60.5	105.1	60.9	103.1	61.5	101.1	61.9	99.3		97.3		55
60	96.8	58.6	95.0	59.0	93.2	59.7	91.3	60.1	89.8	60.5	87.9	60.8	60
65	88.1	56.6	86.3	57.3	84.7	58.0	83.0	58.4	81.5	58.8	79.9	59.3	65
70	80.7	55.1	79.0	55.8	77.5	56.3	79.2	56.9	77.8	57.3	79.3	57.8	70
75	76.0	53.6	74.4	54.2	73.1	54.8	74.3	55.3	73.0	55.9	75.9	56.3	75
80	73.5	52.1	71.9	52.8	69.9	53.4	69.1	53.9	68.3	54.5	70.5	55.0	80
85	71.1	50.8	69.6	51.5	64.5	52.1	66.6	52.8	67.7	53.2	67.9	53.9	85
90	69.1	49.4	66.4	50.3	62.9	50.9	64.5	51.6	66.5	52.2	67.8	52.7	90
95	65.2	48.3	63.0	49.1	60.9	49.7	62.4	50.4	64.6	51.1	64.8	51.6	95
100	61.3	47.2	59.2	48.0	59.5	48.6	60.3	49.3	61.7	50.0	60.1	50.6	100
105	59.5	46.1	55.2	47.0	60.0	47.6	58.4	48.3	57.3	48.9	55.8	49.6	105
110	55.1	45.3	55.8	45.9	55.9	46.6	54.3	47.5	53.4	47.9	51.9	48.6	110
115	51.3	44.4	53.3	45.0	52.2	45.7	50.7	46.5	49.8	47.0	48.3	47.7	115
120	48.4	43.6	49.6	44.2	48.7	44.9	47.3	45.6	46.4	46.2	44.9	46.5	120
125	46.8	42.7	46.1	43.4	45.4	44.1	44.3	44.9	43.2	45.2	41.9	44.6	125
130	43.7	41.9	42.9	42.7	42.4	43.4	41.3	43.4	40.4	42.7	39.1	41.5	130
135	40.8	41.2	40.1	41.1	39.5	41.2	38.7	40.7	37.8	40.1	36.5	38.8	135
140	38.1	39.6	37.5	38.9	36.8	38.5	36.2	37.8	35.4	37.5	34.1	36.2	140
145	35.6	37.0	35.0	36.3	34.3	35.9	33.7	35.2	33.0	35.0	31.7	33.7	145
150	33.5	34.6	32.6	33.9	32.1	33.5	31.3	32.8	30.8	32.6	29.5	31.5	150
155	31.3	32.4	30.5	31.7	30.0	31.3	29.1	30.6	28.8	30.4	27.5	29.3	155
160		30.2	28.5	29.6	28.0	29.2	27.1	28.5	26.8	28.3	25.5	27.2	160
165			26.5	27.6	26.1	27.2	25.2	26.5	24.8	26.3	23.7	25.3	165
170			24.7	25.6	24.2	25.3	23.3	24.7	23.1	24.2	22.0	23.6	170
175					22.5	23.5	21.8	22.8	21.4	22.5	20.5	21.9	175
180							20.3	21.2	19.8	20.9	19.0	20.3	180
185								19.7	18.4	19.4	17.5	18.6	185
190								18.0	17.1	18.0	16.2	17.1	190
195										16.5	14.8	15.7	195
200												14.3	200

Specifications are subject to change without prior notification. Refer to load chart.
Capacities are in Klb.

SCA2600A | LOAD CHART OF FJ CONFIGURATION

Fixed jib 100.1ft														
Boom length	295.1ft		310.5ft		114.8ft		124.7ft		134.5ft		144.4ft		Boom length	
	Boom to jib angle	10°	30°	10°	30°	10°	30°	10°	30°	10°	30°	10°		30°
50	72.6													50
55	67.2		68.9		69.8		67.2		66.6		68.5			55
60	61.0		63.0		64.9		64.6		64.9		66.9			60
65	55.7		57.6		59.6		60.9		61.7		63.7			65
70	51.8		53.2		55.3		56.7		57.7		59.8			70
75	47.9		49.4		51.4		52.6		54.0		55.9			75
80	44.4	30.3	46.2	30.6	47.9	30.8	48.9		50.6		52.4			80
85	41.5	29.2	43.2	29.4	44.5	29.9	46.2		47.5		49.1			85
90	39.0	28.2	40.7	28.4	42.1	28.8	43.5	28.3	45.0	28.5	46.2	28.7		90
95	36.7	27.2	38.3	27.5	39.8	27.8	41.1	27.4	42.3	27.7	43.8	27.9		95
100	34.6	26.2	36.1	26.6	37.5	26.8	38.8	26.5	39.9	26.8	41.6	27.1		100
105	32.9	25.4	34.2	25.6	35.4	26.0	36.7	25.8	37.9	26.0	39.5	26.5		105
110	31.1	24.6	32.4	24.9	33.7	25.3	34.8	25.0	36.1	25.3	37.7	25.7		110
115	29.6	23.7	30.8	24.2	32.2	24.5	33.1	24.1	34.5	24.7	36.0	24.9		115
120	28.2	22.9	29.3	23.5	30.7	23.8	31.6	23.3	33.0	24.0	34.3	24.2		120
125	26.7	22.5	28.0	22.9	29.2	23.4	30.2	22.5	31.5	23.1	32.8	23.5		125
130	25.6	21.8	26.9	22.2	28.1	22.7	29.1	21.8	30.2	22.4	31.6	22.7		130
135	25.1	21.2	25.7	21.7	26.9	22.1	27.8	21.1	29.0	21.7	30.2	22.0		135
140	24.5	20.7	24.9	21.2	25.8	21.6	26.6	20.4	27.9	20.9	28.9	21.3		140
145	23.6	20.2	24.7	20.6	24.7	21.1	25.5	19.7	26.7	20.2	27.8	20.6		145
150	22.8	19.7	23.9	20.2	23.7	20.6	24.7	19.1	25.7	19.7	26.8	19.9		150
155	22.0	19.2	23.2	19.7	22.9	20.1	23.8	18.7	24.8	19.0	25.9	19.6		155
160	21.4	18.8	22.5	19.2	22.0	19.6	22.9	18.2	23.9	18.5	24.8	19.1		160
165		18.4	21.7	18.9	21.2	19.3	22.1	17.5	23.1	18.2	23.5	18.6		165
170		18.1	20.9	18.5	20.6	19.0	21.3	17.2	22.4	17.7	22.2	18.2		170
175		17.8		18.2	19.8	18.7	20.7	17.1	22.4	17.3	21.8	17.8		175
180				17.9		18.3	20.0	16.8	21.7	17.1	21.6	17.4		180
185						18.1	19.1	16.5	20.5	16.9	21.1	17.1		185
190						17.9	18.5	16.3	19.3	16.5	20.0	16.8		190
195								16.2	19.0	16.4	18.8	16.6		195
200										16.2	17.7	16.4		200
205												16.3		205
210												16.1		210
215												16.1		215
220														220
225														225
230														230
235														235
240														240
245														245
250														250
255														255

Specifications are subject to change without prior notification. Refer to load chart.
Capacities are in Klb.

SCA2600A | LOAD CHART OF FJ CONFIGURATION

Fixed jib 100.1ft													
Boom length	154.2ft		164ft		173.9ft		183.7ft		193.6ft		203.4ft		Boom length
Boom to jib angle	10°	30°	10°	30°	10°	30°	10°	30°	10°	30°	10°	30°	Boom to jib angle
50													50
55	67.1		65.7										55
60	66.1		64.8		63.3		61.7		60.1		58.6		60
65	64.9		63.8		62.4		60.9		59.5		58.0		65
70	61.3		61.7		61.6		60.2		58.7		57.2		70
75	57.3		58.5		59.4		59.3		58.0		56.6		75
80	53.6		54.9		56.2		57.6		57.0		55.9		80
85	50.5		52.0		53.3		54.3		55.7		55.1		85
90	48.0	29.7	49.2	29.9	50.4	30.1	51.4		53.0		52.5		90
95	45.5	28.8	46.4	29.1	47.8	29.4	48.9	29.6	50.0	29.8	49.2	30.0	95
100	43.1	28.0	44.0	28.4	45.4	28.6	46.6	28.8	47.0	29.0	45.8	29.2	100
105	40.8	27.3	42.0	27.6	43.2	27.8	44.5	28.0	43.8	28.2	42.8	28.4	105
110	39.0	26.7	40.1	26.9	41.3	27.1	41.8	27.3	41.0	27.7	40.0	27.9	110
115	37.2	26.0	38.4	26.2	39.4	26.4	39.3	26.8	38.5	27.1	37.5	27.3	115
120	35.5	25.3	36.7	25.6	37.5	25.8	36.8	26.2	36.0	26.4	35.0	26.7	120
125	34.1	24.7	35.0	25.1	35.6	25.4	34.5	25.6	33.8	25.8	32.8	26.2	125
130	32.5	24.1	33.6	24.4	33.4	24.8	32.4	25.0	31.8	25.2	30.8	25.5	130
135	31.2	23.7	32.1	23.9	31.5	24.3	30.5	24.6	29.9	24.8	28.9	25.0	135
140	30.1	23.2	30.5	23.4	29.6	23.8	28.6	24.1	28.0	24.3	27.0	24.6	140
145	28.9	22.6	28.7	22.8	27.9	23.3	26.9	23.5	26.3	23.8	25.5	24.2	145
150	27.6	22.1	27.1	22.4	26.3	22.8	25.4	23.0	24.8	23.5	25.1	23.7	150
155	26.1	21.6	25.6	22.0	24.8	22.3	23.9	22.7	24.2	23.0	24.6	23.2	155
160	24.5	21.2	24.0	21.6	23.4	21.8	23.0	22.2	23.8	22.5	24.0	22.7	160
165	23.1	20.8	22.5	21.1	22.3	21.5	22.7	21.7	23.3	22.2	23.1	22.4	165
170	21.8	20.5	21.2	20.7	22.0	21.2	22.3	21.4	22.9	21.8	22.4	22.0	170
175	21.4	20.2	19.9	20.4	21.7	20.9	21.2	21.1	22.1	21.4	22.3	21.7	175
180	21.2	19.9	18.7	20.1	21.2	20.5	20.6	20.7	21.6	21.0	21.4	21.4	180
185	20.7	19.5	17.6	19.7	20.5	20.2	20.7	20.4	21.0	20.7	19.9	21.1	185
190	19.4	19.2	16.6	19.4	19.9	19.8	20.5	20.1	19.7	20.5	18.6	20.7	190
195	18.4	18.8	15.6	19.3	19.7	19.5	19.2	19.7	18.5	20.2	17.3	20.0	195
200	17.8	18.6	15.1	19.0	18.9	19.2	18.0	19.5	17.2	19.7	16.0	19.0	200
205	17.3	18.4	14.7	18.7	17.7	18.9	16.8	19.0	16.0	18.8	14.8	17.7	205
210	16.8	18.1	13.8	18.5	16.5	18.5	15.7	17.9	15.0	17.4	13.7	16.5	210
215		17.9	12.8	17.5	15.3	17.3	14.6	16.7	13.8	16.2	12.6	15.2	215
220		17.1		16.4	14.3	16.2	13.6	15.5	12.7	15.1	11.6	14.1	220
225				15.3		15.0	12.6	14.3	11.7	13.9	10.6	13.0	225
230						13.8		13.1	10.7	12.7	9.6	11.8	230
235						12.8		12.1	9.9	11.7	8.8	10.8	235
240								11.2	9.1	10.7	8.0	9.9	240
245										9.7	7.1	8.8	245
250												7.8	250
255												7.0	255

Specifications are subject to change without prior notification. Refer to load chart.
Capacities are in Klb.

SCA2600A | LOAD CHART OF FJ CONFIGURATION

Fixed jib 137.8 ft													
Boom length	95.1ft		105ft		114.8ft		124.7ft		134.5ft		144.4ft		Boom length
Boom to jib angle	10°	30°	10°	30°	10°	30°	10°	30°	10°	30°	10°	30°	Boom to jib angle
60	38.2		38.3		37.7		36.3						60
65	37.1		37.3		36.8		35.5						65
70	36.1		36.3		35.9		34.6		35.8		34.4		70
75	35.2		35.4		35.0		33.7		35.0		33.7		75
80	34.0		34.3		34.2		32.9		34.2		32.9		80
85	31.8		32.8		33.4		32.1		33.4		32.1		85
90	29.8		30.6		31.5		31.4		32.6		31.4		90
95	28.0		28.8		29.8		30.1		31.8		30.7		95
100	26.3		27.3		28.0		28.6		30.8		29.9		100
105	24.8	22.0	25.6	22.5	26.3	22.7	27.1	21.8	29.1	22.0	28.6	22.3	105
110	23.5	21.2	24.2	21.7	24.9	21.9	25.9	21.1	27.7	21.4	27.4	21.6	110
115	22.3	20.5	23.0	20.9	23.7	21.1	24.6	20.6	26.3	20.8	26.1	20.9	115
120	21.4	19.8	22.2	20.2	22.6	20.4	23.3	20.0	25.0	20.2	24.8	20.3	120
125	21.2	19.2	21.9	19.6	21.6	19.8	22.1	19.4	23.6	19.6	23.5	19.8	125
130	20.3	18.6	20.9	19.1	20.6	19.3	21.1	18.8	22.7	19.1	22.5	19.3	130
135	19.9	18.2	20.0	18.6	20.0	18.8	20.2	18.4	21.8	18.6	21.7	18.8	135
140	19.4	17.7	19.2	18.1	19.4	18.3	19.4	17.9	20.8	18.1	20.7	18.3	140
145	18.6	17.1	18.4	17.5	18.6	17.8	18.6	17.3	19.8	17.6	19.7	17.9	145
150	17.8	16.6	17.6	17.1	17.8	17.3	17.8	16.9	19.2	17.3	19.1	17.5	150
155	17.2	16.1	16.9	16.6	17.2	17.0	17.1	16.5	18.5	16.8	18.4	17.0	155
160	16.4	15.6	16.2	16.1	16.5	16.5	16.3	16.1	17.7	16.3	17.6	16.6	160
165	15.6	15.1	15.4	15.6	15.7	16.0	15.6	15.8	16.9	16.0	16.9	16.2	165
170	15.1	14.7	14.7	15.1	15.1	15.5	15.1	15.4	16.3	15.7	16.3	15.9	170
175	14.5	14.3	14.1	14.7	14.5	15.1	14.5	15.1	15.7	15.4	15.7	15.6	175
180	13.9	13.9	13.7	14.4	14.0	14.7	13.9	14.7	15.2	15.0	15.1	15.2	180
185	13.4	13.6	13.3	14.0	13.5	14.2	13.5	14.3	14.7	14.7	14.6	15.0	185
190	12.9	13.0	12.7	13.4	13.1	13.9	12.9	14.1	14.1	14.3	14.1	14.8	190
195	12.4	12.7	12.3	13.1	12.6	13.4	12.5	13.6	13.6	14.0	13.7	14.4	195
200		12.4	11.9	12.8	12.2	13.1	12.2	13.2	13.2	13.7	13.3	14.1	200
205		12.0		12.5	11.8	12.9	11.7	13.0	12.7	13.3	12.7	13.8	205
210		11.7		12.1	11.3	12.6	11.2	12.8	12.2	13.0	12.2	13.4	210
215				11.9		12.2	11.0	12.4	11.8	12.8	12.0	13.1	215
220				11.7		12.0		12.1	11.5	12.5	11.6	12.9	220
225						11.8		11.8	11.2	12.2	11.3	12.7	225
230								11.7		11.9	10.9	12.3	230
235								11.3		11.7	10.5	12.0	235
240										11.6		11.8	240
245												11.6	245
250													250
255													255
260													260
265													265
270													270
275													275
280													280
285													285

Specifications are subject to change without prior notification. Refer to load chart.
Capacities are in Klb.

SCA2600A | LOAD CHART OF FJ CONFIGURATION

Fixed jib 137.8 ft													
Boom length	154.2ft		164ft		173.9ft		183.7ft		193.6ft		203.4ft		Boom length
	10°	30°	10°	30°	10°	30°	10°	30°	10°	30°	10°	30°	
Boom to jib angle	10°	30°	10°	30°	10°	30°	10°	30°	10°	30°	10°	30°	Boom to jib angle
60													60
65													65
70	35.2		35.0		34.7		36.6						70
75	34.6		34.4		34.1		36.0		33.4		33.1		75
80	33.9		33.7		33.4		35.3		32.9		32.6		80
85	33.1		32.9		32.7		34.7		32.2		32.1		85
90	32.5		32.3		32.1		34.1		31.8		31.5		90
95	31.8		31.7		31.6		33.6		31.3		31.1		95
100	31.0		31.1		31.1		33.0		30.8		30.6		100
105	29.8	22.9	30.4		30.4		32.3		30.4		30.1		105
110	28.1	22.2	29.0		29.6		31.8		29.8		29.6		110
115	26.9	21.7	27.8	21.9	28.3	22.0	30.9	22.1	29.2	22.3	29.1	22.3	115
120	25.8	21.2	26.5	21.3	27.0	21.4	29.7	21.6	28.4	21.8	28.6	21.8	120
125	24.5	20.7	25.2	20.7	26.0	20.9	28.3	21.2	27.2	21.4	27.8	21.4	125
130	23.4	20.0	24.1	20.2	24.8	20.4	27.1	20.6	26.1	20.8	26.6	20.8	130
135	22.4	19.5	23.1	19.7	23.8	19.9	26.0	20.1	25.1	20.4	25.6	20.5	135
140	21.4	19.0	22.1	19.3	22.9	19.5	25.0	19.6	24.1	19.9	24.6	20.1	140
145	20.6	18.6	21.2	18.9	22.1	19.1	24.1	19.2	23.0	19.4	23.5	19.6	145
150	19.8	18.2	20.4	18.4	21.2	18.6	23.3	18.8	22.2	19.1	22.8	19.3	150
155	19.1	17.8	19.6	18.1	20.4	18.3	22.4	18.5	21.4	18.7	22.0	18.8	155
160	18.3	17.4	18.9	17.6	19.5	17.8	21.5	18.0	20.7	18.3	21.0	18.3	160
165	17.6	16.9	18.3	17.1	18.7	17.3	20.6	17.5	20.2	17.8	20.1	18.0	165
170	17.1	16.5	17.6	16.8	18.1	17.0	19.9	17.2	20.5	17.4	18.8	17.6	170
175	16.5	16.2	17.0	16.5	17.6	16.7	19.3	16.9	19.6	17.1	17.7	17.3	175
180	15.9	15.9	16.4	16.1	17.0	16.3	18.7	16.6	18.5	16.8	16.6	17.0	180
185	15.3	15.6	15.9	15.9	16.4	16.1	17.9	16.3	17.3	16.5	15.4	16.7	185
190	14.9	15.2	15.4	15.7	15.9	15.9	17.0	16.1	16.3	16.3	14.5	16.5	190
195	14.3	15.1	14.8	15.2	15.4	15.5	16.0	15.8	15.3	16.0	13.5	16.2	195
200	13.9	14.7	14.4	14.8	14.8	15.2	15.0	15.5	14.4	15.7	12.7	15.9	200
205	13.5	14.2	14.0	14.5	14.1	14.9	14.0	15.2	13.5	15.3	11.8	15.6	205
210	13.1	13.9	13.6	14.1	13.2	14.6	13.2	15.0	12.5	15.0	10.9	15.2	210
215	12.6	13.7	12.9	13.9	12.4	14.2	12.3	14.7	11.7	14.7	10.1	15.0	215
220	12.1	13.4	12.2	13.6	11.7	13.9	11.4	14.2	10.9	14.4	9.4	14.8	220
225	11.7	13.1	11.4	13.3	10.9	13.6	10.7	13.8	10.1	14.2	8.6	14.5	225
230	11.2	12.8	10.7	13.2	10.3	13.2	10.0	13.7	9.3	13.9	7.9	14.0	230
235	10.5	12.6	10.0	12.9	9.5	13.0	9.2	13.3	8.6	13.7	7.2	13.0	235
240	9.9	12.3	9.3	12.7	8.8	12.9	8.5	13.0	8.0	12.9	6.6	12.1	240
245		12.0	8.6	12.4	8.1	12.6	7.8	12.4	7.3	11.9	6.0	11.0	245
250		11.7		12.0	7.5	12.2	7.1	11.6	6.6	10.9	5.4	10.0	250
255		11.7		11.6	7.0	11.2	6.6	10.6	5.9	10.1	4.7	9.2	255
260				10.8		10.3	5.9	9.7	5.4	9.1	4.2	8.2	260
265				10.0		9.5		8.9	4.8	8.2	3.7	7.3	265
270						8.6		8.0	4.3	7.3	3.2	6.4	270
275						7.8		7.2	3.8	6.5	2.7	5.6	275
280								6.4		5.8		4.9	280
285										5.0		4.1	285

Specifications are subject to change without prior notification. Refer to load chart.
Capacities are in Klb.