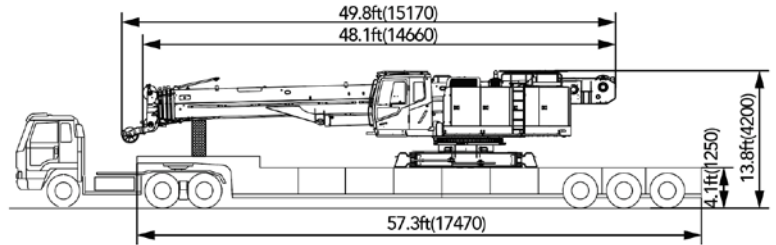
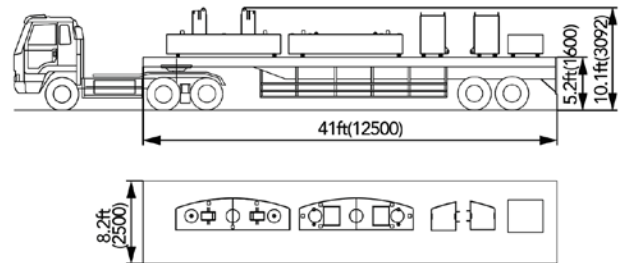


# SCA800TB | TRANSPORT PLAN

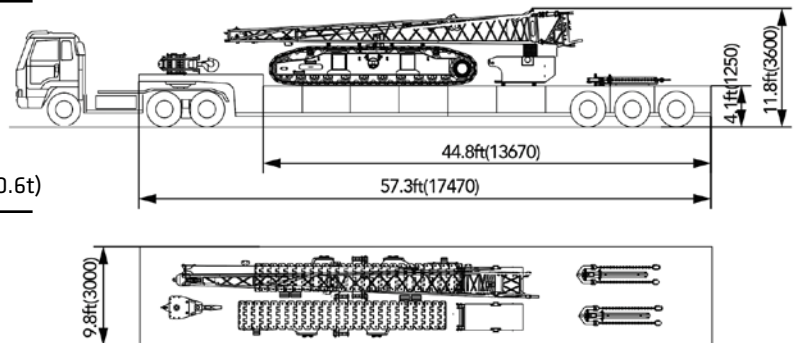
Trailer 1	
Part(s)	<ul style="list-style-type: none"> <li>• Basic Machine</li> </ul>
Weight	<ul style="list-style-type: none"> <li>• 70.5Klb (32t)</li> </ul>



Trailer 2	
Part(s)	<ul style="list-style-type: none"> <li>• Rear Counterweight 57.3Klb (26t)</li> <li>• Spare Parts box 1.1 Klb (0.5t)</li> </ul>
Weight	<ul style="list-style-type: none"> <li>• 58.4Klb (26.5t)</li> </ul>



Trailer 3	
Part(s)	<ul style="list-style-type: none"> <li>• Jib 2.2Klb (1t)</li> <li>• Carbody counterweight 13.2Klb (6t)</li> <li>• Left and right crawlers 39.7Klb (18t )</li> <li>• 39.7Klb(80t) hook 2.2Klb (1.0t)</li> <li>• 17.6Klb(8t) hook 0.35Klb (0.16t)</li> <li>• Rear counterweight self-assembly 1.3Klb (0.6t)</li> </ul>
Weight	<ul style="list-style-type: none"> <li>• 58.9Klb (26.7t)</li> </ul>



In the interest of continual equipment development, SANY America, Inc. reserves the right to change these specifications at any time without prior notification.