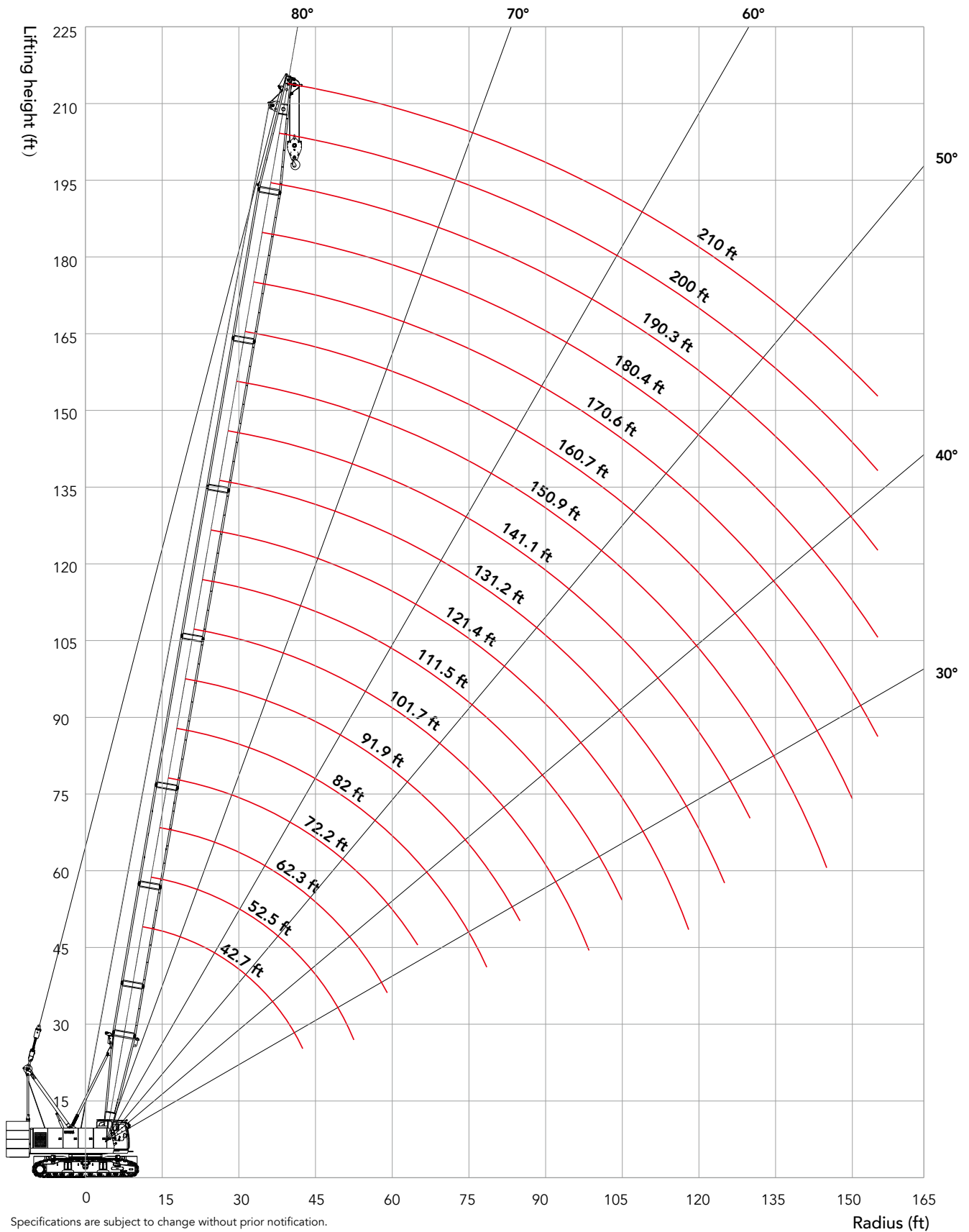


# SCA1000A | WORKING RADIUS IN H CONFIGURATION



# SCA1000A | LOAD CHART OF H CONFIGURATION

68.8Klb Rear Counterweight + 24.3Klb Carbody Counterweight

R/BL (ft)	42.7	52.5	62.3	72.2	82.0	91.9	101.7	111.5	121.4	131.2	141.1	150.9	160.7	170.6	180.4	190.3	200.0	210.0	R/BL (ft)
12.5	220.5																		12.5
13.0	202.5																		13.0
14.0	191.6																		14.0
15.0	182.7	177.9																	15.0
16.0	170.3	165.8																	16.0
17.0	160.5	157.6																	17.0
18.0	152.5	151.9	150.0																18.0
19.0	144.3	143.2	141.6																19.0
20.0	135.6	134.1	132.5	128.2															20.0
21.5	121.2	120.1	119.0	117.4	113.6														21.5
23.0	109.8	108.7	107.8	106.9	104.7	101.7													23.0
25.0	97.3	96.5	95.6	95.0	94.1	92.4	89.9												25.0
26.0	92.1	91.2	90.5	89.9	89.0	88.1	86.0	64.3											26.0
30.0	75.9	75.0	74.4	74.0	73.3	72.7	72.2	71.2	69.6	68.1									30.0
33.0	66.8	65.9	65.4	65.0	64.3	63.9	63.3	62.8	62.2	61.1	59.6								33.0
35.0	61.8	61.1	60.6	60.2	59.5	59.1	58.6	58.0	57.5	56.8	55.9								35.0
36.0	59.3	58.7	58.2	57.8	57.1	56.7	56.2	55.6	55.1	54.7	54.0	52.7	51.6						36.0
40.0	51.9	51.2	50.8	50.5	49.9	49.5	49.0	48.6	48.1	47.7	47.3	46.9	45.9	44.8					40.0
42.5	47.8	47.2	46.7	46.3	45.9	45.4	45.0	44.5	44.1	43.9	43.2	43.0	42.6	41.7	39.9	35.3			42.5
45.0		44.1	43.7	43.2	42.8	42.4	41.9	41.5	41.2	40.8	40.3	39.9	39.5	38.9	38.0	34.3			45.0
46.0		42.9	42.5	42.0	41.6	41.1	40.7	40.3	40.0	39.6	39.2	38.7	38.3	37.8	37.2	33.9	31.3		46.0
50.0		38.5	38.3	37.8	37.4	37.0	36.6	36.1	35.9	35.4	35.0	34.6	34.3	33.7	33.4	32.2	29.6	25.3	50.0
52.5		36.2	35.9	35.5	35.1	34.6	34.4	33.7	33.5	33.1	32.6	32.4	32.0	31.5	31.1	30.6	28.4	23.2	52.5
55.0			34.0	33.5	33.1	32.8	32.4	31.9	31.6	31.2	30.8	30.5	30.1	29.7	29.2	28.8	27.3	22.6	55.0
59.0			30.9	30.4	30.0	29.8	29.3	28.9	28.4	28.2	27.8	27.3	27.1	26.7	26.2	25.8	25.6	21.6	59.0
60.0				29.9	29.4	29.2	28.8	28.3	27.9	27.7	27.2	26.8	26.6	26.1	25.7	25.2	25.0	21.3	60.0
65.0				27.0	26.4	26.2	25.9	25.3	25.0	24.8	24.2	23.9	23.7	23.1	22.8	22.4	22.2	19.6	65.0
70.0					23.9	23.7	23.4	22.8	22.6	22.4	21.7	21.5	21.3	20.8	20.4	20.0	19.8	17.9	70.0
75.0					21.8	21.5	21.2	20.7	20.4	20.2	19.6	19.4	19.1	18.7	18.3	17.9	17.7	16.2	75.0
78.5					20.5	20.1	19.8	19.4	19.0	18.7	18.3	18.1	17.6	17.2	17.0	16.5	16.3	15.0	78.5
80.0						19.6	19.4	18.9	18.5	18.3	17.8	17.6	17.2	16.8	16.5	16.0	15.8	14.5	80.0
85.0						18.2	17.7	17.3	17.1	16.8	16.2	16.0	15.7	15.3	14.9	14.4	14.2	12.9	85.0
90.0							16.4	15.9	15.7	15.3	14.8	14.6	14.4	13.9	13.5	13.1	12.8	11.8	90.0
95.0								15.1	14.7	14.5	14.0	13.6	13.4	13.2	12.7	12.3	11.8	10.7	95.0
98.5								14.3	13.9	13.7	13.2	12.8	12.6	12.3	11.9	11.5	11.0	10.8	98.5
100.0									13.6	13.4	12.9	12.5	12.3	12.0	11.6	11.2	10.7	10.5	100.0
105.0									12.6	12.3	11.9	11.5	11.2	11.0	10.6	10.1	9.7	9.5	105.0
110.0										11.3	11.1	10.6	10.4	10.0	9.6	9.3	8.9	8.6	110.0
115.0										10.6	10.2	9.8	9.6	9.2	8.8	8.4	8.0	7.8	115.0
118.0										10.1	9.7	9.3	9.0	8.8	8.4	7.9	7.5	7.3	118.0
120.0										9.4	9.0	8.8	8.5	8.0	7.7	7.2	7.0	6.1	120.0
125.0										8.8	8.3	8.1	7.9	7.4	7.1	6.6	6.3	5.5	125.0
130.0											7.7	7.4	7.2	6.7	6.5	5.9	5.7	4.8	130.0
135.0												6.9	6.5	6.1	5.9	5.3	5.1	4.2	135.0
140.0												6.4	5.9	5.5	5.3	4.8	4.6	3.7	140.0
145.0												6.0	5.5	5.0	4.8	4.3	4.1	3.2	145.0
150.0													5.1	4.7	4.3	3.8	3.6	2.7	150.0
155.0														4.2	3.9	3.5	3.1	2.4	155.0

Specifications are subject to change without prior notification. Refer to load chart.  
Capacities are in Klb.