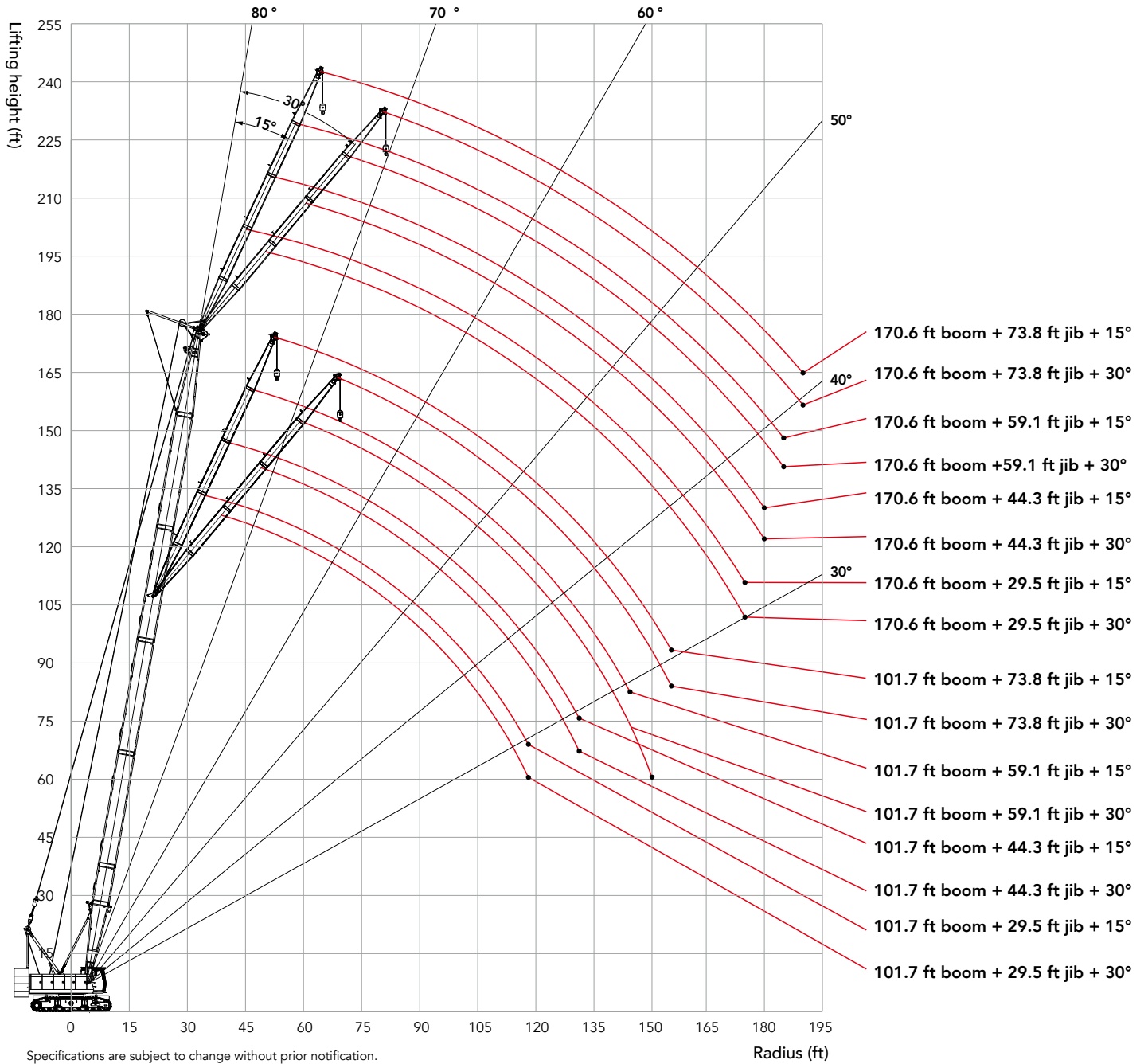


SCA1000A | WORKING RADIUS IN FJ CONFIGURATION



SCA1000A | LOAD CHART OF FJ CONFIGURATION

		31.2t Rear Counterweight + 11t Carbody Counterweight																	
		31(m)								34(m)									
R/BL (m)	Jib Length (m)	9		13.5		18		22.5		9		13.5		18		22.5		R/BL (m)	Jib Length (m)
Boom to Jib Angle		15°	30°	15°	30°	15°	30°	15°	30°	15°	30°	15°	30°	15°	30°	15°	30°	Boom to Jib Angle	
12		11																12	
13		11								11								13	
14		11	11	11						11	11							14	
15		11	11	11						11	11	11						15	
16		11	11	11	10.3	11				11	11	11		11				16	
18		11	11	11	9.7	10.5				11	11	11	9.7	10.5		7.2		18	
20		11	11	11	9.1	9.7	7.2	6.7		11	11	11	9.1	9.7	7.2	6.8		20	
22		10.4	10.5	10.5	8.7	9	6.8	6.3	5.7	10.2	10.4	10.3	8.7	9	6.8	6.4	5.8	22	
24		9.2	9.3	9.3	8.3	8.4	6.4	6	5.3	9	9.2	9.1	8.3	8.4	6.4	6.1	5.5	24	
26		8.2	8.3	8.3	7.9	7.9	6.1	5.7	5	8	8.2	8.1	7.9	7.9	6.1	5.8	5.2	26	
28		7.4	7.5	7.5	7.6	7.4	5.9	5.5	4.8	7.2	7.3	7.3	7.5	7.3	5.9	5.6	5	28	
30		6.7	6.8	6.7	6.9	6.8	5.6	5.2	4.6	6.5	6.6	6.6	6.8	6.6	5.6	5.3	4.8	30	
32		6	6.1	6.1	6.3	6.1	5.4	5	4.4	5.8	5.9	5.9	6.1	6	5.4	5.1	4.6	32	
34		5.5	5.5	5.6	5.7	5.6	5.2	4.8	4.3	5.3	5.4	5.4	5.5	5.4	5.2	4.9	4.4	34	
36		5	5	5.1	5.2	5.1	5.1	4.6	4.2	4.8	4.9	4.9	5	4.9	5.1	4.7	4.3	36	
38				4.7	4.7	4.7	4.8	4.5	4	4.4	4.4	4.5	4.6	4.5	4.7	4.5	4.1	38	
40				4.3	4.3	4.3	4.4	4.3	3.9			4.1	4.2	4.1	4.2	4.2	4	40	
42						3.9	4	4	3.8			3.7	3.8	3.8	3.9	3.9	3.9	42	
44						3.6	3.7	3.7	3.7				3.4	3.4	3.5	3.6	3.7	44	
46							3.3	3.5	3.5					3.1	3.2	3.4	3.4	46	
48								3.2	3.2						3.1	3.1	3.1	48	

		37(m)								40(m)									
R/BL (m)	Jib Length (m)	9		13.5		18		22.5		9		13.5		18		22.5		R/BL (m)	Jib Length (m)
Boom to Jib Angle		15°	30°	15°	30°	15°	30°	15°	30°	15°	30°	15°	30°	15°	30°	15°	30°	Boom to Jib Angle	
13		11																13	
14		11								11								14	
15		11	11	11						11								15	
16		11	11	11						11	11	11						16	
18		11	11	11	9.7	10.5				11	11	11		10.5				18	
20		11	11	11	9.1	9.7		6.9		11	11	11	9.1	9.7		6.9		20	
22		10	10.3	10.1	8.7	9	6.8	6.5		9.9	10.1	10	8.7	9	6.8	6.6		22	
24		8.9	9.1	9	8.3	8.4	6.4	6.2	5.6	8.7	8.9	8.8	8.3	8.4	6.4	6.3	5.6	24	
26		7.9	8	8	7.9	7.9	6.1	5.9	5.3	7.7	7.9	7.9	7.9	7.9	6.1	6	5.4	26	
28		7.1	7.2	7.2	7.4	7.2	5.9	5.7	5.1	6.9	7.1	7	7.3	7.1	5.9	5.8	5.2	28	
30		6.3	6.5	6.4	6.6	6.5	5.6	5.5	4.9	6.2	6.3	6.3	6.5	6.4	5.6	5.6	5	30	
32		5.7	5.8	5.8	6	5.9	5.4	5.2	4.7	5.6	5.7	5.7	5.9	5.7	5.4	5.3	4.8	32	
34		5.2	5.3	5.3	5.4	5.3	5.2	5	4.5	5	5.2	5.1	5.3	5.2	5.2	5.1	4.7	34	
36		4.7	4.8	4.8	4.9	4.8	5	4.8	4.3	4.6	4.7	4.6	4.8	4.7	4.9	4.7	4.5	36	
38		4.3	4.3	4.3	4.5	4.4	4.6	4.4	4.2	4.1	4.2	4.2	4.4	4.3	4.5	4.3	4.3	38	
40		3.9	3.9	4	4.1	4	4.1	4	4.1	3.7	3.8	3.8	3.9	3.9	4	3.9	4.1	40	
42		3.5	3.6	3.6	3.7	3.6	3.8	3.7	3.8	3.4	3.4	3.5	3.6	3.5	3.7	3.6	3.8	42	
44				3.3	3.3	3.3	3.4	3.4	3.5	3.1	3.1	3.2	3.2	3.2	3.3	3.3	3.5	44	
46				3	3	3	3.1	3.1	3.3			2.9	2.9	2.9	3	3	3.2	46	
48						2.7	2.8	2.8	3			2.6	2.6	2.6	2.7	2.7	2.9	48	
50						2.5	2.5	2.6	2.7					2.4	2.5	2.5	2.6	50	
52								2.3	2.4					2.1	2.2	2.2	2.3	52	
54															2	2	2.1	54	

Note: the capacity values in shade are determined by single line pull or boom strength.
 Specifications are subject to change without prior notification. Refer to load chart.
 Capacities are in Klb.

SCA1000A | LOAD CHART OF FJ CONFIGURATION

3.21t Rear Counterweight + 11t Carbody Counterweight

R/BL (m) Jib Length (m) Boom to Jib Angle	43(m)								46(m)								R/BL (m) Jib Length (m) Boom to Jib Angle	
	9		13.5		18		22.5		9		13.5		18		22.5			
	15°	30°	15°	30°	15°	30°	15°	30°	15°	30°	15°	30°	15°	30°	15°	30°		
14	11																	14
15	11								11									15
16	11	11	11						11									16
18	11	11	11		10				11	11	11							18
20	11	11	11	9.1	9.7			7	11	11	11	9.1	9.6					20
22	9.7	10	9.8	8.7	9	6.8	6.7		9.6	9.9	9.7	8.7	8.9		6.8			22
24	8.5	8.8	8.7	8.3	8.4	6.4	6.4	5.7	8.4	8.7	8.5	8.3	8.4	6.4	6.5	5.8		24
26	7.6	7.8	7.7	7.9	7.8	6.1	6.1	5.5	7.4	7.6	7.6	7.9	7.6	6.1	6.2	5.6		26
28	6.7	6.9	6.8	7.1	6.9	5.9	5.9	5.3	6.6	6.8	6.7	7	6.8	5.9	5.9	5.4		28
30	6	6.2	6.1	6.4	6.2	5.6	5.6	5.1	5.9	6.1	6	6.3	6.1	5.6	5.7	5.2		30
32	5.4	5.5	5.5	5.7	5.6	5.4	5.4	4.9	5.3	5.4	5.4	5.6	5.4	5.4	5.4	4.9		32
34	4.9	5	5	5.2	5	5.2	5	4.8	4.7	4.9	4.8	5	4.9	5.2	4.9	4.6		34
36	4.4	4.5	4.5	4.6	4.5	4.8	4.6	4.6	4.2	4.4	4.3	4.5	4.4	4.7	4.4	4.4		36
38	3.9	4	4	4.2	4.1	4.3	4.1	4.4	3.8	3.9	3.9	4.1	4	4.2	4	4.2		38
40	3.6	3.6	3.6	3.8	3.7	3.9	3.8	4	3.4	3.5	3.5	3.7	3.6	3.8	3.7	3.9		40
42	3.2	3.3	3.3	3.4	3.3	3.5	3.5	3.6	3.1	3.2	3.2	3.3	3.2	3.4	3.4	3.6		42
44	2.9	2.9	3	3.1	3	3.2	3.1	3.3	2.8	2.8	2.8	3	2.9	3.1	3	3.2		44
46	2.6	2.6	2.7	2.8	2.7	2.9	2.8	3	2.5	2.5	2.6	2.7	2.6	2.8	2.7	2.9		46
48			2.4	2.5	2.4	2.6	2.5	2.7	2.2	2.3	2.3	2.4	2.3	2.5	2.4	2.6		48
50			2.2	2.2	2.2	2.3	2.2	2.4		2	2	2.1	2.1	2.2	2.2	2.3		50
52				2	2	2.1	2	2.2			1.8	1.9	1.9	2	1.9	2.1		52
54					1.8	1.8	1.8	1.95			1.6	1.6	1.6	1.7	1.7	1.8		54
56					1.6	1.6	1.6	1.7					1.4	1.5	1.5	1.6		56
58							1.4	1.5					1.3	1.3	1.3	1.4		58

R/BL (m) Jib Length (m) Boom to Jib Angle	49(m)								52(m)								R/BL (m) Jib Length (m) Boom to Jib Angle	
	9		13.5		18		22.5		9		13.5		18		22.5			
	15°	30°	15°	30°	15°	30°	15°	30°	15°	30°	15°	30°	15°	30°	15°	30°		
15	11																	15
16	11								11									16
18	11	11	11						11	11	10.4							18
20	10.9	11	10.8	9.1	9				10.7	11	10.1		8.3					20
22	9.4	9.7	9.6	8.7	8.7		6.8		9.3	9.6	9.3	8.7	8.1		7			22
24	8.3	8.5	8.4	8.3	8	6.4	6.5		8.1	8.4	8.2	8.3	7.8	6.4	6.7			24
26	7.3	7.5	7.4	7.8	7.5	6.1	6.3	5.4	7.1	7.4	7.3	7.6	7.4	6.1	6.4	5.4		26
28	6.5	6.7	6.6	6.9	6.7	5.7	6.1	5.2	6.3	6.5	6.4	6.8	6.5	5.9	6.1	5.1		28
30	5.8	5.9	5.9	6.2	6	5.6	5.7	5	5.6	5.8	5.7	6	5.8	5.6	5.8	4.8		30
32	5.1	5.3	5.3	5.5	5.3	5.4	5.3	4.7	5	5.1	5.1	5.4	5.2	5.4	5.2	4.6		32
34	4.6	4.7	4.7	4.9	4.8	5.1	4.8	4.5	4.4	4.6	4.5	4.8	4.6	4.9	4.7	4.4		34
36	4.1	4.3	4.2	4.4	4.3	4.6	4.3	4.3	3.9	4.1	4	4.3	4.1	4.4	4.2	4.2		36
38	3.7	3.8	3.8	4	3.8	4.1	3.9	4.1	3.5	3.6	3.6	3.8	3.7	4	3.8	4		38
40	3.3	3.4	3.4	3.6	3.4	3.7	3.5	3.8	3.1	3.2	3.2	3.4	3.3	3.5	3.4	3.7		40
42	3	3.1	3	3.2	3.1	3.3	3.2	3.5	2.8	2.9	2.9	3	2.9	3.2	3.1	3.4		42
44	2.6	2.7	2.7	2.9	2.8	3	2.9	3.1	2.5	2.5	2.5	2.7	2.6	2.8	2.7	3		44
46	2.4	2.4	2.4	2.6	2.5	2.7	2.6	2.8	2.2	2.2	2.2	2.4	2.3	2.5	2.4	2.7		46
48	2.1	2.1	2.2	2.3	2.2	2.4	2.3	2.5	1.9	2	2	2.1	2	2.2	2.1	2.4		48
50	1.9	1.9	1.9	2	2	2.1	2.1	2.3	1.7	1.7	1.7	1.8	1.8	1.9	1.8	2.1		50
52	1.6	1.7	1.7	1.8	1.7	1.9	1.8	2	1.4	1.5	1.5	1.6	1.6	1.7	1.6	1.8		52
54			1.5	1.5	1.5	1.6	1.6	1.8	1.2	1.3	1.3	1.4	1.3	1.5	1.4	1.6		54
56			1.3	1.3	1.3	1.4	1.4	1.5			1.1	1.2	1.1	1.3	1.2	1.4		56
58					1.1	1.2	1.2	1.3					1	1	1	1.2		58

Note: the capacity values in shade are determined by single line pull or boom strength.
 Specifications are subject to change without prior notification. Refer to load chart.
 Capacities are in Klb.