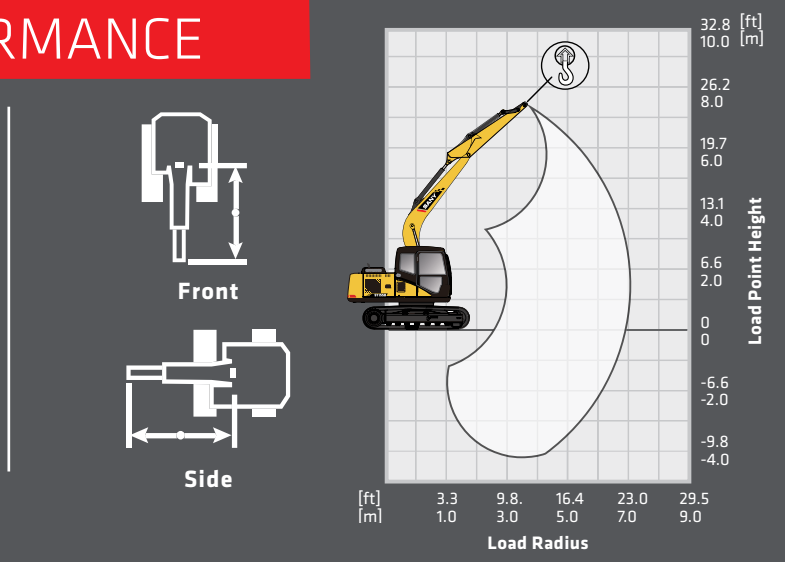


SY155U LIFTING PERFORMANCE

Standard 15' 1" (4 600 mm) Boom
 Standard 8' 2" (2 500 mm) Arm
 Standard 24" (600 mm) Track Shoes
 No Bucket

Ratings are based on ISO 10567:2007. Lift capacity does not exceed 75% of tipping load with the machine on firm, level ground or 87% of hydraulic lifting capacity.



BLADE DOWN														
LOAD RADIUS	6.6 ft 2.0 m		9.8 ft 3.0 m		13.4 ft 4.0 m		16.4 ft 5.0 m		19.7 ft 6.0 m		23.0 ft 7.0 m		MAX REACH	
LOAD POINT HEIGHT														
23 ft 7.0 m					7,392 lb* 3 353 kg*	7,392 lb* 3 353 kg*							5,591 lb* 2 536 kg*	5,591 lb* 2 536 kg*
19.7 ft 6.0 m					8,935 lb* 4 053 kg*	8,007 lb* 3 632 kg	7,297 lb* 3 310 kg*	5,924 lb 2 687 kg					4,885 lb* 2 216 kg*	4,885 lb* 2 216 kg*
16.4 ft 5.0 m					9,266 lb* 4 203 kg*	7,923 lb 3 594 kg	8,695 lb* 3 944 kg*	5,919 lb 2 685 kg	5,710 lb* 2 590 kg*	4,544 lb 2 061 kg			4,570 lb* 2 073 kg*	4,396 lb 1 994 kg
13.1 ft 4.0 m			10,441 lb* 4 736 kg*	10,441 lb* 4 736 kg*	10,236 lb* 4 643 kg*	7,688 lb 3 487 kg	9,140 lb* 4 146 kg*	5,794 lb 2 628 kg	8,426 lb* 3 822 kg*	4,515 lb 2 048 kg			4,445 lb* 2 016 kg*	3,889 lb 1 764 kg
9.8 ft 3.0 m			15,119 lb* 6 858 kg*	10,157 lb 4 607 kg	11,715 lb* 5 314 kg*	7,330 lb 3 325 kg	9,886 lb* 4 484 kg*	5,593 lb 2 537 kg	8,746 lb* 3 967 kg*	4,411 lb 2 001 kg			4,451 lb* 2 019 kg*	3,583 lb 1 625 kg
6.6 ft 2.0 m			18,453 lb* 8 370 kg*	9,343 lb 4 238 kg	13,296 lb* 6 031 kg*	6,923 lb 3 140 k	10,703 lb* 4 855 kg*	5,362 lb 2 432 kg	9,136 lb* 4 144 kg*	4,279 lb 1 941 kg	5,620 lb* 2 549 kg*	3,470 lb 1 574 kg	4,570 lb* 2 073 kg*	3,413 lb 1 548 kg
3.3 ft 1.0 m			14,663 lb* 6 651 kg*	8,772 lb 3 979 kg	14,434 lb* 6 547 kg*	6,570 lb 2 980 kg	11,341 lb* 5 144 kg*	5,146 lb 2 334 kg	9,431 lb* 4 278 kg*	4,147 lb 1 881 kg	6,058 lb* 2 748 kg*	3,406 lb 1 545 kg	4,813 lb* 2 183 kg*	3,351 lb 1 520 kg
0 ft 0 m			15,020 lb* 6 813 kg*	8,527 lb 3 868 kg	14,778 lb* 6 703 kg*	6,340 lb 2 876 kg	11,581 lb 5 253 kg	4,982 lb 2 260 kg	9,464 lb* 4 293 kg*	4,043 lb 1 834 kg			5,216 lb* 2 366 kg*	3,393 lb 1 539 kg
-3.3 ft -1.0 m	10,331 lb* 4 686 kg*	10,331 lb* 4 686 kg*	18,706 lb* 8 485 kg*	8,464 lb 3 839 kg	14,295 lb* 6 484 kg*	6,230 lb 2 826 kg	11,277 lb* 5 115 kg*	4,890 lb 2 218 kg	9,178 lb* 4 163 kg*	4,087 lb 1 854 kg			5,862 lb* 2 659 kg*	3,554 lb 1 612 kg
-6.6 ft -2.0 m	15,900 lb* 7 212 kg*	13,221 lb 5 997 kg	16,559 lb* 7 511 kg*	8,497 lb 3 854 kg	12,990 lb* 5 892 kg*	6,215 lb 2 819 kg	10,271 lb* 4 659 kg*	4,870 lb 2 209 kg	7,846 lb* 3 559 kg*	3,997 lb 1 813 kg			6,947 lb* 3 151 kg*	3,887 lb 1 763 kg
-9.8 ft -3.0 m	16,491 lb* 7 480 kg*	13,422 lb 6 088 kg	13,382 lb* 6 070 kg*	8,618 lb 3 909 kg	10,675 lb* 4 842 kg*	6,290 lb 2 853 kg	8,150 lb* 3 697 kg*	4,943 lb 2 242 kg					6,720 lb* 3 048 kg*	4,519 lb 2 050 kg
-13.1 ft -4.0 m			8,545 lb* 3 876 kg*	8,545 lb* 3 876 kg*	6,517 lb* 2 956 kg*	6,499 lb* 2 948 kg*							5,229 lb* 2 372 kg*	5,229 lb* 2 372 kg*

BLADE UP														
LOAD RADIUS	6.6 ft 2.0 m		9.8 ft 3.0 m		13.4 ft 4.0 m		16.4 ft 5.0 m		19.7 ft 6.0 m		23.0 ft 7.0 m		MAX REACH	
LOAD POINT HEIGHT														
23 ft 7.0 m					7,392 lb* 3 353 kg*	7,392 lb* 3 353 kg*							5,591 lb* 2 536 kg*	5,591 lb* 2 536 kg*
19.7 ft 6.0 m					8,935 lb* 4 053 kg*	8,007 lb* 3 632 kg	7,297 lb* 3 310 kg*	5,924 lb 2 687 kg					4,885 lb* 2 216 kg*	4,885 lb* 2 216 kg*
16.4 ft 5.0 m					9,266 lb* 4 203 kg*	7,923 lb 3 594 kg	7,919 lb 3 592 kg	5,919 lb 2 685 kg	5,710 lb* 2 590 kg*	4,544 lb 2 061 kg			4,570 lb* 2 073 kg*	4,396 lb 1 994 kg
13.1 ft 4.0 m			10,441 lb* 4 736 kg*	10,441 lb* 4 736 kg*	10,188 lb 4 621 kg	7,688 lb 3 487 kg	7,793 lb 3 535 kg	5,794 lb 2 628 kg	6,160 lb 2 803 kg	4,515 lb 2 048 kg			4,445 lb* 2 016 kg*	3,889 lb 1 764 kg
9.8 ft 3.0 m			13,488 lb 6 118 kg	10,157 lb 4 607 kg	9,830 lb 4 459 kg	7,330 lb 3 325 kg	7,593 lb 3 444 kg	5,593 lb 2 537 kg	6,076 lb 2 756 kg	4,411 lb 2 001 kg			4,451 lb* 2 019 kg*	3,583 lb 1 625 kg
6.6 ft 2.0 m			12,674 lb 5 749 kg	9,343 lb 4 238 kg	9,420 lb 4 273 kg	6,923 lb 3 140 kg	7,361 lb 3 339 kg	5,362 lb 2 432 kg	5,944 lb 2 696 kg	4,279 lb 1 941 kg	4,896 lb 2 221 kg	3,470 lb 1 574 kg	4,570 lb* 2 073 kg*	3,413 lb 1 548 kg
3.3 ft 1.0 m			12,103 lb 5 490 kg	8,772 lb 3 979 kg	9,070 lb 4 114 kg	6,570 lb 2 980 kg	7,145 lb 3 241 kg	5,146 lb 2 334 kg	5,814 lb 2 637 kg	4,147 lb 1 881 kg	4,833 lb 2 192 kg	3,406 lb 1 545 kg	4,762 lb 2 160 kg	3,351 lb 1 520 kg
0 ft 0 m			11,859 lb 5 379 kg	8,527 lb 3 868 kg	8,838 lb 4 009 kg	6,340 lb 2 876 kg	6,982 lb 3 167 kg	4,982 lb 2 260 kg	5,710 lb 2 590 kg	4,043 lb 1 834 kg			4,833 lb 2 192 kg	3,393 lb 1 539 kg
-3.3 ft -1.0 m	10,331 lb* 4 686 kg*	10,331 lb* 4 686 kg*	11,795 lb 5 350 kg	8,464 lb 3 839 kg	8,728 lb 3 959 kg	6,230 lb 2 826 kg	6,889 lb 3 125 kg	4,890 lb 2 218 kg	5,752 lb 2 609 kg	4,087 lb 1 854 kg			5,060 lb 2 295 kg	3,554 lb 1 612 kg
-6.6 ft -2.0 m	15,900 lb* 7 212 kg*	13,221 lb 5 997 kg	11,830 lb 5 366 kg	8,497 lb 3 853 kg	8,715 lb 3 953 kg	6,215 lb 2 819 kg	6,870 lb 3 116 kg	4,870 lb 2 209 kg	5,664 lb 2 569 kg	3,997 lb 1 813 kg			5,507 lb 2 498 kg	3,887 lb 1 763 kg
-9.8 ft -3.0 m	16,491 lb* 7 480 kg*	13,422 lb 6 088 kg	11,951 lb 5 421 kg	8,618 lb 3 909 kg	8,790 lb 3 987 kg	6,290 lb 2 853 kg	6,942 lb 3 149 kg	4,943 lb 2 242 kg					6,352 lb 2 881 kg	4,519 lb 2 050 kg
-13.1 ft -4.0 m			8,545 lb* 3 876 kg*	8,545 lb* 3 876 kg*	6,517 lb* 2 956 kg*	6,499 lb* 2 948 kg*							5,229 lb* 2 372 kg*	5,229 lb* 2 372 kg*

* Indicates load limited by hydraulic lifting capacity
 In the interest of continual equipment development, SANY America Inc. reserves the right to change these specifications at any time without prior notification.

SY155U

PRODUCT SPECIFICATIONS

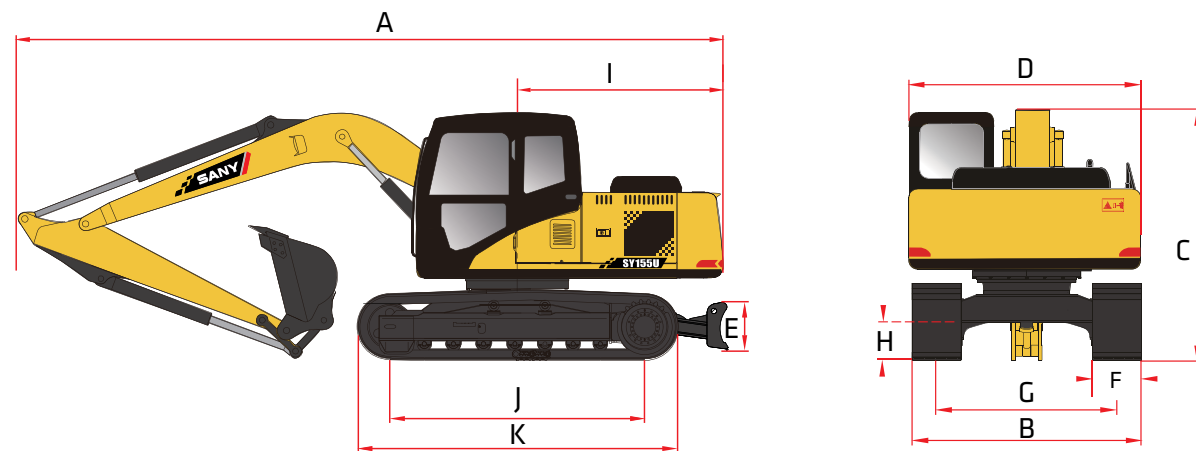


STANDARD FEATURES

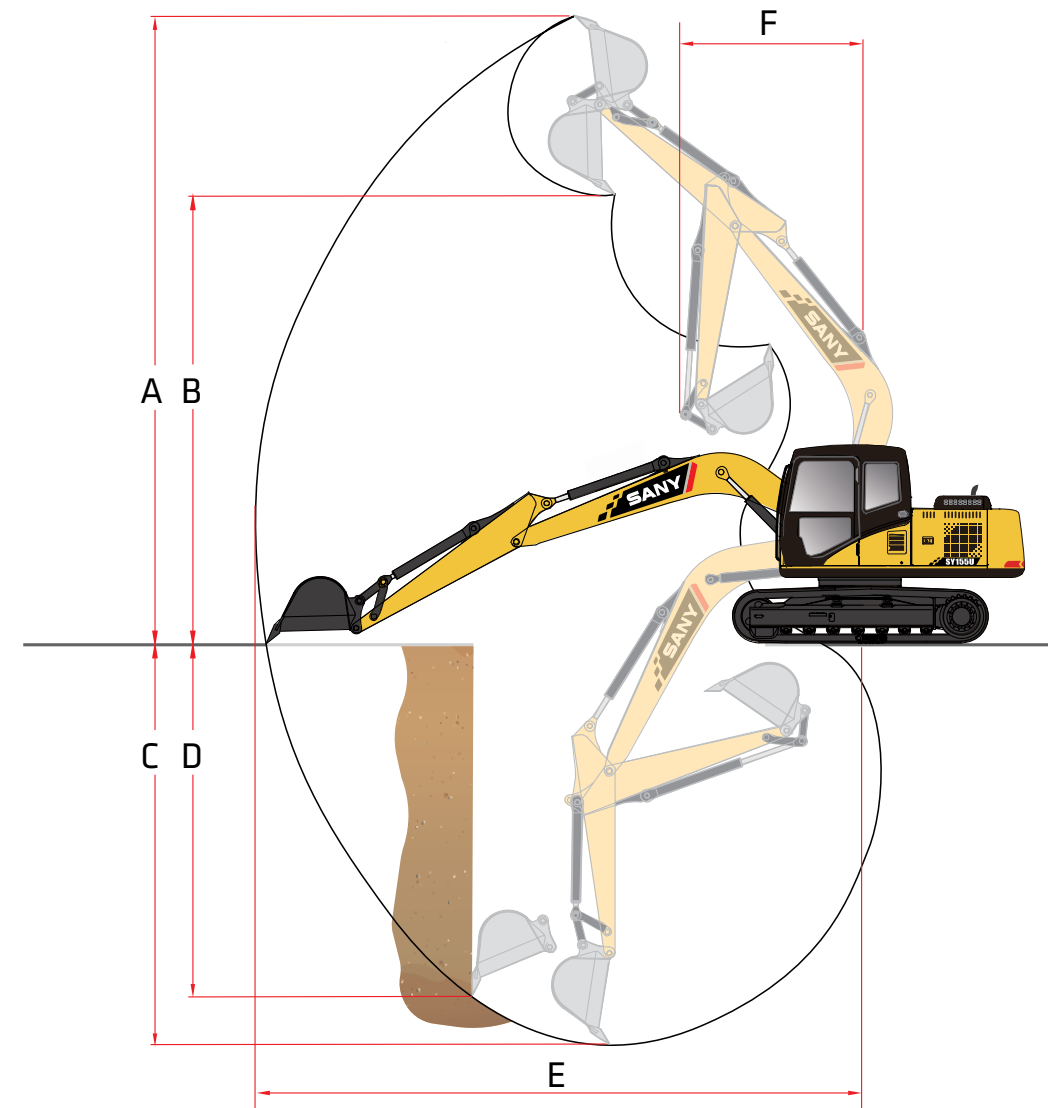
- Short Tail Swing with Fixed Boom
- Positive Flow Control Hydraulic System Provides Increased Efficiency
- Steel Track Comes Standard (Optional Bolt-on Pads for Surface Protection)
- Powerful Isuzu Engine

Gross Power	105 hp
Dig Depth	17' 11"
Operating Weight	35,274 lb
Bucket Breakout	23,155 lbf

DIMENSIONS



WORKING RANGE



Easy to Transport at a Maximum Legal Load Width of 102"

TECHNICAL SPECIFICATIONS

Operating Weight	35,274 lb	16 000 kg
Ground Pressure	5.9 psi	41.0 kPa
Engine	ISUZU AR-4J1XASC	
Displacement	183.0 in ³	3.0 L
Gross Power	105.0 HP	78.5 kW
Hydraulics	Positive Flow Control with Pilot Control	
Main Hydraulic Pump	Axial Piston – Variable Displacement	
Operating Flow (maximum)	66.6 gal/min	252.0 L/min
Operating Pressure (maximum)	4,975 psi	34.3 MPa
Travel Motor	Axial Piston with Park Brake	
Travel Pressure (maximum)	4,975 psi	34.3 MPa
Travel Speeds (maximum)	1.9/ 3.3 mph	3.1 / 5.3 km/hr
Travel Effort (maximum)	25,628 lbf	114.0 kN
Grade Capability (maximum)	35°	
Swing Motor	Axial Piston with Swing Brake	
Swing Pressure (maximum)	3,626 psi	25.0 MPa
Swing Speed (maximum)	12 RPM	
Undercarriage (standard)	Steel Track	
Track Shoe width (standard)	24"	600 mm
Track Rollers (per side)	7	
Carrier Rollers (per side)	1	

DIMENSIONS

Boom Length	15' 1"	4 600 mm
Stick (Arm) Length	8' 2"	2 500 mm
A Transport Length	26' 10"	8 178 mm
B Transport Width	8' 6"	2 590 mm
C Transport Height	9' 3"	2 820 mm
D Upper Structure Width	8' 2"	2 490 mm
E Blade Height	19"	490 mm
F Track Width (standard shoe)	24"	600 mm
G Track Gauge	6' 6"	1 990 mm
H Ground Clearance (minimum)	17"	425 mm
I Tail Swing Radius	4' 11"	1 500 mm
J Track Length on Ground	9' 7"	2 930 mm
K Track Length	12' 0"	3 665 mm

SERVICE REFILL CAPACITIES

Fuel Tank Capacity	55.5 gal	210.0 L
DEF Tank Capacity	5.3 gal	20.0 L
Hydraulic Tank Capacity	29.1 gal	110.0 L
Engine Oil Capacity	4.0 gal	15.0 L
Cooling System Capacity	4.2 gal	16.0 L

WORKING RANGE

Boom Length	15' 1"	4 600 mm
Stick (Arm) Length	8' 2"	2 500 mm
A Maximum Digging Height	30' 3"	9 218 mm
B Maximum Dumping Height	22' 2"	6 756 mm
C Maximum Digging Depth	17' 11"	5 468 mm
D Maximum Vertical Wall Digging Depth	12' 5"	3 796 mm
E Maximum Reach at Ground Level	27' 4"	8 338 mm
F Minimum Swing Radius	6' 10"	2 086 mm

DIGGING PERFORMANCE

Boom Length	15' 1"	4 600 mm
Stick (Arm) Length	8' 2"	2 500 mm
Bucket Breakout Force (ISO)	23,155 lbf	103.0 kN
Stick (Arm) Digging Force (ISO)	15,062 lbf	67.0 kN