

SCP130A
SCP160H4
SCP250H4
SCP320H4

Forklift Trucks



MORE THAN *Strength*

MORE THAN Heavy Duty

SANY heavy-duty forklift trucks have the strength, toughness and agility to carry the day on any job site. Four models with 13-32 metric ton hoist capacity, superior visibility and rugged construction are ideal for precast concrete, steel, lumber, 20-foot cargo containers or breakbulk cargo.



MORE THAN
MACHINES™



We've Got Your Back

To provide peace of mind and ensure maximum uptime, SANY backs all of its port equipment with a two-year, 4,000-hour warranty. That's our commitment to keep your fleet running at peak performance. Our network of local dealers will partner with you for routine maintenance and be there for warranty repairs. Trust SANY to keep you moving, year-round.



MORE THAN
MACHINES

sanyamerica.com

SANY | 318 COOPER CIRCLE | PEACHTREE CITY | GA 30269



MORE THAN
MACHINES™

The intelligent-control system monitors lifting conditions to **prevent rollovers**. The onboard **fire-suppression** system automatically engages extinguishers when flames are detected.

Safe Operation

1

Clean sight lines from the cab are enhanced by a rear-facing camera system and a sloping, sculpted counterweight. The operator has excellent forward view through the mast. The radar system allows the operator to view images that are behind the truck, as well as display the distance the object is from the rear of the truck.

Commanding Views

2

Smooth lifting of loads from 13 to 32 metric tons is aided by fuel-efficient, **load-sensing hydraulics** that dynamically match engine output to lifting demand. Lifting speeds up to 79 feet per minute ensure productivity, while the **tight turning radius** is ideal for work on crowded job sites.

Total Performance

3

The high-strength mast is anchored by massive tilt cylinders that control mast angle. High-strength steel and quality welds are evident all over the machine. Trusted, industry-leading components such as Tier 4 Cummins engines, Dana transmissions and Kessler drive axles mean all of the strength, performance and efficiency you need are built in.

4

Rugged Design



MORE THAN
MACHINES



MORE THAN MACHINES™

The hydraulically tilting cab and spring-enabled hood provide quick access to major components. A **large sight glass** makes it easy to check hydraulic fluid level and purity. The steer axle and mast rollers have **central grease points** for quick routine maintenance. The diesel exhaust fluid (DEF) tank is easily accessed.

Ease of Maintenance

5

On model SCP160H4 and above, piston pumps help extend the life of hydraulic hoses and components and house separate tanks for main hydraulics and brakes to prevent oil contamination, while the SCP130A offers gear pumps and a single hydraulic tank. Oversize hydraulic coolers are on all models, boosting performance and extending component life.

Reliability & Uptime

6

The **spacious, climate-controlled cab** features panoramic views, well-placed controls and displays that monitor the job site and operating/lifting conditions. **Intuitive controls** (levers or joystick) make it easy to operate the mast and carriage. The steering column is adjustable to suit operator preference. Operators will appreciate the fully adjustable Grammer seat. The displays deliver the rear-camera feed and **real-time data** on hydraulic pressure, engine RPM, speed, loads and fault codes.

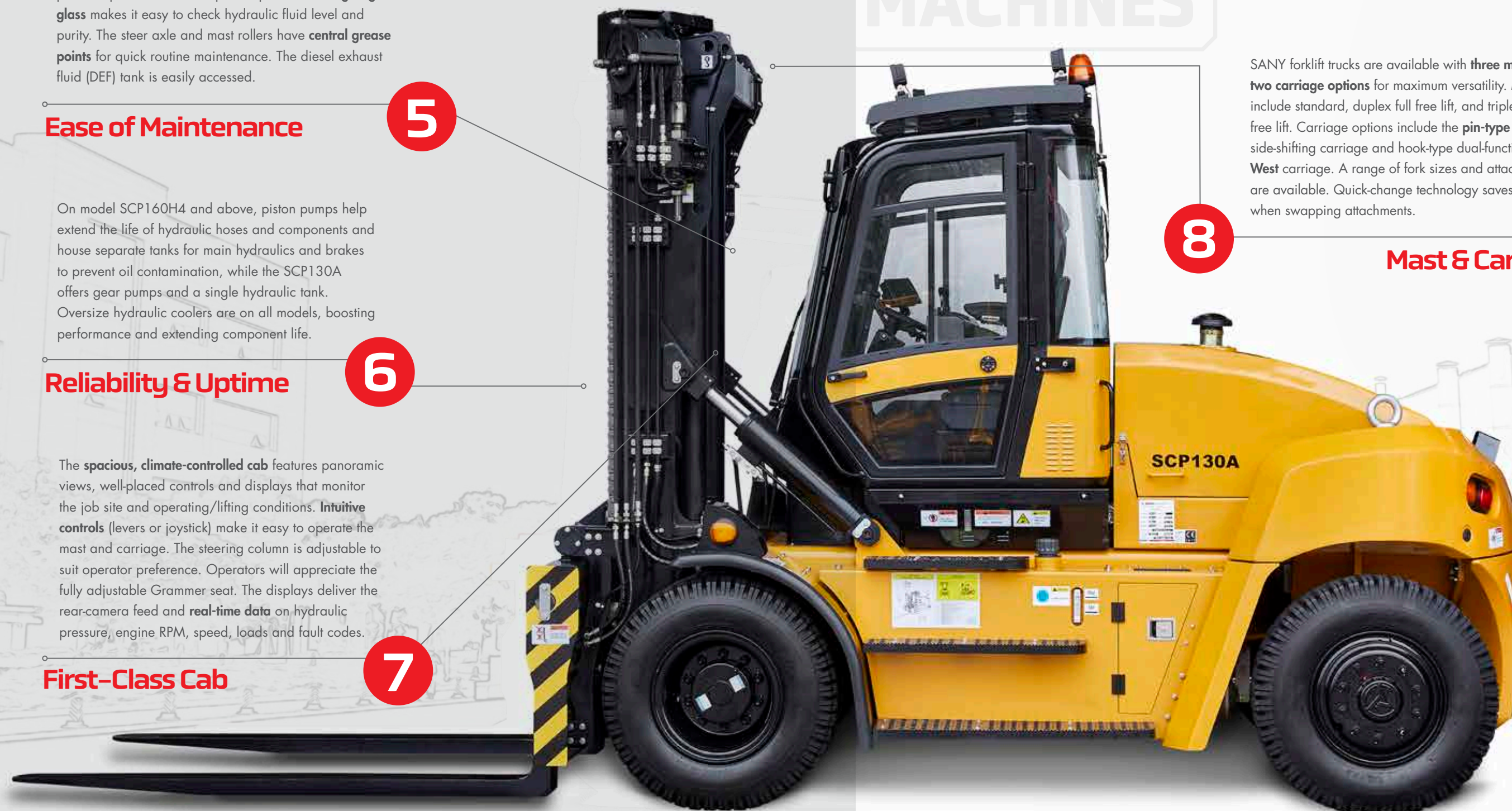
First-Class Cab

7

8

Mast & Carriage

SANY forklift trucks are available with **three mast** and **two carriage options** for maximum versatility. Mast types include standard, duplex full free lift, and triplex full free lift. Carriage options include the **pin-type apron-style** side-shifting carriage and hook-type dual-function **Terminal West** carriage. A range of fork sizes and attachments are available. Quick-change technology saves time when swapping attachments.



MORE THAN MACHINES

MORE THAN
Tech



Model SCP130A | SERIES TECHNICAL SPECIFICATIONS

Table with 12 columns: GENERAL (LOAD, WHEEL BASE, TANK CAPACITY), WEIGHTS (TOTAL TRUCK, AXLE LOADING), WHEELS (PNEUMATIC). Rows include Rated Capacity, Center, Distance, Hydraulic Main, Fuel, Without Load, With Load Front/Rear, Without Load Front/Rear, Drive, Steer.

Table with 14 columns: DIMENSIONS (MAST, OVERALL, FORK, CARRIAGE, FORK SPREAD). Rows include Tilt, Height, FreeLift, Height Extended, Cab Height, Length, Length to Load Face, Width Drive Tires, Thickness, Width, Length, Width, In-In Minimum, Out-Out Maximum.

Table with 12 columns: DIMENSIONS (GROUND CLEARANCE, AISLE WIDTH, TURNING RADIUS), PERFORMANCE T4 (SPEED, DRAWBAR, GRADEABILITY). Rows include Under Mast with Load, Center Wheelbase, Load Length Minimum, Outside, Travel, Lifting, Lowering, Pull-Max, With Load, Without Load.

Table with 10 columns: POWERTRAIN T4 (ENGINE, ALTERNATOR, DRIVE AXLE, TRANSMISSION). Rows include Type, Output, Governed Speed, Cylinders, Turbocharger, Amps, Drive Axle, Transmission.

Table with 10 columns: POWERTRAIN T4 (GEARS, BATTERY, BRAKES, TANK CAPACITY), MAST (TYPE, FORK, *OALH, *EXTENDED, *FREELIFT). Rows include FWD, REV, Capacity, Parking, DEF, Height, *Maximum, Duplex w/o Freelif.

* All imperial numbers have been rounded to the nearest whole number.

Attachment Options Models SCP130A | SCP160H4 SCP250H4 | SCP320H4

Forks



Rated Capacity: 10t, 16t, 18t, 25t, 28t, 30t, 32t, 35t, 46t

Application: Large tonnage cargo, bulk cargo

Clamp



Rated Capacity: 10t, 16t, 18t, 25t, 28t, 30t, 32t, 35t, 46t

Application: Timber

Coil Ram



Rated Capacity: 10t, 16t, 18t, 25t, 28t, 30t, 32t, 35t, 46t

Application: Rolled cargo such as steel coil, wire, paper, etc.

Container Spreader



Rated Capacity: 9t Application: ISO 20'/40' containers

Truck Chassis Handler



Rated Capacity: 4.5t Application: Container chassis

PC Prefabrication Unit Attachment



Rated Capacity: 16t Application: PC prefabrication unit

Main frame color for all attachments: Engineering black

Model SCP160H4 | SERIES TECHNICAL SPECIFICATIONS

Table with 12 columns: GENERAL (LOAD, WHEEL BASE, TANK CAPACITY), WEIGHTS (TOTAL TRUCK, AXLE LOADING), WHEELS (PNEUMATIC). Rows include Rated Capacity, Center, Distance, Hydraulic Main/Brake, Fuel, Without Load, With Load Front/Rear, Without Load Front/Rear, Drive, Steer.

Table with 14 columns: DIMENSIONS (MAST, OVERALL, FORK, CARRIAGE, FORK SPREAD). Rows include Tilt, Height, FreeLift, Height Extended, Cab Height, Length, Length to Load Face, Width Drive Tires, Thickness, Width, Length, Width, In-In Minimum, Out-Out Maximum.

Table with 12 columns: DIMENSIONS (GROUND CLEARANCE, AISLE WIDTH, TURNING RADIUS), PERFORMANCE T4 (SPEED, DRAWBAR, GRADEABILITY). Rows include Under Mast with Load, Center Wheelbase, Load Length Minimum, Outside, Travel, Lifting, Lowering, Pull-Max, With Load, Without Load.

Table with 10 columns: POWERTRAIN T4 (ENGINE, ALTERNATOR, DRIVE AXLE, TRANSMISSION). Rows include Type, Output, Governed Speed, Cylinders, Turbocharger, Amps, Drive Axle, Transmission.

Table with 10 columns: POWERTRAIN T4 (GEARS, BATTERY, BRAKES, TANK CAPACITY), MAST (TYPE, FORK, *OALH, *EXTENDED, *FREELIFT). Rows include FWD, REV, Capacity, Parking, DEF, Height, *Maximum, Duplex w/o Freelif.

MORE THAN MACHINES

MORE THAN

Tech



Model SCP250H4 | SERIES TECHNICAL SPECIFICATIONS

GENERAL							WEIGHTS					WHEELS		
LOAD			WHEEL BASE	TANK CAPACITY			TOTAL TRUCK	AXLE LOADING				PNEUMATIC		
RATED CAPACITY	CENTER	DISTANCE		HYDRAULIC		FUEL		WITHOUT LOAD	WITH LOAD		WITHOUT LOAD		DRIVE	STEER
				MAIN	BRAKE				FRONT	REAR	FRONT	REAR		
55,116 lb	48 in	44.72 in	169 in	100 gal	39.6 gal	114 gal	81,350 lb	124,341 lb	12,125 lb	40,565 lb	40,786 lb	14 x 24 24PR	14 x 24 24PR	
25 000 kg	1 220 mm	1 136 mm	4 300 mm	380 L	150 L	430 L	36 900 kg	56 400 kg	5 500 kg	18 400 kg	18 500 kg			

DIMENSIONS													
MAST				OVERALL				FORK			CARRIAGE	FORK SPREAD	
TILT	HEIGHT	FREELIFT	HEIGHT	CAB	LENGTH	LENGTH TO	WIDTH	THICKNESS	WIDTH	LENGTH	WIDTH	IN-IN	OUT-OUT
FWD (a)	LOWERED	TOP OF FORK	EXTENDED	HEIGHT		LOAD FACE	DRIVE TIRES					MINIMUM	MAXIMUM
5°	156 in	0 in	232 in	141.8 in	350 in	253 in	122 in	4.33 in	9.8 in	94 in	122 in	27.5 in	91 in
10°	3 950 mm	0 mm	5 710 mm	3 603 mm	8 880 mm	6 430 mm	3 100 mm	110 mm	250 mm	2 400 mm	3 100 mm	700 mm	2 310 mm

DIMENSIONS					PERFORMANCE T4							
GROUND CLEARANCE		AISLE WIDTH	TURNING RADIUS	SPEED						DRAWBAR	GRADEABILITY	
UNDER MAST WITH LOAD	CENTER WHEELBASE	LOAD LENGTH MINIMUM	OUTSIDE	TRAVEL		LIFTING		LOWERING		PULL-MAX	@ 1 MPH (1.6 KM/H)	
				WITH LOAD	WITHOUT LOAD	WITH LOAD	WITHOUT LOAD	WITH LOAD	WITHOUT LOAD		WITH LOAD	WITHOUT LOAD
11.8 in	12.6 in	347 in	201 in	16 mph	18 mph	49 ft/min	59 ft/min	79 ft/min	79 ft/min	39,550 lbf	29%	59%
300 mm	320 mm	8 810 mm	5 100 mm	26 km/h	30 km/h	0.25 m/s	0.3 m/s	0.4 m/s	0.4 m/s	176 kN		

POWERTRAIN T4									
ENGINE							ALTERNATOR	DRIVE AXLE	TRANSMISSION
TYPE	OUTPUT		GOVERNED SPEED	CYLINDERS		TURBOCHARGER	AMPS		
	RATED	PEAK		NUMBER	DISP				
Diesel	225 hp	230 hp	2,200 rpm	6	6.7 L	Water-cooled variable geometry	24 V	Kessler D-91	HR32334
Cummins	168 kW	172 kW					95 A		

POWERTRAIN T4						MAST				
GEARS		BATTERY	BRAKES		TANK CAPACITY	TYPE	FORK	*OALH	*EXTENDED	*FREELIFT
FWD	REV	CAPACITY		PARKING	DEF	Duplex w/o Freelift	HEIGHT		HEIGHT	
							*MAXIMUM			
3	3	2 x12 V 165 Ah CCA	Wet disc	Dry disc	5 gal		118 in 3 000 mm	136 in 3 460 mm	193 in 4 905 mm	-
					137 in 3 500 mm		146 in 3 710 mm	213 in 5 405 mm	-	
					157 in 4 000 mm		156 in 3 960 mm	232 in 5 905 mm	-	
					177 in 4 500 mm		166 in 4 210 mm	252 in 6 405 mm	-	
					196 in 5 000 mm		176 in 4 460 mm	272 in 6 905 mm	-	
					216 in 5 500 mm		185 in 4 710 mm	292 in 7 405 mm	-	
					236 in 6 000 mm		195 in 4 960 mm	311 in 7 905 mm	-	
					256 in 6 500 mm		205 in 5 210 mm	331 in 8 405 mm	-	
					275 in 7 000 mm	215 in 5 460 mm	351 in 8 905 mm	-		

* All imperial numbers have been rounded to the nearest whole number.

Attachment Options

Forks



Rated Capacity: 10t, 16t, 18t, 25t, 28t, 30t, 32t, 35t, 46t

Application: Large tonnage cargo, bulk cargo

Clamp



Rated Capacity: 10t, 16t, 18t, 25t, 28t, 30t, 32t, 35t, 46t

Application: Timber

Coil Ram



Rated Capacity: 10t, 16t, 18t, 25t, 28t, 30t, 32t, 35t, 46t

Application: Rolled cargo such as steel coil, wire, paper, etc.

Models SCP130A | SCP160H4 SCP250H4 | SCP320H4

Container Spreader



Rated Capacity: 9t

Application: ISO 20'/40' containers

Truck Chassis Handler



Rated Capacity: 4.5t

Application: Container chassis

PC Prefabrication Unit Attachment



Rated Capacity: 16t

Application: PC prefabrication unit

Main frame color for all attachments: Engineering black

Model SCP320H4 | SERIES TECHNICAL SPECIFICATIONS

GENERAL							WEIGHTS					WHEELS	
LOAD			WHEEL BASE	TANK CAPACITY			TOTAL TRUCK	AXLE LOADING				PNEUMATIC	
RATED CAPACITY	CENTER	DISTANCE		HYDRAULIC		FUEL		WITHOUT LOAD	WITH LOAD		WITHOUT LOAD		DRIVE
				MAIN	BRAKE		FRONT		REAR	FRONT	REAR		
70,548 lb	48 in	48.4 in	189 in	105 gal	26 gal	105 gal	99,649 lb	166,008 lb	10,803 lb	51,147 lb	4,850 lb	16 x 25 PR	16 x 25 PR
32 000 kg	1 220 mm	1 230 mm	4 800 mm	400 L	100 L	400 L	45 200 kg	75 300 kg	4 900 kg	23 200 kg	2 200 kg		

DIMENSIONS													
MAST				OVERALL				FORK			CARRIAGE	FORK SPREAD	
TILT	HEIGHT	FREELIFT	HEIGHT	CAB	LENGTH	LENGTH TO	WIDTH	THICKNESS	WIDTH	LENGTH	WIDTH	IN-IN	OUT-OUT
FWD (a)	LOWERED	TOP OF FORK	EXTENDED	HEIGHT		LOAD FACE	DRIVE TIRES					MINIMUM	MAXIMUM
5°	173 in	0 in	250 in	136.1 in	347 in	279 in	139 in	4.92 in	11.81 in	96 in	129.9 in	36.2 in	112.2 in
10°	4 400 mm	0 mm	6 345 mm	3 457 mm	9 528 mm	7 090 mm	3 520 mm	125 mm	300 mm	2 440 mm	3 300 mm	920 mm	2 850 mm

DIMENSIONS					PERFORMANCE T4							
GROUND CLEARANCE		AISLE WIDTH	TURNING RADIUS	SPEED						DRAWBAR	GRADEABILITY	
UNDER MAST WITH LOAD	CENTER WHEELBASE	LOAD LENGTH MINIMUM	OUTSIDE	TRAVEL		LIFTING		LOWERING		PULL-MAX	@ 1 MPH (1.6 KM/H)	
				WITH LOAD	WITHOUT LOAD	WITH LOAD	WITHOUT LOAD	WITH LOAD	WITHOUT LOAD		WITH LOAD	WITHOUT LOAD
13.8 in	11.81 in	327 in	260 in	15.5 mph	17 mph	49 ft/min	59 ft/min	79 ft/min	79 ft/min	39,550 lbf	26%	54%
350 mm	300 mm	9 458 mm	6 600 mm	25 km/h	28 km/h	0.25 m/s	0.3 m/s	0.4 m/s	0.4 m/s	176 kN		

POWERTRAIN T4									
ENGINE							ALTERNATOR	DRIVE AXLE	TRANSMISSION
TYPE	OUTPUT		GOVERNED SPEED	CYLINDERS		TURBOCHARGER	AMPS		
	RATED	PEAK		NUMBER	DISP				
Diesel	260 hp	270 hp	2,200 rpm	6	6.7 L	Water-cooled variable geometry	24 V	Kessler D-91	HR32334
Cummins	194 kW	201 kW					95 A		

POWERTRAIN T4						MAST				
GEARS		BATTERY	BRAKES		TANK CAPACITY	TYPE	FORK	*OALH	*EXTENDED	*FREELIFT
FWD	REV	CAPACITY		PARKING	DEF	Duplex w/o Freelift	HEIGHT		HEIGHT	
							*MAXIMUM			
3	3	2 x12 V 165 Ah CCA	Wet disc	Dry disc	5 gal		157 in 4 000 mm	172 in 4 360 mm	248 in 6 305 mm	
							177 in 4 500 mm	182 in 4 610 mm	268 in 6 805 mm	
							196 in 5 000 mm	192 in 4 860 mm	288 in 7 305 mm	
							216 in 5 500 mm	201 in 5 110 mm	308 in 7 805 mm	
							236 in 6 000 mm	211 in 5 360 mm	327 in 8 305 mm	
							256 in 6 500 mm	221 in 5 610 mm	347 in 8 805 mm	
					19 L		275 in 7 000 mm	231 in 5 860 mm	367 in 9 305 mm	

MORE THAN
MACHINES



318 COOPER CIRCLE
PEACHTREE CITY | GA 30269
| T | 678.251.2810
| F | 770.632.7820

sanyamerica.com