

The SANY logo is a red rectangle with the word "SANY" in white, bold, sans-serif capital letters.

SANY

CONTAINER HANDLERS

A yellow SANY container handler is shown in a port setting, lifting a yellow container. The handler has a black mast and a yellow body with "SANY" written on it. In the background, there are stacks of red, white, and blue shipping containers. The sky is clear and blue.

**FULLY LOADED
IS THE NEW
STANDARD**

**Easy to Operate,
Easy to Service**

**Designed for
Safety and Reliability**

**Backed by a Standard
3-Year/6,000-Hour
Warranty**



**WHY SANY
CONTAINER HANDLERS?**

THE ULTIMATE IN PORT PERFORMANCE AND SAFETY

When every minute and square foot counts, SANY's container handlers and reach stackers get the job done quickly and safely. Each machine is designed to have a tight turning radius for work in confined environments. They are engineered to lift and lower, stack and maneuver over the course of single, double, and multiple shifts. These workhorses are not afraid of the 24/7/365. Operators appreciate SANY's precision, speed and agility. It's a competitive advantage, giving them the power to make every shift a record for safety and productivity. No matter how challenging the configuration of the yard or the complexity of the load, SANY has the equipment to handle the job. All SANY container handlers are backed by the industry's strongest warranty of 3 years / 6,000 hours.

**INDUSTRY'S
STRONGEST
STANDARD
WARRANTY**

**3-YEAR
6,000 HOURS**



PROUDLY MADE FOR AMERICA

EMPTY CONTAINER HANDLERS

SDCY90K6H4 | SDCY90K7H4 | SDCY90K8H4

LOADED CONTAINER HANDLERS

SDCY410K5H4

REACH STACKERS

SRSC45H4 | SRSC4535H4 | SRSC4545H4

Since 2006, SANY America has been investing in and growing across the U.S. From our 272-acre facility in Georgia, where we employ over 300 American employees, to our growing dealer network that stretches from New England to Washington, SANY America is dedicated to building business across America.

SANY port equipment is made for the U.S. with components from brands you trust like Cummins, Dana, Kessler and Parker. Our industry-leading warranty is proof of SANY's durability. With our service network and use of American-made components, SANY proudly shows continuous support to our machines and the people who operate them. SANY America is dedicated to helping American-owned businesses thrive with our commitment to value, performance and service.



SDCY90K6H4, SDCY90K7H4, SDCY90K8H4

READY TO **PUT THE WORK** **IN ITS PLACE**

SANY's empty container handlers make quick work of stacking operations in port environments, intermodal facilities and storage yards. Machines are built to stack standard cubes up to eight high and high cubes up to seven high, and the spreaders can accommodate ISO and domestic containers standard. Because safety is paramount, SANY container handlers come standard with modern enhancements, such as bright LED work light package, rear object detection system and twist-lock alarm system. From the comfort of their climate controlled cab, operators appreciate clear visibility and precision controls enabling improved site safety and allowing for fine tuned operations.

**WE'VE GOT
YOUR
BACK**

To provide peace of mind and ensure maximum uptime, SANY backs all its equipment with robust standard warranties. That's our commitment to keeping your fleet running at peak performance. Our network of local dealers will partner with you for routine maintenance and be there for warranty repairs. You can trust SANY to keep you moving, year-round.

**INDUSTRY'S
STRONGEST
STANDARD
WARRANTY** | **3-YEAR
6,000 HOURS**

KEY FEATURES ||| EMPTY CONTAINER HANDLERS

SAFETY FIRST

We don't scrimp on safety. All SANY equipment is loaded with standard safety features. From reverse cameras, object sensors and enhanced visibility to intelligent controls, SANY machines are designed to keep your team, assets and operations running smoothly.

EASE OF SERVICE

Who's got time for downtime? With wide compartment doors, ground-level access and on-board diagnostics, maintenance, repairs, and troubleshooting are easy and efficient.

EASE OF OPERATION

Give operators the tools they need to maximize productivity. SANY machines feature an ergonomic and spacious cab, intuitive controls, comfortable seats and climate control.

RELIABILITY

Since your hydraulic and brake fluid tanks are separate, concerns for fluid contamination and fluid temperatures are mitigated. Your operation can maintain a high-level of uptime and lower maintenance costs for the lifetime of the machine.

MANEUVERABILITY

SANY's robust structure and steer axle design help make the empty container handler agile, without sacrificing durability or performance.

ATTACHMENTS

Power Pile Slope is standard for handling the heaviest reefers and off-center loads. The spreader attachment enables quick and easy operation for ISO or domestic containers. We have indicators on the spreader and in the cab with constant real-time twist-lock information.

INDUSTRY-LEADING WARRANTY

To provide peace of mind and ensure maximum uptime, SANY container handlers are backed by a 3-year/6,000-hour industry-leading standard warranty.

SUPPORT

Service that's local. SANY's dealer network stretches from Maine to Washington, providing parts support and trained technicians to service and maintain all our port equipment.

COMPONENT BRANDS



KESSLER•CO — Parker



FULLY LOADED IS THE NEW STANDARD



**1. CONFIGURABLE
PARAMETERS WITH
WARNING ALARM
AND ON-BOARD
DIAGNOSTICS**



**2. AUTOMATIC
CENTRALIZED
GREASING SYSTEM**



**3. BRIGHT LED
WORKLIGHT PACKAGE**



**4. ELEVATED CAB AT
OPTIMAL POSITIONING
FOR SITE VISIBILITY**

STANDARD FEATURES ||| SDCY90K6H4, SDCY90K7H4, SDCY90K8H4



5. SEPARATE BRAKE AND HYDRAULIC TANKS



6. DRY CHEMICAL FIRE SUPPRESSION SYSTEM



7. TURBO CHARGER WITH COOLDOWN PROTECTION ON SHUTDOWN



8. REVERSE CAMERA AND REAR OBJECT DETECTION SYSTEM



SDCY410K5H4

LOADED UP AND READY TO GO

When it's time to pack them up and ship them off, you're going to want SANY's loaded container handler on your side. These machines are built to stack loaded ISO and domestic containers five high. Fine tuned controls allow for precise movements and maneuverability to load, stack and position containers more than 90,000 lbs around the yard. Operators will appreciate a clear view of the jobsite from the elevated cab, while staying comfortable all day.

**WE'VE GOT
YOUR
BACK**

To provide peace of mind and ensure maximum uptime, SANY backs all its equipment with robust standard warranties. That's our commitment to keeping your fleet running at peak performance. Our network of local dealers will partner with you for routine maintenance and be there for warranty repairs. You can trust SANY to keep you moving, year-round.

**INDUSTRY'S
STRONGEST
STANDARD
WARRANTY** | **3-YEAR
6,000 HOURS**

KEY FEATURES ||| LOADED CONTAINER HANDLERS

STRENGTH

Capable of lifting more than 90,000 lbs, these machines make easy work of the biggest workloads. The dependable Cummins engine under the hood will keep this loaded container handler going strong.

SAFETY

SANY loaded container handlers come standard with reverse camera, rear objection system, bright LED work light package, twist-lock alarm system and dry chemical fire suppression system.

EASE OF MAINTENANCE

Maintenance is a breeze with on-screen system notifications in the cab and ground-level accessibility to service your SANY machine. When it does need service, technicians have on-board diagnostics to make troubleshooting faster and easier.

COMFORT

Operators get into the cab, turn on the air conditioner and the cab cools down in a matter of seconds. With space to move around and clear visibility across the jobsite, they have the comfort and peace of mind to achieve maximum productivity.

TECHNOLOGY

Advanced load-sensing hydraulics ensure that the engine's output and power demand match, keeping it fuel-efficient and on top of its game.

INDUSTRY-LEADING WARRANTY

To provide peace of mind and ensure maximum uptime, SANY container handlers are backed by a 3-year/6,000-hour industry-leading standard warranty.

SUPPORT

Service that's local. SANY's dealer network stretches from Maine to Washington, providing parts support and trained technicians to service and maintain all our port equipment.

COMPONENT BRANDS



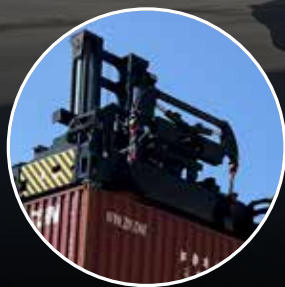
KESSLER•CO → Parker



FULLY LOADED IS THE NEW STANDARD



1. ON-BOARD
DIAGNOSTICS



2. POWERED PILE
SLOPE



3. AUTOMATIC
CENTRALIZED
GREASING SYSTEM



4. BRIGHT LED
WORKLIGHT PACKAGE

7

3

5



5. DRY CHEMICAL FIRE SUPPRESSION SYSTEM



6. SEPARATE BRAKE AND HYDRAULIC TANKS



7. REVERSE CAMERA AND OBJECT SENSORS



8. SPREADERS ARE CHAIN HUNG TO THE GANTRY



SRSC45H4, SRSC4535H4, SRSC4545H4

YOUR GOALS **ARE IN** EASY REACH

The containers have arrived—now it's time to sort 'em and stack 'em high. With SANY's reach stacker, the job will be over before you know it. With the spreader itself capable of handling ISO and domestic containers more than 99,000 lbs, this machine's precision and strength are second to none. Designed to be agile and easily maneuverable in tight spaces, SANY reach stackers are the preferred choice of operators everywhere.

**WE'VE GOT
YOUR
BACK**

To provide peace of mind and ensure maximum uptime, SANY backs all its equipment with robust standard warranties. That's our commitment to keeping your fleet running at peak performance. Our network of local dealers will partner with you for routine maintenance and be there for warranty repairs. You can trust SANY to keep you moving, year-round.

**INDUSTRY'S
STRONGEST
STANDARD
WARRANTY** | **3-YEAR
6,000 HOURS**

KEY FEATURES ||| REACH STACKERS

SAFETY

With lift-override protection actuated, the reach stacker will not be able to lift beyond its designed capacity which keeps operators and ground crews safe. Rear sensors detect objects within 10 feet of the truck and provide a distance reading on the display from the counterweight to the object. The operator is alerted with an audible tone.

CLEAR SIGHT LINES

SANY's powered sliding cab, sloping counterweight and reverse camera create clear sight lines for operators. This aids in maintaining a safe jobsite at all times.

EFFICIENT & DEPENDABLE

Load-sensing hydraulics keep SANY machines running efficiently, while the heavy-duty steer axles and wet disc brakes make our reach stackers dependable performers.

DESIGNED TO PERFORM

With our massive derricking cylinders and telescoping, high-strength boom, SANY reach stackers have the integrity it takes to maintain high performance while working demanding shifts day and night.

EASE OF MAINTENANCE

Daily checks are a breeze because everything is within close proximity and easy reach. The centralized grease pump system ensures constant greasing which protects the machine over its life and saves you time.

INDUSTRY-LEADING WARRANTY

To provide peace of mind and ensure maximum uptime, SANY container handlers are backed by a 3-year/6,000-hour industry-leading standard warranty.

SUPPORT

Service that's local. SANY's dealer network stretches from Maine to Washington, providing parts support and trained technicians to service and maintain all our port equipment.

COMPONENT BRANDS



KESSLER·CO — Parker



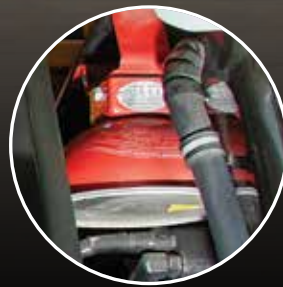
FULLY LOADED IS THE NEW STANDARD



1. POWERED SLIDING CAB



2. POWERED PILE SLOPE



3. DRY CHEMICAL FIRE SUPPRESSION SYSTEM



4. POWER-ON-DEMAND HYDRAULICS

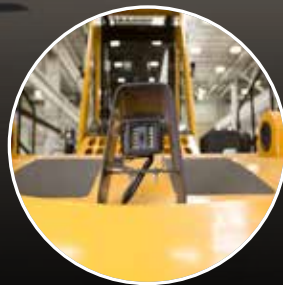
STANDARD FEATURES ||| SRSC45H4, SRSC4535H4, SRC4545H4



5. SEPARATE BRAKE AND HYDRAULIC TANKS



6. LED WORK LIGHTS



7. REVERSE CAMERA AND OBJECT SENSORS



8. ON-BOARD DIAGNOSTICS



THE INDUSTRY'S BEST OPERATOR EXPERIENCE BRAGGING RIGHTS INCLUDED

We created an environment for operators that will keep them safe, comfortable and give them the tools to be their best every day. They have outstanding visibility, roomy cabins and intuitive, familiar and easy-to-use controls. While skill is certainly involved, SANY lowers the learning curve which allows operators to get up to speed faster with all the precision and power they need.

STACK HIGH AND FAST

These machines are perfectly balanced with maximum lifting capacity due to their weight distribution. The empty and loaded container handlers have robust masts and, along with the reach stackers, they are extremely durable thanks to the solid steel construction. Operators appreciate the reach stacker's sliding cab allowing for a clear view of the jobsite to maintain safety and site integrity. With empty container handlers stacking eight high, and both the loaded container handlers and reach stackers stacking five high, yards can accommodate more containers per square foot.

SAFETY IS PARAMOUNT

All SANY container handlers come fully loaded with a bright LED work light package to illuminate even the darkest ports. They also have a high-visibility cabin, on-board fire suppression system, overload alarm system, reverse camera and rear object detection system.

	EMPTY CONTAINER HANDLER			LOADED CONTAINER HANDLER	REACH STACKER		
MODEL	SDCY90K6H4	SDCY90K7H4	SDCY90K8H4	SDCY410K5H4	SRSC45H4	SRSC4535H4	SRSC4545H4
STACKING HEIGHT (8' 6" / 9' 6")	6 / 5	7 / 6	8 / 7	5 / 5	5 / 5	5 / 5	5 / 5
CAPACITY (1ST ROW)	9 MT	9 MT	9 MT	41 MT	45 MT	45 MT	45 MT
CAPACITY (2ND ROW)	NA	NA	NA	NA	31 MT	35 MT	45 MT
CUMMINS QSB 6.7L	•	•	•				
CUMMINS SQL 9L				•	•	•	•
STANDARD POWERED PILE SLOPE	•	•	•	•	•	•	•

CONTAINER HANDLERS

SERVICE, VALUE & SIMPLE OPERATION

BUILT TO ENDURE

When we say that SANY machines are built to endure, we're really talking about service. SANY equipment is intentionally designed to be easily and efficiently serviced with features such as wide compartment doors and ground-level access to make maintenance more efficient. Ease of service means back in service.

TOUGH. RELIABLE. TENACIOUS.

Our container handler family is a must-have at any port, terminal, or intermodal facility. They are built to endure harsh conditions and deliver high performance. Top-notch safety features abound along with, top shelf components and reliable engineering. That means these machines provide your operators and ground crews a safe jobsite and machines with maximized uptime to keep your facility running smoothly.

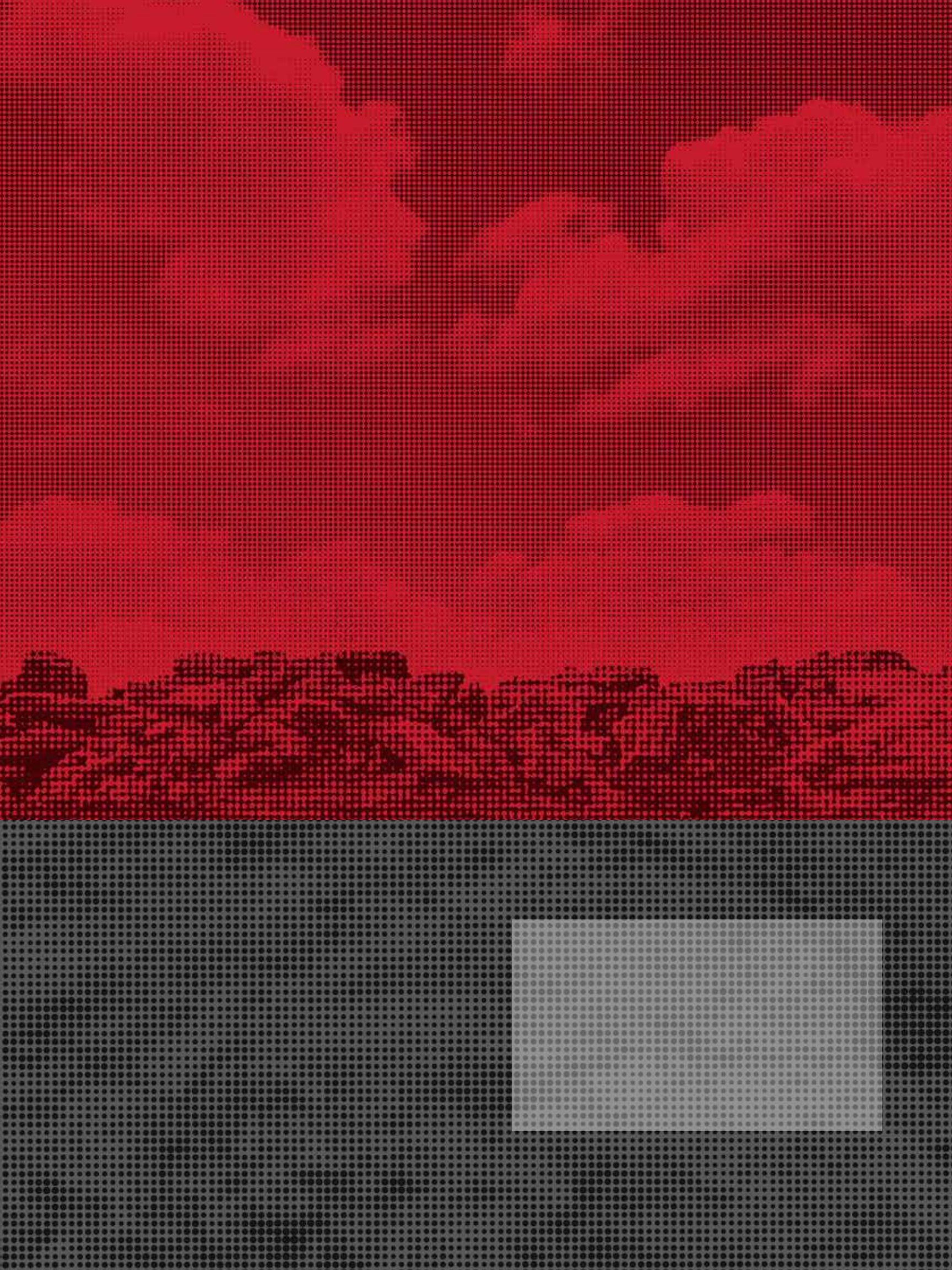
A SOLID INVESTMENT

No nickel and dime scenario here. The features that come optional on other equipment are typically considered standard on SANY machines—that's why fully loaded is the new standard. We're very proud to deliver reliable machines with the most value to you. These machines are workhorses that come with top-of-the-line components to ensure uptime and performance are optimized. With our 3-year/6,000-hour warranty, your investment is as secure as the containers we handle.

The SANY logo is displayed in white, bold, sans-serif capital letters within a red rectangular box. The background of the entire lower half of the advertisement is a dark gray with a fine, repeating dot pattern.

**FULLY LOADED IS THE
NEW STANDARD**

SANYAMERICA.COM





SANY

INDUSTRY'S
STRONGEST
STANDARD
WARRANTY

3-YEAR
6,000 HOURS

SANY America Inc.
318 SANY Way
Peachtree City | GA 30269
| T | 470-552-SANY

PORTBRFLY23CH001

[sanyamerica.com](https://www.sanyamerica.com)

In the interest of continual equipment development, SANY America Inc. reserves the right to change these specifications at any time without prior notification.

© 2023 SANY AMERICA INC.

