

LOADED CONTAINER HANDLER

SDCY410K5H4

STANDARD FEATURES

- ➔ Safety features include LED work light package, alarm system, reverse camera, object detection system and a dry chemical fire suppression system
- ➔ Components from brands you know and trust including Cummins, Dana, Kessler, and Parker
- ➔ Powered Pile Slope and vertical twist-lock on the spreader
- ➔ Elevated Cab

90,390 lbs

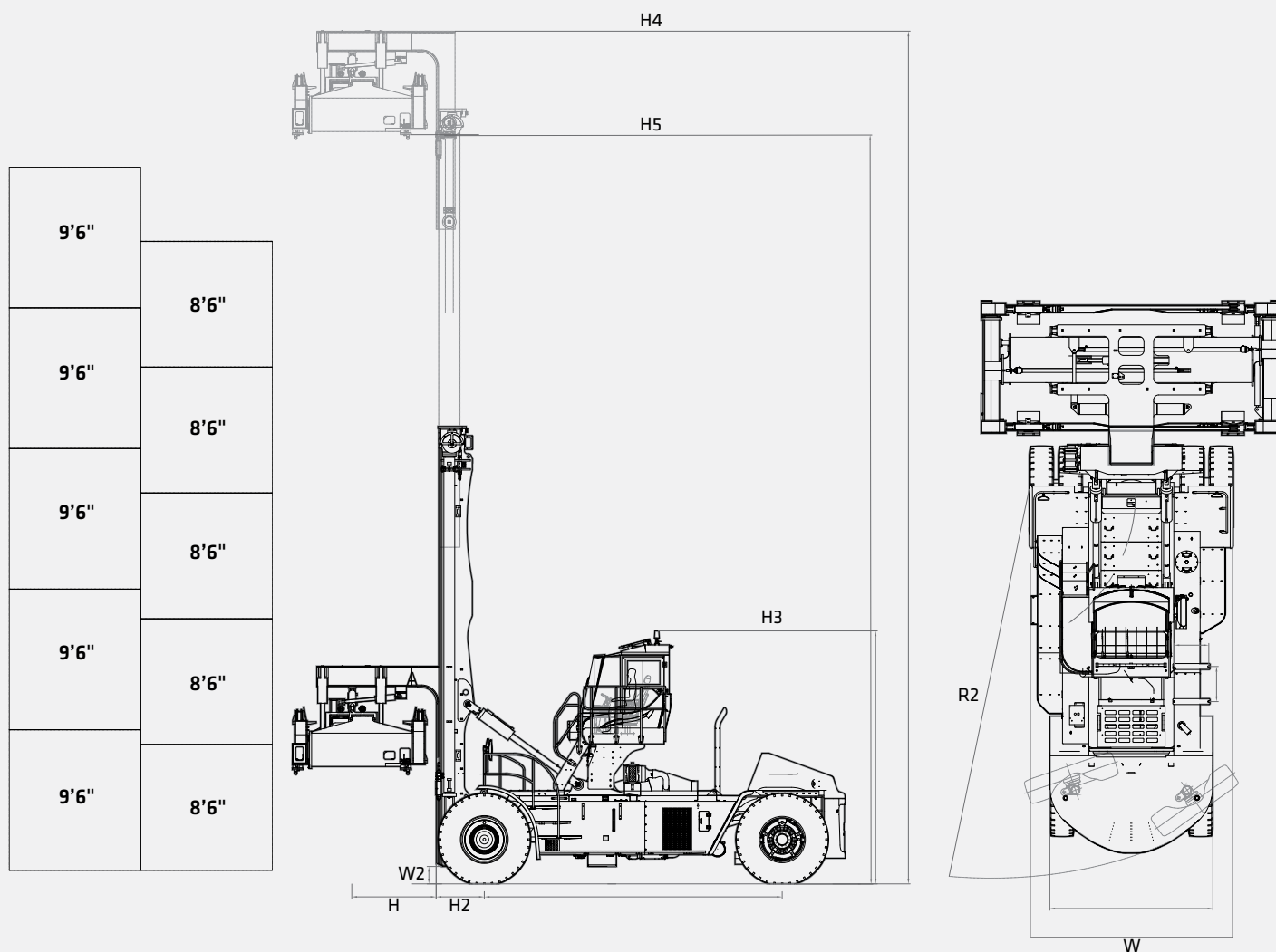
Max. Load

19' 8"

Wheelbase

5 (8' 6" / 9' 6")

Stacking Height



STANDARD AND OPTIONAL EQUIPMENT

s = standard / o = optional

SDCY410K5H4	ENGINE
s	Cummins QSL9 Diesel Engine with 350HP
s	Tier 4 Final EPA Emissions Compliant
s	24V, 100A Alternator
s	High Intake, Long Life Air Filter w/ Safety Element
s	Automatic Fire Extinguisher
s	500 Hour Oil Maintenance Interval
o	Engine Block Heater
DRIVETRAIN	
s	Dana HR3600 Transmission
s	3 FWD & 3 REV Gears
s	Kessler D102 Planetary Drive Axle w/ Wet Brakes
s	18.00 x 33 36 Ply Drive and Steer Pneumatic Tires
HYDRAULIC SYSTEM	
s	Efficient Load Sensing Hydraulic System
s	Optimized Automatic Throttle Up During Lifting Operations
s	SDJ450H 20'/40' Container Spreader for Single Stack ISO Containers
s	Spreader Equipped with Rotation and Powered Pile Slope
s	Wide Twist Lock Spreader for 8'6" and 9'6" Wide Containers
s	Side Shift up to 12" in Both Directions
s	Hydraulic Accumulator on Lift Circuit
s	Spreader Twist Lock Indicator Lights
OPERATOR'S STATION	
s	Enclosed High Visibility Cabin
s	High Mounted Cabin
s	Mechanical Full Suspension Cloth Seat (Grammer)
o	Air Ride, Full Suspension Cloth Seat (Grammer)
s	Ergonomic Multi-Function Joy Stick
s	Intuitive Display Panel
s	Steering Wheel w/ Spinner Knob
s	24V to 12V DC/DC converter
s	Rubber Floor Mat
s	Operator Presence and Restraint System
s	Rubber Mount Isolators to Reduce Cabin Vibrations



*Warranty applies to 2023 Forklift, Container Handler and Reach Stacker models only.

s = standard / o = optional

SDCY410K5H4	OPERATOR'S STATION (CONTINUED)
s	Automatic Climate Control with A/C and Heat
s	Reverse Camera w/ 7" Display
s	Object Detection Sensor up to 10' in Reverse Direction
o	Object Detection Sensor up to 16' in Reverse Direction
s	Telescoping and Tilting Steering Column
s	Front, Top and Rear Wipers
s	Recirculation Fan
s	Top Sun Shade
o	Training Seat
o	Additional Hour Meter (Located in Dash)
o	Reading Light
o	12V - 10A Power Supply
s	Radio System (Includes Radio, Speakers and Antenna)
o	Auxiliary Equipment Mounting Shelf
ELECTRICAL	
s	Automatic Greasing Systems for Spreader and Truck
s	Locking Fuel Cap
o	Cold Climate System: For Temperatures Down to -22°F
o	Empty Seat Shut Down (Factory Preset is 15 Minutes)
s	Lockable Battery Disconnect
s	Operator, Service and Parts Manuals (English)
s	Electric Horn
s	Wide Angle Mirrors
o	Twist Lock Counter
s	2 Front Facing Fender Mounted LED Lights
s	4 Forward Facing Cabin Mounted LED Work Lights
s	2 Rear Facing Mast Mounted LED Lights
s	2 Rear Facing Counterweight Mounted LED Lights
s	4 Spreader Mounted LED Lights
s	Indicator and Hazard lights
s	Rotating Amber Beacon on Boom



sanyamerica.com

PRODUCT SPECIFICATIONS LOADED CONTAINER HANDLER ||| SDCY410K5H4

WORKING RANGE

SPECIFICATIONS			
GENERAL			
Stacking Height, 9' 6" / 8' 6"		5 / 5 High	
Load Capacity			
Mast Extended	77,160 lbs	35 000 kg	
Mast Retracted	90,390 lbs	41 000 kg	
Wheelbase	236"	6 000 mm	
Fuel Tank Capacity	185 gal	700 l	
Hydraulic Tank Capacity			
Main	185 gal	700 l	
DEF	10 gal	38 l	
WEIGHTS			
Truck Weight, Unloaded		174,200 lbs	79 000 kg
Axle Weight, Loaded			
Front	244,500 lbs	110 900 kg	
Rear	20,060 lbs	9 100 kg	
Axle Weight, Unloaded			
Front	114,000 lbs	51 700 kg	
Rear	60,190 lbs	27 300 kg	
TIRES			
Tire Type		Pneumatic	
Front Tires		18.00-33 36PR	
Rear Tires		18.00-33 36PR	
Number of Tires, Front / Rear		4 / 2	
Front Track Width		119"	3 033 mm
Rear Track Width		110"	2 790 mm

PERFORMANCE			
Travel Speed Loaded / Unloaded		13.7 / 15.5	22 / 25
Lift Speed Loaded / Unloaded		43 / 59	0.22 / 0.30
Lower Speed Loaded / Unloaded		59 / 49	0.30 / 0.25
Drawbar Max.		60,700 lbs	270 kN
Gradeability @ 1 mph (1.6 km/h)(w/load)		22%	

MISCELLANEOUS			
Fuel Tank Capacity		185 gal	700 l
Hydraulic Tank Capacity		185 gal	700 l
DEF Tank Capacity		10 gal	38 l

In the interest of continual equipment development, SANY America Inc. reserves the right to change these specifications at any time without prior notification.

* All imperial numbers have been rounded to the nearest whole number.
Ratings are based on ISO 10567:2007. Lift capacity does not exceed 75% of tipping load with the machine on firm, level ground or 87% of hydraulic lifting capacity.

POWERTRAIN

Fuel Type	Diesel	
Engine Manufacturer & Model	Diesel QSL 9	
Emissions Tier	Tier 4 Final	
Engine Rated Power @ Rated RPM	350 HP	261 kW
Maximum Engine Torque @ RPM	1,200 @ 1,500 ft-lb	1 628 @ 1500 Nm
Governed Speed	2,100 RPM	
Number of Cylinders / Displacement	6 / 8.9 l	
Turbocharger	Variable Geometry	
Alternator Rate Output	100A	
Drive Axle Manufacturer & Model	Kessler D102	
Transmission Type	Powershift	
Transmission Manufacturer & Model	Dana 15.5HR36000	
Number of Gears Forward / Reverse	4 / 4	
System Voltage / Battery Capacity	24 V / 165 Ah	
Service Brake	Wet Disc	
Parking Brake	Dry Disc	

STANDARD MAST & SPREADER

Mast Type	Duplex	
Free Lift Height	--	--
Lift Height, Under Twistlocks Max.	591"	15 000 mm
Lift Height, Under Twistlocks Min.	87"	2 200 mm
Mast Height Lowered	365"	9 270 mm
Mast Height Extended, Top of Spreader	677"	17 190 mm
Spreader Adjustment, Min. / Max.	238-480"	6 053 / 12 185 mm
Sideshift Distance	12"	+/- 300 mm
Pile Slope Type	Powered	
Pile Slope	+/- 5°	
Slewing	+/- 3°	

DIMENSIONS

Mast Tilt, Fwd / Back (α / β)		5° / 10°	
H	Load Center	5' 7"	1 700 mm
H2	Load Distance	3' 2"	971 mm
H3	Cab Height w/ Beacon	16' 9"	5 098 mm
H4	Mast Height Extended, Top of Spreader	677"	17 190 mm
H5	Lift Height, Under Twistlocks Max.	591"	15 000 mm
Length to Load Face		27'	8 235 mm
W	Overall Width w/o Spreader	13' 6"	4 118 mm
W2	Minimum Ground Clearance	1' 2"	350 mm
Minimum Aisle Width (20' Container)		39' 11"	12 160 mm
Minimum Aisle Width (40' Container)		49' 7"	15 110 mm
Operator Seat Height		11' 7"	3 537 mm
R2	Outside Turning Radius	26' 7"	8 100 mm



SANY America Inc.
318 SANY Way
Peachtree City, Georgia 30269
470.552.SANY

LIFTING PERFORMANCE