

SCP130A
SCP160H4
SCP250H4
SCP320H4

Forklift Trucks



MORE THAN *Strength*

MORE THAN
MACHINES™



MORE THAN Heavy Duty

SANY heavy-duty forklift trucks have the strength, toughness and agility to carry the day on any job site. Four models with 13-32 metric ton hoist capacity, superior visibility and rugged construction are ideal for precast concrete, steel, lumber, 20-foot cargo containers or breakbulk cargo.



We've Got Your Back

To provide peace of mind and ensure maximum uptime, SANY backs all of its port equipment with an industry-leading two-year, 4,000-hour warranty. That's our commitment to keep your fleet running at peak performance. Our network of local dealers will partner with you for routine maintenance and be there for warranty repairs. Trust SANY to keep you moving, year-round.



MORE THAN
MACHINES

sanyamerica.com



MORE THAN MACHINES™

The intelligent-control system monitors lifting conditions to **prevent rollovers**. The onboard **fire-suppression** system automatically engages extinguishers when flames are detected.

Safe Operation



Clean sight lines from the cab are enhanced by a rear-facing camera system and a sloping, sculpted counterweight. The operator has excellent forward view through the mast. The radar system allows the operator to view images that are behind the truck, as well as display the distance the object is from the rear of the truck.

Commanding Views



Smooth lifting of loads from 13 to 32 metric tons is aided by fuel-efficient, **load-sensing hydraulics** that dynamically match engine output to lifting demand. Lifting speeds up to 79 feet per minute ensure productivity, while the **tight turning radius** is ideal for work on crowded job sites.

Total Performance



The high-strength mast is anchored by massive tilt cylinders that control mast angle. High-strength steel and quality welds are evident all over the machine. Trusted, industry-leading components such as Tier 4 Cummins engines, Dana transmissions and Kessler drive axles mean all of the strength, performance and efficiency you need are built in.



Rugged Design



MORE THAN MACHINES



MORE THAN MACHINES™

The hydraulically tilting cab and spring-enabled hood provide quick access to major components. A **large sight glass** makes it easy to check hydraulic fluid level and purity. The steer axle and mast rollers have **central grease points** for quick routine maintenance. The diesel exhaust fluid (DEF) tank is easily accessed.

Ease of Maintenance

5

Piston pumps help extend the life of hydraulic hoses and components. Separate tanks for main hydraulics and brakes (on larger models) prevent oil contamination. Oversize hydraulic oil coolers boost performance and extend component life.

Reliability & Uptime

6

The **spacious, climate-controlled cab** features panoramic views, well-placed controls and displays that monitor the job site and operating/lifting conditions. **Intuitive controls** (levers or joystick) make it easy to operate the mast and carriage. The steering column is adjustable to suit operator preference. Operators will appreciate the fully adjustable Grammer seat. The displays delivers rear-camera feed and **real-time data** on hydraulic pressure, engine RPM, speed, loads and fault codes.

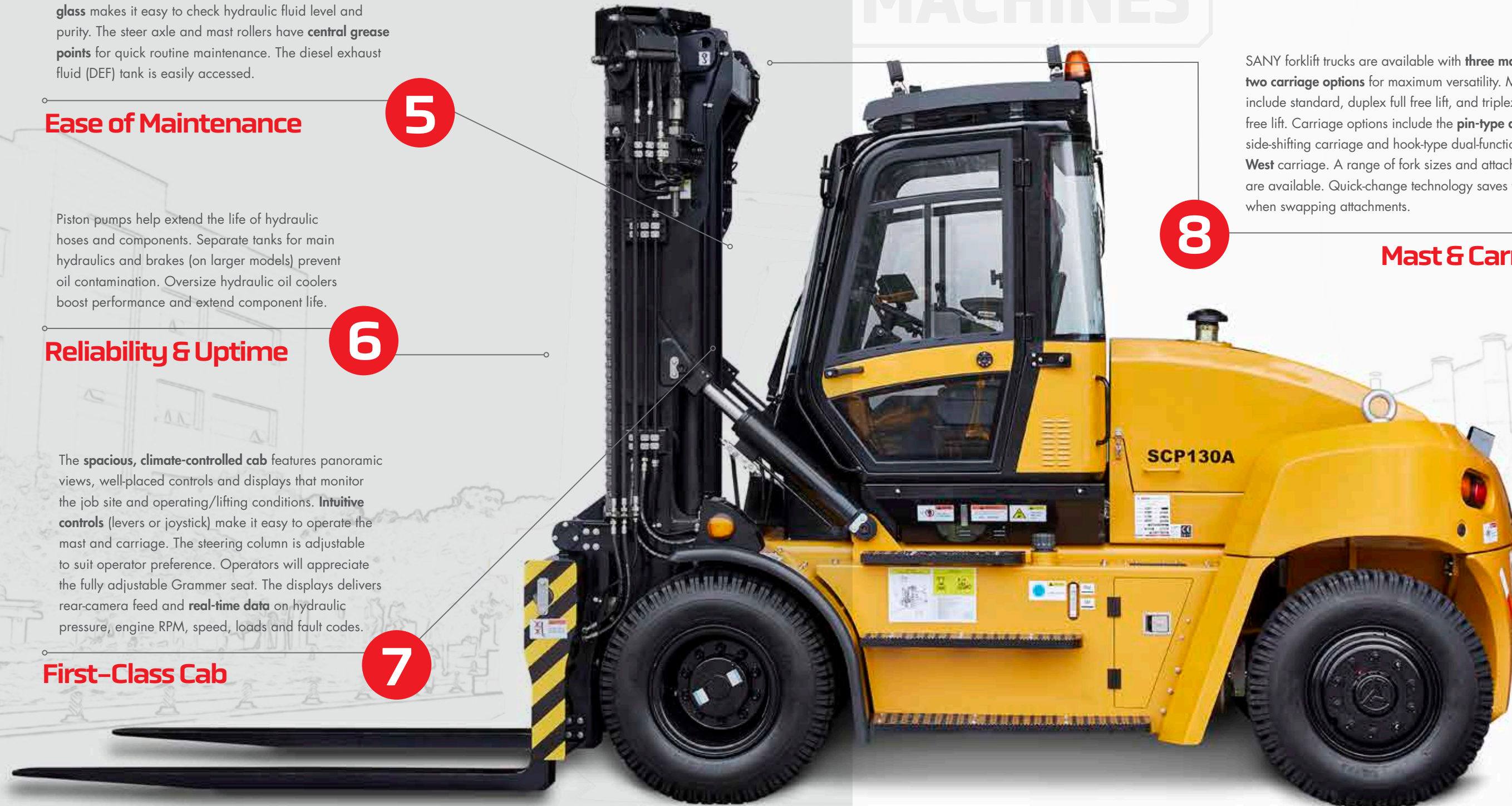
First-Class Cab

7

SANY forklift trucks are available with **three mast** and **two carriage options** for maximum versatility. Mast types include standard, duplex full free lift, and triplex full free lift. Carriage options include the **pin-type apron-style** side-shifting carriage and hook-type dual-function **Terminal West** carriage. A range of fork sizes and attachments are available. Quick-change technology saves time when swapping attachments.

8

Mast & Carriage



MORE THAN MACHINES

MORE THAN Tech



Model SCP130A | SERIES TECHNICAL SPECIFICATIONS

GENERAL						WEIGHTS					WHEELS	
LOAD			WHEEL BASE	TANK CAPACITY		TOTAL TRUCK	AXLE LOADING				PNEUMATIC	
RATED CAPACITY	CENTER	DISTANCE		HYDRAULIC MAIN	FUEL		WITHOUT LOAD	WITH LOAD		WITHOUT LOAD		DRIVE
28,600 lb	24 in	34 in	114 in	45 gal	50 gal	37,400 lb	59,840 lb	5,060 lb	17,358 lb	18,920 lb	10 x 20 16PR	10 x 20 16PR
13 000 kg	600 mm	869 mm	2 900 mm	170 L	190 L	16 490 kg	27 200 kg	2 300 kg	7 890 kg	8 600 kg		

DIMENSIONS													
MAST				OVERALL				FORK			CARRIAGE	FORK SPREAD	
TILT FWD (a)	HEIGHT LOWERED	FREELIFT TOP OF FORK	HEIGHT EXTENDED	CAB HEIGHT	LENGTH	LENGTH TO LOAD FACE	WIDTH DRIVE TIRES	THICKNESS	WIDTH	LENGTH	WIDTH	IN-IN MINIMUM	OUT-OUT MAXIMUM
12°	143 in	0 in	216 in	129 in	275 in	179 in	93 in	2.95 in	7.9 in	96 in	93 in	19 in	88.8 in
15°	3 635 mm	0 mm	5 478 mm	3 292 mm	6 988 mm	4 548 mm	2 366 mm	75 mm	200 mm	2 440 mm	2 366 mm	495 mm	2 255 mm

DIMENSIONS				PERFORMANCE T4								
GROUND CLEARANCE		AISLE WIDTH	TURNING RADIUS	SPEED				DRAWBAR	GRADEABILITY			
UNDER MAST WITH LOAD	CENTER WHEELBASE	LOAD LENGTH MINIMUM	OUTSIDE	TRAVEL		LIFTING		LOWERING		PULL-MAX	@ 1 MPH (1.6 KM/H)	
9 in	10 in	304 in	163 in	18.6 mph	19 mph	79 ft/min	88 ft/min	98 ft/min	94 ft/min	23,155 lbf		
230 mm	264 mm	7 728 mm	4 150 mm	30 km/h	31 km/h	0.4 m/s	0.45 m/s	0.50 m/s	0.48 m/s	103 kN		

POWERTRAIN T4									
ENGINE						ALTERNATOR	DRIVE AXLE	TRANSMISSION	
TYPE	OUTPUT		GOVERNED SPEED	CYLINDERS		TURBOCHARGER	AMPS		
	Diesel	160 hp		230 hp	4				
Cummins	119 kW	172 kW	2,300 rpm			95 A			

POWERTRAIN T4					MAST					
GEARS		BATTERY	BRAKES		TANK CAPACITY	FORK		*DALH	*EXTENDED	*FREELIFT
FWD	REV	CAPACITY		PARKING	DEF	HEIGHT *MAXIMUM			HEIGHT	
3	3	2 x12 V 165 Ah CCA	Wet disc	Dry disc	5 gal	148 in 3 760 mm	143 in 3 635 mm	216 in 5 480 mm		-
					19 L	196 in 5 000 mm	167 in 4 230 mm	263 in 6 680 mm		
						236 in 6 000 mm	188 in 4 780 mm	306 in 7 780 mm		
						256 in 6 500 mm	198 in 5 030 mm	328 in 8 280 mm		

Attachment Options

Forks



Rated Capacity: 10t, 16t, 18t, 25t, 28t, 30t, 32t, 35t, 46t

Application: Large tonnage cargo, bulk cargo

Clamp



Rated Capacity: 10t, 16t, 18t, 25t, 28t, 30t, 32t, 35t, 46t

Application: Timber

Coil Ram



Rated Capacity: 10t, 16t, 18t, 25t, 28t, 30t, 32t, 35t, 46t

Application: Rolled cargo such as steel coil, wire, paper, etc.

Models

SCP130A | SCP160H4
SCP250H4 | SCP320H4

Container Spreader



Rated Capacity: 9t

Application: ISO 20'/40' containers

Truck Chassis Handler



Rated Capacity: 4.5t

Application: Container chassis

PC Prefabrication Unit Attachment



Rated Capacity: 16t

Application: PC prefabrication unit

Main frame color for all attachments: Engineering black

Model SCP160H4 | SERIES TECHNICAL SPECIFICATIONS

GENERAL						WEIGHTS					WHEELS		
LOAD			WHEEL BASE	TANK CAPACITY		TOTAL TRUCK	AXLE LOADING				PNEUMATIC		
RATED CAPACITY	CENTER	DISTANCE		HYDRAULIC MAIN	BRAKE FUEL		WITHOUT LOAD	WITH LOAD		WITHOUT LOAD		DRIVE	STEER
35,274 lb	48 in	39 in	148 in	100 gal	39.6 gal	114 gal	56,218 lb	83,074 lb	8,417 lb	26,085 lb	30,133 lb	12 x 24 24PR	12 x 24 24PR
16 000 kg	1 219 mm	1 010 mm	3 750 mm	380 L	150 L	430 L	25 500 kg	37 682 kg	3 818 kg	11 832 kg	13 668 kg		

DIMENSIONS													
MAST				OVERALL				FORK			CARRIAGE	FORK SPREAD	
TILT FWD (a)	HEIGHT LOWERED	FREELIFT TOP OF FORK	HEIGHT EXTENDED	CAB HEIGHT	LENGTH	LENGTH TO LOAD FACE	WIDTH DRIVE TIRES	THICKNESS	WIDTH	LENGTH	WIDTH	IN-IN MINIMUM	OUT-OUT MAXIMUM
5°	148 in	0 in	225 in	137.6 in	318 in	223 in	103 in	3.94 in	7.9 in	94 in	102.4 in	27.5 in	91 in
10°	3 760 mm	0 mm	5 710 mm	3 495 mm	8 070 mm	5 670 mm	2 620 mm	100 mm	200 mm	2 400 mm	2 600 mm	700 mm	2 310 mm

DIMENSIONS				PERFORMANCE T4								
GROUND CLEARANCE		AISLE WIDTH	TURNING RADIUS	SPEED				DRAWBAR	GRADEABILITY			
UNDER MAST WITH LOAD	CENTER WHEELBASE	LOAD LENGTH MINIMUM	OUTSIDE	TRAVEL		LIFTING		LOWERING		PULL-MAX	@ 1 MPH (1.6 KM/H)	
9.8 in	13 in	347 in	201 in	17 mph	18 mph	69 ft/min	79 ft/min	79 ft/min	79 ft/min	31,248 lbf		
250 mm	330 mm	8 810 mm	5 100 mm	28 km/h	30 km/h	0.35 m/s	0.4 m/s	0.4 m/s	0.4 m/s	139 kN	33%	55%

POWERTRAIN T4									
ENGINE						ALTERNATOR	DRIVE AXLE	TRANSMISSION	
TYPE	OUTPUT		GOVERNED SPEED	CYLINDERS		TURBOCHARGER	AMPS		
	Diesel	225 hp		230 hp	4				
Cummins	168 kW	172 kW	2,200 rpm			95 A			

POWERTRAIN T4					MAST					
GEARS		BATTERY	BRAKES		TANK CAPACITY	FORK		*DALH	*EXTENDED	*FREELIFT
FWD	REV	CAPACITY		PARKING	DEF	HEIGHT *MAXIMUM			HEIGHT	
3	3	2 x12 V 165 Ah CCA	Wet disc	Dry disc	5 gal	118 in 3 000 mm	128 in 3 260 mm	185 in 4 710 mm		-
					19 L	137 in 3 500 mm	138 in 3 510 mm	205 in 5 210 mm		
						157 in 4 000 mm	148 in 3 760 mm	225 in 5 710 mm		
						177 in 4 500 mm	158 in 4 010 mm	244 in 6 210 mm		
						196 in 5 000 mm	168 in 4 260 mm	264 in 6 710 mm		
						216 in 5 500 mm	178 in 4 510 mm	284 in 7 210 mm		
						236 in 6 000 mm	187 in 4 760 mm	304 in 7 710 mm		
						256 in 6 500 mm	197 in 5 010 mm	323 in 8 210 mm		
						275 in 7 000 mm	207 in 5 260 mm	343 in 8 710 mm		

MORE THAN
MACHINES

sanyamerica.com

* All imperial numbers have been rounded to the nearest whole number.

MORE THAN *Tech*



Model SCP250H4 | SERIES TECHNICAL SPECIFICATIONS

GENERAL							WEIGHTS					WHEELS	
LOAD			WHEEL BASE	TANK CAPACITY			TOTAL TRUCK WITHOUT LOAD	AXLE LOADING				PNEUMATIC	
RATED CAPACITY	CENTER	DISTANCE		HYDRAULIC	FUEL	WITHOUT LOAD		WITH LOAD		WITHOUT LOAD		DRIVE	STEER
			MAIN	BRAKE			FRONT	REAR	FRONT	REAR			
55,116 lb	48 in	44.72 in	100 gal	39.6 gal	114 gal	81,350 lb	124,341 lb	12,125 lb	40,565 lb	40,786 lb	14 x 24 24PR	14 x 24 24PR	
25 000 kg	1 220 mm	1 136 mm	380 L	150 L	430 L	36 900 kg	56 400 kg	5 500 kg	18 400 kg	18 500 kg			

DIMENSIONS													
MAST			OVERALL					FORK			CARRIAGE	FORK SPREAD	
TILT FWD (a)	HEIGHT LOWERED	FREELIFT TOP OF FORK	HEIGHT EXTENDED	CAB HEIGHT	LENGTH	LENGTH TO LOAD FACE	WIDTH DRIVE TIRES	THICKNESS	WIDTH	LENGTH	WIDTH	IN-IN MINIMUM	OUT-OUT MAXIMUM
5°	156 in	0 in	232 in	141.8 in	350 in	253 in	122 in	4.33 in	9.8 in	94 in	122 in	27.5 in	91 in
10°	3 950 mm	0 mm	5 710 mm	3 603 mm	8 880 mm	6 430 mm	3 100 mm	110 mm	250 mm	2 400 mm	3 100 mm	700 mm	2 310 mm

DIMENSIONS				PERFORMANCE T4								
GROUND CLEARANCE		AISLE WIDTH	TURNING RADIUS	SPEED				DRAWBAR	GRADEABILITY			
UNDER MAST WITH LOAD	CENTER WHEELBASE	LOAD LENGTH MINIMUM	OUTSIDE	TRAVEL		LIFTING		LOWERING		PULL-MAX	@ 1 MPH (1.6 KM/H)	
				WITH LOAD	WITHOUT LOAD	WITH LOAD	WITHOUT LOAD	WITH LOAD	WITHOUT LOAD		WITH LOAD	WITHOUT LOAD
11.8 in	12.6 in	347 in	201 in	16 mph	18 mph	49 ft/min	59 ft/min	79 ft/min	79 ft/min	39,550 lbf	29%	59%
300 mm	320 mm	8 810 mm	5 100 mm	26 km/h	30 km/h	0.25 m/s	0.3 m/s	0.4 m/s	0.4 m/s	176 kN		

POWERTRAIN T4									
ENGINE						ALTERNATOR	DRIVE AXLE	TRANSMISSION	
TYPE	OUTPUT		GOVERNED SPEED	CYLINDERS		TURBOCHARGER	AMPS		
	RATED	PEAK		NUMBER	DISP				
Diesel	225 hp	230 hp	2,200 rpm	6	6.7 L	Water-cooled variable geometry	24 V	Kessler D-91	HR32334
Cummins	168 kW	172 kW							

POWERTRAIN T4					MAST						
GEARS		BATTERY	BRAKES		TANK CAPACITY	TYPE	FORK		*DALH	*EXTENDED	*FREELIFT
FWD	REV	CAPACITY		PARKING	DEF		HEIGHT	*MAXIMUM	HEIGHT		
3	3	2 x12 V 165 Ah CCA	Wet disc	Dry disc	5 gal 19 L	Duplex w/o Freelif	118 in 3 000 mm	136 in 3 460 mm	193 in 4 905 mm		-
							137 in 3 500 mm	146 in 3 710 mm	213 in 5 405 mm		
							157 in 4 000 mm	156 in 3 960 mm	232 in 5 905 mm		
							177 in 4 500 mm	166 in 4 210 mm	252 in 6 405 mm		
							196 in 5 000 mm	176 in 4 460 mm	272 in 6 905 mm		
							216 in 5 500 mm	185 in 4 710 mm	292 in 7 405 mm		
							236 in 6 000 mm	195 in 4 960 mm	311 in 7 905 mm		
							256 in 6 500 mm	205 in 5 210 mm	331 in 8 405 mm		
							275 in 7 000 mm	215 in 5 460 mm	351 in 8 905 mm		

Attachment Options

Forks



Rated Capacity: 10t, 16t, 18t, 25t, 28t, 30t, 32t, 35t, 46t

Application: Large tonnage cargo, bulk cargo

Clamp



Rated Capacity: 10t, 16t, 18t, 25t, 28t, 30t, 32t, 35t, 46t

Application: Timber

Coil Ram



Rated Capacity: 10t, 16t, 18t, 25t, 28t, 30t, 32t, 35t, 46t

Application: Rolled cargo such as steel coil, wire, paper, etc.

Models SCP130A | SCP160H4 SCP250H4 | SCP320H4

Container Spreader



Rated Capacity: 9t

Application: ISO 20'/40' containers

Truck Chassis Handler



Rated Capacity: 4.5t

Application: Container chassis

PC Prefabrication Unit Attachment



Rated Capacity: 16t

Application: PC prefabrication unit

Main frame color for all attachments: Engineering black

Model SCP320H4 | SERIES TECHNICAL SPECIFICATIONS

GENERAL							WEIGHTS					WHEELS	
LOAD			WHEEL BASE	TANK CAPACITY			TOTAL TRUCK WITHOUT LOAD	AXLE LOADING				PNEUMATIC	
RATED CAPACITY	CENTER	DISTANCE		HYDRAULIC	FUEL	WITHOUT LOAD		WITH LOAD		WITHOUT LOAD		DRIVE	STEER
			MAIN	BRAKE			FRONT	REAR	FRONT	REAR			
70,548 lb	48 in	48.4 in	189 in	105 gal	26 gal	105 gal	99,649 lb	166,008 lb	10,803 lb	51,147 lb	4,850 lb	16 x 25 PR	
32 000 kg	1 220 mm	1 230 mm	4 800 mm	400 L	100 L	400 L	45 200 kg	75 300 kg	4 900 kg	23 200 kg	2 200 kg	16 x 25 PR	

DIMENSIONS													
MAST			OVERALL					FORK			CARRIAGE	FORK SPREAD	
TILT FWD (a)	HEIGHT LOWERED	FREELIFT TOP OF FORK	HEIGHT EXTENDED	CAB HEIGHT	LENGTH	LENGTH TO LOAD FACE	WIDTH DRIVE TIRES	THICKNESS	WIDTH	LENGTH	WIDTH	IN-IN MINIMUM	OUT-OUT MAXIMUM
5°	173 in	0 in	250 in	136.1 in	347 in	279 in	139 in	4.92 in	11.81 in	96 in	129.9 in	36.2 in	112.2 in
10°	4 400 mm	0 mm	6 345 mm	3 457 mm	9 528 mm	7 090 mm	3 520 mm	125 mm	300 mm	2 440 mm	3 300 mm	920 mm	2 850 mm

DIMENSIONS				PERFORMANCE T4								
GROUND CLEARANCE		AISLE WIDTH	TURNING RADIUS	SPEED				DRAWBAR	GRADEABILITY			
UNDER MAST WITH LOAD	CENTER WHEELBASE	LOAD LENGTH MINIMUM	OUTSIDE	TRAVEL		LIFTING		LOWERING		PULL-MAX	@ 1 MPH (1.6 KM/H)	
				WITH LOAD	WITHOUT LOAD	WITH LOAD	WITHOUT LOAD	WITH LOAD	WITHOUT LOAD		WITH LOAD	WITHOUT LOAD
13.8 in	11.81 in	327 in	260 in	15.5 mph	17 mph	49 ft/min	59 ft/min	79 ft/min	79 ft/min	39,550 lbf	26%	54%
350 mm	300 mm	9 458 mm	6 600 mm	25 km/h	28 km/h	0.25 m/s	0.3 m/s	0.4 m/s	0.4 m/s	176 kN		

POWERTRAIN T4									
ENGINE						ALTERNATOR	DRIVE AXLE	TRANSMISSION	
TYPE	OUTPUT		GOVERNED SPEED	CYLINDERS		TURBOCHARGER	AMPS		
	RATED	PEAK		NUMBER	DISP				
Diesel	260 hp	270 hp	2,200 rpm	6	6.7 L	Water-cooled variable geometry	24 V	Kessler D-91	HR32334
Cummins	194 kW	201 kW							

POWERTRAIN T4					MAST						
GEARS		BATTERY	BRAKES		TANK CAPACITY	TYPE	FORK		*DALH	*EXTENDED	*FREELIFT
FWD	REV	CAPACITY		PARKING	DEF		HEIGHT	*MAXIMUM	HEIGHT		
3	3	2 x12 V 165 Ah CCA	Wet disc	Dry disc	5 gal 19 L	Duplex w/o Freelif	157 in 4 000 mm	172 in 4 360 mm	248 in 6 305 mm		-
							177 in 4 500 mm	182 in 4 610 mm	268 in 6 805 mm		
							196 in 5 000 mm	192 in 4 860 mm	288 in 7 305 mm		
							216 in 5 500 mm	201 in 5 110 mm	308 in 7 805 mm		
							236 in 6 000 mm	211 in 5 360 mm	327 in 8 305 mm		
							256 in 6 500 mm	221 in 5 610 mm	347 in 8 805 mm		
							275 in 7 000 mm	231 in 5 860 mm	367 in 9 305 mm		

* All imperial numbers have been rounded to the nearest whole number.



318 COOPER CIRCLE
PEACHTREE CITY | GA 30269
| T | 678.251.2810
| F | 770.632.7820

sanyamerica.com