

# LARGE EXCAVATOR

# SY500H

## STANDARD FEATURES

- ➔ Removable counterweight
- ➔ 1-way and 2-way primary auxiliary and 2-way secondary auxiliary circuits
- ➔ Standard hydraulic quick coupler
- ➔ Heated air ride seat
- ➔ Rear view cameras
- ➔ Powerful Cummins Engine

**400 hp**

Gross Power

**27' 0"**

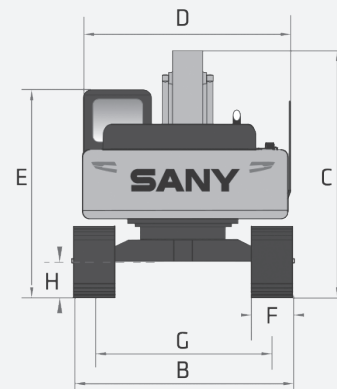
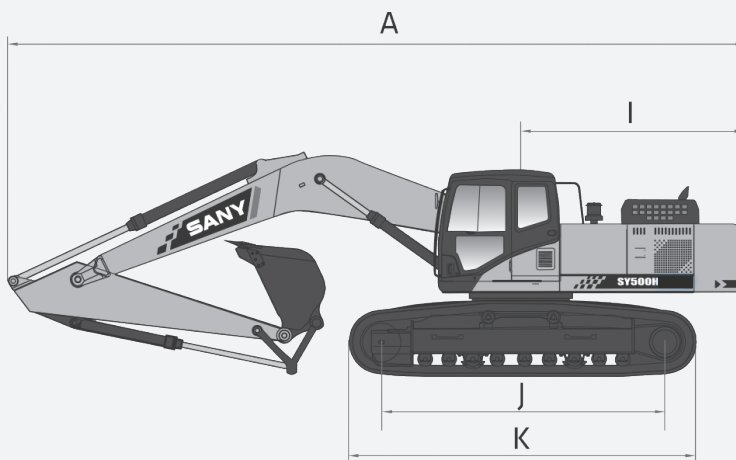
Dig Depth

**120,593 lbs**

Operating Weight

**61,822 lbs**

Bucket Breakout



## TECHNICAL SPECIFICATIONS

### TECHNICAL SPECIFICATIONS

Operating Weight	120,593 lbs	54 700 kg
Ground Pressure	8.6 psi	59.0 kPa
<b>Engine</b>	Cummins QSG12 Stage V / Tier4F	
Displacement	720.1 in <sup>3</sup>	11.8 L
Gross Power	400 HP	298 kW
<b>Hydraulics</b>	Positive Flow Control w/Pilot Control	
Main Hydraulic Pump	Axial Piston - Variable Displacement	
Operating Flow (maximum)	190.2 gal/min	720.0 L/min
Operating Pressure (maximum)	4,975 psi	34.3 MPa
Power Boost Pressure (maximum)	5,410 psi	37.3 MPa
<b>Travel Motor</b>	Axial Piston with Park Brake	
Travel Pressure (maximum)	4,975 psi	34.3 MPa
Travel Speeds (maximum)	2.1 / 3.2 mph	3.4 / 5.2 km/hr
Travel Effort (maximum)	76,101 lbf	339.0 kN
Grade Capability (maximum)	35°	
<b>Swing Motor</b>	Axial Piston with Swing Brake	
Swing Pressure (maximum)	3,989 psi	27.5 MPa
Swing Speed (maximum)	8.0 RPM	
<b>Undercarriage (standard)</b>	Steel Track	
Track Shoe Width (standard)	35"	900 mm
Track Rollers (per side)	9	
Carrier Rollers (per side)	2	

## DIMENSIONS

### DIMENSIONS

Boom Length	23'	7 000 mm
Stick (Arm) Length	12' 9"	3 900 mm
A Transport Length	39' 11"	12 194 mm
B Transport Width	11' 11"	3 640 mm
C Transport Height	12' 8"	3 874 mm
D Upper Structure Width	10' 10"	3 292 mm
E Cab Height	11' 3"	3 423 mm
F Track Width (standard shoe)	35"	900 mm
G Track Gauge	9'	2 740 mm
H Ground Clearance	22'	560 mm
I Tail Swing Radius	12' 8"	3 850 mm
J Track Length on Ground	14' 6"	4 412 mm
K Track Length	17' 11"	5 459 mm

### SERVICE REFILL CAPACITIES

Fuel Tank Capacity	179.6 gal	680.0 L
DEF Tank Capacity	15.0 gal	56.6 L
Hydraulic Tank Capacity	126.8 gal	480.0 L
Engine Oil Capacity	8.7 gal	33.0 L
Cooling System Capacity	13.2 gal	50.0 L



STANDARD AND OPTIONAL EQUIPMENT

s = standard / o = optional

SY500H	ENGINE
s	11.8 l Cummins
s	Auto-idle
s	Dual-element dry air filter
s	Automatic belt-tension device
s	Batteries 24V (2 - 12V)
s	Coolant Expansion tank
s	Electronic engine control
s	Enclosed fan guard
s	Engine coolant to -37 deg. C (-34 deg. F)
s	Fuel filter with water separator
s	Full-flow oil filter
s	Turbocharger with charge air cooler
s	High flow hydraulically powered cooling fan
s	500-hour engine-oil-change interval
s	70% (35 deg.) off-level capability
s	Engine air precleaner
s	Severe-duty fuel filter
HYDRAULIC SYSTEM	
s	Spring-applied, hydraulically released automatic swing brake
s	Auxiliary hydraulic-flow adjustments through monitor
s	Lift power boost on joystick
s	Control pattern change valve
s	Auxiliary hydraulics with 1 and 2-way combination piping for high flow
s	Auxiliary hydraulics with 2- way rotation piping and controls
s	Auxiliary pilot and electric controls
s	Quick coupler plumbing and control
UNDERCARRIAGE	
s	Planetary drive with axial piston motors
s	Propel motor shields
s	Spring-applied, hydraulically released automatic propel brake
s	Track guides, front idler and 2 additional per side
s	2-speed travel selection
s	Upper carrier rollers (2)
s	Sealed and lubricated track chain
s	Triple semi-grouser shoes, 900 mm (36")
s	Undercarriage frame opening guard
BOOM & STICK	
s	Boom 7 m (23')
o	Stick, 3.9 m (12.8')
UPPERSTRUCTURE	
s	Right-hand, left-hand, and counterweight mirrors
s	Vandal lock with ignition key: Cab door /Service door/ Toolbox/Cab Filter
s	Debris screen in side panel
s	Remote-mounted engine oil and fuel filters
s	Heavy duty triangle channel frame guard
s	Hydraulic removable counterweight 9.7 kg (21,380 lbs)

In the interest of continual equipment development, SANY America Inc. reserves the right to change these specifications at any time without prior notification.  
 ©2025 SANY America Inc. HEXPS25SY500H003



\*Warranty applies to 2025 Excavator and Wheel Loader models



STANDARD AND OPTIONAL EQUIPMENT

s = standard / o = optional

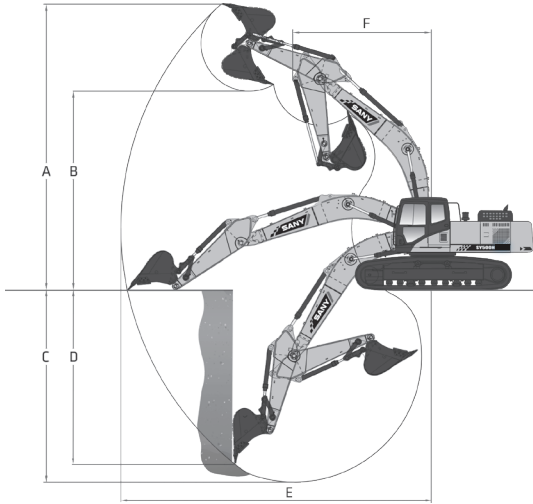
SY500H ATTACHMENTS CONTINUED	
s	Convenient grease points
o	Centralized lubrication system
s	Dirt seals on all bucket pins
s	Oil-impregnated bushings
s	Reinforced resin thrust plates
o	Quick coupler
o	Buckets: Heavy duty / Heavy-duty high capacity / Side cutter and teeth
OPERATOR'S STATION	
s	Adjustable independent-control positions (levers-to-seat, seat-to-pedals)
s	AM/FM radio with USB charging and Bluetooth® connectivity
s	Auto climate control/air conditioner/heater/pressurizer
s	Built-in Operator's Manual storage compartment and manual
s	12 and 24V outlets 60 watt 5 amp
s	Deluxe heated air suspension cloth seat with adjustable armrests
s	Heavy duty rubber floor mat
s	Front windshield wiper with intermittent speeds
s	Illuminated gauge: diesel exhaust fluid, engine coolant, and fuel levels
s	Horn, electric
s	Hour meter, electric
s	Hydraulic shutoff lever, all controls
s	Interior light
s	Large cup holder
s	Digital Power mode selection: 3 power modes- low, standard, and high
s	Digital tool selection: bucket, shear, hammer, etc.
s	10" Touch screen LCD monitor with: Diagnostic capability / Multiple-language / Maintenance tracking / Clock
s	System monitoring with alarm features: Auto-idle indicator, engine air cleaner restriction indicator light, engine check, engine coolant temperature indicator light with audible alarm, engine oil pressure indicator light with audible alarm, low-alternator-charge indicator light, low-fuel indicator light, low DEF indication with audible alarm, fault code alert indicator, fuel-rate display, wiper-mode indicator, work-lights-on indicator, and work-mode indicator
s	Motion alarm with cancel switch (conforms to SAE J994)
s	Power-boost switch on right joystick
s	Auxiliary hydraulic control switches in right console lever
s	3" Orange retractable seat belt
s	Transparent overhead hatch
s	Heated or cooled food/beverage storage
s	Hydraulic oil filter restriction indicator light
s	Protection screens for cab front, rear, and side
ELECTRICAL	
s	60-amp alternator
s	Ground level electrical disconnect (lockout tag out)
s	Blade-type multi-fused circuits
s	Positive-terminal battery covers
s	Rearview camera
LIGHTS	
s	Work lights: High power LED - 2 mounted on boom, 2 mounted on top of cab, 1 mounted under step on right side of machine

In the interest of continual equipment development, SANY America Inc. reserves the right to change these specifications at any time without prior notification.  
 ©2025 SANY America Inc. HEXPS25SY500H003



# PRODUCT SPECIFICATIONS LARGE EXCAVATOR || SY500H

## WORKING RANGE

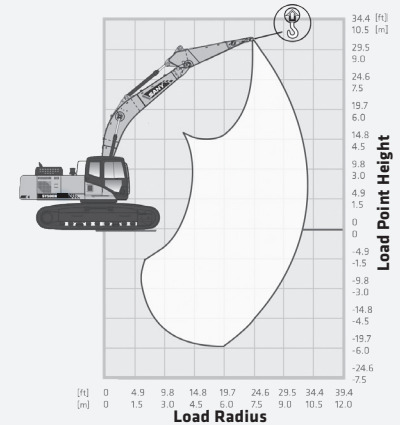
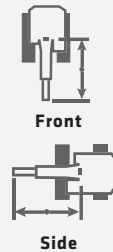


WORKING RANGE			
Boom Length	23'	7 000 mm	
Stick (Arm) Length	12' 9"	3 900 mm	
A Maximum Digging Height	36' 6"	11 112 mm	
B Maximum Dumping Height	25' 8"	7 843 mm	
C Maximum Digging Depth	27' 0"	8 225 mm	
D Maximum Vertical Wall Digging Depth	22' 0"	6 725 mm	
E Maximum Reach at Ground Level	41' 2"	12 537 mm	
F Minimum Swing Radius	17' 1"	5 216 mm	
DIGGING PERFORMANCE			
Boom Length	23'	7 000 mm	
Stick (Arm) Length	12' 9"	3 900 mm	
Bucket Breakout Force (ISO)	61,822 lbf	275.0 kN	
Stick (Arm) Digging Force (ISO)	45,535 lbf	207.0 kN	

## LIFTING PERFORMANCE

Standard 23' (7 000 mm) Boom  
 Standard 12' 9" (3 900 mm) Stick  
 Standard 35" (900 mm) Track Shoes  
 No Bucket

Ratings are based on ISO 10567:2007. Lift capacity does not exceed 75% of tipping load with the machine on firm, level ground or 87% of hydraulic lifting capacity.



LOAD RADIUS	9.8 FT 3.0 M		14.8 FT 4.5 M		19.7 FT 6.0 M		24.6 FT 7.5 M		29.5 FT 9.0 M	
LOAD POINT HEIGHT										
19.7 ft 6.0 m									21,660 lb* 9825 kg*	21,660 lb 9825 kg
14.8 ft 4.5 m					28,937 lb* 13126 kg*	28,937 lb* 13126 kg*	25,115 lb* 11392 kg*	25,115 lb* 11392 kg*	22,992 lb* 10429 kg*	22,992 lb* 10429 kg*
9.8 ft 3.0 m			47,461 lb* 21528 kg*	47,461 lb* 21528 kg*	34,396 lb* 15602 kg*	34,396 lb* 15602 kg*	28,179 lb* 12782 kg*	28,179 lb* 12782 kg*	24,729 lb* 11217 kg*	19,797 lb 8980 kg
4.9 ft 1.5 m			48,653 lb* 22069 kg*	48,653 lb* 22069 kg*	39,189 lb* 17776 kg*	39,189 lb 17776 kg	31,085 lb* 14100 kg*	24,887 lb 11,289 kg	24,640 lb* 12002 kg*	19,152 lb 8687 kg
0 ft 0 m			49,246 lb* 22338 kg*	49,246 lb* 22338 kg*	42,330 lb* 19201 kg*	33,102 lb 15015 kg	33,263 lb* 15088 kg*	24,070 lb 10918 kg	28,440 lb* 12900 kg*	18,228 lb 8268 kg
-4.9 ft -1.5 m	33,073 lb* 15002 kg*	33,073 lb* 15002 kg*	58,931 lb* 26731 kg*	58,931 lb 26731 kg	43,541 lb* 19750 kg*	31,900 lb 14470 kg	34,306 lb* 15561 kg*	23,646 lb 10724 kg	24,015 lb 10893 kg	18,435 lb 8362 kg
-9.8 ft -3.0 m	50,428 lb* 22874 kg*	50,428 lb* 22874 kg*	56,559 lb* 25655 kg*	56,559 lb* 25655 kg*	42,732 lb* 19383 kg*	32,597 lb 14786 kg	33,794 lb* 15329 kg*	23,642 lb 10724 kg	27,179 lb 12328 kg	18,576 lb 8426 kg
-14.8 ft -4.5 m	70,748 lb* 32091 kg*	70,748 lb* 32091 kg*	51,332 lb* 23284 kg*	51,332 lb* 23284 kg*	39,376 lb* 17861 kg*	33,179 lb 15050 kg	30,714 lb* 13,932 kg*	24,151 lb 10955 kg		

\* Indicates load limited by hydraulic lifting capacity.

