

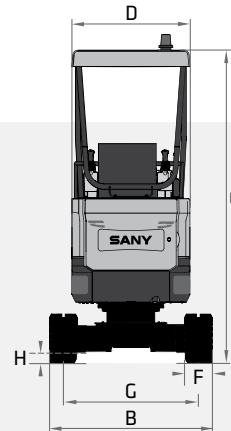
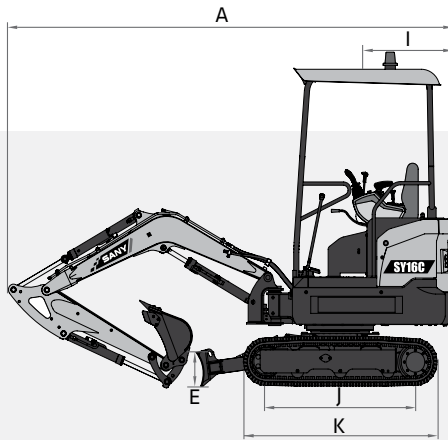
EXCAVATOR

SY16C

STANDARD FEATURES

- ➔ Swing boom functionality
- ➔ Reduced tail swing
- ➔ 1-way and 2-way primary auxiliary
- ➔ Retractable tracks
- ➔ Powerful Yanmar Engine

18.2 hp
Net Power
7' 9"
Dig Depth
4,023 lbs
Operating Weight
3,732 lbf
Bucket Breakout



TECHNICAL SPECIFICATIONS

TECHNICAL SPECIFICATIONS

Operating Weight	4,023 lbs	1 860 kPa
Ground Pressure	4.2 psi	29.1 kPa
Engine	Yanmar 3TNV80F	
Displacement	77.5 in ³	1.27 L
Gross Power	19.6 HP	14.6 kW
Net Power	18.2 HP	13.6 kW
Hydraulics	Load Sensing with Pilot Control	
Main Hydraulic Pump	Axial Piston - Variable Displacement	
Operating Flow (maximum)	19 gal/min	72.0 L/min
Operating Pressure (maximum)	3,553 psi	24.5 MPa
Auxiliary Flow (maximum)*	11 gal/min	40 L/min
Auxiliary Pressure (maximum)	3,626 psi	25 MPa
Travel Motor	Axial Piston	
Travel Pressure (maximum)	3,553 psi	24.5 MPa
Travel Speeds (maximum)	1.7 / 2.5 mph	2.7 / 4.0 km/hr
Travel Effort (maximum)	3,507 lbf	15.6 kN
Grade Capability (maximum)	30°	
Swing Motor	Axial Piston	
Swing Pressure (maximum)	2,350 psi	16.2 MPa
Swing Speed (maximum)	10 RPM	
Undercarriage (standard)	Belted Rubber Track	
Track Shoe Width (standard)	9"	230 mm
Track Rollers (per side)	3	
Carrier Rollers (per side)	-	

DIMENSIONS

DIMENSIONS

Boom Length	5' 11"	1810 mm
Stick Length	3' 8"	1130 mm
A Transport Length	12'	3 665 mm
B Transport Width	3' 3" / 4' 5"	980 / 1 350 mm
C Transport Height	8' 4"	2 540 mm
D Upper Structure Width	3' 3"	980 mm
E Blade Height	11"	270 mm
F Track Width (standard shoe)	9"	230 mm
G Track Gauge	2' 6" / 3' 8"	750 / 1 120 mm
H Ground Clearance (minimum)	7"	180 mm
I Tail Swing Radius	3' 0"	920 mm
J Track Length on Ground	4' 0"	1 225 mm
K Track Length	5' 2"	1 585 mm

SERVICE REFILL CAPACITIES

Fuel Tank Capacity	5.3 gal	20.0 L
Hydraulic Tank Capacity	5.5 gal	21.0 L
Engine Oil Capacity	0.9 gal	3.4 L
Cooling System Capacity	1.3 gal	5.0 L

*Based on theoretical calculation at max flow with no load. Subject to alterations. In the interest of continual equipment development.

SANY America Inc. reserves the right to change these specifications at any time without prior notification. ©2023 SANY America Inc. HEXPS23SY16C001



STANDARD AND OPTIONAL EQUIPMENT

s = standard / o = optional

SY16C	ENGINE
s	Yanmar 3TNV74F
s	Tier 4F / EU Stage V Ready
s	Auto - idle
s	Dual-element dry air filter
s	Engine air precleaner
s	Coolant Expansion tank
s	EGR Valve
s	Fan guard
s	Engine coolant to -37 deg. C (-34 deg. F)
s	Full-flow oil filter
s	High flow cooling fan
s	500-hour engine-oil-change interval
s	Fuel filter and water separator
HYDRAULIC SYSTEM	
s	Spring-applied, hydraulically released automatic swing brake
s	Load sensing hydraulic system
s	Control pattern change valve
s	Primary auxiliary hydraulic circuit with 1 and 2-way combination piping
s	Adjustable auxiliary pressure relief
UNDERCARRIAGE	
s	Expandable and retractable tracks
s	Planetary drive with axial piston motors
s	Propel motor shields
s	Spring-applied, hydraulically released automatic propel brake
s	Track guides, front idler and 2 per side
s	2-speed travel selection through display and on dozer lever
s	4 lower track rollers each side
s	1 upper carrier roller each side
s	Dozer blade and cylinder guarding
s	Flip out dozer blade extensions
s	Tie downs on track frame and dozer blade
s	230mm (9") wide rubber tracks
s	Undercarriage frame opening guard
UPPERSTRUCTURE	
s	Right-hand, left-hand, and counterweight mirrors
s	Lockable cab, hood, and service doors

In the interest of continual equipment development, SANY America Inc. reserves the right to change these specifications at any time without prior notification.
 ©2023 SANY America Inc. HEXPS23SY16C001



*Warranty applies to 2023 Excavator and Wheel Loader models only.



STANDARD AND OPTIONAL EQUIPMENT

s = standard / o = optional

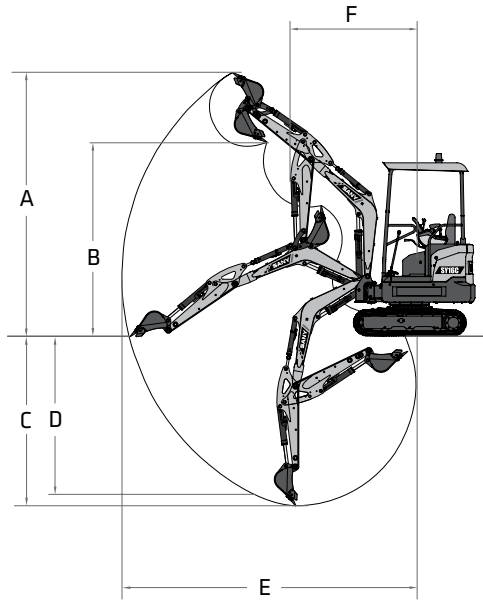
SY16C	UPPERSTRUCTURE (Continued)
s	Remote-mounted engine oil and fuel filters
s	Daily fluid level inspection visible from ground
s	Rear reflectors
ATTACHMENTS	
s	Convenient grease points
s	Dirt seals on all bucket pins
s	Thumb bracket
s	Oil-impregnated bushings
s	Reinforced thrust plates
s	Quick coupler plumbing to end of the stick
OPERATOR'S STATION	
s	Hydraulic pilot controls for boom, stick, swing, and travel operations
s	Proportional auxiliary switches on joystick
s	Travel levers with foot pedals
s	Weight adjustable suspension vinyl seat with fore/aft adjustment
s	2" retractable seat belt
s	Emergency stop switch
s	Monitor with engine coolant gauge, high temp warning, low oil pressure indicator, glow plug indicator, battery indicator, engine hour meter, fuel level
s	Operation and maintenance manual storage
s	Heavy duty removeable rubber floor mat
s	Cup holder
s	Storage bin
s	Horn, electric
s	Hour meter, electric
s	Hydraulic shutoff lever, all controls
s	Travel alarm with cancel switch
ELECTRICAL	
s	12V electrical system
s	Maintenance free battery
s	Ground level battery disconnect
s	Easy access fuse panel
s	Terminal battery covers
s	40-amp alternator
s	12V power outlet
LIGHTS	
s	Work lights: 2 mounted on top of cab, 1 mounted on boom, magnetic beacon

In the interest of continual equipment development, SANY America Inc. reserves the right to change these specifications at any time without prior notification.
 ©2023 SANY America Inc. HEXPS23SY16C001



PRODUCT SPECIFICATIONS EXCAVATOR ||| SY16C

WORKING RANGE



WORKING RANGE

Boom Length	5' 11"	1 810 mm
Stick Length	3' 8"	1 130 mm
A Maximum Digging Height	12' 0"	3 665 mm
B Maximum Dumping Height	8' 8"	2 635 mm
C Maximum Digging Depth	7' 9"	2 360 mm
D Maximum Vertical Wall Digging Depth	7' 3"	2 215 mm
E Maximum Reach at Ground Level	13' 1"	4 000 mm
F Minimum Swing Radius	5' 5"	1 665 mm

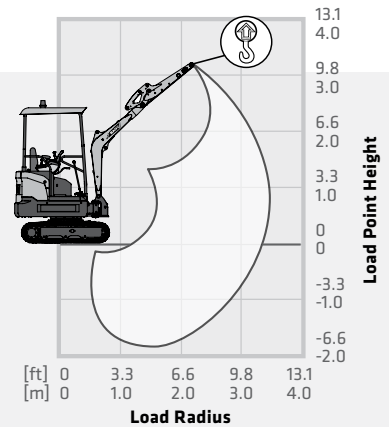
DIGGING PERFORMANCE

Boom Length	5' 11"	1 810 mm
Stick Length	3' 8"	1 130 mm
Bucket Breakout Force (ISO)	3,732 lbf	16.6 kN
Stick Digging Force (ISO)	2,248 lbf	10.0 kN

LIFTING PERFORMANCE

- Standard 5'11" (1 810 mm) Boom
- Standard 3'8" (1 130 mm) Stick
- Standard 9" (230 mm) Track Shoes
- Maximum 3'8" (1 120 mm) Track Gauge
- No Bucket

Ratings are based on ISO 10567:2007. Lift capacity does not exceed 75% of tipping load with the machine on firm, level ground or 87% of hydraulic lifting capacity.



	LOAD RADIUS	4.9 ft 1.5 m		6.6 ft 2.0 m		8.2 ft 2.5 m		9.8 ft 3.0 m		MAX REACH	
		BLADE UP	BLADE DOWN	BLADE UP	BLADE DOWN	BLADE UP	BLADE DOWN	BLADE UP	BLADE DOWN	BLADE UP	BLADE DOWN
9.8 ft 3.0 m										627 lb* 285 kg*	627 lb* 285 kg*
6.6 ft 2.0 m						587 lb* 267 kg*	557 lb 253 kg	596 lb* 271 kg*	596 lb* 271 kg*	612 lb* 278 kg*	612 lb* 278 kg*
3.3 ft 1.0 m				1,063 lb* 483 kg*	1,063 lb* 483 kg*	816 lb* 371 kg*	814 lb 370 kg	695 lb* 316 kg*	673 lb 306 kg	634 lb* 288 kg*	537 lb 244 kg
0 ft 0 m	1,817 lb* 826 kg*	1,817 lb* 826 kg*	1,388 lb* 631 kg*	1,162 lb 528 kg	1,003 lb* 456 kg*	843 lb 383 kg	785 lb* 357 kg*	649 lb 295 kg		669 lb* 304 kg*	554 lb 252 kg
-3.3 ft -1.0 m	1,802 lb* 819 kg*	1,802 lb* 819 kg*	1,239 lb* 563 kg*	1,164 lb 529 kg	895 lb* 407 kg*	840 lb 382 kg				700 lb* 318 kg*	700 lb* 318 kg*
9.8 ft 3.0 m										627 lb* 285 kg*	627 lb* 285 kg*
6.6 ft 2.0 m						557 lb 253 kg	557 lb 253 kg	596 lb* 271 kg*	596 lb* 271 kg*	594 lb 270 kg	612 lb* 278 kg*
3.3 ft 1.0 m				1,063 lb* 483 kg*	1,063 lb* 483 kg*	814 lb 370 kg	814 lb 370 kg	651 lb 296 kg	673 lb 306 kg	517 lb 235 kg	537 lb 244 kg
0 ft 0 m	1,784 lb 811 kg	1,817 lb* 826 kg*	1,131 lb 514 kg	1,162 lb 528 kg	816 lb 371 kg	843 lb 383 kg	627 lb 285 kg	649 lb 295 kg		535 lb 243 kg	554 lb 252 kg
-3.3 ft -1.0 m	1,802 lb* 819 kg*	1,802 lb* 819 kg*	1,131 lb 514 kg	1,164 lb 529 kg	814 lb 370 kg	840 lb 382 kg				700 lb* 318 kg*	700 lb* 318 kg*

* Indicates load limited by hydraulic lifting capacity.